

Just three years ago,  
Compaq fired  
the shot heard  
around the world.



30 60 90 120 150 180 210 240 270 300 330 360

# Now for the

In September 1986, Compaq introduced a personal computer that changed people's ideas about what a PC could do.

The COMPAQ DESKPRO 386 Personal Computer was the first PC based on the powerful 386 microprocessor. It gave people the speed and power to do more than ever before. It pushed out the envelope of technology. But did it in a way that let users continue to work with industry-standard software and hardware. With it, Compaq set a new standard in PC performance.

Compaq has done it again.

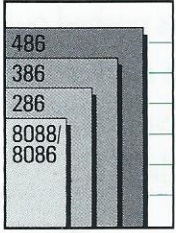
Introducing the COMPAQ DESKPRO 486/25 Personal Computer and COMPAQ SYSTEMPRO Personal Computer System.

Once again, Compaq has expanded the role of the PC—to meet the most demanding needs of both single and multiple users. And once again, Compaq has pushed out the envelope of technology to deliver new levels of performance and expandability, without sacrificing compatibility.



# Compaq intro

As PC technology has evolved, Compaq has been consistently among the first to tap its power. Now with the COMPAQ



DESKPRO 486/25 and the COMPAQ SYSTEMPRO, Compaq brings new levels of performance to single and multiple users.

---

## THE COMPAQ DESKPRO 486/25: THUNDEROUS PERFORMANCE.

---

For individual power users, nothing compares to the new COMPAQ DESKPRO 486/25 Personal Computer. It will let you work faster than ever before.

Every component has been designed to unleash the power of the new Intel 25-MHz 486 microprocessor. Power that drives numeric-intensive applications up to three times faster than 25-MHz 386-based PCs, outpacing many technical workstations.

It's power you can put to work on the most demanding applications. To handle CAD/CAM/CAE, statistical analysis, portfolio modeling, project management and multitasking.

The Intel 25-MHz 486 microprocessor is the heart of the system. Its breakthrough design integrates the processor with a numeric

coprocessor (to speed number crunching) and an 8-Kbyte cache (to reduce wait states).

To boost performance further, Compaq added a second-level cache memory controller with 128 Kbytes of high-speed static RAM. Combined with interleaved memory architecture, it lets your data fly between the microprocessor and memory.

The 486 works in concert with COMPAQ Flex Architecture, which integrates a processor/memory bus with the new EISA I/O bus. This enables information to be processed at the highest possible speed

while maintaining compatibility with 8-, 16- and powerful new 32-bit expansion boards.

The COMPAQ DESKPRO 486/25 is open for customization.

Four megabytes of memory are standard, so you can run applications under MS OS/2 Version 1.2, MS-DOS or UNIX operating systems.

If you need more, you can

expand memory up to 100 megabytes using a separate high-speed 32-bit memory slot. That leaves up to seven EISA slots free for your choice of expansion boards.

You can work with up to seven internal storage devices, choosing from a range of high-performance, high-capacity fixed disk



*The COMPAQ DESKPRO 486/25 was designed from the ground up to unleash the power of the 25-MHz 486 microprocessor.*

# duces performance For one.



drives (the 650- and 320-MB models have fast 1:1 interleave and ESDI controllers).

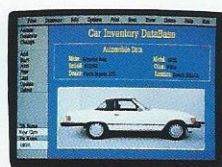
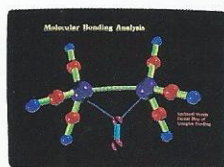
All told, you can store up to 1.3 gigabytes of data internally, or up to 2.6 gigabytes using the optional COMPAQ Fixed Disk Expansion Unit.

Compaq didn't stop there. Accelerated

VGA graphics are built in, giving you a crisp, colorful display and freeing an expansion slot.

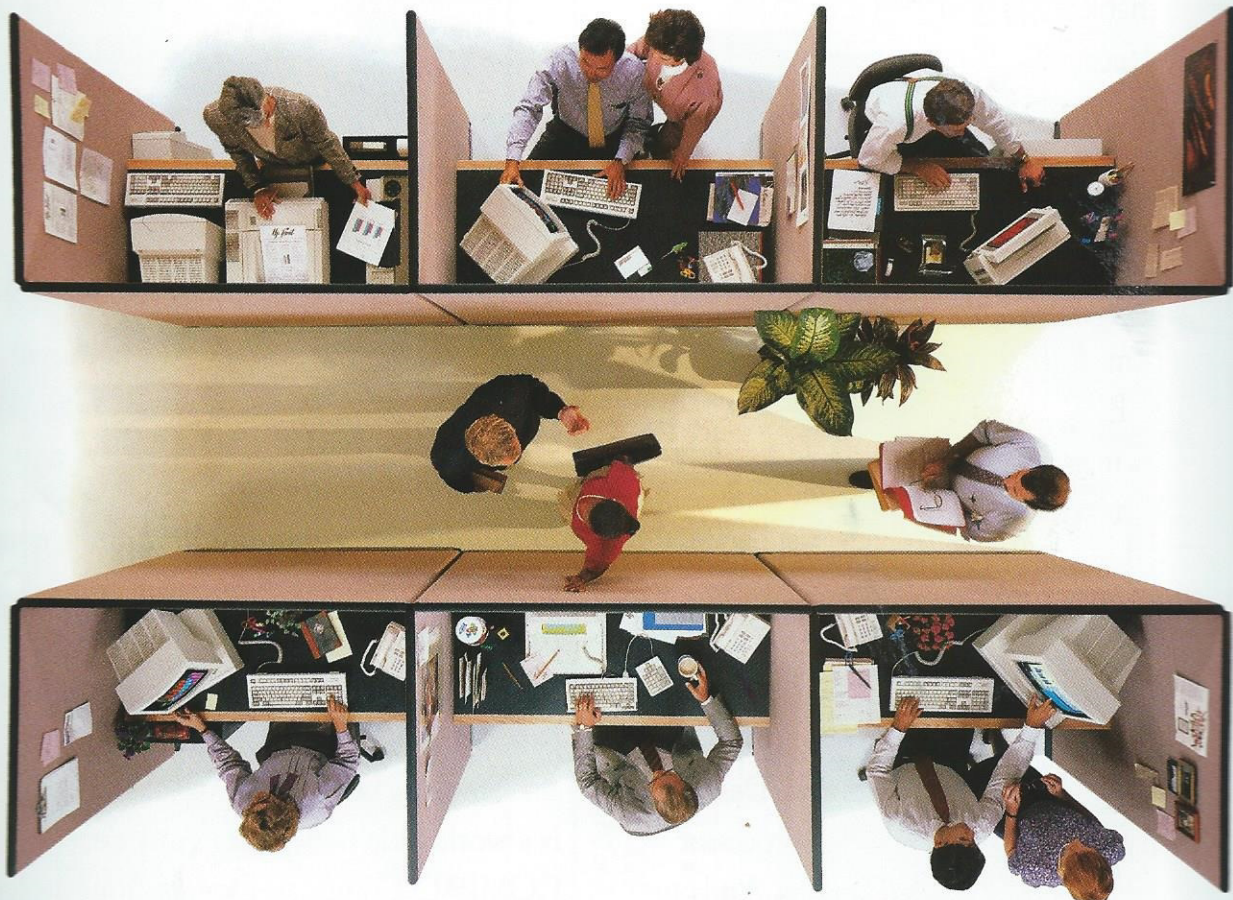
The system even has a socket for an optional Weitek 4167 coprocessor to blaze through calculations.

The COMPAQ DESKPRO 486/25. It's sure to bring a little thunder to your office.



*You can run the most complex CAD/CAM/CAE, scientific and business applications faster than ever before.*

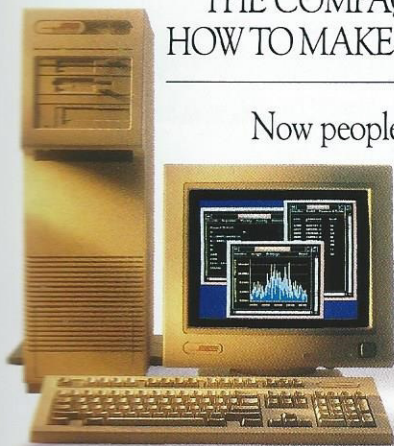
# that will have busi And all.



## THE COMPAQ SYSTEMPRO: HOW TO MAKE A CROWD ROAR.

Now people who work together  
can work faster  
than ever before.

*The new COMPAQ  
SYSTEMPRO: an unprec-  
edented combination of  
performance and expand-  
ability for multiple users.*



Every aspect of the new COMPAQ  
SYSTEMPRO has been engineered to bring  
unprecedented total system performance  
and expandability to demanding con-  
nected environments.

It's an ideal server to handle advanced local  
area networking. To take advantage of new client-  
server applications like shared databases. And to  
manage multiuser transaction processing.

**EIS**

# Business booming.

Inside, you'll find a series of technological breakthroughs.

The first is a flexible system processor design that lets you work with both 33-MHz 386 and future 33-MHz 486 technology.

Initial models offer a 386/33 system processor that employs a 386 microprocessor optimized with a 64-Kbyte cache memory design and a socket for optional coprocessors. This drives software more than twice as fast as the IBM PS/2 Model 80, and surpasses most minicomputers.

Computing potential can be increased up to four times by adding a second system processor. You can use two 386 processors now. Or work with a 386 and a 486, or two 486 processors in the future. So your investment is protected.

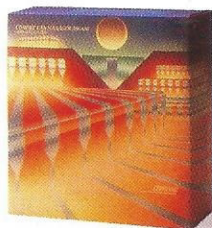
The multiple system processors are integrated into COMPAQ Flex/MP Architecture, which combines a separate processor/memory bus with the EISA I/O bus.

EISA delivers the fastest I/O performance, which is critical for data sharing.

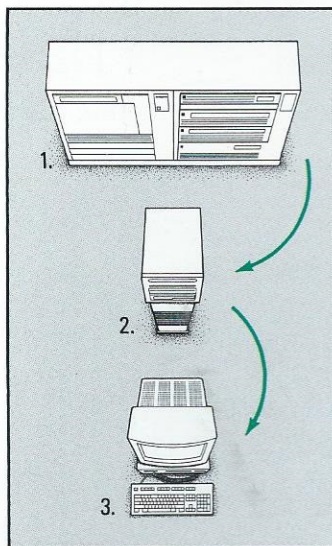
You can add up to six 32-bit network interface controllers for maximum server throughput. And you're ensured compatibility with 8-, 16- and 32-bit boards.

Users gain nearly instant access to fixed

disk data with innovative drive array technology that transfers data up to four times faster than nonarrayed drives. It also supports the most comprehensive range of data protection features.



*The COMPAQ LAN MANAGER 386/486 optimizes the COMPAQ SYSTEMPRO for use in OS/2-based networks.*



*The COMPAQ SYSTEMPRO is a powerful network server and mainframe gateway, giving users the fastest access to departmental and mainframe data.*

As you add more users and more complex applications, the COMPAQ SYSTEMPRO grows right along with you. It's the first PC to actually increase in performance when you add options like system processors or drive arrays.

It grows in other ways that are simply amazing. You can expand the 4 megabytes of standard RAM to 256 megabytes, use up to 11 expansion boards, work with 11 storage options

and store up to 4.28 gigabytes of data.

You're also free to work in your choice of network and multiuser operating system. This includes Novell NetWare 386, SCO UNIX System V/386, new COMPAQ LAN MANAGER 386/486 and others.

The COMPAQ SYSTEMPRO. Get your group together, and watch them roar.

**COMPAQ**

It simply works better.

# sonic boom.

These new computers were designed from a simple observation: People use computers differently. One user using a PC has different needs than a group working together on a network or multiuser system.

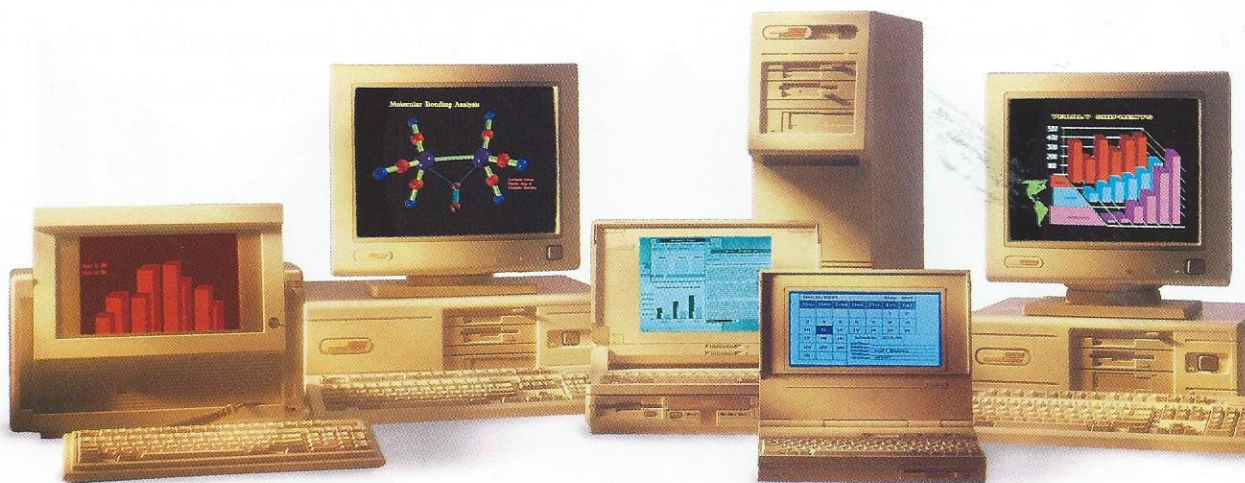
The COMPAQ DESKPRO 486/25 is for the individual whose job depends on a PC. It was designed from the ground up to unleash the power of the evolutionary new Intel 25-MHz 486 microprocessor.

The COMPAQ SYSTEMPRO delivers an unprecedented combination of system performance and expandability to networks and multiuser systems. Its breakthrough design gives users the flexibility to work with both 33-MHz 386 and future 33-MHz 486 technology. It also provides the unmatched capability to work with multiple processors.

Inside both you'll find advances like cache memory designs that boost processor performance. Extended Industry Standard Architecture (*Extended ISA or EISA*) that accelerates input/output performance while maintaining compatibility. New drive and controller technology that increases fixed disk performance and reliability. And that's just the beginning of this story.



# When it comes to performance we believe actions speak louder than words.



Since we introduced our first personal computer in 1983, no other computer company has delivered PCs with the technical excellence of COMPAQ PCs.

Today Compaq offers a full line of high-performance personal computers. Desktops based on 286, 386 and now 486 processor technology. Portables and laptops. And our new PC system, customized for multiple users.

In every COMPAQ personal computer you'll find innovative technology. Along with plenty of common sense. Like the ability to run the world's largest library of industry-standard software. And the room to add the peripherals your job demands.

This combination of technical leadership and practical thinking is why COMPAQ PCs consistently earn the highest marks for quality from computer experts. And unsurpassed marks for satisfaction from users.

Standing behind every COMPAQ PC is a worldwide network of Authorized COMPAQ Computer Dealers. Your dealer is trained to help you build powerful computing solutions. For the location of your nearest dealer and free information, call 1-800-231-0900, Operator 107. In Canada, 1-800-263-5868, Operator 107.

**COMPAQ**

It simply works better.