

LAL		Revisions			210	B
Rev.	Description	Chk.	Date	Approved		
A	ENGRG RELEASE	<i>J.W.</i>	3/17/76	<i>J.W.</i>		
B	M/L ITEM 2 PART NO. WAS 3417	<i>M</i>	5/18/76	<i>J.W.</i>		

**ENGINEERING
RELEASE**

Dist. Code **ALT**

These drawings and specifications, and the data contained therein, are the exclusive property of Xerox Corporation and/or Rank Xerox, Ltd. issued in strict confidence and shall not, without the prior written permission of Xerox Corporation or Rank Xerox, Ltd., be reproduced, copied or used for any purpose whatsoever, except the manufacture of articles for Xerox Corporation or Rank Xerox, Ltd.

Notes Unless Specified	Drawn	<i>M. L. ...</i>	3-16-76
	Check	<i>J.W.</i>	3/17/76
	Appr.	<i>J.W.</i>	3/17/76
	Material		

Xerox Corporation
El Segundo, California

XEROX

ALTO II

ASSEMBLY, CABLE - DISK
(INTERNAL)

Model No.	ALTO II
First Use	EWO 7YF 92
Next Assy.	216299
First Use	

Finish	
--------	--

Code Ident.	18338
Scale	NONE

Size	A
Dwg. No.	216400
Do Not Scale Drawing	

Change Letter	B
Sheet	1 OF 4

NOTES: UNLESS OTHERWISE SPECIFIED

1. IDENTIFY PER XEROX SPEC 100198, (TAG).

2. MAY BE PURCHASED FROM 3M COMPANY, SAINT PAUL, MINN, VENDOR PART NUMBER.

These drawings and specifications, and the data contained therein, are the exclusive property of Xerox Corporation and/or Rank Xerox, Ltd. issued in strict confidence and shall not, without the prior written permission of Xerox Corporation or Rank Xerox, Ltd., be reproduced, copied or used for any purpose whatsoever, except the manufacture of articles for Xerox Corporation or Rank Xerox, Ltd.

Title

ALTO II

ASSEMBLY, CABLE - DISK

(INTERNAL)

Xerox Corporation
El Segundo, California

XEROX

216400

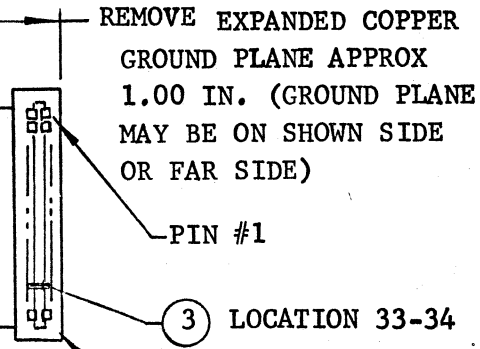
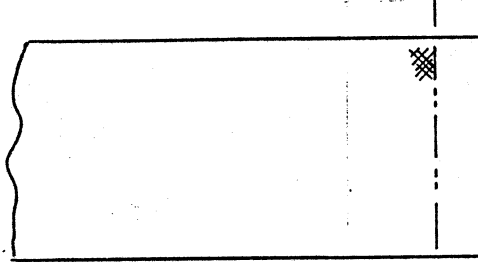
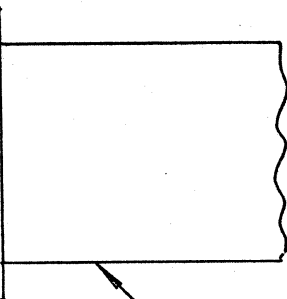
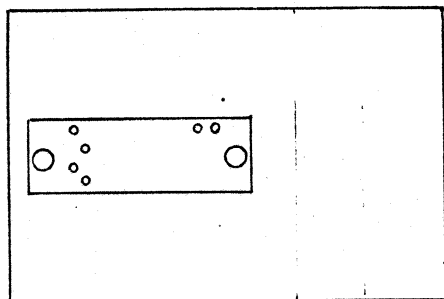
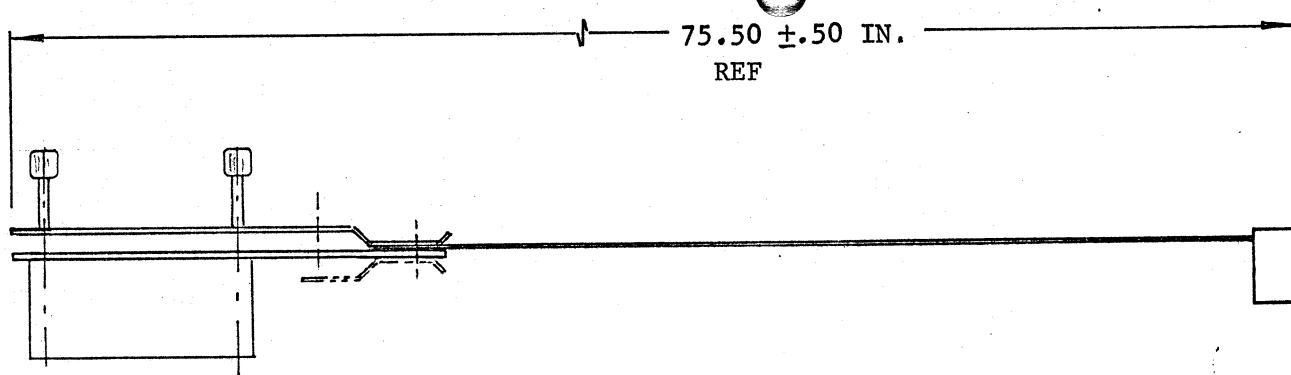
B

Sheet

2

Of

4



1

2

These drawings and specifications, and the data contained therein, are the exclusive property of Xerox Corporation and/or Rank Xerox, Ltd. issued in strict confidence and shall not, without the prior written permission of Xerox Corporation or Rank Xerox, Ltd., be reproduced, copied or used for any purpose whatsoever, except the manufacture of articles for Xerox Corporation or Rank Xerox, Ltd.

Title

ALTO II
ASSEMBLY, CABLE - DISK
(INTERNAL)

Xerox Corporation
El Segundo, California

XEROX

216400

B

Sheet

3 Of 4

