

FCN-724P/724Q/725P/728P/728Q***-G/*M, - 723J/727B/727J***/*M

FCN-720M SERIES 2mm PITCH CONNECTORS

BLOCK PLUG: FCN-724P/725P/728P*-G/*M**
CRIMP/DIP SOCKET: FCN-723J*/*M**

FEATURES

- Contact pitch of 2mm (0.079 in.)
- This crimp type connector is designed for wide use.
- 1 row/2 row types allow various types of mounting.
- DIP sockets allow board-to-board connections (18 pos only).
- Insulator material is UL (94V-0/94V-1) approved.
- Plural mounting of crimp socket on one plug possible by stacking sockets.

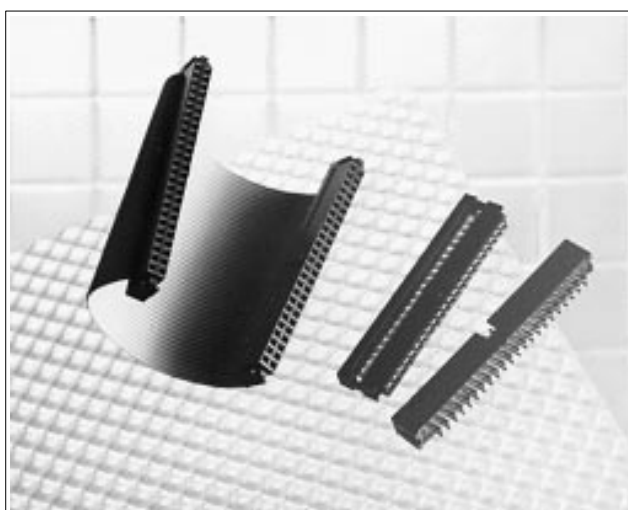
SPECIFICATIONS

Temperature range	-55°C to -85°C
Maximum allowable current	3A DC
Maximum allowable voltage	250V AC
Contact resistance	20 mΩ max. (6V DC, 0.3A)
Insulation resistance	1,000 MΩ or min. (500V)
Dielectric strength	500V AC for 1 minute
Applicable wire	AWG #26 to #34

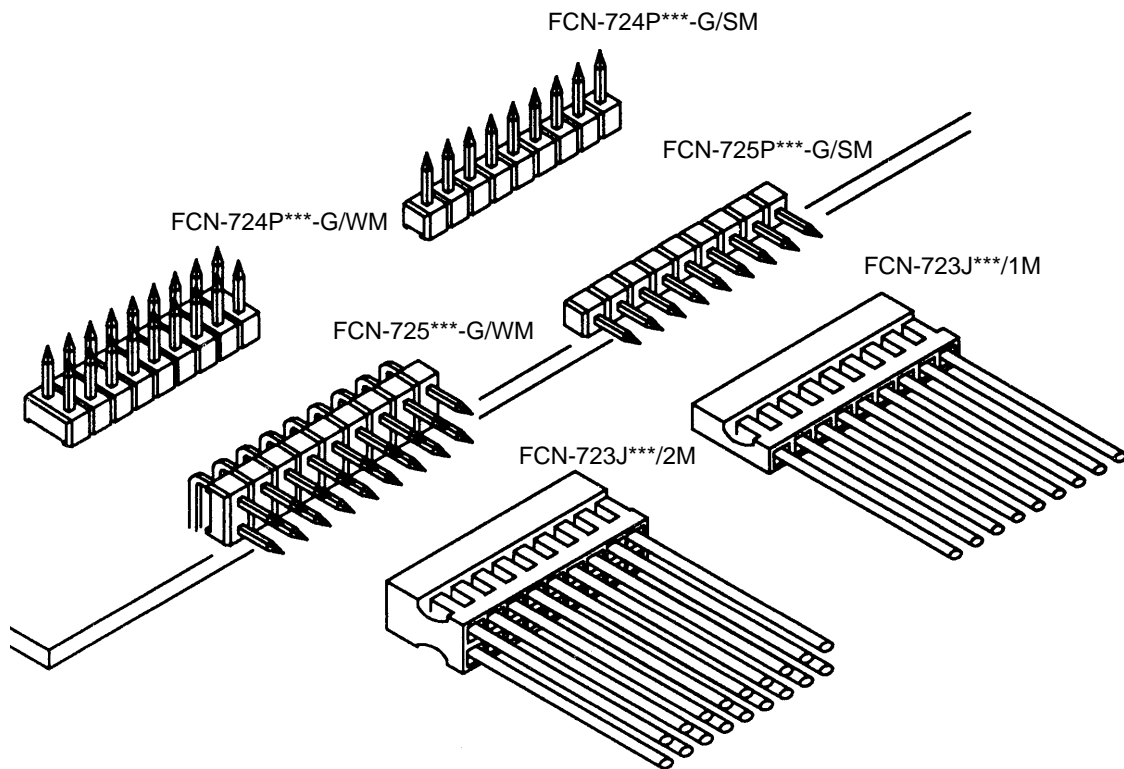
MATERIAL

Insulator	Plug: Polyester (U94V-0), PPS resin for SMT type Housing: PPO resin
Conductor	Copper alloy
Plating	Contact: Gold Terminal: Palladium

4

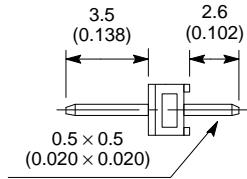
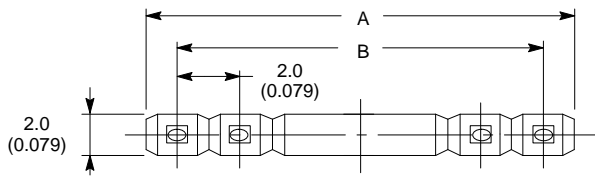


APPLICATION EXAMPLE

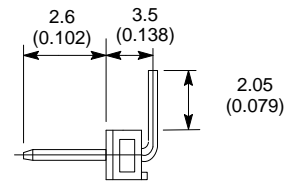


FCN-724P/725P***-G/*M, BLOCK PLUG

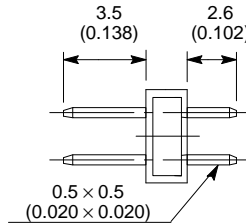
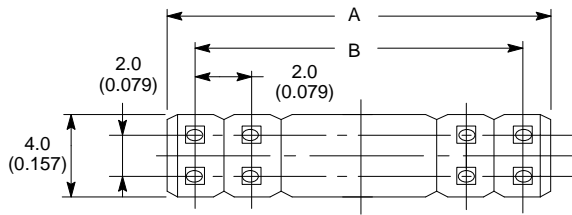
DIMENSIONS



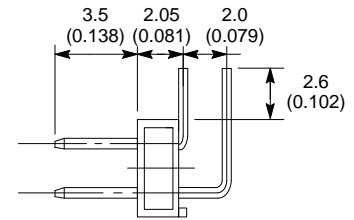
One-row (FCN-724P□□-G/SM)



One-row (FCN-725P□□-G/SM)



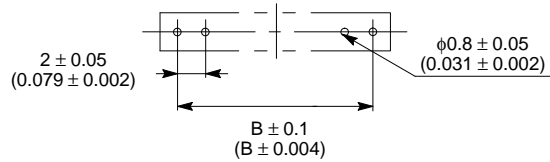
Two-row (FCN-724P□□-G/WM)



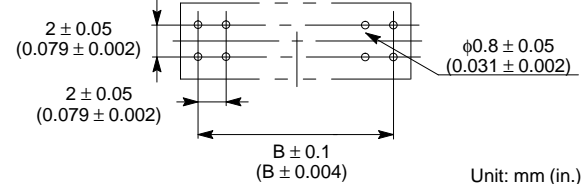
Two-row (FCN-725P□□-G/WM)

MOUNTING HOLE LAYOUT

Over-row



Two-row



Unit: mm (in.)

PART NUMBER

One-row connectors

Pos	Part Number	A	B	C
2	FCN-72□P002-G/SM	4.0 (0.157)	2.0 (0.079)	—
3	FCN-72□P003-G/SM	6.0 (0.236)	4.0 (0.157)	2.0 (0.079)
4	FCN-72□P004-G/SM	8.0 (0.315)	6.0 (0.236)	4.0 (0.157)
6	FCN-72□P006-G/SM	12.0 (0.472)	10.0 (0.394)	8.0 (0.315)
7	FCN-72□P007-G/SM	14.0 (0.551)	12.0 (0.472)	10.0 (0.394)
8	FCN-72□P008-G/SM	16.0 (0.630)	14.0 (0.551)	12.0 (0.472)
9	FCN-72□P009-G/SM	18.0 (0.709)	16.0 (0.630)	14.0 (0.551)
10	FCN-72□P010-G/SM	20.0 (0.787)	18.0 (0.709)	16.0 (0.630)
11	FCN-72□P011-G/SM	22.0 (0.866)	20.0 (0.787)	18.0 (0.709)
12	FCN-72□P012-G/SM	24.0 (0.945)	22.0 (0.866)	20.0 (0.787)
13	FCN-72□P013-G/SM	26.0 (1.024)	24.0 (0.945)	22.0 (0.866)
14	FCN-72□P014-G/SM	28.0 (1.102)	26.0 (1.024)	24.0 (0.945)
15	FCN-72□P015-G/SM	30.0 (1.181)	28.0 (1.102)	26.0 (1.024)
16	FCN-72□P016-G/SM	32.0 (1.260)	30.0 (1.181)	28.0 (1.102)
17	FCN-72□P017-G/SM	34.0 (1.339)	32.0 (1.260)	30.0 (1.181)
18	FCN-72□P018-G/SM	36.0 (1.417)	34.0 (1.339)	32.0 (1.260)

□ = 4: Straight
□ = 5: Right angle

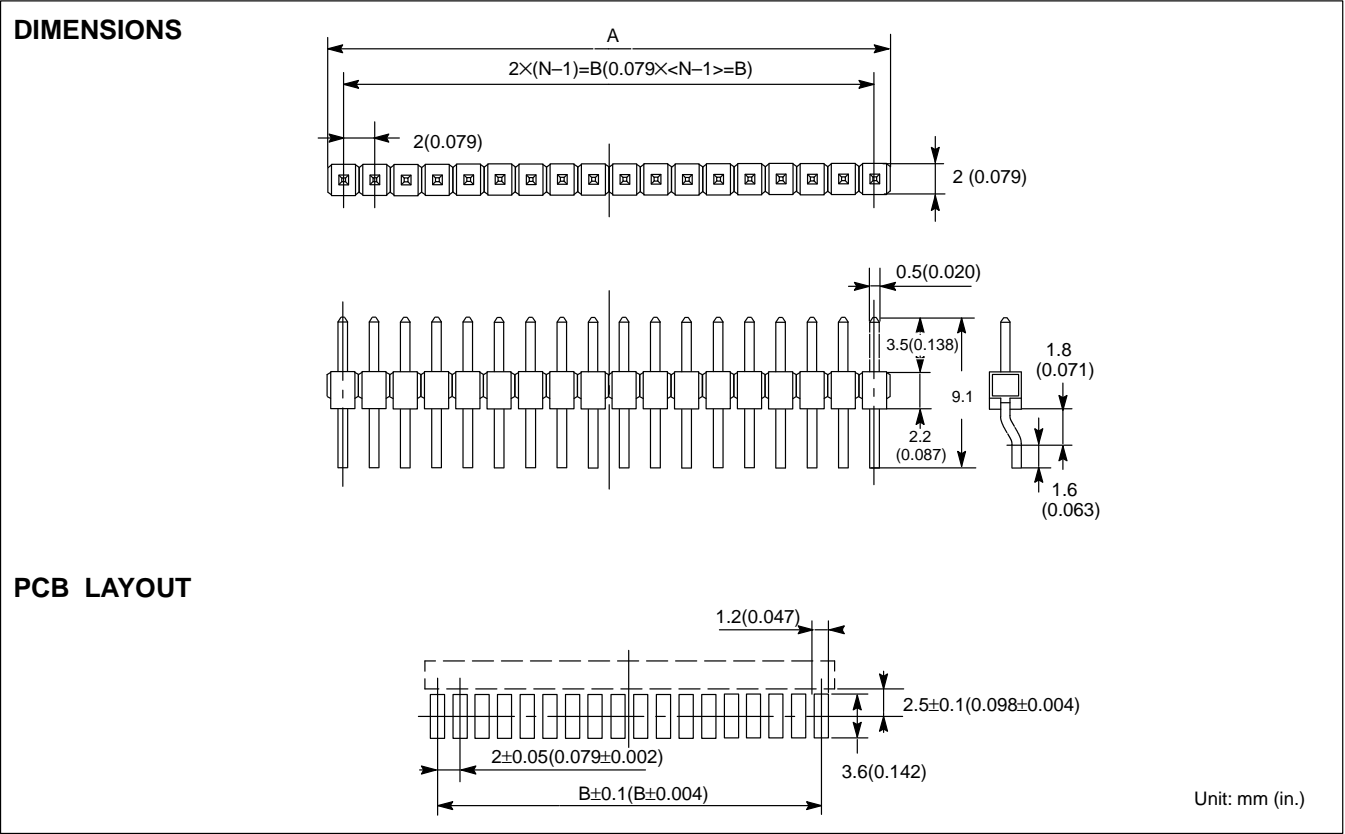
Sn plating is available One-row FCN-72□POXX-T/SM
Two-row FCN-72□POXX-T/WM

Two-row connectors

Pos	Part Number	A	B	C
4	FCN-72□P004-G/WM	4.0 (0.157)	2.0 (0.079)	—
6	FCN-72□P006-G/WM	6.0 (0.236)	4.0 (0.157)	2.0 (0.079)
8	FCN-72□P008-G/WM	8.0 (0.315)	6.0 (0.236)	4.0 (0.157)
10	FCN-72□P010-G/WM	12.0 (0.472)	10.0 (0.394)	8.0 (0.315)
12	FCN-72□P012-G/WM	14.0 (0.551)	12.0 (0.472)	10.0 (0.394)
14	FCN-72□P014-G/WM	16.0 (0.630)	14.0 (0.551)	12.0 (0.472)
16	FCN-72□P016-G/WM	18.0 (0.709)	16.0 (0.630)	14.0 (0.551)
18	FCN-72□P018-G/WM	20.0 (0.787)	18.0 (0.709)	16.0 (0.630)
20	FCN-72□P020-G/WM	22.0 (0.866)	20.0 (0.787)	18.0 (0.709)
22	FCN-72□P022-G/WM	24.0 (0.945)	22.0 (0.866)	20.0 (0.787)
24	FCN-72□P024-G/WM	26.0 (1.024)	24.0 (0.945)	22.0 (0.866)
26	FCN-72□P026-G/WM	28.0 (1.102)	26.0 (1.024)	24.0 (0.945)
30	FCN-72□P030-G/WM	30.0 (1.181)	28.0 (1.102)	26.0 (1.024)
32	FCN-72□P032-G/WM	32.0 (1.260)	30.0 (1.181)	28.0 (1.102)
34	FCN-72□P034-G/WM	34.0 (1.339)	32.0 (1.260)	30.0 (1.181)
36	FCN-72□P036-G/WM	36.0 (1.417)	34.0 (1.339)	32.0 (1.260)

□ = 4: Straight
□ = 5: Right angle

FCN-728P***-G/RM, SMT BLOCK PLUG



4

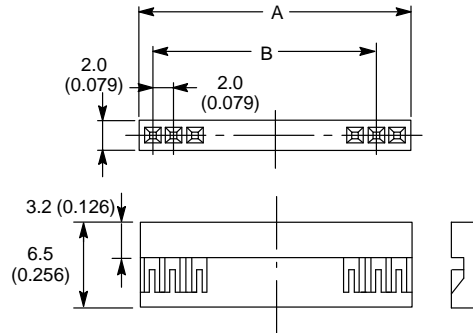
PART NUMBER

Pos	Part Number	Dimension	
		A	B
2	FCN-728P002-G/RM	4.0(0.157)	2.0(0.062)
3	FCN-728P003-G/RM	6.0(0.236)	4.0(0.157)
4	FCN-728P004-G/RM	8.0(0.315)	6.0(0.236)
5	FCN-728P005-G/RM	10.0(0.394)	8.0(0.315)
6	FCN-728P006-G/RM	12.0(0.472)	10.0(0.394)
7	FCN-728P007-G/RM	14.0(0.551)	12.0(0.472)
8	FCN-728P008-G/RM	16.0(0.630)	14.0(0.551)
9	FCN-728P009-G/RM	18.0(0.709)	16.0(0.630)
10	FCN-728P010-G/RM	20.0(0.787)	18.0(0.709)
11	FCN-728P011-G/RM	22.0(0.866)	20.0(0.787)
12	FCN-728P012-G/RM	24.0(0.945)	22.0(0.866)
13	FCN-728P013-G/RM	26.0(1.024)	24.0(0.945)
14	FCN-728P014-G/RM	28.0(1.102)	26.0(1.024)
15	FCN-728P015-G/RM	30.0(1.181)	28.0(1.102)
16	FCN-728P016-G/RM	32.0(1.260)	30.0(1.181)
17	FCN-728P017-G/RM	34.0(1.339)	32.0(1.260)
18	FCN-728P018-G/RM	36.0(1.417)	34.0(1.339)
19	FCN-728P019-G/RM	38.0(1.496)	36.0(1.417)
20	FCN-728P020-G/RM	40.0(1.575)	38.0(1.496)

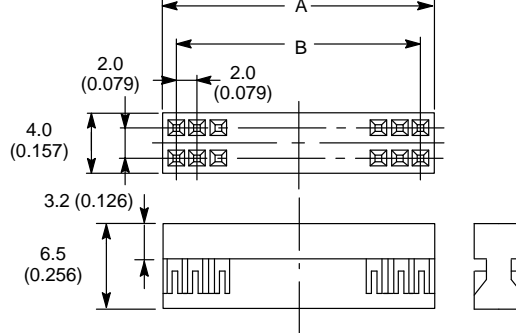
FCN-723J***/*M, CRIMP SOCKET

Unit: mm (in.)

One-row (FCN-723J0□□/1M)



Two-row (FCN-723J0□□/2M)



One-row connectors

Number of Contacts	Part Number	A	B
2	FCN-723J002/1M	4.0 (0.157)	2.0 (0.079)
3	FCN-723J003/1M	6.0 (0.236)	4.0 (0.157)
4	FCN-723J004/1M	8.0 (0.315)	6.0 (0.236)
5	FCN-723J005/1M	10.0 (0.394)	8.0 (0.315)
6	FCN-723J006/1M	12.0 (0.472)	10.0 (0.394)
7	FCN-723J007/1M	14.0 (0.551)	12.0 (0.472)
8	FCN-723J008/1M	16.0 (0.630)	14.0 (0.551)
9	FCN-723J009/1M	18.0 (0.709)	16.0 (0.630)
10	FCN-723J010/1M	20.0 (0.787)	18.0 (0.709)
11	FCN-723J011/1M	22.0 (0.866)	20.0 (0.787)
12	FCN-723J012/1M	24.0 (0.945)	22.0 (0.866)
13	FCN-723J013/1M	26.0 (1.024)	24.0 (0.945)
14	FCN-723J014/1M	28.0 (1.102)	26.0 (1.024)
15	FCN-723J015/1M	30.0 (1.181)	28.0 (1.102)
16	FCN-723J016/1M	32.01 (1.260)	30.0 (1.181)
17	FCN-723J017/1M	34.0 (1.339)	32.0 (1.260)
18	FCN-723J018/1M	36.0 (1.417)	34.0 (1.339)

Two-row connectors

Number of Contacts	Part Number	A	B
4	FCN-723J004/2M	4.0 (0.157)	2.0 (0.079)
6	FCN-723J006/2M	6.0 (0.236)	4.0 (0.157)
8	FCN-723J008/2M	8.0 (0.315)	6.0 (0.236)
10	FCN-723J010/2M	10.0 (0.394)	8.0 (0.315)
12	FCN-723J012/2M	12.0 (0.472)	10.0 (0.394)
14	FCN-723J014/2M	14.0 (0.551)	12.0 (0.472)
16	FCN-723J016/2M	16.0 (0.630)	14.0 (0.551)
18	FCN-723J018/2M	18.0 (0.709)	16.0 (0.630)
20	FCN-723J020/2M	20.0 (0.787)	18.0 (0.709)
22	FCN-723J022/2M	22.0 (0.866)	20.0 (0.787)
24	FCN-723J024/2M	24.0 (0.945)	22.0 (0.866)
26	FCN-723J026/2M	26.0 (1.024)	24.0 (0.945)
28	FCN-723J028/2M	28.0 (1.102)	26.0 (1.024)
30	FCN-723J030/2M	30.0 (1.181)	28.0 (1.102)
32	FCN-723J032/2M	32.01 (1.260)	30.0 (1.181)
34	FCN-723J034/2M	34.0 (1.339)	32.0 (1.260)
36	FCN-723J036/2M	36.0 (1.417)	34.0 (1.339)

HAND CRIMPING TOOL

Wire AWG	Wire cross-section (mm ²)	Crimp height (mm<in.>)	Wire Diameter (mm<in.>)	Hand Crimping tool	Contact	Stripped length (mm<in.>)
#26	0.1 to 0.16	0.64 to 70.0 (0.025 to 0.028)	φ1.1 to φ1.4 (0.043 to 0.055)	FCN-723T-T021/H	FCN-723J-G/AM FCN-723J-T/AM	1.2 to 1.6 (0.047 to 0.063)
#28	0.065 to 0.096	0.60 to 0.66 (0.024 to 0.026)				
#30	0.05 to 0.06	0.62 to 0.68 (0.024 to 0.027)	φ0.7 to φ1.0 (0.028 to 0.039)	FCN-723T-T022/H		
#32	0.032 to 0.038	0.60 to 0.66 (0.024 to 0.026)				
#34	0.02 to 0.023	0.58 to 0.64 (0.023 to 0.025)				

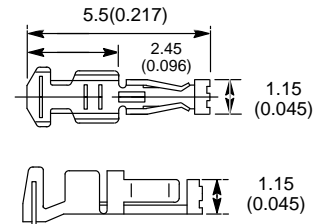
SEMI AUTOMATIC CRIMPING TOOL

Wire AWG	Wire cross-section (mm ²)	Crimp height (mm<in.>)	Wire Diameter (mm<in.>)	Semi-automatic crimping tool		Contact	Stripped length (mm<in.>)
				Main Body	Applicator		
#26	0.1 to 0.16	0.64 to 70.0 (0.025 to 0.028)	φ0.8 to φ1.4 (0.031 to 0.055)	FCN-M110-120 (120V)	FCN-A121	FCN-723J-G/BM FCN-723J-T/BM	1.2 to 1.6 (0.047 to 0.063)
#28	0.065 to 0.096	0.60 to 0.66 (0.024 to 0.026)					
#30	0.05 to 0.06	0.62 to 0.68 (0.024 to 0.027)	φ0.7 to φ1.3 (0.020 to 0.051)	FCN-M110-220 (220V)	FCN-A122		
#32	0.032 to 0.038	0.60 to 0.66 (0.024 to 0.026)					
#34	0.02 to 0.023	0.58 to 0.64 (0.023 to 0.025)					

FCN-723J-*/*M, CONTACT

DIMENSIONS, PART NUMBERS

Loose piece FCN-723J-G/AM
(Sn plating: FCN-723J-T/AM)
Strip form FCN-723J-G/BM
(Sn plating: FCN-723J-T/BM)
(10,000 PCS min./reel)



FCN-724P/724Q/725P728P/728Q***-G/*M
FCN-723J/727B/727J**/*M

SPECIFICATION OF POLARITY TO PREVENT INCORRECT INSERTION (PIN TYPE)

Header
FCN-725P018-G/WM

□ □

Basic type Common

Denotes pin number with pin polarity
For example, 04: Pin 4 is cut or pulled out.

Note: The pin under the triangle in both the header and the socket is pin 1.

Example: The standard specifications of pin numbers with polarity are 04 and the last pin number (if the last pin is 50, the specification is 50).

Socket
FCN-723J018/2M

□ □

Basic type Common

Denotes pin number with pin polarity
For example, 04: FCN-720A01 plugged into pin 4

Do not insert the contact into the housing.

Polarizing key

Unit: mm (in.)

Part number: FCN-720A01

* Minimum order qty: 1000 pcs

BOX PLUG: FCN-724Q/728Q*-G/*M**
IDC SOCKET: FCN-727B/727J*-G/*M**

FEATURES

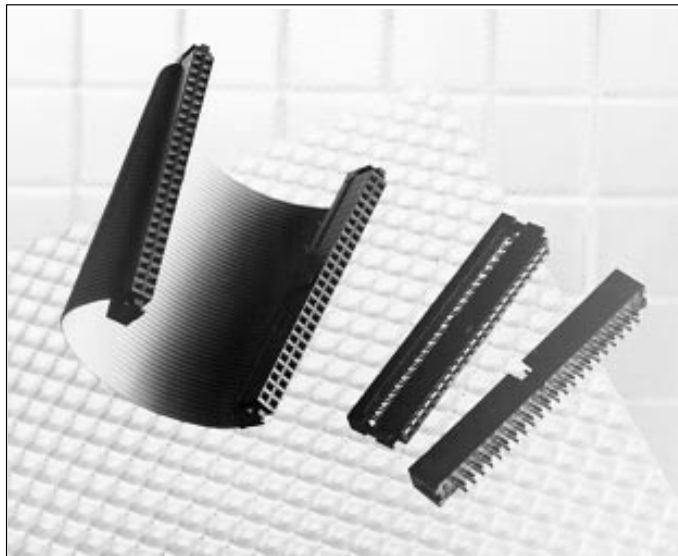
- Contact, terminal are arranged in 2.0mm (0.079in.) grid.
- 1.0mm(0.039in.) pitch flat cable is applied
- Suitable for 2,5 in. HDD connection
- Bump type available
- SMT box plug available

SPECIFICATIONS

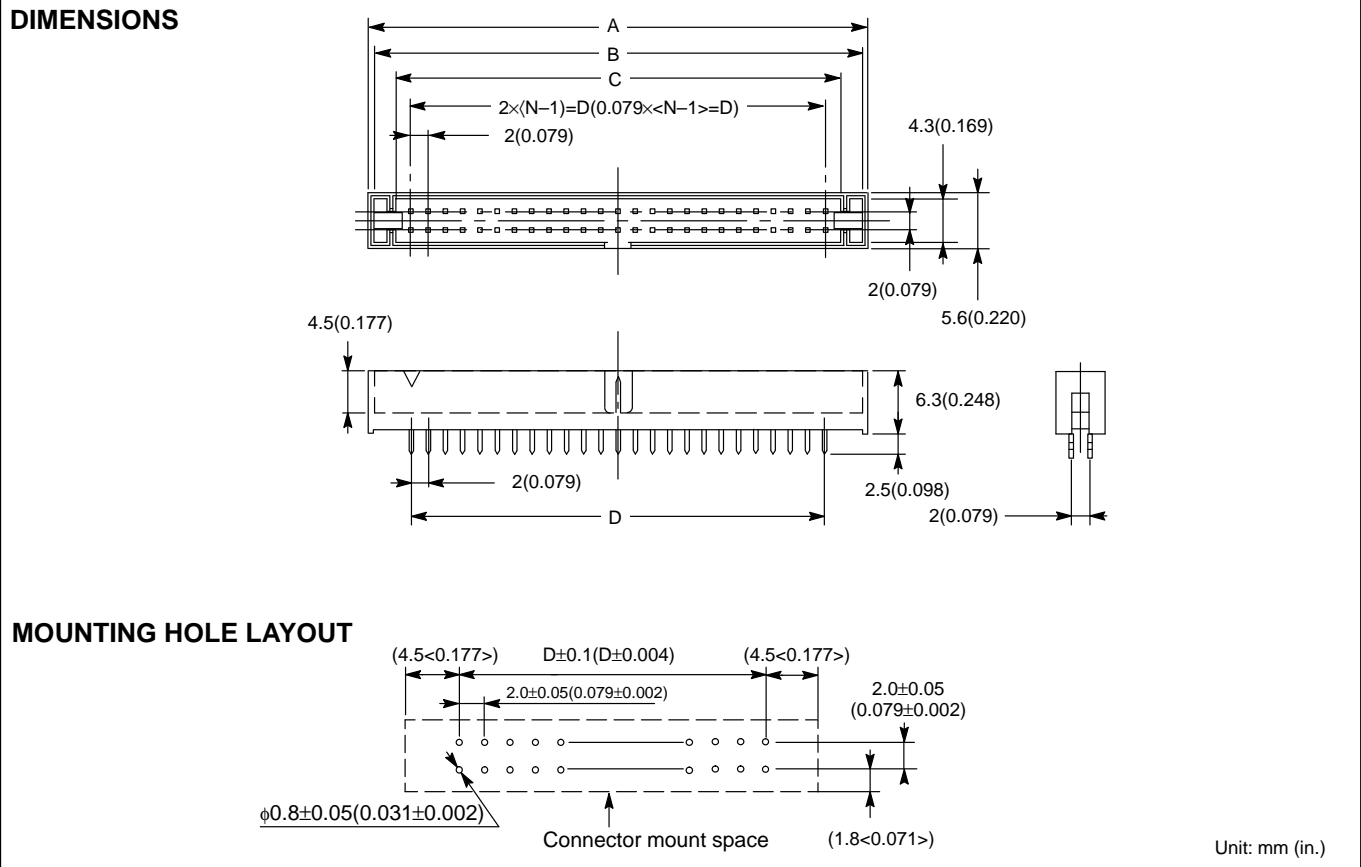
Temperature range	-55°C to -85°C
Maximum allowable current	1A DC
Maximum allowable voltage	250V AC
Contact resistance	20 mΩ max. (6V DC, 0.1A)
Insulation resistance	1,000 MΩ min. (500V)
Dielectric strength	500V AC for 1 minute

MATERIAL

Insulator	Plug: Polyester (U94V-0), PPS resin for SMT typeHousing: PPO resin
Conductor	Copper alloy
Plating	Contact: Gold Terminal: Palladium



FCN-724Q***-G/VM, STRAIGHT BOX PLUG



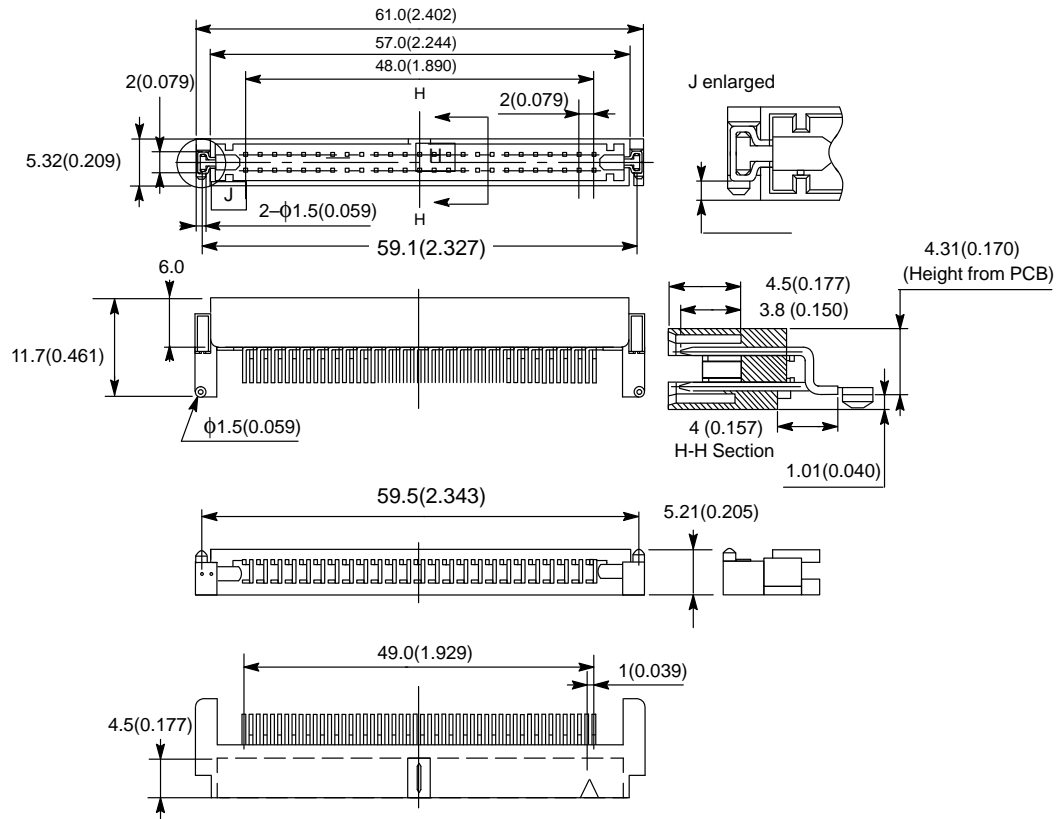
4

PART NUMBERS

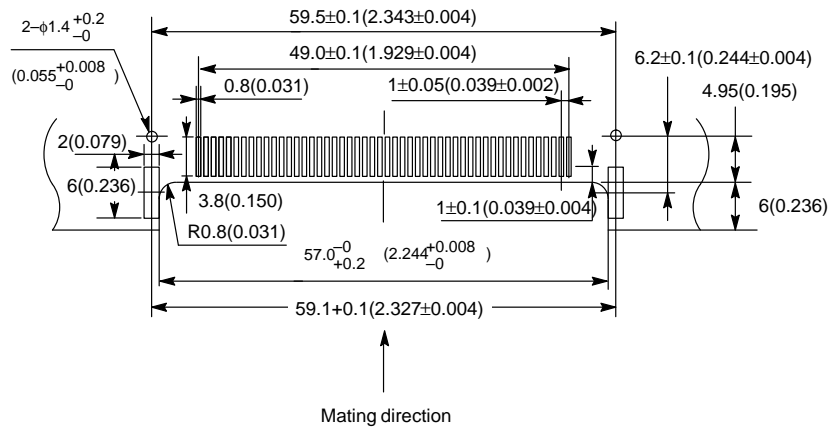
Pos	Part Number	Dimension			
		A	B	C	D
20	FCN-724Q020-G/VM	27.0(1.063)	25.6(1.008)	21.4(0.843)	18.0(0.709)
26	FCN-724Q026-G/VM	33.0(1.299)	31.6(1.244)	27.4(1.079)	24.0(0.945)
34	FCN-724Q034-G/VM	41.0(1.614)	39.6(1.559)	35.4(1.394)	32.0(1.260)
40	FCN-724Q040-G/VM	47.0(1.850)	45.6(1.795)	41.4(1.630))	38.0(1.496)
44	FCN-724Q044-G/VM	51.0(2.008))	49.6(1.953)	45.4(1.787)	42.0(1.654)
50	FCN-724Q050G/VM	57.0(2.244)	55.6(2.189)	51.4(2.024)	48.0(1.890)

FCN-728Q***-G/BM, SMT BOX PLUG

DIMENSIONS



PCB LAYOUT

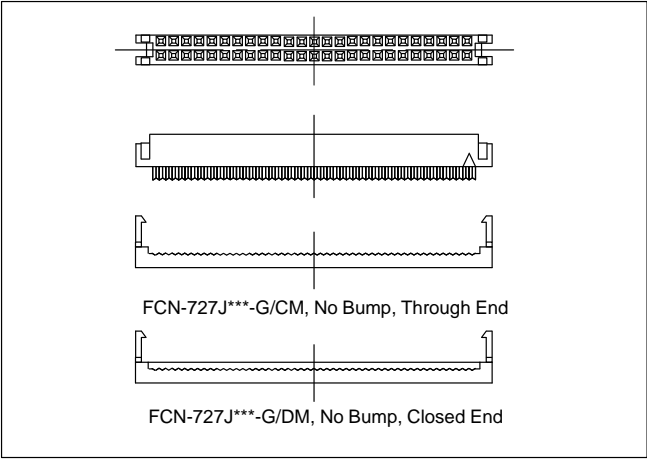
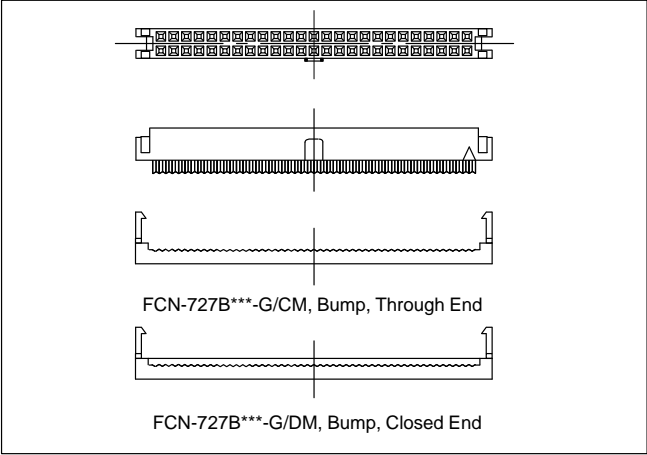


Unit: mm (in.)

PART NUMBERS

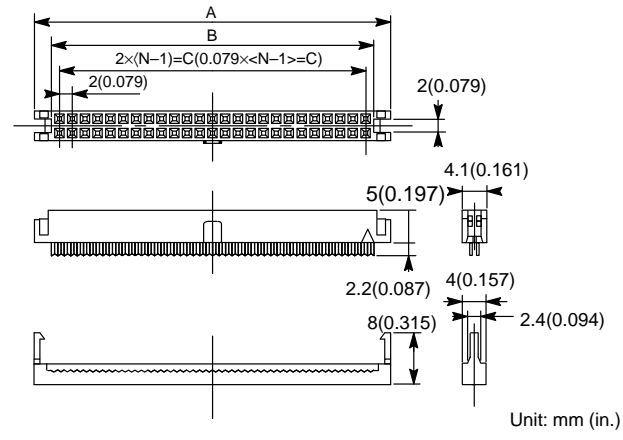
Pos	Part Number
50	FCN-728Q050-G/BM

FCN-724P/724Q/725P/728P/728Q*-G/*M**
FCN-723J/727B/727J/*M**



FCN-727B, IDC SOCKET

DIMENSIONS



PART NUMBERS

Pos	Part Number	Dimension		
		A	B	C
20	FCN-727*020-*/**	24.6 (0.969)	21.0 (0.827)	18.0 (0.709)
26	FCN-727*026-*/**	30.6 (1.205)	27.0 (1.063)	24.0 (0.945)
34	FCN-727*034-*/**	38.6 (1.520)	35.0 (1.378)	32.0 (1.260)
40	FCN-727*040-*/**	44.6 (1.756)	41.0 (1.614)	38.0 (1.496)
44	FCN-727*044-*/**	48.6 (1.913)	45.0 (1.772)	42.0 (1.654)
50	FCN-727*050-*/**	54.6 (2.150)	51.0 (2.008)	48.0 (1.890)

IDC TOOLS

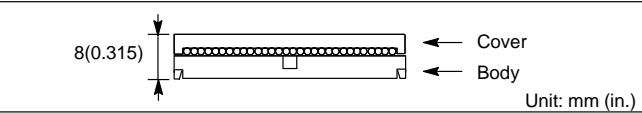
Features

- All tools are easy to use, so even a beginner can install Fujitsu connectors.
- The number of pins can be chaged easily only by setting the connector guide to a specified pin hole.
- The cable cutter remains sharp, providing fast, easy cuts for a long time.
- Instnuction manual for each tool is attached with each.

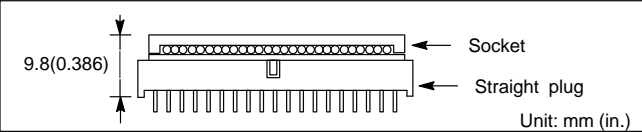
Tool Name	Part Number
Cable cutter	FCN-707T-T001/H
Hand press	FCN-707T-T101/H
Locator plate	FCN-797T-T055/H

MATING DIMENSION

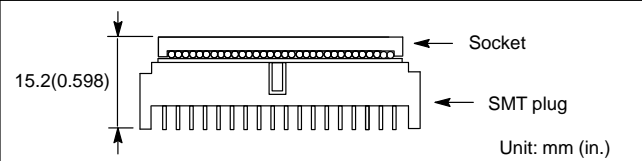
Socket



Socket & Straight Plug



Socket & SMT Plug



<div>Connector model</div> <div>Type number</div>	No. 1	No. 2	No. 3	No. 4
720M	