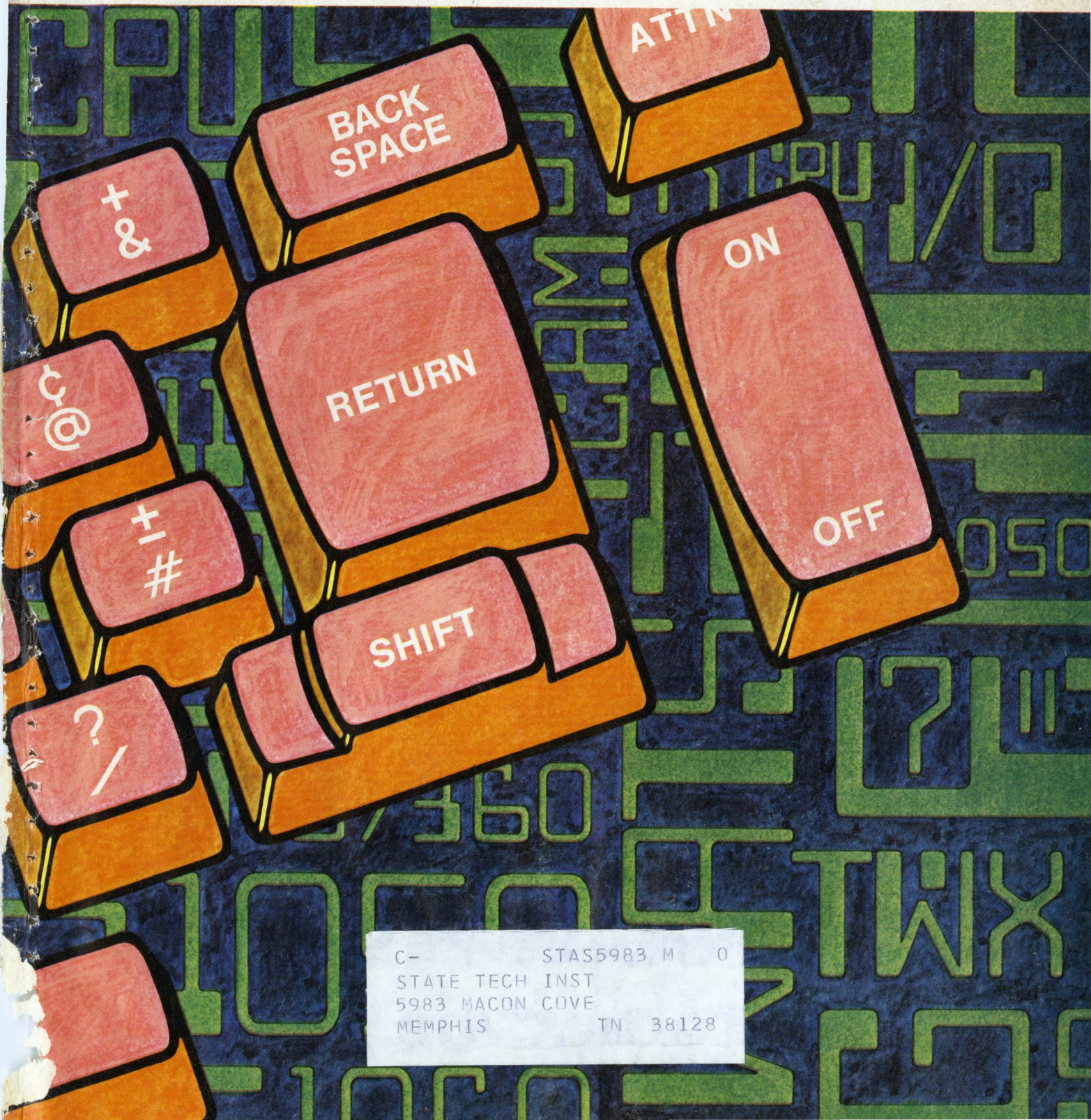


software age

JANUARY 1970

LIBRARY,
STATE TECHNICAL INSTITUTE
AT MEMPHIS



C- STAS5983 M 0
STATE TECH INST
5983 MACON COVE
MEMPHIS TN 38128

**You're in a room
full of people.
But, just for that
one moment,
you're alone.
All alone.**



JPL

You concentrate on one thing: send that data home to earth. In that lonely moment, you ask: can I do it? Be with others who understand such loneliness. They've been there.

Right now openings exist in: Spacecraft Structural Design • Temperature Control Materials & Processing • Ap-

plication of Microelectronics & Transistors • Guidance & Control Systems • Electro Optics • Propulsion Systems Analysis • Space Vehicles Design • Trajectory Design & System Analysis • Systems Design & Integration • Deep Space Support Systems • Telecommunications • Business Systems &

Scientific Programming • TV Image Processing and Electronic Packaging.

Send your resume to:
JET PROPULSION LABORATORY
California Institute of Technology
4806 Oak Grove Drive
Pasadena, California 91103
Attn: Professional Staffing Dept. 1

An equal opportunity employer. Jet Propulsion Laboratory is operated by the California Institute of Technology for the National Aeronautics and Space Administration.

- 5 Letters to the Editor
- 8 Random Input Search Techniques: A Timely Review
Frank Morris
- 13 Concordance Analyzer of Cobol and Fortran Source Programs
Norman D. Peterson
- 15 Conference Countdown
- 17 New Products
- 23 Line Control and Terminal Management in OS/360
—A Proposed Control System
Robert M. Winick
- 27 Financial Currents
- 33 Free Software Listings Forms
- 36 New Applications
- 39 Trouble Tran
- 43 Marketplace
- 45 S/A's Confidential Inquiry Form
- 46 Index of Advertisers

Publisher—Editor David W. French
 Assistant Publisher Bruce H. Dutton
 Managing Editor Elspeth Taylor
 Editorial Assistant Laura Brandt
 Traffic Manager Betsy Pavkovich
 Resume Control Ann Wildeman
 Business Stephenie Jensen
 Circulation Sue Bullington, Linda Klein

CIRCULATION OF THIS ISSUE
MORE THAN 125,000
 BPA Audit Applied For

SOFTWARE AGE

2211 FORDEM AVENUE, MADISON, WISCONSIN 53701
 PHONE: (608) 249-0128 OR (800) 356-8141

R. John Antil

Los Angeles, Calif.: Richard Faust, 9800 S. Sepulveda Blvd.
 (213) 776-0100

San Francisco, Calif.: Ernesto Montano, 595 Buckingham Way,
 Suite 226 (415) 731-8240

Philadelphia, Pa.: Richard D. Clemmer and Phil Servus,
 315 Main St., Collegeville, Pa. (215) 489-3130

Houston, Texas: W. Royce House, 4040 Southwest Freeway,
 Houston, Texas (713) 622-2868

SOFTWARE AGE is published monthly by

press tech inc.

2211 Fordem Avenue, Madison, Wisconsin 53701

Subscription free to qualified readers. Others, 10/yr. Individual copies, \$1. Foreign subscriptions, \$15/yr.

For change of address please return your address label from the magazine.

Controlled circulation postage paid at Madison, Wisconsin.

Publisher's Page

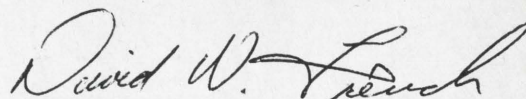
We marked the end of the decade with the beginning of SOFTWARE AGE's free program listings campaign (pages 32-34). Indications are that it is going to be a successful and informative presentation. Hundreds of programs have been submitted during the first week of the campaign, and the inquiries and requests for additional listing forms certainly indicate that this industry feels the need for the service and has every intention of contributing—mightily. The first publication of the listings will be in the February issue. The semi-annual summaries will be published during the months of the Joint Computer Conferences.

Many SOFTWARE AGE readers will see the listings for the first time during COMPSO 70 in Chicago. The COMPSO exposition is focused on the software and peripheral facets of the computer industry and should contribute to the easing of some of the incredible logistics associated with over attendance and under exposure at the Spring and Fall Joint Computer Conferences. SOFTWARE AGE staff members will report on the Chicago exhibition with a projection to the third COMPSO regional convention in Los Angeles during April. The Spring Joint/Atlantic City—COMPSO/Los Angeles debate has made *polarization* more than a word with SOFTWARE AGE staffers.

The introduction of a letters column in this issue is an indication of the volume of mail we receive. SOFTWARE AGE will continue to publish representative samples and whenever we have the opportunity, opposite points of view will be well represented. Reader commentary both governs and directs all responsive media. We welcome and encourage it.

During the first quarter of 1970, thousands of you will receive SOFTWARE's reader qualification forms. While we have made them as brief and straight-forward as possible, they do require a few moments to complete. Your cooperation and time will be appreciated by S/A and certainly by the much-maligned and unheralded heroines of publishing—the circulation department. The information you include on the forms represents the input documentation of the magazine and you are the source. We rely on your assistance and we will certainly continue to appreciate it.

Ambitious programs are only that without capable people to nurse them through to a successful fruition. In recent weeks we have added Bruce H. Dutton, Walter Schaw, John Antil and Philip Servus. Bruce has been Associate Publisher, Publisher and Sales Manager of magazines such as "Marine Products," "Advertising Age," "Advertising & Sales Promotion" and will contribute in and through S/A to examine some of the practices and questions this industry must face-up-to regarding the marketing and purchasing of software and services. Phil Servus has joined us in sales and service and will be located in our suburban Philadelphia office. John was with 3M's sales department prior to joining S/A in sales and service. Wally Schaw has been managing editor of a publishing group of 10 newspapers, Assistant Secretary of the American Foundry Society, Assistant Publisher of "Modern Casting" magazine and has directed many in-depth and supervisory studies of computer applications. He will be directing much of his effort toward statistical research in and with S/A's more than 125,000 subscribers.



Programmers/Analysts:

Give IBM a hand and we'll try to make it a free one

If predictable thinking were what we wanted, we'd just program it. But what we're looking for are imagination and ingenuity.

If you have these qualities, and you qualify for a job with IBM, you can be sure you'll get to use them.

Immediate openings

There are openings for Programmers/Analysts and Systems Programmers at IBM Endicott, N.Y.

You'd design, program, test, and install software and application programs for our new Information



IBM programmers and systems analysts work in small teams on an IBM System/360.

Systems. These systems will aid manufacturing and production planning functions at all IBM facilities.

You will be involved with real-time and on-line processing applications, using IBM System/360 programming.

A Bachelor's degree and at least a year's experience are required. You should have a knowledge of basic assembler language and large-scale computer concepts.

Grow with IBM

Today's major growth industry is information handling and control.

And IBM is a leader in that field. Our job is to help IBM improve its manufacturing and production planning functions by applying information handling and control techniques.

If you're a problem-solver who wants a personal sense of achievement for your hard work in a growth company, consider IBM.

Call or write

Call Dom Santoni collect at (607) 755-2855. Or write him at IBM Corp., Dept. DA1014, 1701 North St., Endicott, N.Y. 13760.

An Equal Opportunity Employer

IBM®



LETTERS

Dear Sir:

In reference to Lt. Colonel Edwin G. Hudspeth's article "Use of Mathematics to Perform Bit Manipulation and Reduce Storage Requirements in Remote Terminal Operations" in the November issue of *Software Age*, I submit the following suggestion for improvement.

Rather than divide by powers of 2, one logical AND one compare would determine if a document contains information concerning any combination of key word bits. This technique will save an enormous amount of computer time when compared to the technique described in the above article.

Would you please forward this suggestion to Lt. Colonel Hudspeth.

Sincerely yours,
CHARLES E. CLOUSE
Houston, Texas

Dear Sir:

Thank you for Mr. Clouse's letter of December 2. I agree wholeheartedly with him. I had written our document search program in two versions, one using a mathematical search (dividing by powers of 2) and one using the logical AND operation. I only covered the mathematical one in the article since I felt this technique could be used in BASIC or any other language that didn't have the logical operators.

For your readers information, to use the logical AND operation, you must first set up an inquiry word. If you wanted to search for all documents containing the subjects represented by keyword numbers 2, 5, 8, 29, and 31, the inquiry word would be $2^2 + 2^5 + 2^8 + 2^{29} + 2^{31}$. We could then use FORTRAN statement CALL AND(X,Y,Z) where X was our inquiry word, Y was our data word and the result of the logical AND operation was stored in Z. In terms of Boolean logic, Z would be the intersection of the bits in X and Y. If the document covered the five keywords previously mentioned Z would be equal to X and a simple comparison would show this.

Since there are more keywords in the ASI system than the number of bits in a word, each document is represented by three data words and therefore a search requires three inquiry words. To speed up the process, as soon as it was found that any one inquiry word wasn't equal to its in-

tersection with the appropriate data word, that document was rejected.

I appreciate Mr. Clouse's comments and thank him for them.

Sincerely,
EDWIN G. HUDSPETH
Lt. Colonel, USAF

Dear Sir:

Most of the suggestions of Arline Walter and Marilyn Bohl in "From Better to Best Tips for Good Programming," *Software Age*, November, 1969, are accepted good programming practice. However, I believe suggestion G in "Efficiency in Compilation/Execution" is sufficiently misleading so as to merit further explanation. The authors suggest the use of label arrays to aid in compile-time storage conservation and to help minimize the number of internal procedures. What the authors fail to mention is that if PL/1 GO TO statements are coded as shown in their example, then the execution time for each GO TO is increased by an order of magnitude relative to similar forms of the GO TO statement. The reason for this is that the elements of the label array in the authors' example may assume the value of labels defined in enclosing blocks. Thus a test at execution-time is necessary to determine if the value of the array element is a local label. If a label array (rather than a single label variable) is to be used, then execution speed would be improved by the coding shown below. Of course, the significance of the improvement depends upon the amount of processing to be performed between the GO TO statements.

```
DCL L(4) LABEL(L1,L2,L3,L4)
      INIT(L1,L2,L3,L4);
```

```
      .
      .
      .
      I=2;
      GO TO L3;
```

```
      L2:
      .
      .
      I=4;
```

```
      L3:
      .
      .
      GO TO L(I);
```

L4:
Obviously, the compile-time advantage cited by the authors is lost. There is also more labor in preparing the DECLARE statement. Certainly the form of coding used by the authors is convenient in use, and hopefully the efficiency of the PL/1 object code for that form will be improved in the future, perhaps by the restriction of that form's array element values to local labels only.

Sincerely,
LAWRENCE SCHUTTE
West Lafayette, Indiana

Dear Sir:

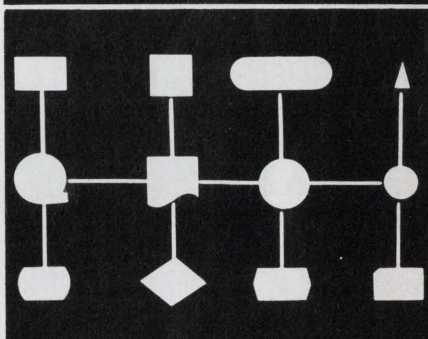
The November, 1969 issue of *Software Age* contains an article starting on page 47 entitled "PL/1 Programming Aids from Better to Best Tips for Good Programming" by Arline B. Walter and Marilyn Bohl.

As a teacher of information systems and coordinator of our basic programming course which teaches our School of Business students the PL/1 language, I request your permission to reproduce copies of the above mentioned article for our faculty (20 copies). Your cooperation will be appreciated in this matter. Reproduction will be done by Xerox. If additional copies could be made, I would use them in my advanced systems (undergraduate and graduate) courses next quarter (probably an additional 30-40 copies). Obviously due credit would be given the authors and your publication. Probably if we could use the article in class also, I would have our secretaries mimeograph it.

Sincerely yours,
LLOYD J. BUCKWELL
Bowling Green, Ohio

Editor's comment: We will be including a Letters to the Editor column every month, so let's hear from you on the Editorial content of *Software Age*.

PERT-PROGRAMMING




MAGNETIC SYMBOLS
Reduce Work and Speed Operations for

- SYSTEMS ANALYSTS
- PROGRAMMERS
- METHODS SPECIALISTS

MINUTEMAN Magnetic Symbols provide fast, simple and highly visual means of handling PERT, flow charts, diagramming and scheduling problems. Made of sturdy Vinyl "write-on" plastic, in colors. Symbols are easily marked with grease pencil and wiped off. Last indefinitely. The ultimate in convenience, efficiency and economy.

Write for FREE catalog on the most modern and flexible visual programming and scheduling systems.

**MAGNETIC AIDS, INC.**
11 WEST 42nd STREET, NEW YORK 36, N. Y.

For more information, circle No. 19
on the Reader Service Card

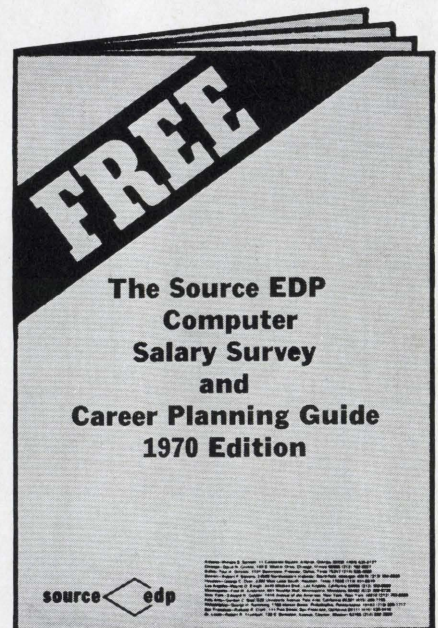
Dynamic 1970 opportunities for computer professionals.

And the salaries they command.

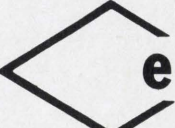
It's in the all new and expanded 1970 edition of our Computer Salary Survey and Career Planning Guide. And it's free.

Included are: salaries broken down into 28 levels of professional and management classifications, ranging up to \$75,000; for the first time, a comprehensive review of the new and growing computer services industry (facilities management, time sharing, systems engineering services, software development, education); effects of unbundling; analysis of positions and industries; how and when to change your job and plan your career.

Information in this 10,000-word report was compiled and analyzed by the experts at Source EDP—the largest nationwide recruiting firm devoted solely to the computer professional. To speed delivery of your free copy, write your nearest Source EDP office. Or circle the reader inquiry card.



Atlanta—William S. Barnett, 11 Corporate Square 30329, (404) 634-5127
Chicago—David B. Grimes, 100 S. Wacker Drive 60606, (312) 782-0857
Dallas—Paul K. Dittmer, 7701 Stemmons Freeway 75247, (214) 638-4080
Detroit—Robert C. Stevens, 24500 Northwestern Highway, Southfield, Mich. 48075, (313) 352-6520
Houston—George P. Dyer, 2300 W. Loop S. 77027, (713) 621-6070
Los Angeles—Wayne G. Emigh, 3470 Wilshire Blvd. 90005, (213) 386-5500
Minneapolis—Fred L. Anderson, 801 Nicollet Mall 55402, (612) 332-8735
New York—Edward R. Golden, 1414 Avenue of the Americas 10019, (212) 752-8260
Palo Alto—Gordon M. Best, 525 University Ave. 94301, (415) 328-7155
Philadelphia—George D. Ramming, 1700 Market Street 19103, (215) 665-1717
St. Louis—Robert T. Trumbull, 130 S. Bemiston, Clayton 63105, (314) 862-3800
San Francisco—Richard O. Clark, 111 Pine Street 94111, (415) 434-2410
Union, N.J.—Daniel R. Mickel, 2204 Morris 07083, (201) 687-8700.

source  edp

For more information, circle No. 2 on the Reader Service Card

At RCA there's a place for total systems architects. They plan the software for advanced computers and advanced computers for the software.

Advanced. That's the key word for high level broad systems people at RCA.

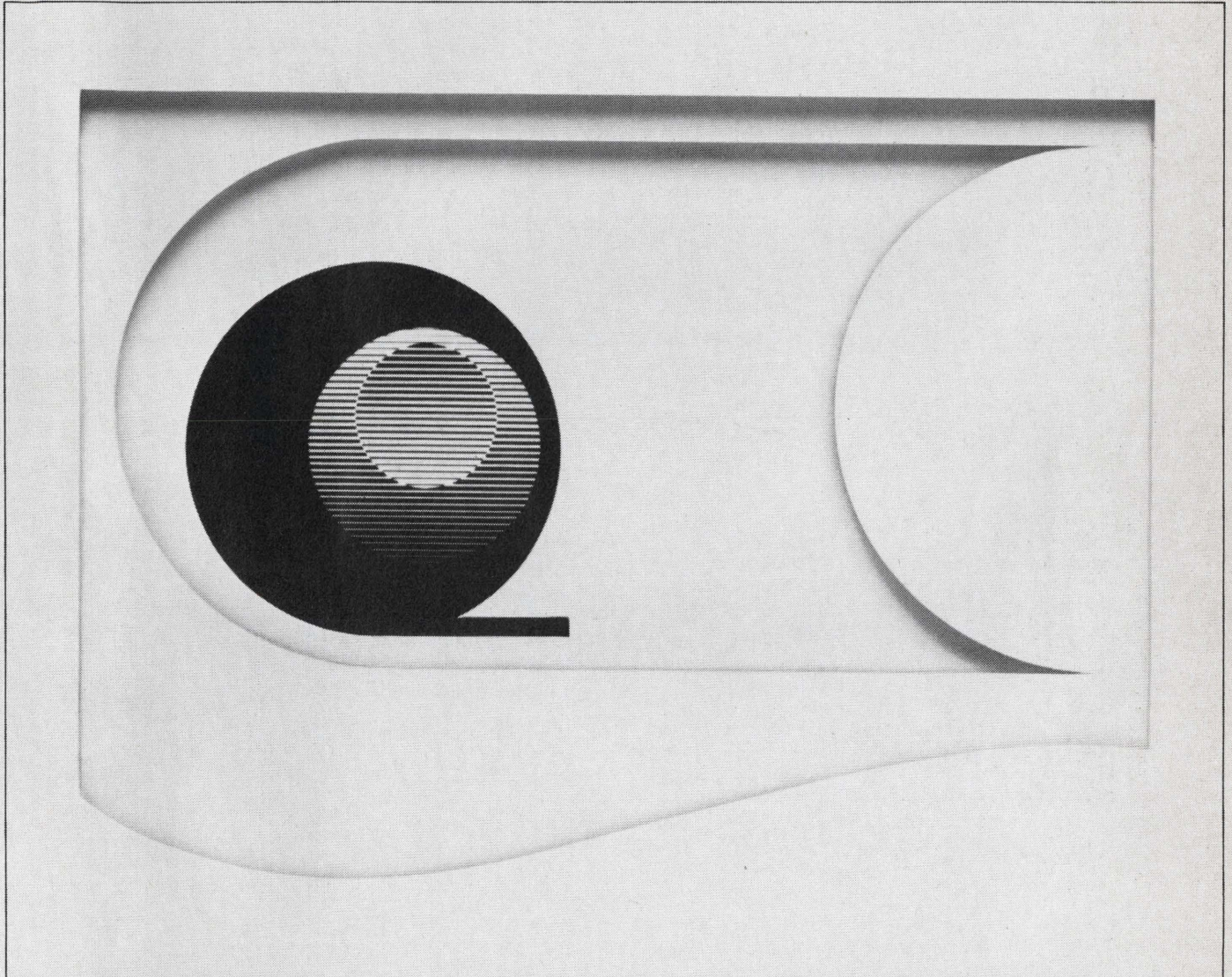
That accounts for the 18-month lead they have on the rest of the field in large, time-sharing, multi-function, multi-user operating systems. It tells you that the thrust into the future is a powerful one, with a lot of

attention going to software design automation.

There's room here for EDP professionals who are looking for a chance to put their own advanced thinking to work. In an atmosphere where advancement is the key word in every sense of the term . . . where you work in small units and gather in ideas and direction from some of the best minds in the business. If the fastest-growing sector of the computer market seems a likely place for you, come advance. Your experience should be in any of

the following: programming; language processing; control systems; operating systems; utility systems; communications systems; micro-programming; field sales and system support; education or product planning.

Write to: Mr. Thomas Beckett, Dept. 20, RCA Information Systems Division, Bldg. 202-1, Cherry Hill, New Jersey 08101. We are an equal opportunity employer.



RCA
COMPUTERS

RANDOM INPUT TECHNIQUE A TIMELY R

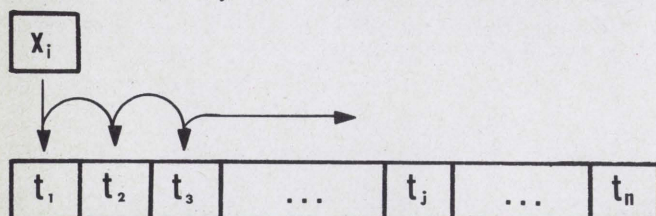
by
Frank Morris
Corporate Systems Consultant
Bristol Myers Co.

During the past decade the programming world has advanced from a subculture of octal bit-manipulating enthusiasts to a sophisticated mass of higher language conversationalists. As teleprocessing demands faster response systems, the tools of the assembly and machine language program are being re-applied to improve the throughput efficiency.

In this article four searching techniques will be described and analyzed. The author/Mr. Morris has omitted data-self-addressing because this powerful method is generally applicable to editing procedures rather than to table look-up operations. The logic flowcharts are in general form and the weighting factors used in the comparisons represent instruction timings from several computers.

Sequential Search

This is the most commonly used method of table look-up. The internal table ($t_1 \rightarrow t_n$) is sorted and the record value (x_1) is random (i.e. unsorted). In its simplest form the search proceeds from the beginning (t_1) and compares each table item (t_j) until the record value (x_1) is either



SEQUENTIAL SEARCH

located or until it is determined that x_i is not in the table. This may be pictured as: (see above)

With a table sorted in ascending order as long as x_i is greater than the table value the search continues until the end of the table. If a less-than ($t_j > x_i$) or end-of-table

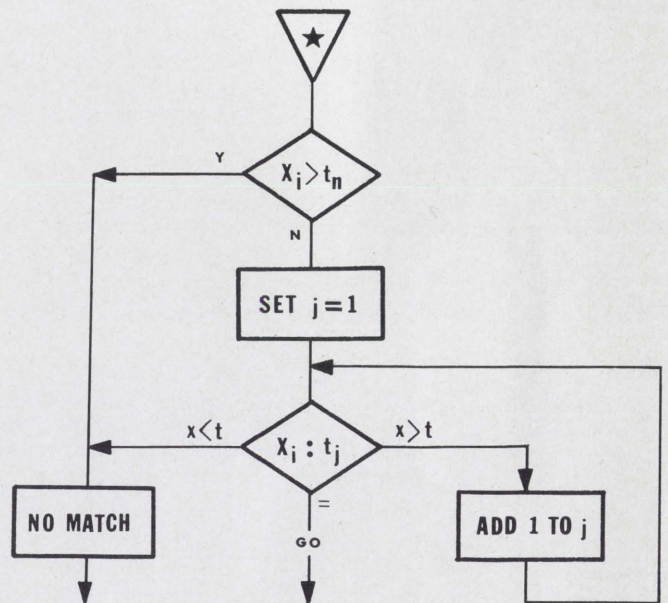
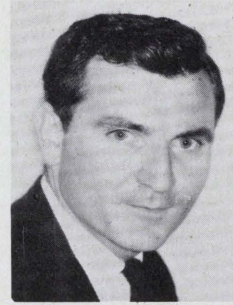


Figure 1

SEARCH

ES:

VIEW



Mr. Morris has been an EDP Consultant for Touche Ross, a Project Leader at Allied Chemical and an EDP Officer in the Air Force. He has a BA in Economics (1961) and an MS in Mathematics and Statistics (1966) from Rutgers University. Mr. Morris is currently working as a Corporate Systems Consultant for the Bristol-Myers Co.

($x_i > t_n$) condition occurs, we have a no-match situation ($x_i \neq t_1 \rightarrow t_n$) and an appropriate *error* path is executed. The logic of the sequential search is given in fig. 1.

Each new x_i is checked from the beginning of the table since these values are assumed to be unsorted. The end-table ($x_i > t_n$) is placed first in order to remove it from the major loop ($x > t$). If an "increment-compare-branch" or tally type instruction is available, it may be used instead of the "Add 1 to j" instruction and obviate the need for a separate end-table check.

Effectiveness

With a sequenced table and random input the average number of compares executed will be $(n + 1)/2$ (n being the number of table items). But in analyzing a method we must consider the overhead involved. The overhead consists of add, subtract, branching and set-up instructions utilized in the loop. The timing chart below relates the number of instructions executed for 100 x values which will match each table item. The weighting factors establish

TIMING CHART—SEQUENTIAL SEARCH

	Major Compare	Add 1	End Table	Set Up
No. Exec.	5050	4950	100	100
Weight	5050	2475	100	25

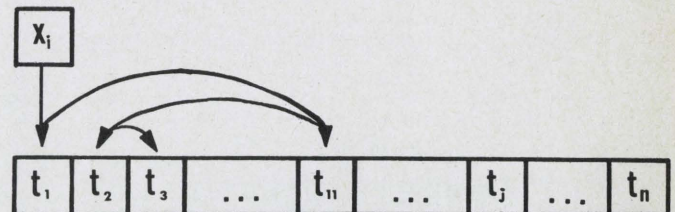
Total for 100 $x_i = 7650$
Avg. Equiv. Time = 76.5

a rough equivalency between the different instructions and a 5 character compare instruction.

Space requirements for storage in core are only the table size and about 8 instructions. Its wide use denotes the ease of forethought and programming involved. In regard to flexibility the table is normally modified and then re-entered into core. A separate program for adding, deleting and modifying would resemble a standard update routine.

Spaced Sequential Search

This variation on the simple sequential reflects in its procedure a better attempt at dealing with the low probability of a given x_i matching a given table value. The procedure is changed in that that t_j is increased by a larger value and then decreased on a less-than condition. This may be pictured as:



SPACED SEQ. SEARCH

The logic (fig. 2) is similar to the sequential but with the addition of a sub-counter (g). On a greater-than condition the normal g value of 10 is added to j causing jumps of 10 in the table. On the first less-than condition we regress 9 items and then move forward one item at a time.

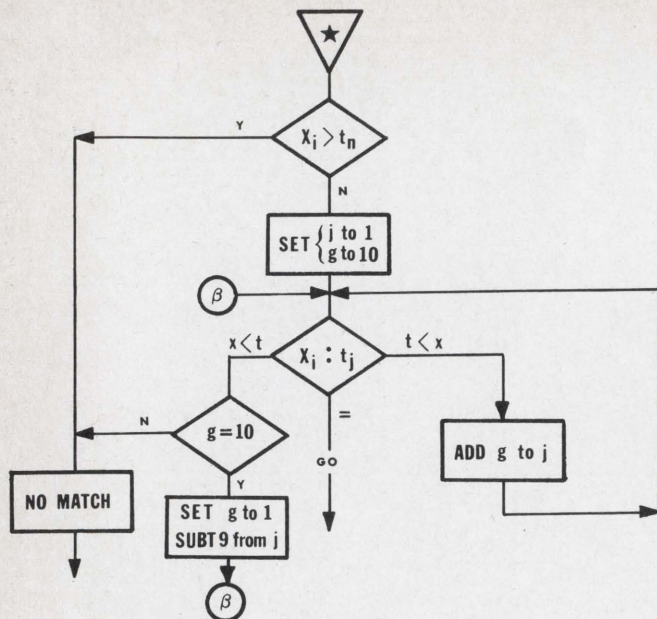


Figure 2

TIMING CHART—SPACED SEQUENTIAL

	Major Compare	Add 1	End Table	Set Up	Aux. Add/Subt	Aux. Compare	Aux. Set Up
No. Exec.	1090	990	100	200	90	90	90
Weight	1090	495	100	50	45	45	45

Total for 100 $x_i = 1870$
Avg. Equiv. Time = 18.7

PROGRAMMERS—ENGINEERS

Washington, D.C. • New York • New Jersey • New England • Philadelphia • Chicago • Minnesota • Texas • Ohio • Florida • Arizona • California • Southeast Asia

If you have a B.S., M.S. or Ph.D. and you are experienced or interested in any of the following, contact us immediately for free career counseling and an objective analysis of your position in today's market.

- | | | |
|---------------------------|----------------------------|--------------------------|
| PROGRAMMERS | • Systems Simulation | • Digital Logic Design |
| • Management Info Systems | • Software Development | • Digital Circuit Design |
| • Information Retrieval | • Communications | • Digital Communications |
| • Command & Control | SYSTEMS ENGINEERS | • Systems Integration |
| • Aerospace Applications | • Reliability Analysis | • Soft Ware Analysis |
| • Real Time/On Line | • Digital Computer Systems | • Oceanography |

Salaries range from \$8,200 to \$25,000. Our client companies assume all fees. Forward resume in confidence, or call (collect): Mr. Martin E. Sheridan (Area Code 703) 524-7660.

SHERIDAN ASSOCIATES INC.

1901 North Fort Myer Dr., Suite 1010, Arlington, Virginia 22209
(Just over the Potomac from Washington, D.C.)
Personnel Consultants to the Computer Industry
Write for application and wage/salary survey.

For more information, circle No. 10 on the Reader Service Card

Recruiting and Placement Specialists to the Computer and Information Industries. Nationwide Opportunities. Confidential. Employer Retained. Send Resume or Complete the Software Application.

contact: lorne evje
computer personnel agency INC.

12 geary street san francisco, california suite 805 94108

Effectiveness

By spacing the compares significant time is saved. With the same table size ($n = 100$) and 100 matching x_i , the timing chart below renders an average equivalency compare rate of 18.7. The sequential search rate was 76.5.

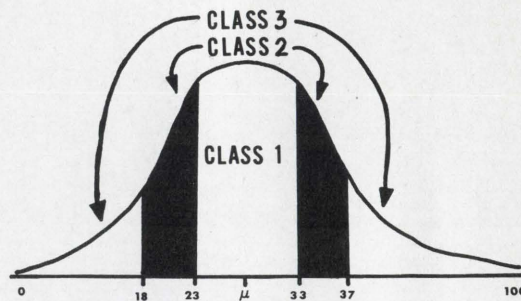
The amount of the increment g can be varied in order to find the most efficient value for a given table. For evenly distributed x values $n/10$ is generally a suitable g increment.

The core storage requirement has increased by four instruction lengths. The flexibility of the table in respect to modification is the same as in the use of the sequential search.

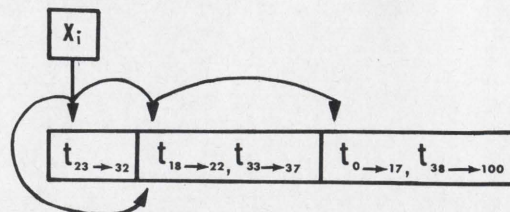
Probability Search

A third variety of the simple sequential pattern is to arrange the table values into an expected frequency array. The adequacy of the array depends on the efforts made in the probability analysis. There are several ways to accomplish this analysis. Some data will fit into a standard pattern and statistical tables can be utilized. In instances where rougher approximations will suffice, the pattern of expected matches can be determined by consulting relevant sources. If we were doing sales analysis, the table information might originate from volume figures in the sales department. Another way is to empirically accumulate data by placing counters after the equal-to condition in the search logic.

Many types of tables are conducive to normal curve analysis. In a theoretical actuarial application our table is the age range of potential policy holders. The problem is to match an age and then extract insurance data from the table. The range of ages is from 0 to 100 years and the average age (X) is computed to be 28 years. From samplings of computer requests, the standard deviations (s) is computed at 4.3 years. These derived statistics, X and s , are used as approximations for the population parameters μ and σ . From a "Table of Areas of the Normal Curve" we select an interval for our first comparison class. If we select 28 ± 5 years as our class, we are using a 1.162σ interval. From the Normal Curve table we find that this will circumscribe about 75% of the expected input. Our next class is conveniently a 1σ range outside the limits of our first class (i.e., 18-22.9 and 33-37.9 years). This second class will account for 22½% of the expected x values. The remainder of the ages can be placed in a third class. The chart below pictures the distribution and the pattern of the search.



PROBABILITY SEARCH



Since the probability search is a customized technique the program is difficult to relate as a generalized concept. For a specific size and number of classes, a specific number of modification loops are required. For the given example a simple loop is adequate since all possible age values in the range 0 to 100 are included in the table. Only the end-table compare provides a no-match route. The logic for this example is rendered in fig. 3.

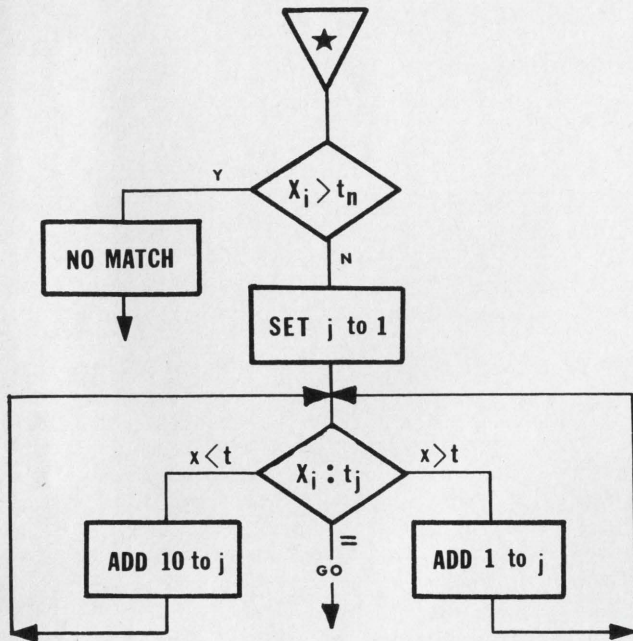


Figure 3

The less-than "Add 10 to j" saves extra compares on 12½% of the x values (0-22). In following the logic it is obvious that we are double-checking some values (e.g., if $x_i > 32$, it is therefore $> 18-22$). However to avoid this redundancy, another compare (end-class-1) would have to be inserted in the major loop. In doing this we would increase our overhead on 75% of the x values by 5 compares and only alleviate the double-checking of the 18-22 range (11¼%). Though not efficient in this instance, the attempt at perfect efficiency should be pursued to produce the best results. In other distributions, especially those with numerous classes, it is often better to use an index and search each class separately.

Effectiveness

For a table distributed as in our example, the timing chart below shows a great saving over both the simple and the spaced sequential techniques. The sequential and spaced required an average of 76.5 and 18.7 equivalent compares respectively.

TIMING CHART—PROBABILITY SEARCH

	Major Compare	Add 1	End Table	Set Up	Aux. Add/Subt
No. Exec.	757.3	660.5	100	100	13.3
Weight	757.3	330.2	100	25	6.7

Total for 100 $x_i = 1219$
Avg. Equiv. Time = 12.2

The probability technique may not always produce such exceptional results. With bi-modal and flat-topped distributions the results will be less impressive.

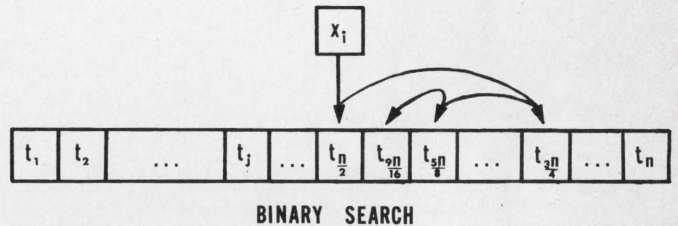
In our example the routine required 10 instructions, two more than the sequential. This is a variable figure dependent on the complexity of the class structure. Flexibility in the general case is a little more difficult since new table items must be placed in the proper class rather than merely sorted into the table sequence.

Binary Search

The name binary is given to this technique because the maximum number of requisite comparisons is expressed as a power of 2. For a table size less than 2^n , the number of compares will be n or less. Some table sizes and compare rates are:

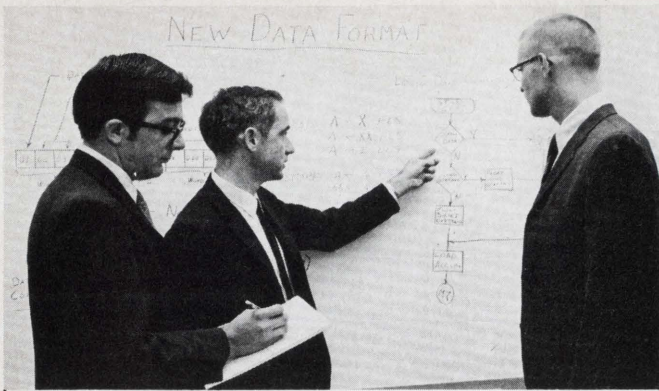
Table Size (t_n)	Maximum Compares
8- 15 ($<2^4$)	4
16- 31 ($<2^5$)	5
32- 63 ($<2^6$)	6
64-127 ($<2^7$)	7
128-255 ($<2^8$)	8

The binary, like the preceding techniques, utilizes a sorted table. The first comparison is made against the center item in the table. If $x_i > t_j$, the next compare will be in the center of the right half of the table. Subsequent hi-lo results move the compare to the center of the remaining relevant portion of the table. This can be pictured as:



The logic of a binary search can be accomplished by using a divide instruction or through the use of an index. Since a divide is generally one of the most time consuming instructions, the index is preferable. The logic is shown in fig. 4.

The end-table check is not necessary since the number of compares is used for control. In the flowchart the index (1_k) provides for a table size up to 127 items. To locate item 99 the following items would be compared: 64, 96, 112, 104, 100, 98 and 99. The binary search may be used



Burroughs Impressive Growth Based on People

Burroughs people dedicate their talents and energy to a common goal—product excellence. The result? 1968 earnings were \$43 million—up 24%, incoming orders were up 52%, revenue in '68 was \$655 million—up 18%... a symbol of men who respect the correlation between quality and success.

Our current Pasadena and Santa Barbara expansion programs have created positions for software and hardware professionals in Operating System and Compiler Development, Design Automation, Linear Programming, Diagnostics, and Simulation. We are looking for people with a variety of backgrounds... primarily degreed types in such disciplines as Computer Science, Electrical Engineering, Mathematics, and Physics who have from zero to five years experience. Other qualified candidates are invited to contact us, too.

We offer:

- individual recognition
- non-defense industry
- professional environment
- Pasadena or Santa Barbara locations
- ever-increasing growth and expansion

Call us now. The exciting things we're doing at Burroughs may mean a new career for you.

If your location preference is:

Pasadena	Santa Barbara
Send your resume to:	Send your resume to:
M. R. Olson	G. R. Koebler
Burroughs Corporation	Burroughs Corporation
460 Sierra Madre Villa	6300 Hollister
Pasadena, Calif. 91109	Goleta, Calif. 93017

Burroughs Corporation 
An equal opportunity employer

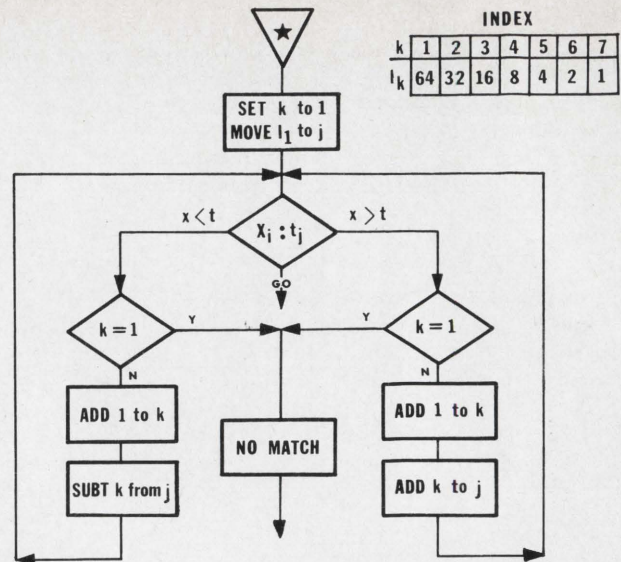


Figure 4

for tables not fitting exactly a power of 2. The starting point is still the center, but an additional 1 is often needed in the index.

TIMING CHART—BINARY SEARCH

	Major Compare	Add 1	Set Up	Aux. Add/Subt	Aux. Compare
No. Exec.	581	481	200	481	481
Weight	581	240.5	50	240.5	240.5

Total Time for 100 x_i = 1353
Avg. Equiv. Time = 13.5

Effectiveness

The timing chart below is for a binary search on a table with 100 items. The first compare is against the 50th item.

This technique is more efficient than the sequential and the spaced. It falls behind the probability search in our example, but would be better than many probability applications. The greatest advantage of the binary search is that a maximum time for an x_i is far less than in any of the other approaches. Our timing has been for the average x_i . The figures below are for the "worst case" maximums. For most searches the worst case is one at the end of the table.

TIMING—MAX. COMPARES FOR AN X VALUE

Search Type	Equivalent Compares
Sequential	181.2
Spaced Seq.	37.2
Probability	180.4
Binary	18.0

There are 13 instructions in the flowchart for the binary search. Space required for the table is an item longer at times to provide for easier manipulation at the end of the table. If the index is placed before or after the table, the table size can be changed without program modification.

A variation, on the straight binary, is useful for larger tables. The table is divided into groups representing some characteristic of the data (e.g., the first digit). The proper group is determined and the binary loop is modified to reference the group. This variation is best when the group sizes are similar. In situations where core is available and time is critical, the search loop can be written out fully.

Concordance Analyzer of Cobol and Fortran Source Programs

by Norman D. Peterson

In modifying or diagnosing a program, a suitable cross-reference listing is often desired. Here is a self-contained and unusually short Cobol program for producing such an index for either a Cobol or Fortran source program. If the program begins with a header for an IDENTIFICATION DIVISION, Cobol will be assumed. Otherwise the program will be treated as Fortran. The program includes Fortran comment cards in the indexing process, but assumes that these do not contain any information in positions 2 through 6.

The cross-reference program, illustrated in the accompanying figures, contains its own sort and presents for each statement number, variable, Cobol verb, procedure name, and literal, not only the location where each is encountered, but also the full context of each line in which it appears. For this reason, the resultant listing has been referred to as a concordance index rather than as merely a cross reference.

In the accompanying figures, the IDENTIFICATION and ENVIRONMENT divisions have been left for the user to add. The program has been implemented and tested on a CDC 6400 computer, and is in fully operational, although not necessarily final, form. Only a basic form of the program is presented, not only for the sake of brevity, but also so that the reader might be free to embellish the program according to his own needs.

After brief experience with the program, the reader will most likely wish to make refinements in format and editing. As with a typical concordance or keyword-in-context index, it will of course produce a considerable amount of chaff. Although the user can ignore irrelevant entries, it may be more convenient if modifications for chaff reduction are tailored to the needs of the user. In addition, to locate lines in their original sequence, it is assumed that they are numbered sequentially for identification. Relative location for Cobol programs is generally provided by the content of positions 1 through 6. However, especially for Fortran programs, the reader may wish to build in automatic line numbering in positions 73 through 80.

PROGRAM		NAME	PAGE 2 OF
ROUTINE		DATE	IDENT
SEQUENCE NUMBER	A	B	STATEMENTS
			10 20 30 40 50 60 70 80 90
			FD GENERATED-PRINT-FILE
			BLCK CONTAINS 1 RECRD
			RECRD CONTAINS 132 CHARACTERS
			LABEL RECRDS OMITTED
			DATA RECRD IS GENERATED-PRINT-LINE.
			O1 GENERATED-PRINT-LINE.
			02 CCC PICTURE X.
			02 KEY-PHASE.
			03 CHAR2 OCCURS 49 TIMES PICTURE X.
			02 GAP PICTURE XX.
			02 COBBL-LINE PICTURE X(80).
			FD SORTED-PRINT-FILE
			BLCK CONTAINS 1 RECRD
			RECRD CONTAINS 132 CHARACTERS
			LABEL RECRDS OMITTED
			DATA RECRD IS SORTED-PRINT-RECORD.
			O1 SORTED-PRINT-RECORD.
			02 CARRIAGE-CONTROL-CHARACTER PICTURE X.
			02 KEY-PHASE2 PICTURE X(49).
			02 FILLER PICTURE XX.
			02 COBBL-LINE PICTURE X(80).

PROGRAM		NAME	PAGE 3 OF
ROUTINE		DATE	IDENT
SEQUENCE NUMBER	A	B	STATEMENTS
			10 20 30 40 50 60 70 80 90
			SD SORTING-FILE
			DATA RECRD IS SORTING-RECORD.
			O1 SORTING-RECORD.
			02 CCC PICTURE X.
			02 KEY-PHASE3 PICTURE X(49).
			02 FILLER PICTURE XX.
			02 COBBL-LINE PICTURE X(80).
			WORKING-STORAGE SECTION.
			77 I PICTURE 9 COMPUTATIONAL-1 VALUE IS ZERO.
			77 J PICTURE 9 COMPUTATIONAL-1 VALUE IS ZERO.
			77 ONE PICTURE 9 COMPUTATIONAL-1 VALUE IS 1.
			77 INITIAL-I PICTURE 9 COMPUTATIONAL-1 VALUE IS 7.
			77 FROM-INDEX PICTURE 9 COMPUTATIONAL-1 VALUE IS ZERO.
			77 TO-INDEX PICTURE 9 COMPUTATIONAL-1 VALUE IS ZERO.
			77 CHAR-OPTION PICTURE X.

PROGRAM		NAME	PAGE 1 OF
ROUTINE		DATE	IDENT
SEQUENCE NUMBER	A	B	STATEMENTS
			10 20 30 40 50 60 70 80 90
			DATA DIVISION.
			FILE SECTION.
			FD CARD-INPUT-FILE
			LABEL RECRDS OMITTED
			RECRD CONTAINS 80 CHARACTERS
			BLCK CONTAINS 1 RECRD
			DATA RECRD IS CARD-INPUT-RECRD.
			O1 CARD-INPUT-RECRD.
			02 STRING-BF-CHARACTERS.
			03 CHAR OCCURS 80 TIMES PICTURE IS X.
			FD OUTPUT-REPORT
			BLCK CONTAINS 1 RECRD
			RECRD CONTAINS 132 CHARACTERS
			LABEL RECRDS OMITTED
			DATA RECRD IS PRINT-LINE.
			O1 PRINT-LINE.
			02 CCC-BF-PRINT-LINE PICTURE X.
			02 FILLER PICTURE X(131).

PROGRAM		NAME	PAGE 4 OF
ROUTINE		DATE	IDENT
SEQUENCE NUMBER	A	B	STATEMENTS
			10 20 30 40 50 60 70 80 90
			PROCEDURE DIVISION.
			PROGRAM-INITIALIZATION.
			OPEN INPUT CARD-INPUT-FILE.
			OPEN OUTPUT GENERATED-PRINT-FILE.
			MOVE SPACES TO GAP.
			READ CARD-INPUT-FILE
			AT END GO TO END-OF-INPUT.
			IF CHAR (8) IS NOT EQUAL TO 'I' GO TO ASSUME-FORTRAN.
			IF CHAR (9) IS NOT EQUAL TO 'D' GO TO ASSUME-FORTRAN.
			IF CHAR (10) IS NOT EQUAL TO 'E' GO TO ASSUME-FORTRAN.
			IF CHAR (11) IS NOT EQUAL TO 'N' GO TO ASSUME-FORTRAN.
			IF CHAR (12) IS NOT EQUAL TO 'T' GO TO ASSUME-FORTRAN.
			ASSUME-COBBL-INPUT.
			MOVE SPACE TO CHAR-OPTION.
			GO TO PROCESS-FIRST-CARD.
			ASSUME-FORTRAN.
			MOVE '-' TO CHAR-OPTION.
			MOVE 0 TO INITIAL-I.
			GO TO PROCESS-FIRST-CARD.
			READ-SOURCE-PRPG-STATMT.
			READ CARD-INPUT-FILE
			AT END GO TO END-OF-INPUT.

DATA PROCESSING TEXT BOOKS

Introduction To Computer Programming IBM System /360 Assembler Language

AT LAST! A simplified, yet comprehensive textbook on Assembler Language programming with emphasis on the commercial instruction set using DOS. Contents includes System/360 hardware and software, flow-charting and documentation, DTF's, input/output operations, comparing, addition, subtraction, multiplication, division, work areas, register usage, hundreds of illustrations - numerous sample programs carefully explained to illustrate assembler language programming concepts and techniques.

Only - \$7.95

IBM System/360 Assembler Language Problem Text

A workbook type problem manual designed to supplement the textbook INTRODUCTION TO COMPUTER PROGRAMMING IBM SYSTEM/360 ASSEMBLER LANGUAGE. Emphasis is placed upon understanding machine language instruction formats, reading hexadecimal core dumps, and program debugging. Actual print-outs of over 25 assembler programs for realistic practice in assembler language programming. - \$4.95

By: Thomas I. Cashman and Gary B. Shelly

Introductory & Advanced Textbooks For System/360 RPG Programming

By: Dennis A. Fletcher and Thomas J. Cashman

NOW AVAILABLE: The first student textbooks written on this rapidly expanding programming language. All exercises, problems review questions, case studies and forms needed to learn RPG PROGRAMMING are included. Ideal for classroom use, in-plant training or home study.

Volume I Introduction - \$6.95. Volume II Advanced Concepts - \$3.95.

Review Manual for Certificate in Data Processing

1970-Revised Edition By: Thomas J. Cashman C.D.P.

ACCLAIMED throughout the country as the best single reference in preparing for the CDP EXAMINATION, INVALUABLE to persons employed in or associated with the field of Data Processing. The 1970 Revised Edition contains over 450 pages of Valuable information.

Only - \$8.95

ANAHEIM PUBLISHING COMPANY

Specialist in Data Processing Textbooks

ANAHEIM PUBLISHING CO. 131 W. Broadway, Anaheim, California 92805

Please send the Data Processing Books listed. If I am not completely satisfied with my purchase I will return the books within 10 days for refund or cancellation of all charges.

BILL ME CHECK ENCLOSED

- | | |
|----------|-------------|
| 1. _____ | Price _____ |
| 2. _____ | Price _____ |
| 3. _____ | Price _____ |
| 4. _____ | Price _____ |
- Plus Postage. - Save include check with order and we will pay postage.

NAME _____ TITLE _____
 COMPANY or SCHOOL _____
 ADDRESS _____
 CITY _____ STATE _____ ZIP _____

For more information, circle No. 3 on the Reader Service Card

COBOL CODING FORM		CONTROL DATA CORPORATION	
PROGRAM: _____	NAME: _____	PAGE: 5	OF: _____
ROUTINE: _____	DATE: _____	IDENT: _____	
SEQUENCE NUMBER	A	B	STATEMENTS
1			PROCESS-FIRST-CARD. MOVE CARD-INPUT-RECORD TO COBOL-LINE. MOVE INITIAL-I TO I. IF INITIAL-I IS EQUAL TO 0, MOVE SPACE TO CHAR (6). COMPUTE J = I + 1.
2			SCAN-1. IF J IS EQUAL TO 73, GO TO READ-SOURCE-PRG-STATMT. IF I IS EQUAL TO INITIAL-I GO TO SCAN-2. IF CHAR (I) IS EQUAL TO ' ' GO TO SCAN-2. IF CHAR (I) IS EQUAL TO '0' GO TO SCAN-2. IF CHAR (I) IS EQUAL TO '1' GO TO SCAN-2. IF CHAR (I) IS EQUAL TO '2' GO TO SCAN-2. IF CHAR (I) IS EQUAL TO '3' GO TO SCAN-2. IF CHAR (I) IS EQUAL TO '4' GO TO SCAN-2. IF CHAR (I) IS EQUAL TO '5' GO TO SCAN-2. IF CHAR (I) IS EQUAL TO '6' GO TO SCAN-2. IF CHAR (I) IS EQUAL TO '*' GO TO SCAN-2. IF CHAR (I) IS EQUAL TO '+' GO TO SCAN-2. IF CHAR (I) IS EQUAL TO CHAR-OPTION, GO TO SCAN-2.
3			RETURN-POINT. ADD ONE TO I. ADD ONE TO J. GO TO SCAN-1.

COBOL CODING FORM		CONTROL DATA CORPORATION	
PROGRAM: _____	NAME: _____	PAGE: 6	OF: _____
ROUTINE: _____	DATE: _____	IDENT: _____	
SEQUENCE NUMBER	A	B	STATEMENTS
1			SCAN-2. IF CHAR (J) IS EQUAL TO ' ' GO TO RETURN-POINT. IF CHAR (J) IS EQUAL TO '0' GO TO RETURN-POINT. IF CHAR (J) IS EQUAL TO '1' GO TO RETURN-POINT. IF CHAR (J) IS EQUAL TO '2' GO TO RETURN-POINT. IF CHAR (J) IS EQUAL TO '3' GO TO RETURN-POINT. IF CHAR (J) IS EQUAL TO '4' GO TO RETURN-POINT. IF CHAR (J) IS EQUAL TO '5' GO TO RETURN-POINT. IF CHAR (J) IS EQUAL TO '6' GO TO RETURN-POINT. IF CHAR (J) IS EQUAL TO '*' GO TO RETURN-POINT. IF CHAR (J) IS EQUAL TO '+' GO TO RETURN-POINT. IF CHAR (J) IS EQUAL TO CHAR-OPTION, GO TO RETURN-POINT. MOVE J TO FROM-INDEX. MOVE ONE TO TO-INDEX. MOVE SPACES TO KEY-PHASE.
2			BUILD-KEY-PHASE. IF FROM-INDEX IS EQUAL TO 73, GO TO WRITE-OUTPUT. IF TO-INDEX IS EQUAL TO 50, GO TO WRITE-OUTPUT. MOVE CHAR (FROM-INDEX) TO CHAR2 (TO-INDEX). ADD ONE TO FROM-INDEX. ADD ONE TO TO-INDEX. GO TO BUILD-KEY-PHASE.

COBOL CODING FORM		CONTROL DATA CORPORATION	
PROGRAM: _____	NAME: _____	PAGE: 7	OF: _____
ROUTINE: _____	DATE: _____	IDENT: _____	
SEQUENCE NUMBER	A	B	STATEMENTS
1			WRITE-OUTPUT. WRITE GENERATED-PRINT-LINE. GO TO RETURN-POINT. END-BF-INPUT. CLOSE CARD-INPUT-FILE. CLOSE GENERATED-PRINT-FILE. SORTING-BF-PRINT-LINES. SORT SORTING-FILE ON ASCENDING KEY KEY-PHASE3 OF SORTING-RECORD USING GENERATED-PRINT-FILE GIVING SORTED-PRINT-FILE. OPEN INPUT SORTED-PRINT-FILE. CLOSE SORTED-PRINT-FILE. OPEN INPUT SORTED-PRINT-FILE. OPEN OUTPUT BUTUP-REPORT. PRINT-BUT-SORTED-INDEX. READ SORTED-PRINT-FILE AT END GO TO END-BF-PRINTING. MOVE SPACE TO CARRIAGE-CONTROL-CHARACTER. WRITE PRINT-LINE FROM SORTED-PRINT-RECORD. GO TO PRINT-BUT-SORTED-INDEX. END-BF-PRINTING. CLOSE SORTED-PRINT-FILE. CLOSE BUTUP-REPORT.
2			STOP RUN.

CONFERENCE COUNTDOWN

JANUARY, 1970

- 12-16 Data Transmission Facilities exhibition, London, England. Contact: U.S. Dept. of Commerce (BIC-942), Washington, D.C.
- 14-16 1970 International Conference on System Sciences (IEEE), Honolulu, Hawaii. Contact: Dr. Richard Jones, 2565 The Mall, University of Hawaii, Honolulu, Hawaii 96822.
- 19-21 Computer Software and Peripherals Show and Conference, Eastern Region, New York, N.Y. Contact: Show World, Inc., 37 West 39th St., New York, N.Y. 10018.

FEBRUARY

- 10-11 The National Security Industrial Association Conference on "The Application of Computers to Training," Washington, D. C. Contact: Paul Newman, Headquarters NSIA, Department ACT, Suite 700, Union Trust Building, 740 15th Street, N.W., Washington, D. C. 20005.
- 16-19 Annual Computer-Aided Circuit Analysis and Design Institute, Tampa, Fla. Contact: Dr. George Zobrist, Department of Electrical Engineering, University of South Florida, Tampa, Fla. 33620.
- 17-19 Computer Software and Peripherals Show and Conference, Midwestern Region, Chicago, Ill. Contact: Show World, Inc. 37 West 39th St., New York, N. Y. 10018.
- 19-20 ADAPSO's 28th Management Conference, Los Angeles, Calif. Contact: ADAPSO, 551 Fifth Avenue, New York, N. Y. 10017.
- 23-25 Data Processing Supplies Association, Winter General Meeting, New Orleans, La. Contact: DPSA, 1116 Summer St., P.O. Box 1333, Stamford, Conn. 06904.
- 27-28 National Association of Computer Assisted Analysts (NACAA) Multiposium, Los Angeles, Calif. Contact: NACAA, Multiposium, Mary Bragg, P.O. Box 2802, Fullerton, Calif. 92633.

MARCH

- 23-25 INFO-EXPO-70, Washington, D.C. Contact: Paul Zurkowski, Information Industry Association, 1025 15th St. N.W., Washington, D.C. 20005.
- 23-26 IEEE International Convention and Exhibition, New York, N.Y. Contact: IEEE, 345 E. 47th St., New York, N.Y. 10017.
- 25 QUEST—Symposium Exposition of Time-Sharing Systems & Techniques, Los Angeles, Calif. Contact: Merrill Goulding, 4612 W. Jefferson, Los Angeles, Calif. 90016.

APRIL

- 3 Computer Graphic Workshop, Association for Computer Machinery, Rosslyn, Va. Contact: Spec. Int. Group for Graphics, Box 933, Blair Station, Silver Spring, Md. 20910.
- 7- 9 Computer Software and Peripherals Show and Conference, Western Region, Los Angeles, Calif. Contact: Show World, Inc., 37 West 39th St., New York, N.Y. 10018.

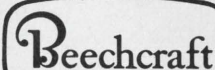
SENIOR SYSTEMS MANAGEMENT SPECIALIST

Outstanding opportunity for individual experienced in developing computer techniques to resolve problems relating to inventory, scheduling, equipment utilization, transportation and manufacturing. Experience should include smoothing, forecasting, planning and operations research utilizing IBM 360 system. Must have ability to make oral and written presentations to management.

Send your resume
with salary requirements to:

Sam Zuercher
9709 East Central, Wichita, Kansas 67201

BEECH AIRCRAFT CORPORATION
"An Equal Opportunity Employer"



CAREER MEMO

To the Computer Professional

Does your present position lack pride of accomplishment? . . . If so, it is time for a change. Professional Opportunities presently exist in:

SOFTWARE DEVELOPMENT
SYSTEMS DESIGN
PROGRAMMING
REAL TIME SYSTEMS
TIME SHARING
MANA. INFO SYSTEMS
ENGINEERING
MATHEMATICS
OPERATIONS RESEARCH

Your confidential inquiry is welcome.
Call or write, Robert L. Keilholtz or
Donald Wayne,

EVERETT KELLEY ASSOCIATES, INC.
Suite 1300—121 S. Broad St.
Philadelphia, Pa. 19107
215—KI 6-5240

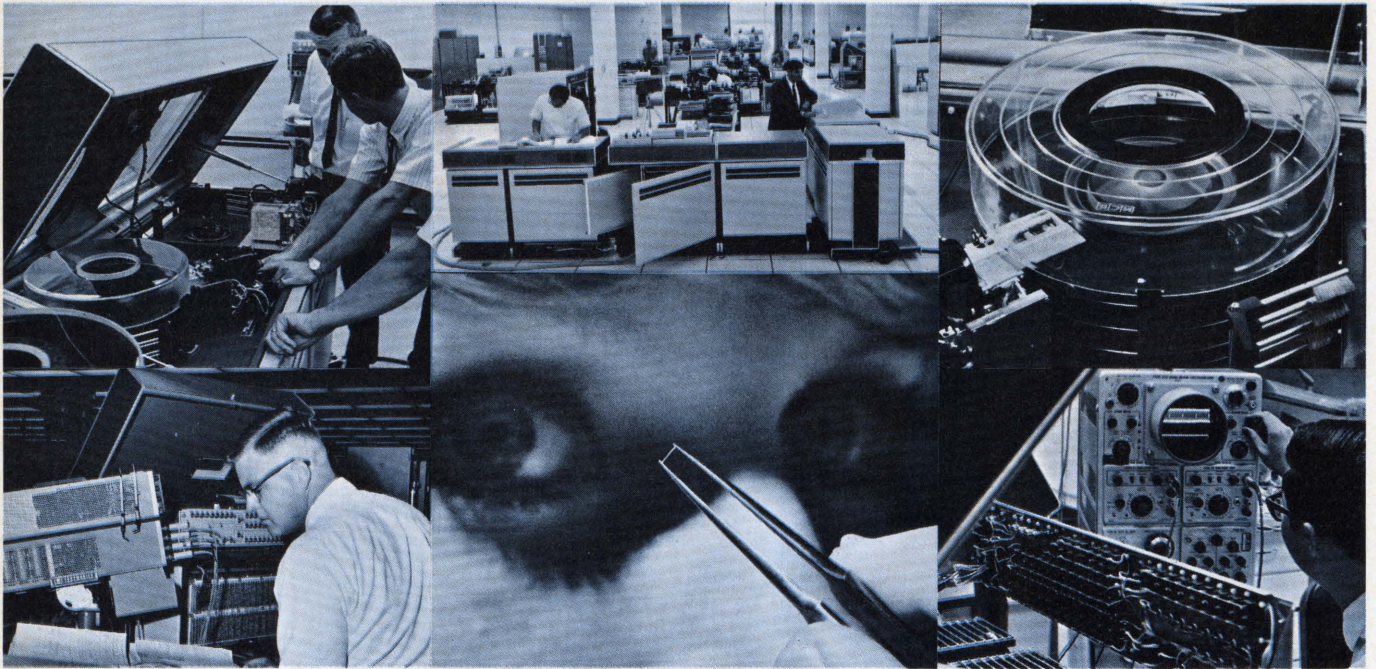
Placement of Computer Professionals
since BINAC.



NCR, Los Angeles, is the largest, fastest-moving commercial computer manufacturing facility in Southern California and one of the most advanced in the world. Here, you can share new fourth-generation challenges with men who have already placed some of the world's most advanced digital systems hardware and software on the market

NOT SOMEDAY NOW

—people who have pioneered high-speed thin-film technology, advanced disc memories, monolithic integrated circuitry and automatic production techniques. NCR means business in 121 countries. The NCR Electronics Division can mean a non-stop, non-defense, no-limit future for you today.



MAGNETIC HEAD DESIGN ENGINEERS

To design and develop flying magnetic recording heads and the required prototype tooling. Positions require BS or MS in EE, ME or physics plus three years of applicable experience. Knowledge of ferrite machining technology and ferrite heads desirable.

ADVANCED DEVELOPMENT ENGINEERS

Positions available for senior MECHANICAL and ELECTRONIC engineers with strong experience in high-speed mechanisms and mechanical, hydraulic and electromechanical systems.

LOGIC DESIGN ENGINEERS

Senior-level positions in logic design for persons with knowledge in MSI and LSI circuitry for fourth-generation computer systems. Also positions in manufacturing engineering for digital test equipment design. Positions require BSME/BSEE and five years' related experience.

CIRCUIT DESIGN ENGINEERS

For design and development of LSI circuitry arrays, including detailed circuit design and extending through integrated fabrication. Will also evaluate LSI packaging con-

BROAD-HORIZON, PRESENT-TENSE, NON-DEFENSE, NON-STOP ENGINEERING AND PROGRAMMING OPPORTUNITIES AT NCR, LOS ANGELES

cepts and interface with semiconductor vendors. Prefer BSEE and several years of related experience.

SYSTEMS ANALYST ENGINEERS

Junior and senior level positions available for ENGINEERS, ANALYSTS and PROGRAMMERS who have several years' experience in any of the following areas:

Systems analysis and evaluation of business systems. Selected applicants will determine and participate in the establishment of either small processor systems or a large multi-processing system.

Study and development of on-line systems in business data communication environment.

Evaluation of multi-programming, multi-processor time sharing systems using simulation techniques.

SOFTWARE PROGRAMMERS

To design, code, de-bug and document operating systems software or on-line executive software modules. Prefer degree in business or a science discipline and/or experience in systems programming.

DIAGNOSTIC PROGRAMMERS

Positions involve the writing of diagnostic programs for checkout, acceptance test, file maintenance of EDP systems. Requires previous programming experience.

NOW INTERVIEWING

Interviews are now being held for these positions, all of which are currently open. To schedule an appointment in your area or at the IEEE International Convention in New York City, March 21-24, send resume, including salary history, to Steve Williams at the Electronics Division.



The National Cash Register Company
ELECTRONICS DIVISION
2873 West El Segundo Boulevard,
Hawthorne, California 90250
An equal-opportunity employer

NEW PRODUCTS

Memory Raster Displays

Applied Digital Data Systems, Inc., Hauppauge, New York, has announced a new series of readout devices that permit ordinary TV monitors to display computer generated or sequential data. The Memory Raster Displays (MRD) are devices that will accept data from a computer, a keyboard, magnetic tape, or any other sequential source and display the data on an ordinary 525-line TV Monitor at remote locations which are linked to the source by a single coaxial cable.

All model MRDS accept serial data, character by character, store the data in their refresh memories, convert it into a composite video signal, and display it on ordinary TV monitors. During operation, the MRD'S sequentially insert each character into a dynamic shift register memory location corresponding to the next available character position on the screen.

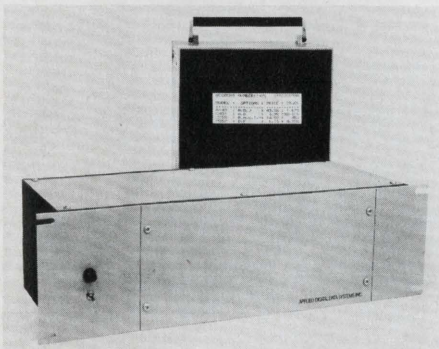
The MRD-100 displays BCD numeric data on TV Monitors in 2, 4, or 8 lines with 32 characters per line; or in 4 or 8 lines with 16 characters per line.

The MRD-200 displays ASC11 alphanumeric data in from 32 to 1024 character positions in 1, 2, 4, 8 or 16 lines with either 32 or 64 character per line.

The MRD-500 can be read from as well as written into. It also has random access capability and is thus ideal for custom-designed display systems.

Controls on the MRD-100 and MRD-200 include the ability to select a display line, and to advance to the character position where the next character will be entered. Optional features include: a control for blinking any character or characters on the screen; a cursor symbol for tracking the location of the next character to be entered; and an erase command for erasing all or part of the screen.

For more information, circle No. 20 on the Reader Service Card



Telecommunication Information Management Executive

Shaw Systems Associates Inc., of Houston, Texas, has developed a generalized communication system of modular design, called TIME (Telecommunication Information Management Executive). The modularity of design and flexibility of adaptation of the system is said to allow the user to economically and quickly keep abreast of management's increasing requirements. TIME can start out as a system for simple inquiry to and can gradually be expanded until it becomes a comprehensive management information system.

Modularity of TIME is accomplished through several major system design criteria, including:

File Independence—the Number and organization technique of the files supported by TIME is a user specified variable.

Terminal Device Independence—Any teleprocessing unit supported by IBM BTAM (7770, 2260, 1050, 2780, etc.) may be supported by the TIME system in one partition.

Application independence—Application modules can be written in high or low level languages. They may be added by the user as the need arises.

Standard IOCS—No specialized IOCS modules are a part of the system. All input/output functions are accomplished at the get/put or read/write level.

The TIME system is compatible with both IBM DOS/360 and OS/360. Processing modules may be either transient or core resident as desired. Memory requirements vary with the number and type of terminals, the number and type of application files being accessed and the nature of actual processing taking place. The system has been implemented on an IBM system 360 with multiple terminal devices and applications in less than 32 K of memory.

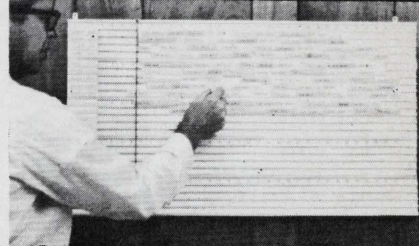
For more information, circle No. 21 on the Reader Service Card

Generalized Read and Simulate Program

Control Data, Minneapolis, Minn. has announced two new software packages for use with its 915 Page Reader Systems. GRASP (Generalized Read and Simulate Program) is said to give OCR users higher throughput capabilities that are somewhat faster and more efficient than similarly designed programs. GRASP was designed to read documents, validate and format the input data contained on the documents, and write the output on magnetic tape at maximum throughput rates. It

VISU-TROL SOLVES SCHEDULING PROBLEMS

- Permits Easy Schedule Changes
- Shows Available Open Time Slots
- Expands Horizontally and/or Vertically with Additional Units



SEE AT-A-GLANCE

VISU-TROL™ SHOWS SCHEDULE OF:

- COMPUTER TIME • MANPOWER
- MACHINE LOAD • BUDGETS
- TRAINING SCHEDULES
- JOB ORDERS
- MATERIALS



\$4949

COMPLETE

including basic supplies

FREE: Complete System Brochure-Write Dept.SA-1

W

(203) - 227-4111

WASSELL ORGANIZATION, INC.

25 Sylvan Road South, Westport, Conn. 06880

Wassell Systems Canada Ltd., Toronto

For more information, circle No. 7 on the Reader Service Card

FOCUS YOUR EYE ON THE ONLY BOOKLET WHICH TELLS HOW YOU COMPARE WITH YOUR CONTEMPORARIES



The Callahan Center, with offices in Philadelphia and California, has accumulated many facts over the past four years in placing computer professionals all over the country and overseas. We would like to share them with you.

Now you can determine exactly how you compare with your contemporaries. This FREE 1970 edition lists typical backgrounds of professionals in the EDP field. This includes their year of graduation, a description of their experience, (including Machines, Languages and Applications), their present salary and bona fide offers.

Find out where you stand. Write for this free booklet now.

FREE



All of our services are employer paid.

Callahan
CENTER FOR COMPUTER PROFESSIONALS

1819 John F. Kennedy Blvd.
Phila., Pa. 19103 • 215-561-1950

Western Office: Del Almo Financial Center
Torrance, Calif. • 213-371-4659

For more information, circle No. 6 on the Reader Service Card

uses a series of typed parameters to recognize the documents read by the 915 Page Reader, which define the physical document format, control characters and output format.

The second software package, Keypunch Simulator Program, obtains data from pages typed in the standard font of the American National Standards Institute (ANSI) and converts the data into

punched card images that are recorded on magnetic tape. The Keypunch Simulator Program is capable of verifying and justifying the typed input data, filling in blanks in the data and providing for the duplication of character positions from a previous record.

For more information, circle No. 22
on the Reader Service Card

CASPER

A new conversion system, CASPER, has been developed by Computer Advisory Services, Inc., Los Angeles, Calif., a software subsidiary of Columbia Picture Industries. CASPER is a software package which will translate IBM 1400 programs to COBOL, on a large time-sharing computer. CASPER is on a time-sharing system to permit more thorough logic evaluation, translation and checkout than previously achieved by batch processing methods. The pricing schedule depends on the volume of work and on the degree of completion required by the customer. One hundred percent conversion on small orders will be handled for 59¢ per IBM 1400 Autocoder or SPS source statement, where the client assumes responsibility for file conversions, system integration and final checkout.

For more information, circle No. 23
on the Reader Service Card

VICOM

Software Methods, Inc., New York, N. Y. has recently developed a general purpose on-line file management system, VICOM, which was designed to be used by personnel with limited or no prior data processing experience. The minimum configuration for the VICOM system is 32,000 bytes main memory, 3 magnetic tapes and 1 disk. VICOM's capabilities include: file generation, file maintenance, data retrieval and report generation.

The VICOM system can be used for the application of statistical methods, the analysis of historical data, and to fulfill the requirements of an automated set of tools for research, analysis, forecasting and planning.

A security system is also provided to restrict user access to the data files. The mechanism for modifying the security imposed upon the file is also considered a non-programmer language which, like the entire system, may be called for execution by a terminal CRT or off-line device attached to the system. Through the implementation of efficient, non-programming tools, the VICOM System is readily available to the user for the modification of data, modification of data characteristics and for its meaningful output presentation.

For more information, circle No. 24
on the Reader Service Card

New Command Language

PDA Systems, Inc., River Vale, New Jersey, has a new command Language, BAL-FIX, which was designed to enable programmers to perform interactive debugging of BAL programs on any IBM 360 computer.

With BAL-FIX the programmer can interrupt the execution of his program at predetermined locations and selectively display the contents of registers, control

words, and core locations. On the basis of this analysis, he can continue execution to the next program interrupt point and modify the contents of any register control word or core location, or he can program additional interruptions.

Facility with BAL-FIX is quickly and easily achieved via extensive, built-in, interactive features. For example, each BAL-FIX command has a range of error messages associated with it and the appropriate message is typed out on the console whenever a syntax error is made in a command, or when an unrecognizable command is entered.

BAL-FIX is completely compatible with the DOS supervisor. The package comes as a card deck ready to be loaded into the system library. Only one additional card is required at the beginning of the deck for a problem program. This card includes the parameters which allow the pre-setting of up to 10 program interrupts at any desired locations in the program.

For more information, circle No. 25
on the Reader Service Card

Magnetic Tape Unit

Stromberg DatagraphiX, Inc., a subsidiary of General Dynamics, San Diego, Calif., has a new Magnetic Tape Unit on the market. The new tape unit, the F512, enables the DatagraphiX 4360 Micromation Recorder to accept 9-channel 1600 bpi phase-encoded magnetic tape input in addition to 9-channel 800 bpi and 7-channel 800 and 556 bpi NRZI-encoded tape.

When the F512 is integrated with the DatagraphiX 4360, the recorder translates the output from a digital computer to alphanumerics at 30,000 characters a second and displays them on a CHARACTRON[™] shaped Beam Tube. The readable text, in page format is then photographed onto film at the rate of 7,000 lines a minute.

For more information, circle No. 26
on the Reader Service Card



Management Service System

Webster Computer Corporation, Danbury, Conn. has announced Measurement Service System (MSS) a computer software system designed to help computer users gain greater throughput from IBM System/360 computers. The system will operate on any IBM System/360 computer using DOS.

MSS allows a user to account for the instruction execution time for each program running in each partition of memory. MSS records the Start, Stop, Wait, Super-

programmers • analysts

GROW

NATIONWIDE POSITIONS
FROM \$7,000 TO \$25,000
ALL FEE PAID

- SOFTWARE DEVELOPMENT
- SCIENTIFIC PROGRAMMING
- REAL TIME SYSTEMS
- BUSINESS SYSTEMS
- COMMERCIAL PROGRAMMING
- MANAGEMENT INFO SYSTEMS

Send resume, in confidence, with present salary and geographic preference.

FREE: CAREER OPPORTUNITIES BULLETIN

For a complete listing of outstanding positions with national companies circle subscriber reader card using home address only. No obligation.

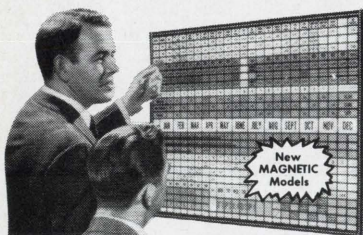
La Salle Associates

DEPT. A

719 N. 25th STREET, PHILA., PA. 19130

For more information, circle No. 8
on the Reader Service Card

GRAPHIC VISUAL CONTROL



You Get Things Done Better And Faster

The BOARDMASTER saves time, cuts costs and prevents errors. You see what is happening. Shows facts at eye level. For Production, Scheduling, Inventory, Sales, Traffic, Etc.

Simple to operate. Write on cards, post on board. Fully flexible. Million in use. Price \$49.50 with cards.

FREE 24 Page BOOKLET No. B-86
Mailed Without Obligation

GRAPHIC SYSTEMS, Box 398, Yanceyville, N.C. 27379

For more information, circle No. 9
on the Reader Service Card

visor, and Problem Partition 7 times for each program run through the computer. MSS also indicates Idle time by partition, Abnormal Termination codes, Test or Production run indications and several other types of relevant data.

MSS does not disrupt the normal data processing operations, alter the logic, nor degrade the execution of the DOS Supervisor. The detail data gathered each day is subsequently analyzed by using a group of special data reduction programs. Then the output from these programs provides valuable information relative to the control of computer operations and configuration analysis. Optimization of scheduling is achieved through use of the output from the automatically created Daily Log.

Following a customer's use of MSS a senior systems analyst of Webster Computer Corporation will analyze and review the results with the customer to aid him in developing improvements in the operation of his installation and gaining programming efficiencies.

For more information, circle No. 27
on the Reader Service Card

Surveying Calculation Software

Call-A-Computer, Minneapolis, Minnesota, has added a 12 program package to the library available to its time-sharing subscribers. The new package is designed to solve standard surveying problems and includes the following programs, as well as six others:

TRAVR\$, which determines the X and Y coordinates for a closed loop traverse through the use of distances and deflection angles. TRAVR\$ also calculates and adjusts for errors in the traverse, calculates the bearings between the points, calculates the area of the traverse, and adds or subtracts arc segments to the traverse.

PTTRV\$, which determines the X and Y coordinates from any number of side shots and calculates the bearing and the length of the line needed to close a partial traverse.

TANDIS\$, which finds the distance and bearing between pairs of coordinate points.

COARE\$ which determines the area bounded by a set of coordinate points and adds or subtracts arc segments from the area.

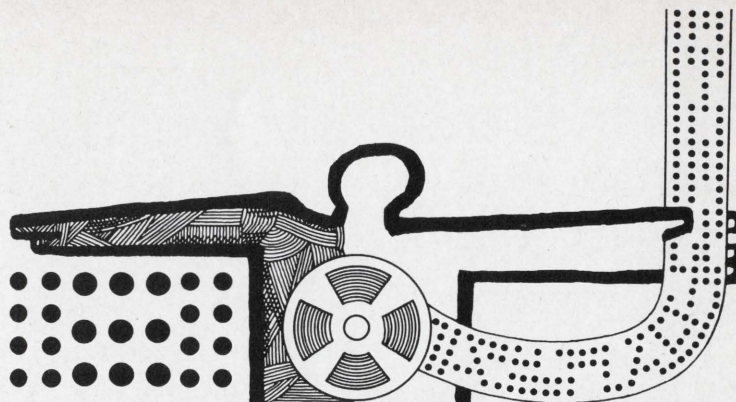
NTSKI\$ which computes the coordinates of an unknown point given the bearings from two known points, and calculates the distance from each of the known points to the unknown point. And NTKS2\$, which computes the coordinates of an unknown point given the bearing from one known point to the unknown point and the distance from another known point to the unknown point. It also calculates the unknown bearing and the unknown distance.

On a time-sharing computer these programs are able to calculate the solutions in less than 10 minutes whereas formerly 3 to 4 hours were required to perform the calculations by hand.

For more information, circle No. 28
on the Reader Service Card

New Graphics Output System

California Computer Products, Inc., Anaheim, Calif., has a new, high speed, high resolution, Graphics Output System, the 900/1670. The off-line COM system can draw at the rate of 500,000 increments/



PROGRAMMERS SYSTEMS AND BUSINESS

Systems programming is in three areas of application: 1) Develop on-line systems for hospital data management. Must have IBM 360/DOS and assembly language background; 2) Perform test data programming on advanced aerospace projects. Must have CDC 6000 experience; 3) Coordinate between programming and manufacturing organizations. Must have A.P.T. systems experience. BS in math or engineering is required for all above positions. Business programming: Develop COBOL programs for hospital business offices. Must have degree and two years' experience.

For further information please write H. W. Bissell, Professional Placement Manager, P. O. Box 504, Sunnyvale, California 94088. An equal opportunity employer.

LOCKHEED
MISSILES & SPACE COMPANY
A GROUP DIVISION OF LOCKHEED AIRCRAFT CORPORATION

Programmers/Analysts...

PUT YOUR TALENTS IN MOTION

Come to Gilbert Lane for specialized data processing placement services. We match ambition with challenge... experience with opportunity. Contact us for information on these, and other career-expanding possibilities.

PROGRAMMER-ANALYSTS—Extensive multi-computer complex. Highly diversified applications: Research/Business. **\$12-15,000.**

PROGRAMMER SR.—Emphasis on Software development/terminal interface for new Data Center. Major Co. **\$14-17,500.**

SYSTEMS-ANALYST—Create Production/Inventory MIS for aggressive, smaller Corp. Report to VP Manufacturing. **\$14-16,500.**

PROGRAMMER JR.—1 year IBM experience + COBOL qualifies to learn systems in small, expanding department. **\$12,000.**

PROGRAMMING MANAGER—Direct Dept. of 12. Long/short range planning. Blue-chip Corp. Desirable suburban location. **\$18-21,000.**

SYSTEMS/PROJECT—Set up, direct Financial systems group. Large-scale IBM experience. Excellent promotion potential. **\$15-17,000.**

All fees and expenses paid by client companies

Send your resume and/or Software Age application in confidence to:

Gilbert Lane Personnel Agencies, Inc.



NEW YORK: 505 Fifth Avenue, N.Y., N.Y.
LAKE SUCCESS: 3000 Marcus Avenue, Lake Success, L.I., N.Y.
CLEVELAND: 140 Public Square, Cleveland, Ohio
PITTSBURGH: 903 North American Rockwell Building, Pittsburgh, Pa.
WASHINGTON, D.C.: 1025 Connecticut Avenue, Washington, D.C.
SAN FRANCISCO: 44 Montgomery St., Wells Fargo Bldg., San Francisco, Calif.
HARTFORD: 750 Main Street, Hartford, Conn.

OFFICES IN OTHER PRINCIPAL CITIES

Programmers— We know where you can find a better job.

Work in the most dynamic EDP Communities in the country where the nation's top companies are hungrily looking for skilled programmers. Like you.

Personal and professional growth is rapid. Salaries are high and the diversification of opportunities is unsurpassed.

We work closely with hundreds of national companies headquartered here who have exciting programming and systems openings. Applications programmers, systems programmers, software programmers—are the people these companies need. Drew has been chosen to supply them with the necessary talent.

Send us your resume or call and we'll give you the inside story on all of these openings.

Do it today. This could be the start of bigger and better things.

DREW

Personnel Placement Center
160 Broadway, New York, New York 10038
Phone (212) 964-8150

333 North Michigan Avenue
Chicago, Illinois 60601
Phone (312) 641-2580

For more information, circle No. 10
on the Reader Service Card

COMPUTER PROFESSIONALS:

**"HOWARD LEVIN IS PROBABLY
THE WORLD'S BEST QUALIFIED*
EDP EMPLOYMENT AGENT"**



*MBA, Personnel management; 5 years industrial personnel experience for a major electronics and computer firm; 5 years hands-on computer programming and systems analysis experience; Director and placement counsellor for RSVP SERVICES since 1966.

His personal services are free and convenient. Why settle for less?

**SERVING
PHILADELPHIA, NEW JERSEY, NEW YORK**
CALL COLLECT: N.J. (609) 667-4488
PHILA. (215) 922-3993

(24 HOUR LIVE ANSWERING SERVICE)

or send resume or rough notes of objective, salary, education, and experience to:

HOWARD LEVIN
Director, Dept. S
RSVP SERVICES
ONE CHERRY HILL MALL (Suite 714)
CHERRY HILL, N.J., 08034



Recruitment, Selection, Vocational Training, Placement for Computer Oriented Companies

sec. and it can print at the rate of 5,000 lines/min. depending upon the size and variation of software generated type fonts. There are several options which are available for the system, including: a form projector with 16 program selectable forms; a high speed character generator which increases the average printing rate by 100%; cameras for 16mm or 35mm sprocketed or unsprocketed microfilm; and a 105mm microfiche camera.

The system is composed of a Model 900 Controller, a stored program device, the Model 937 Magnetic Tape unit, providing up to 30,000 byte/sec. input to the controller, and the Model 1670 microfilm printer/plotter, featuring a programmable raster of 16,384 x 16,384 positions, plot resolution. The system has 30 levels of intensity which are under program control and which allow the system to achieve twenty usable line widths, and lines and dots are produced in the incremental dot writing technique.

For more information, circle No. 29
on the Reader Service Card

Microfilm Printer/Plotter

Graphics System Division of Computer Industries, Inc., has announced a new, versatile Computer Output Microfilm (COM) Printer/Plotter system. It features modular construction and a long list of options that can be purchased when they are needed.

The new system, microfilm Model the 300-3, prints and plots at speeds up to 200 pages a minute. It accepts almost any tape format via a unique patchboard panel and code plug system. It can record on either roll or microfiche formats with a new Multifomat camera that handles 16, 35 or 105 mm films. (There is a variety of other cameras available that can be used without system modification.) The 300-3 has an optional hard copy module that allows for paper and film output to occur simultaneously, and it also has a magnetic tape input capability that handles 7-track (556 or 800 BPI with odd or even parity), and 9-track (800 or 1600 BPI with even parity).

The 300-3 has the standard reread capability and optional retrieval coding. It is provided with forms projection and a special error void capability. Some additional optional features include: frame butting, additional character sets and many special selectors (recorded length, line length, print delay, cod control and frames required. The 300-3 also has an audible error alarm optionally available.

For more information, circle No. 30
on the Reader Service Card

Two New Program Packages from IBM

IBM has announced two new program packages which will extend time-sharing capabilities to a wide range of System 360s.

One package, Time-Sharing Option (TSO) was designed for the users of System/360 Models 50, 65, 75, 85, and 195. It provides for time-sharing concurrent with batch processing and allows terminal users to select from any language supported for the Operating System, including Assembler, FORTRAN, COBOL, ALGOL, PL/I and RPG, as well as ITF BASIC and an interactive subset of PL/I, two new program products. TSO also enables the terminal user to interact with any application program.

The second new package announced by IBM is the Interactive Terminal Facility (ITF) for users of Models 25, 30, 40, 50, 65, 75, 85 and 195. ITF provides two of the conversational programming languages offered under TSO: BASIC and an interactive subset of PL/I. ITF can run under the Disk Operating System on a Model 25 with 49,152 bytes of main storage. For concurrent time-sharing and batch processing under DOS/360, a Model 30 or larger with at least 65,536 bytes is required. Under OS/360, a 131,072 byte main memory is required.

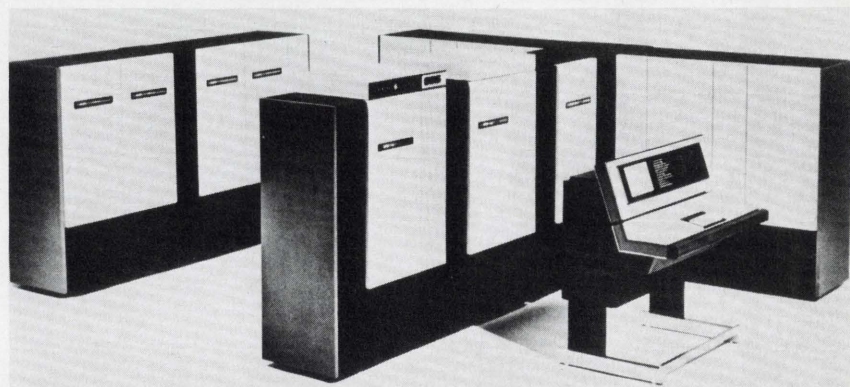
For more information, circle No. 31
on the Reader Service Card

New Computer from GE

General Electric Co., New York, has announced a powerful new computer, the GE-655, in an attempt to capture a bigger portion of the large-scale computer market. The GE-655 is upward compatible with the existing GE-600 line of large-scale information systems. The system is capable of multiprogramming, multiprocessing and executing the 3 dimensions of data processing concurrently—local batch processing, remote batch processing and time-sharing. Some of the features of the 655 include: a memory cycle of one-half a microsecond, 10 new instructions, character handling improvements and a time register with higher resolution to complement the faster internal speed of the machine.

Each GE-655 memory module contains 65,536 words and each controller can handle one or two modules. A system can accommodate up to two controllers for a total capacity of 262,144 words of core memory.

For more information, circle No. 32
on the Reader Service Card



New System from RCA

RCA Information Systems, New York, has announced a new time-shared information storage and retrieval system, which is said to allow more than 100 data processing users at different locations to concurrently use the full resources of the Spectra 70/61 remote computing system.

The new system, User Language/1 (UL/1) is a generalized Data Base Management System which processes requests from many on-line users simultaneously. The functions that can be performed by the system include: file creation and updating; file structure revision; on-line inquiry response; interactive browsing; and the on-line initiation of more complex operations.

The system provides user-oriented facilities for non-programmers and at the same time more experienced users have access to the abilities to handle more advanced applications. UL/1 has two report generators, one which permits a high degree of layout and format flexibility to meet users' need and the other which minimizes user action to produce the required output.

The system uses normal English language and arithmetic notation in an attempt to simplify typical requirements for input and output data base manipulations.

The system can be used interactively, from remote teletypes and video date terminals, and also from a remote high speed batch data terminal and from local card readers for handling batch processing.

For more information, circle No. 33
on the Reader Service Card

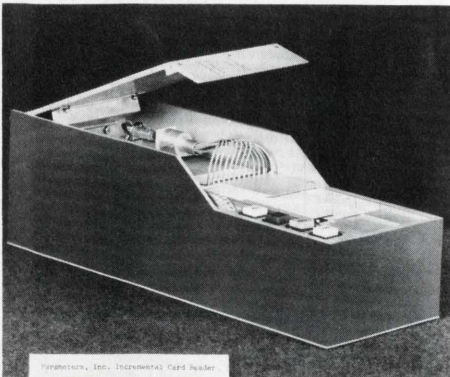
Incremental Card Reader

Parameters, Inc., a subsidiary of Global Industries, Inc., Belleville, New Jersey, has developed an incremental card reader that programs test equipment, chemical processes, food processes, batching machinery and mini-computers.

The DS-80 is complete and self-contained with interface, modular circuitry, and performance features that are compatible with most computers and data systems. On command, the DS-80 reads Hollerith coded data, a column at a time, up to speeds of 80 columns a second.

The DS-80 features: a single-step function with return to start from any column; an automatic feed and return; sync/output with read control; and 3 speed which are determined by application. All of the control functions are programmable from remote locations.

The DS-80 works by reading the card opto-electronically. In this process a phototransistor array senses light through



the punched holes in the card. For maximum reliability during this process the light is channeled to each row through individual fiber optics from a common source.

For more information, circle No. 34
on the Reader Service Card

Optical Bar Code Reader

A Medical Folder is an item which contains patient medical information and is identified by a unique number. There is a Medical Information system that controls the folder's whereabouts and completion status. In order for the system to work it is necessary to accurately identify the folder at certain checkpoints within the working environment, and then reliably route the information to a central control.

Cambridge Information Systems, Inc., Cambridge, Mass., has developed a low-cost Optical Bar Code Reader (OR) to work in conjunction with the Automated Medical Record Locator System, a medical information system. The OR is used as a direct input device to automatically identify the medical folder and transmit the information to a digital computer. OR's can be placed at various strategic locations. Then, when a Medical Folder is passed over an OR in the network the computer is notified of the folder number and its whereabouts. Although the OR was designed to be used as an input terminal in an On-Line system it can also function off-line driving a paper tape punch.

The Optical Bar Code Reader contains mechanical, optical and electronic components. The folder is mechanically guided over an optical reading unit by a conveyor-like device which maintains code pattern alignment. The optical units are an adaptation of a commercial shaft encoder and the electronic portion of the decoder is a simple, compact unit which feeds the four-track (4 bit) code to relays suitable for interfacing with a telephone teletype modem.

For more information, circle No. 35
on the Reader Service Card

New Interactive Management Information System

A new interactive Management Information System has been announced by Meta-Language Products, Inc., New York, N. Y. The new system is MUSE_{tm} (Ma-

chine-User Symbiotic Environment) and it has been specifically designed for creative decision-making and the solving of non-routine problems by management and corporate planners who are not skilled in ways to communicate with a computer.

The 3 main features of the system: 1) a natural English language; 2) a simple data loading/updating procedure; and 3) an automatic report generator; provide the users the way to communicate for interaction with and processing form a large common data base. All the user has to do is ask questions, give commands, or develop applications dialogues in an unstructured natural manner. The System provides interactive error detection, full line-editing and a system-maintained dictionary with definitions, to aid the user in developing dialogues.

Upon installation the system contains 250 basic dictionary entries. To this the user adds words of his own terminology—from 3,000 to 25,000 words, depending on the machine—through data loading and idiomatic equivalences.

MUSE_{tm} has been implemented on the XDS-940 and conversion to other computers, including the CDC 3300, PDP-10 and GE-635, will begin in February. Other machines that are being studied for MUSE implementation include the XDS-Sigma 7, RCA Spectra 70/46 and the UNIVAC 1108.

For more information, circle No. 36
on the Reader Service Card

New Plotting Software from Houston Instrument

Houston Instrument, a Division of Bausch & Lomb has added plotting software to its line of computer applications. TRIDEM_{tm} a three-dimensional software package, offers wide versatility in plotting a gridded array in three-dimensional space. Some of the features of the software package include the representation of stereo pairs, full hidden line capabilities and exact approximation of curvilinear. TRIDEM_{tm} was written in basic FORTRAN IV and requires only 3500 words of core. It can be installed on almost any computer system. When the system is installed the user communicates with it by supplying parameters to the six basic FORTRAN subroutine entry points within the system.

For more information, circle No. 37
on the Reader Service Card



EDP-SYSTEMS

WE SPECIALIZE IN CAREER CORRECTION

ARE YOU "UNDERED"?

UNDER . . . PAID or UNDER THE WRONG BOSS . . . UNDER THE
WRONG CLIMATE or UNDER PROMOTED
UNDER UTILIZED or UNDER THE WRONG HOURS . . . UNDER THE
WRONG POLICIES . . . or just "UNDERED"?
FOR "OVERING" . . . CALL (215) 839-1500

LAWRENCE PERSONNEL

29 Bala Avenue, Bala Cynwyd, Penna. 19004
(Philadelphia's Main Line Suburb)

FEE PAID BY CLIENT COMPANIES • NO CONTRACTS • ALWAYS CONFIDENTIAL

Data Processing Systems Consultant

Exceptional opportunity with one of the fastest growing major industrial corporations. This position is in our Corporate Planning & Development group located at headquarters in New York City. Assignments cover all phases of EDP management from data processing feasibility studies through the design of sophisticated management information systems. The successful candidate must have:

- A record of achievement in data processing, as a line manager or as a professional staff consultant.
- Application experience in cost accounting, general accounting, inventory management and manufacturing control systems.
- Familiarity with third generation computers.
- BS or BA degree required, advanced degree desirable.
- Must be willing to travel up to 25%.

PROGRAMME
Programmers who are looking for more career and office and the same program can find a fascinating future in the more advanced, a major national and international consulting firm. You will be the first on the job and the first to master. Other duties include developing and maintaining systems and experience on the 300/30.

your future on the move!
We offer you an excellent salary and a full range of fringe benefits. Start now by sending your resume to:

Mr. John F. Spear
H. B. MAYNARD AND COMPANY, INC.
290 Avenue B, Pittsburgh, Pa. 15221

THE NEW YORK TIMES, SUNDAY, NOV 14, 1970

PROGRAMMER/ANALYSTS to \$15,000—WITH ROOM TO GROW!!

ASSEMBLY LANGUAGE OS, DOS If you've got a year behind you here's the chance to get a top systems development group.

COBOL 2 years of experience will enable you to find in design and development of advanced Financial and Distribution systems.

PL-1 Research and control projects in the works require imaginative programmers with at least 2 years of solid experience.

IS JCL GENERATION SPECIALISTS A year of solid experience will open the door to a challenging personal design and system generation work.

Please send your resume in complete confidence to:

Los Angeles openings for SENIOR OPERATIONS ANALYSTS

WEAPONS SYSTEMS ANALYSTS

Tests for inventory control, production control and maintenance. Minimum requirement of 5 functional areas or manufacturing supervision required. Experience in use of EDP desirable. Positions report to corporate director of management information systems. These positions require up to 50% travel, and offer excellent opportunity for advancement.

Corporate Consultants To \$17,000

Tests for inventory control, production control and maintenance. Minimum requirement of 5 functional areas or manufacturing supervision required. Experience in use of EDP desirable. Positions report to corporate director of management information systems. These positions require up to 50% travel, and offer excellent opportunity for advancement.

Programmer/Analysts

Required for development of computer programs in the entire MIS spectrum including production and inventory control, simulation, mathematical models, and analysis, etc. Will work with IBM 360/50 and IBM/370 computer and data transmission to be used. Excellent opportunities for advancement into senior areas and plans including Corporate Systems Consultant.

These positions are with an international electronics firm, located in southern New Jersey, engaged in developing and implementing management information systems.

Write to full detail offering application & salary history. **2088 TIMES**
An Equal Opportunity Employer

How to keep up and cash in on the explosive changes in Computer Science:

PROGRAMMER/ANALYSTS

360/50, 30, 402 and 80/80-series. more sophisticated computers and Pulse Department's Program of Social Science's Automatic Budgeting. challenging work for Computer Programming, finance and experience needed personnel with the City of New York.

Completed applications must be received by Nov. 25, 1970, at 10:00 AM. Applications received thereafter will be held in reserve.

SENIOR ANALYST
\$11,000 to \$14,000 salary with 1970 experience. Minimum 2 years' experience in the same field.

TRAINEE
\$7,500 starting \$8,900 after 1 year \$9,400 after 2 years

ANALYST
\$14,000 to \$12,200 salary

COMPUTER SYSTEM ANALYSTS

NEW YORK CITY—The largest employer of Electronics Data Processing in the world.

Let an area for career growth. The potential of EDP for improving operations of City government begins to be realized. Only a few openings remain.

Send your resume to:

228 Canal Street, New York City, N.Y. 10013 354-8100

Consolidated Software Inc.

30 East 42nd Street New York, N.Y. 10017
(212) 699-1480
An Equal Opportunity Employer

Join THE LIBRARY OF COMPUTER AND INFORMATION SCIENCES.

Each month, the Library screens hundreds of books, and chooses only the most advanced, most significant, most informative.

Books on programming. Software. Hardware. Theory. Management and management uses of the computer.

Books that help thousands of executives, EDP managers, programmers and technicians keep up to date. Rise in their careers. And shake the money tree.

All books are yours at savings up to 30% — often more.

And for every four books you buy, you may choose a free bonus book.

What are you waiting for?

- (retail prices shown)
- 56430. INTRODUCTION TO STATISTICAL DATA PROCESSING.** Theodor D. Sterling and Seymour V. Pollack. The first and only comprehensive book, including brilliant summaries of heuristic techniques and multivariate analyses. 680 pages. **\$12.50**
- 70070. PRINCIPLES OF HOLOGRAPHY.** Howard M. Smith. The history, theory and practice of one of the fastest-moving areas in applied science today. **\$9.95**
- 34090. APPLIED NUMERICAL METHODS.** Brice Carnahan, H. A. Luther and James O. Wilkes. Tremendously important new book presenting practical solutions to problems in science, engineering and applied mathematics. 624 pages. **\$14.95**
- 56490. INTRODUCTION TO COMPUTATIONAL LINGUISTICS.** David G. Hays. Comprehensive work in an exciting new field. Ideal for self-tuition. **\$9.75**
- 56140. INTRODUCTION TO OPERATIONS RESEARCH.** Frederick H. Hillier and Gerald J. Lieberman. Basic technology and techniques, with emphasis on motivation and simplicity of explanation. **\$14.75**
- 42170. DIGITAL COMPUTER SYSTEM PRINCIPLES.** Herbert Helleman. A unified and authoritative overview. **\$13.50**
- 42370. DISPLAY SYSTEMS ENGINEERING.** Edited by H. R. Luxenberg and R. L. Kuehn. Thorough exploration, replete with illustrations and diagrams. **\$16.50**
- 70350. AN INTRODUCTION TO PROBABILITY THEORY AND ITS APPLICATIONS—VOLUME I.** William Feller. Self-contained introductory course; mathematical principles, modern techniques. **\$10.95**
- 54360. HYBRID COMPUTATION.** George A. Bekey and Walter J. Karplus. Complete overview of theory, mechanization, and applications. Ideal for industrial and academic users. **\$13.95**

Special Introductory Offer:

Take any 3 books

(values to \$48.95)

for only \$1⁰⁰ each

with a short trial membership

- 41660. ELEMENTS OF DATA PROCESSING MATHEMATICS.** Wilson T. Price and Merlin Miller. All the math necessary for understanding the mysteries of modern computer programming. **\$10.50**
- 38160. CIRCUIT DESIGN OF DIGITAL COMPUTERS.** Joseph K. Hawkins. At last—a simple, straightforward exposition of principles, applications and limitations. **\$17.50**
- 54120. THE HUMAN SIDE OF PLANNING/MOVING MOUNTAINS.** A dual selection. David W. Ewing on tailoring programs to people. Plus Henry M. Boettinger on the do's and don'ts of communicating ideas. **\$13.90**
- 81840. SYSTEMS, ORGANIZATION, ANALYSIS, MANAGEMENT.** Edited by David I. Cleland and William R. King. The first comprehensive evaluation of this startlingly successful challenge to traditional management thinking. **\$10.50**
- 64520. NEW POWER FOR MANAGEMENT.** David Hertz. The definitive work on the revolutionary management sciences. Indispensable. **\$8.95**

- 40410. CONVERSATIONAL COMPUTERS.** Edited by William D. Orr. Comprehensive review of the latest developments by J. C. R. Licklider, John McCarthy, Vannevar Bush, and others. **\$8.95**
- 82560. TECHNIQUES OF SYSTEM ENGINEERING.** Stanley M. Shinnars. The most complete and up-to-date presentation available on one of the fastest changing fields today. **\$14.00**
- 81870. SYSTEMS ANALYSIS: A Diagnostic Approach.** Van Court Hare, Jr. A highly useful book for "problem solvers," perfect for self-instruction. **\$12.50**

Trial Membership Application

The Library of Computer and Information Sciences 7-865
P.O. Box 7777, Riverside, N.J. 08075

Please enroll me as a trial member and send the 3 books whose numbers I have indicated. Bill me just \$3.00 for all 3 plus shipping and handling. If not delighted, I will return them within 10 days and my membership will be cancelled. As a trial member, I need accept only 3 more selections during the next 12 months, all at reduced member prices plus shipping and handling. I understand that savings range up to 30%, and occasionally more. Each month, I will receive advance reviews describing forthcoming selections, along with a convenient form for requesting alternate selections or no book at all. For every 4 selections purchased, I may choose a free bonus book. (Introductory offer counts as the first selection).

3 books for only \$1.00 each
(write in numbers) _____

NAME _____

ADDRESS _____

CITY _____ STATE _____ ZIP _____

Books bought for professional purposes may be a tax-deductible expense. (Offer good in continental U.S. and Canada only.)

Line Control and Terminal Management IN OS/360— a proposed control system

Robert M. Winick
IBM Corporation
Systems Development Division
Research Triangle Park, North Carolina

This article presents some of the problems and peculiarities of controlling the hardware in a telecommunications environment. Because of the wide diversity of terminals comprising a teleprocessing network and the innumerable ways that software facilities can be combined to produce a total real-time control system, a set of programming functions rather than an integrated software package is proposed. Emphasis placed upon the line control and terminal discipline required to manage the remote stations. The set of functions described will provide control for both start-stop and binary synchronous hardware.*

The job of any input-output control system is to regulate the data flow between the external devices and the central processor. The most efficient control system is generally the one which handles the largest volume of data in the least amount of processor time with the smallest requirement of central processor storage. In a telecommunications environment, core and execution time are only two of the resources whose management is critical to the efficient operation of the control system. In most networks, one or more terminals and their data sets are attached to a communications line which, in turn, attaches to a data set and then to a transmission control unit. Several control units multiplex to an IBM System/360 computer. Thus the combined costs of the hard-

* Since this article was written, many of the concepts have been incorporated into newly announced IBM telecommunication software support for Operating System/360 known as TCAM (Telecommunications Access Method).

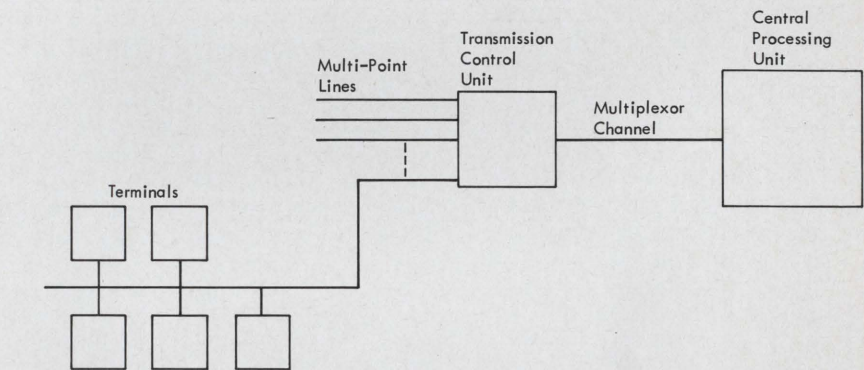


Figure 1. Multipoint Leased Line Configuration

ware required to attach a far-flung network of terminals to a central processor is often as expensive as—indeed, often more expensive than—the rental cost of the computer itself. Therefore, the control system must provide optimal operation of the telecommunication lines and terminals.

Various problems encountered in the design of a control system for a telecommunications environment are described in this article. Because of the high number of variables involved in any specific system, a total solution is not proposed, but rather a set of functions which, by selective combination, can provide a software package tailored to the installation's unique requirements. Both start-stop and binary synchronous communication, and three types of communication lines—point-to-point switched—are considered.

Start-Stop Multipoint Lines

Of the three types of communication lines, multipoint leased lines provide the greatest centralized control of traffic.

A terminal may neither accept nor enter messages until "invited" to by the host computer. This operation is essential if there is to be organized communication between the central processor and the several stations sharing the same line. Prior to each operation, all terminals on the line could be de-selected and placed into control mode. Each terminal can now recognize only its unique polling or addressing sequence. A terminal that recognizes its addressing characters responds negatively—i.e., it cannot accept a message—or responds positively, and is thus selected and enters text mode. A terminal that responds negatively to its addressing sequence is indicating either a hardware failure, a procedural malfunction such as the terminal being placed off-line or a remote printer being out of paper, or, in a buffered terminal, that data is being entered into the buffer. This negative response is treated as an error condition by the control system.

Unlike addressing which occurs only when the central processor has traffic

for that terminal, polling of each terminal to solicit messages from that station occurs at specified times. When a terminal recognizes its polling characters and responds positively, it becomes selected, enters text mode, and transmits a message to the central processor.

The sequence of polling the terminals on a line is controlled by an "invitation list" for that line. The invitation list contains the terminals that are to be polled, and the order in which they are to be polled. Any terminal may be repeated in the list two or more times. Assuming the installation does not limit the maximum number of messages that may be entered at any one time by a terminal, a station which has responded positively to a poll may be continuously re-polled until it has entered all of its messages. No other terminal may enter messages during this period. More often than not, a station will not have a message ready to transmit when it is polled, and a negative response will be automatically generated.

When the negative response is received by the computer, the control system will perform one of three functions, depending upon which transmission priority has been selected for that line by the installation. The next terminal in the list will be polled, or traffic from the output queue will be transmitted to the stations, or the pointers to the list will be reset and an optional delay taken before the next polling pass is made. If "send priority" (i.e., the central processor's sending operations have higher priority than its receiving operations) was chosen, all messages from the output queue will be sent to the appropriate terminals on the line. Polling will then resume with the current entry in the invitation list.

If "equal priority" (i.e., the central processor's sending operations have equal priority with its receiving operations) was selected, polling will resume with the current terminal in the list until the list is exhausted. At that time all messages from the output queue will be transmitted. An optional delay may be invoked at the end of the list which must complete before the next pass is made through the invitation list.

If "receive priority" is used (i.e., the central processor's receiving operations have priority over its sending operations), the delay determines the period of time during which outgoing traffic will be sent to the terminals on that line. If the pass through the invitation list was productive—i.e., one or more messages were received from terminals on the line—the optional delay is not invoked at the end of the pass. Only if the pass through the list was unpro-

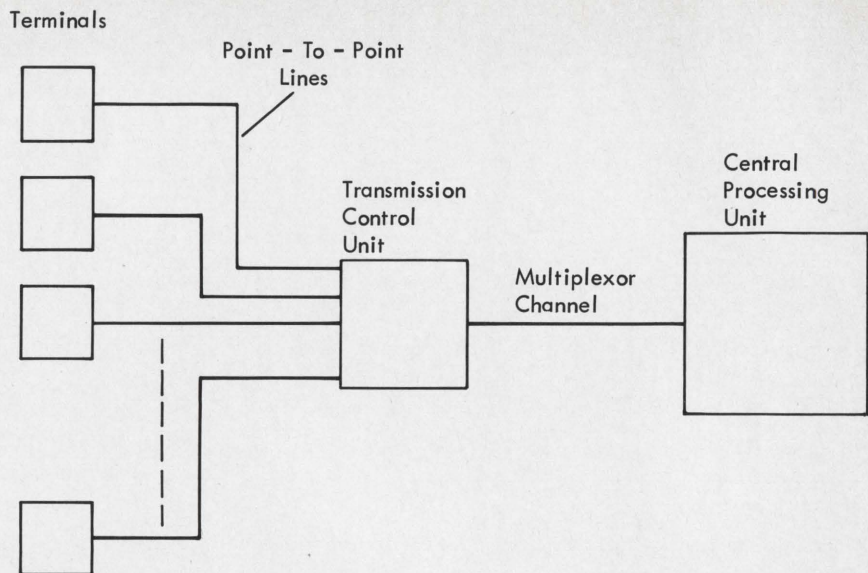


Figure 2. Point-to-Point Leased Line Configuration

ductive is the delay put into effect. Thus, traffic incoming to the central processor is not unduly delayed and, in the absence of incoming messages, unproductive polling is diminished.

A hardware feature common to IBM System/360 multiplexor channels removes the burden of handling unproductive polling from the control system. Called "autopoll," the facility allows negative responses from polling sequences to be handled completely in the multiplexor channel. The channel then restarts the polling operation with address pointers incremented to the next entry in the invitation list. When the end of the list is encountered, the channel program instructs the channel to reset to the beginning of the list. Thus, the only time the control system need be aware that polling is in progress is when a message is elicited from a station. The autopoll feature imposes its very rigid format upon the design of the invitation list. By using this design for both autopoll and programmed poll, minimal work is required for the control system to change between one and the other.

The use of polling and addressing sequences for teletypes and terminals such as 1060's and 2740's enables a specific station on the line to be chosen to communicate with the control program. An additional capability is available with terminals such as 1030's and 1050's. A particular component of the terminal being selected may be specified. For example, a card reader of a 1050 may be polled for input to the central processor and, subsequently, the printer may be addressed for output.

An important characteristic of multipoint-terminal systems is the centralization of terminal control in the host computer. Both the direction and duration of traffic can be strictly governed

by the control system. Since the system knows with whom it is in contact at all times, terminal identification is redundant. Message security and data privacy can be assured.

Start-Stop Contention (Leased) Lines

A scheme less costly than multipoint terminal control is provided by contention terminals. There is no hardware in the control units to allow de-selection of terminals or selection of a specified station. As a result, the central processor has no method of informing a remote location whether it is to accept a message or enter a message. All stations on a contention or point-to-point line are always in a selected state. The control system must therefore always be prepared to receive data from these remote stations unless it is transmitting an outgoing message to them.

Since the control system has no facility for organizing the control of traffic to and from these terminals, the installation must provide solutions to many of the inherent problems. When a remote station is entering a message, it does not know whether another terminal is also keying in a message. When the control system is transmitting a message, it does not know whether a remote terminal has just decided to enter a message. Furthermore, the remote stations are always in a selected state causing all messages sent from the central processor to be received at all stations on the line.

A method available to the control system for helping to regulate point-to-point traffic includes issuing a "prepare" command to the channel. When a message is being entered from a remote station, the "prepare" can be chained to a "sense" command which

would set a program switch inhibiting the control system from attempting to send any messages out at the time. If traffic should be initiated from the central processor just prior to the switch being set, two-way traffic on the line would cause a hardware error which could be corrected in the error-recovery procedures for the control system.

Message integrity cannot automatically be ensured by the control system. The installation must take steps to verify and acknowledge messages incoming to the processor. Data security can be assured only if the user restricts each point-to-point line to a single station.

Start-Stop Contention (Switched) Lines

Dial lines often provide many users with an economical alternative to leased tele-processing lines. Customers may set up terminals such as 2740's or 1050's with dial features or teletypes AT&T 33/35 (TWX) which operate on switched-connection telephone lines. Once contact between the terminal and the processor is established, the 2740's and TWX's are controlled as point-to-point, the 1050's as multi-point terminals. When the processor initiates contact, the control system knows the terminal dialed; but when the remote station initiates the call, a means for the caller to identify himself is often desirable. TWX, for example, has an optional hardware facility for the caller to send an identification sequence. The control system also can allow the operator at the remote location to include in the header of his messages an identification of the calling station.

The control system permits great flexibility in the method of establishing the call, and in the frequency of the calls. For any switched line, either the remote location, or the processor, or both, may initiate contact. The processor could be directed to call when there is at least one message for a remote terminal, or at a predetermined time of day, or at a specified interval after the previous call. One or more telephone lines could be set up at an installation for establishing a call. Thus during periods of heavy traffic when one line is busy, an alternate line could be obtained.

The control system supports the WATS (Wide Area Telephone Service) bands of common carrier lines. The tariff on each WATS band is determined by the territory covered by the band. Thus the control system will utilize the least expensive band possible to call a remote location. Only if that band is busy will a line in the next band be used by the control system to contact the specified terminal. If no lines are available for the processor to call

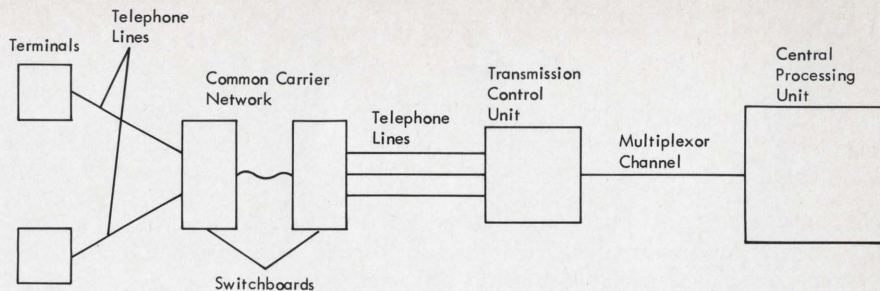


Figure 3. Point-to-Point Switched Line Configuration

a switched connection terminal, a request is queued for the first of the lines. When that line becomes free, the desired connection may then be made.

Buffered Terminals

All the above-mentioned terminal types have the one following important characteristic: When a station is selected and entering a message to or receiving a message from the processor, a physical data path is established from the particular I/O component at the terminal to the central processor. This path is maintained until the entire message has been transmitted.

In contrast to this, terminals such as 2740 Model II, 1130, 2780 and remote S/360 Model 20 can operate to take advantage of its hardware buffer. When the terminal initiates a message, the first "block" of the message is entered by the I/O component into the station's buffer. When the station is subsequently selected, a path can be established between the control unit (buffer) and the processor. The data rate on the communication line is far greater than could be achieved with a non-buffered terminal where the transmission rate was determined by a card reader or a printer. The terminal is then de-selected while the I/O unit is entering the next "block" of the message into the buffer. In a multipoint configuration, this interval permits all other "ready" terminals on the line, each in turn, to be selected to enter or to accept the next "blocks" of their messages.

During the data transfer between the I/O unit and the buffer, if an input error is encountered, the data is re-entered to the buffer. No "line time" is required for this operation since the station is not ready and will not yet respond affirmatively to its poll. On output from the buffer to the I/O unit, corrections of output errors are possible off-line in a similar fashion. Thus a benefit of buffering data at the terminal site is that the central processor and communication line are freed of the responsibility of re-sending (or re-receiving) message data to correct terminal I/O errors. Of

course, errors arising during transmission between the terminals and central processor rather than during the inputting or outputting of data, will still require a retransmission.

Thus multipoint buffered terminals present several new problems for the control system. A transmission, which had been previously equated with a complete message, can now indicate a message block. Control information in the processor must be defined for each buffered terminal through which all the separate message blocks originating at that site may be logically chained to each other.

A scheme must also be devised whereby the control system knows precisely when to return to each station to select it again. If it returns too soon, a "not ready" response will be generated by the terminal. Processor time will have been lost constructing the channel program and, in the case of output operations where messages are queued on a disk, disk time will have been wasted reading a message block. (The message block must be discarded and subsequently re-read from the disk since to retain it would mean tying up the processor buffers until the terminal was ready.) If the control system returns to select the line too late, valuable line time will have been lost.

A scheme for determining when a station may be selected again requires the installation to define a data rate (in characters per second) to describe the data speed between each I/O unit and the terminal's buffer. For output messages, the control system can take the product of this rate and the number of characters in the current message block as the time that must elapse before the terminal can again be selected. For input messages from the terminal, no approximation can be made, since an undetermined amount of characters will comprise each message block. Since the processor work involved in incrementing an invitation list to the next entry is minimal, the inability to predict the precise time to re-poll a terminal for the next message block is not at all serious.

Two of the three types of priority management are reasonable for buffered terminals. In equal priority, a complete pass is first made through the invitation list. If the autopoll feature is in use, all of the active terminals on the line are polled to permit each in turn to enter a message block. If a programmed poll is employed, only these terminals not currently engaged in accepting data from the processor or not held up in a delay interval will be polled. Thus each terminal in the list is invited to enter a message block.

When all of the terminals in the invitation list have been handled, those stations not involved in entering messages and for which outgoing traffic has been queued will be selected, one after the other, and sent a message block. The interval that must elapse for each station before it can again be selected is then calculated as the product of the data rate of the output component of the terminal and the number of characters in the message block.

The only difference between equal and send priority is that the latter does not require output traffic for terminals to wait until the end of the invitation list is reached. At the end of receipt of a message block or negative response to a poll, an outgoing block of data will be sent to each station that can accept it.

These problems discussed for buffered terminals via multipoint environment are not found in point-to-point or switched networks since contact with only one station at a time is possible.

Device Characteristics

Most of the terminals that can operate as buffered stations are handled by binary-synchronous (BSC) line control rather than start-stop. Although the types of terminals that can be mixed on the same line are limited for start-stop communication, most binary synchronous types may be mixed on a line. Moreover, one or more BSC terminal types can call the computer over the same set of dial lines. This ever-increasing family of compatible tele-processing stations, if it is to find full support for its terminal compatibility, requires that the control system provide a language to describe the functional characteristics of its member terminals. Thus, a station is not defined or handled by the name of the device; rather, once the name of a device is given, its characteristics are looked up and all future references made to these characteristics. For example, the device is described to the control system in terms of its buffer size, ITB requirement, transmission code, etc. Thus, the channel program generation and terminal control may be organized simply and succinctly for

all of the terminals comprising the functionally compatible set.

Additionally, the inclusion of an unsupported device is not a major effort if the device can be defined to the control system in terms of functional characteristics already supported. The language provided to the user could map his functional definitions into a string of bits describing the station to the control system.

Line Control Considerations

Coordination of data transfer between the host computer and remote terminals is maintained by use of line-control characters before, during, and after each message. If a message is switched between two like terminals, the control characters in the incoming data stream may be left unchanged when the message is outputted to its destination. For example, text entered from a 1050 is delimited by \textcircled{D} and \textcircled{C} , and segmented into blocks by \textcircled{B} . If the message is forwarded to a 2740 with station control feature, the line control may be left intact. Moreover, the segmented blocks of the message may be of varying size. The "variable format" facility of the control system allows this retention of line control in the incoming messages.

If, however, the message is destined for, say an 1130 station, the control characters must be deleted by the control system when the message arrives at the CPU. "STX" and "EBT" codes must be inserted by the control system to delimit each block when the message is prepared for transmission to the 1130. The last block, however, must be delimited by "STX" and "ETX," and the entire message ended with an "EOT." The inclusion of control characters appropriate to the destination station is further complicated by the need to reblock the segment blocks into units to best meet the requirements of the destination station. Since only one block size may be specified for a given terminal or component, all messages to that destination will be blocked to the same size. The block size for a station may be altered on a per-message or per-application basis. This "fixed format" facility of the control system could remove the awesome task of blocking the message segments and handling line control from the user of the telecommunications system.

Akin to the manipulation of line-control characters is the handling of format-control characters. This could provide for the movement and positioning of the I/O components at the remote stations. Characters such as "new line," "carriage return," "line feed," "tabulation," etc., interspersed in the message text allow a great flexibility in control of the tele-processing

components. A macro-instruction facility can allow the user to insert or delete specified format characters from his message.

There are, of course, numerous other functions associated with line and terminal management. An effective discipline for the I/O control relies heavily upon the techniques by which messages are queued, buffer space is allocated in the host computer, and processing functions are available to serve the diversity of applications. Unfortunately, these topics are beyond the scope of this article. I have, however, explained the methods by which a proposed control system could manage start-stop and BSC lines, buffered and non-buffered terminals, point-to-point, dial, and multipoint networks. Perhaps the most significant test of the above-mentioned techniques is their adaptability to specific installations. If, through simple definition of macro-statements and selection of functions, the user can tailor the proposed control system to monitor his tele-processing network so that he achieves maximum utilization of his communication lines in a minimum of main storage and with a minimum of processor time, the test of the system will be proved.



ROBERT M. WINICK

The author is a staff programmer in telecommunications in IBM's Systems Development Division laboratory at Research Triangle Park, N. C. He helped design and implement basic and queued telecommunication access methods (OS/BTAM and OS/QTAM). At present, he is coordinating the development of an advanced telecommunication access method (OS/TCAM).

Mr. Winick has a B.A. in mathematics from Columbia University.

FINANCIAL CURRENTS

Computer System Architects, Inc. has been formed in Cambridge, Massachusetts to supply system-architectural needs to companies developing computer-based products. The principals in the company are John Thron, President; Robert Tomlin, Vice President—Research; and Robert F. Morse, Vice President—Operations.

* * *

Computers Unlimited, Inc. has opened its first computer center in Rochester, N. Y., to offer time-sharing, batch processing and programming services to EDP users in Upstate New York. The new center is equipped with an IBM 360/67 computer, and the peripheral equipment that is specially designed for time-sharing.

* * *

Bradford Computer & Systems, Inc., New York, has announced a five-year agreement with International Paper Co. to continue to manage and operate IP's corporate computer data center in New York City. Bradford Computer Systems will also provide systems design and other consulting services to International Paper.

* * *

International Systems Associates, Ltd., New York, has announced the formation of two new divisions **ISA Forms, Inc.**, and **J. Carlton's, Inc.**, both of New York. ISA Forms, Inc., will market a complete range of business forms, computer tapes and disks, ribbons and punch cards; and J. Carlton's, Inc. will utilize recent ISA advances in mail order data processing technology to market "new and unusual" items that range in price from \$3 to \$300.

* * *

Levin-Townsend Service Corp. (LTS), New York, and **Sigma Data Computer Corporation**, Bethesda, Maryland have jointly announced an agreement, whereby LTS will participate in the marketing of Sigma Data's Inquiry and Reporting System throughout the United States and Canada. Sigma Data is engaged in the application of advanced computer analysis and software techniques for government and industry and LTS, a subsidiary of Levin-Townsend Computer

Corporation, is currently engaged in the marketing of several software packages, as well as providing consulting, programming, education and data center services.

* * *

Show World, Inc., New York owners and managers of COMPSO, the three regional Computer Software and Peripherals Shows and Conferences, has merged with and into **Computer Expositions, Inc.**, a publicly owned company. Both companies specialize in trade show management in many fields, and will continue to serve business and data processing management through the new organization.

* * *

A group of highly specialized problem solvers formerly with IBM have joined forces to form **CORSTAR Business Computing Company**. CORSTAR will be based in White Plains, N. Y., and will provide the capability of creating customized Management Information Systems and their related Databanks. John F. Sitar is the President of the new company.

* * *

Alphanumeric, Inc. (OTC), Lake Success, N. Y., and **Alphatext Systems, Ltd.**, a Canadian corporation, announced the formation of a jointly-owned Ottawa-based Canadian company called **Alphanumeric Textran, Ltd.** Alphanumeric is a supplier of computerized services and equipment for the printing, publishing and data processing industries. Alphatext Systems is an Ottawa-based firm which offers computerized text processing services.

* * *

J. Roy Morris, President of **Cybermatics, Inc.**, (OTC), the Fort Lee, New Jersey based computer services company, and Sal Carci, President of **Carci Computab Systems Inc.**, (OTC), Hauppauge, New York, a computer business forms company, announced an agreement in principle for the merger of Carci Computab into Cybermatics. Carci Computab manufactures and sells continuous, single and multi-copy business forms used in computer systems, whereas Cybermatics is an independent software company serving

as a general systems contractor and supplier of on-line systems and computer based services.

* * *

Access Systems, Inc., Paramus, New Jersey, has announced that the company will change its name to **AXICOM SYSTEMS, INC.** Axicom offers time-sharing capabilities and services to the business and scientific community of the Northeastern United States, with the UNIVAC 1108 and an Exec 8 operating system. Clients of Axicom are offered the choice of real-time, demand or batch processing capabilities.

* * *

Computer Transceiver Systems, Inc. (CTSI), Upper Saddle River, N. J., has entered into a field service agreement with **Honeywell, Inc.** According to the agreement, Honeywell will provide a complete range of maintenance and repair facilities for CTSI's products line. CTSI is currently producing the Execuport 300, a lightweight thermal-page-printing data transceiver. The 27-pound unit is completely self-contained in a portable carrying case. In addition to the Execuport 300, CTSI is developing several other related products in the data communications field.

* * *

Automatic Data Processing, Inc. (ADP), Clifton, New Jersey, a national computer services company, has reached an agreement in principle to acquire **Electronic Data Service, Inc.** (EDS), a Chicago-based data processing service firm; has agreed to acquire **MSM Computer Service** of New York City; and has completed the acquisition of **Tamcor, Inc.**, a New York City data processing firm. Electronic Data Service, Inc., provides payroll, accounts receivable and a broad range of commercial data processing services to 175 customer firms in the Chicago area. EDS's computer center will now serve as a base for marketing ADP's payroll and other commercial data processing services in the Chicago area.

* * *

Scientific Resources Corp., (NYSE), Philadelphia, has announced a joint development program and marketing agreement with **Globe Universal Sciences, Inc.** (Private), Midland, Texas. Under the agreement the new seismic software developed by Globe will be marketed exclusively by Scientific Resources. Globe is an integrated earth sciences company operating in the United States, Canada and Alaska's Northern Slope, and Scientific Resources Corporation is a computer technology company in the information industry and a developer of total computer systems for industry, government and management.

PROGRAMMERS

BOLD CHALLENGES IN DATA PROCESSING

The name of the game is "Do a better job—faster!" We play it all the time. We're the civilian organization which serves Armed Forces personnel through worldwide "PX" and "BX" outlets. We're seeking more and better EDP information to improve our performance in retailing!

If you enjoy a challenge, and the opportunity to show what you can do with excellent equipment and professional associates, **your route to success may be with us!** We need:

COMPUTER PROGRAM- MERS

\$9,300 - \$11,200

You'd be writing specific programs to organize and process our management information by the most rapid and meaningful methods.

Our EDP division is fully equipped with 360 MOD 30/40 Disk/Tape/Card systems using ALC or COBOL, and is staffed with real professionals who know how to use them!

To qualify for one of these challenging opportunities, you'll need at least one year of programming experience on third generation equipment using COBOL or assembly language.

In addition to a good starting salary, you'll have outstanding fringe benefits, including life insurance, family coverage in our hospital-medical-surgical plan, liberal vacations, sick leave, retirement plan, and opportunity for personal and professional advancement throughout our worldwide organization, since we promote from within!

You must be willing to relocate, and accept occasional transfers throughout our worldwide network.

Relocation expenses will be paid. If you qualify, RUSH your resume, which must include your salary history to:

Mr. Chris Ciampaglia
DEPT. SA-1

You will be contacted within two weeks!

ARMY & AIR FORCE EXCHANGE SERVICE

THE **PX-BX** SYSTEM

3911 WALTON WALKER BLVD. DALLAS, TEXAS 75222

Equal Opportunity Employer

Drexel Data Systems, Conshohocken, Pa., has announced a merger agreement with **Ventura-Data Corp.** of Conshohocken, Pa., whereby the company becomes an operating division of VDC. Drexel Data Systems is a data processing software and consulting firm in all phases of EDP, including programming, systems, planning, communications and control.

* * *

A new management consulting firm, **Decision Sciences Corporation**, Jenkintown, Pa. has been formed to specialize in decision support systems used to aid management decision-making in government, business and industry. The President of the new company is Donald F. Blumbert, formerly Vice President of Computer Sciences Corporation.

* * *

Calculator-Computer Leasing Corporation (CCLC) of Pittsburgh has acquired **Caribe Data Processing, Inc.** (CDP), a computer service in San Juan, Puerto Rico. The Chairman of CCLC said that the purchase was made with cash and CCLC stock, and included a computer programming school, Royal Computer Institute, also located in San Juan. CDP develops computer programs for payrolls, inventory control, accounts receivable and bookkeeping functions, and markets a complete computer service for these functions.

* * *

Comress, Inc., Washington, D. C. has announced the acquisition of an 80% interest in **Complex Systems, Inc.**, of New York City. Complex Systems specializes in the development of custom tele-processing computer systems for financial institutions and organizations and Comress, Inc. is a computer software and consulting firm.

* * *

National Data Processing Corporation, Cedar Rapids, Iowa has changed the name of the company to Network Data Processing Corporation and the company has opened executive Headquarters in Oak Brook, Illinois.

* * *

Systems Engineering Laboratories, Inc., Fort Lauderdale, Fla. and **Spectral Dynamics Corporation** of San Diego have jointly announced that they have reached an agreement in principle under which Systems will offer to exchange 2/3rds of a share of its common stock for each share of Spectral Dynamics common stock. Systems, is a manufacturer of digital computers and systems utilizing them. Systems markets its computers, systems and other products through direct sales and

service locations throughout the United States and Canada. Spectral Dynamics is a designer and manufacturer of electronic instruments used in vibration and acoustic analysis, data acquisition and structural design and of custom systems using these instruments.

* * *

Delta Computer Corporation, Baton Rouge, La., has filed a registration statement with the Securities and Exchange Commission covering the proposed sale of 200,000 shares of Common Stock. Delta Computer provides general data processing services for commercial, industrial, financial, governmental and educational institutions.

* * *

Last year several major U. S. and Canadian organizations banded together to create the "Optical Character Recognition User Association". To establish a common denominator, only users of one manufacturer's optical equipment were invited to join the Association. However, in a two-day session just completed, the organization has decided to open its doors to all OCR Users.

* * *

Factsystem, Inc. has announced licensing of its total management information system to **Data Power, Inc.** The Factsystem software package is designed to make comprehensive processing service available to a full spectrum of small and medium-sized businesses, in addition to the larger organization conventionally employing automated processing.

* * *

Fabri-Tek, Inc., has acquired the Connector Division of **National Connector Corporation** in an agreement signed by officials of both companies. The division will be integrated into Fabri-Tek's total marketing strategy as a supplier to the computer industry and will be operated within the company's management structure. Fabri-Tek is a leading manufacturer of computer memory components and systems, special use computers, educational computer trainers and instructional programs and printed circuit boards.

* * *

Control Data Corp. has announced that it has acquired all of the outstanding stock of the **Precision Data Company, Ltd.**, of Toronto, Canada, in exchange for 33,268 shares of Control Data Common stock. Precision Data is engaged in the manufacture and sale of tabulating cards, disk packs, magnetic tape, and other products related to the computer business. It also manufactures and sells a magnetic tape cleaner. Control Data also provides a

broad range of other computer systems, peripheral products, services and business supplies to the data processing industry. CDC's product line of business supplies includes tabulating cards, business cards, business forms, disk packs, computer printer ribbons and certified magnetic tape.

* * *

Control Data Corp. and Biomedical Computer Services, Inc. have entered into an agreement to cooperate in the development and implementation of total systems capabilities in the health care field. Under terms of the agreement, Biomedical Computer Services of St. Paul will develop a total integrated system design including applications and problem-solving techniques for the administration and operation of hospitals, physicians' offices, clinics, extended care facilities and other allied health care services. Control Data will develop operating systems and related software and communications capability for medical utilities employing CDC 6000 series computer systems.

* * *

Ticket Reservation Systems, Inc. has announced that it has acquired the business and assets of **Terminal Applications Corporation**, a wholly-owned subsidiary of Control Data Corporation Terminal Applications Corp. is engaged in developing a range of application services via terminals over a national communications network. An Example of one of the first services to be offered by Terminal Applications Corp. will be a computerized fare construction and automatic ticketing service for the airline industry. TRS' electronic box offices are located in banks, department stores, super-markets, travel agencies and other retail establishments, offering customers reserved seat tickets for a variety of theatrical, entertainment and sports attractions in the United States, Canada and Great Britain.

* * *

University Computing Company, Dallas, Texas and **LTV Aerospace Corp.** have announced that negotiations have proceeded for the acquisition by UCC of half the 71 percent stock of **Computer Technology Inc.**, which is held by LTVAC. UCC is a multinational computing services firm with operations throughout the United States, and CT performs computer services for Ling-Temco-Vought, Inc., parent of LTVAC, and certain of its subsidiaries, including LTVAC. The agreement provides for a three-year period in which UCC will furnish corporate, financial, marketing and operating management advice and consultation relating to the operations of CT.

World Computer Corporation, Dallas, Texas, has announced that they will acquire National Communications Corporation, also of Dallas, Texas. NCC furnishes engineering, installation, maintenance and related services to the telecommunications industry including telephone companies and equipment manufacturers. World Computer Corporation presently offers customers computer software services, teleprocessing capabilities, equipment leasing and brokering, engineering design and development, and hardware systems manufacturing and marketing.

* * *

Recognition Equipment Incorporated, Dallas, Texas, and **Data Craft Corporation**, Fort Lauderdale, have announced that they have reached an agreement in principle under which Recognition Equipment will acquire 889,430 shares of Datacraft common stock and warrants to purchase an additional 499,169 shares of Datacraft common stock in exchange for the issuance to Datacraft of 142,309 shares of Recognition Equipment common stock. Recognition Equipment Incorporated is a manufacturer of optical character recognition equipment, and Datacraft Corporation is a manufacturer of digital computers and magnetic core memory systems.

* * *

Computer Complex, Inc., Houston, Texas and **Com-Share, Inc.**, Ann Arbor, Michigan, have agreed in principle to merge the two companies with 1.5 shares of Computer Complex, Inc. common stock to be issued for each share of Com-Share, Inc. common stock. Under the terms of the agreement, the time-sharing operations of Computer Complex will be merged into COM-Share which will operate as a wholly-owned subsidiary of Computer Complex, Inc. Com-Share, Inc. provides time-sharing service in 34 cities in the United States and Canada. Computer Complex provides time-sharing service in 18 cities. The combined companies will provide increased national time-sharing coverage since the companies do not operate in the same areas to any substantial extent at this time.

* * *

Ennis Business Forms, Inc., Texas, has concluded the acquisition agreements of UP Corp., a New York City-based business forms company and for Hospital Data Systems, Inc., a Massachusetts firm specializing in hospital systems. Ennis will now warehouse its continuous and other stock forms for sale in the New York City

PROGRAMMERS

BOLD CHALLENGES IN DATA PROCESSING

If you're looking for professional challenge and opportunity for professional growth, your route to success may be with us!

WE NEED:

SOFTWARE PROGRAMMERS

\$12,300 - \$14,600

You'd help develop a nationwide teleprocessing system by implementing, modifying and maintaining operating systems; developing standard programming routines and procedures; providing technical advice and assistance to Application Programmers and Operations Personnel; analyzing and evaluating general software programs; and developing software to interface new devices.

You must have at least three years' programming experience using assembly level languages, with a minimum of 2 years of formal college training. At least two years' progressively responsible experience in monitor/executive/operating systems in the area of teleprocessing and/or remote inquiry response systems is also required.

Our EDP division is fully equipped with 360 MOD 30/40 Disk/Tape systems and staffed with professionals who know how to use them! YOUR professional and personal growth opportunity is unlimited in our modern, worldwide retailing system!

In addition, we offer you outstanding fringe benefits, including life insurance, family coverage in our hospital-medical-surgical plan, liberal vacations, sick leave, and retirement plans.

You must be willing to relocate and accept occasional transfers throughout our worldwide network. Relocation expenses will be paid.

Your assignment will be in our Dallas headquarters, which serves as the hub of our EDP network.

If you qualify, AIRMAIL YOUR RESUME, which must include your salary history, to:

M. W. Carter
DEPT. SP-1

ARMY & AIR FORCE EXCHANGE SERVICE

THE PX-BX SYSTEM

3911 WALTON WALKER BLVD. DALLAS, TEXAS 75222

Equal Opportunity Employer

area, and equipment is being installed there to produce continuous forms and specialty short-run business forms. Hospital Data Systems, Worcester, Mass., designs and manufactures a highly sophisticated line of hospital forms and systems under the trade name COPAC—Computer Oriented Patient Accounting Control.

* * *

Computer Image Productions, Denver, Colorado, has been formed as a division of Computer Image Corporation to produce educational and industrial films and tapes utilizing the Scanimate and Animac Computers de-

veloped by the company. Computer Image Corporation is a leader in computer animation for television, motion pictures, educational and industrial films and videotapes.

* * *

Computer Sciences Corporation, Los Angeles, Calif. has formed a Development Division to develop the future computer-based systems which the company will market as proprietary products. The new division will also be responsible for developing the advanced systems software which the company supplies to computer manufacturers and major users of computers.

Data Products Corporation, Los Angeles, Calif. has formed a Discfile Division to manufacture large disk store memories for computerized data storage and retrieval system. The new division will be responsible for line production of the new 6040 Discfile being marketed to the mainframe computer industry and the System/7000 Large Disc Store being sold with interface equipment and engineering services by the Corporation's systems division to the end user market. Data Products is a producer of peripheral electronic computer equipment, including line printers, core memory systems, card readers and punches, tape cleaners and testers. In addition, the corporation develops and manufactures data transmission and telecommunications equipment for commercial, industrial and military applications.

* * *

Republic Corporation, Los Angeles, Calif., has opened its new computer service center, managed by System Development Corp. (SDC). The center uses an IBM 360/65 computer and its major customers include large data processing users seeking to supplement their own data processing requirements. Additional services incorporating remote terminals for specific applications will be offered in the next few months.

* * *

Computer Publications, Inc. has changed its name "to more accurately define its multifunction research, advisory, and publications activities". The company will be known as Computer + Technology Information, Inc. Computer + Technology Information, Inc. has also announced the formation of a new division: Technology Research Bureau (TRB).

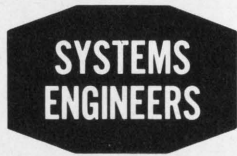
* * *

Transamerica Computer Company, San Francisco, has agreed in principle, to acquire Toronto-based Scientific/Commercial Research Services Limited (SCORE). SCORE provides system design and computer programming services for a wide variety of applications, including information retrieval, computerized typesetting, library cataloging, and audience measurement and analysis. Transamerica Computer, which provides a wide range of services in the computer industry, is a wholly-owned subsidiary of diversified Transamerica Corporation.

* * *

Caelus Memories, Inc., a wholly owned subsidiary of Electronic Memories and Magnetics, has formed a Canadian sales subsidiary, Caelus Canada Limited. The new Canadian subsidiary will be structured after Caelus' domestic marketing organization.

* * *



*If you are
programmed
for leadership*

PUSH HERE

ASHLAND OIL & REFINING CO. a leader in Petroleum Products and Chemicals — has challenging growth positions open for qualified professionals.

If you've got what it takes to lead a project team in the evaluation, design and development of computer applications . . . have a Bachelor's Degree and at least two years experience designing systems for large scale computers . . . you'll find you're moving up as you move in our rapidly expanding corporate headquarters EDP center.

Our computer center houses two System/360's; a 1000K, 16 tape, 2314 disc Model 65; a 128K, 6 tape, 2314 disc Model 40, and misc. punched card equipment. We use the full Operating System and have adopted PL/1 as official programming language.

You can expect an attractive starting salary, a comprehensive benefit program and an uncommon opportunity to use your leadership, communication and planning skills in a stimulating, growth oriented, professional atmosphere.

Ashland is a dynamic and progressive city with excellent schools. Only minutes away, you'll find gracious suburban living — boating and fishing — and woodlands steeped in Indian lore, happy hunting grounds for sportsmen, campers, explorers. A short drive brings you to Huntington or other metropolitan areas. You'll find lots to do in an invigorating four seasons climate.

Please send resume in complete confidence to:



Mr. G. F. Hiatt, Dept. SA-170
Employment Manager
ASHLAND OIL & REFINING CO.
1409 Winchester Ave.
Ashland, Kentucky 41101

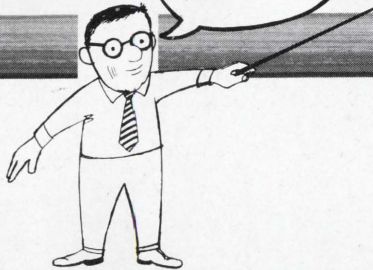
An Equal Opportunity Employer

ANALYSTS • PROGRAMMERS:

YOU CAN HELP DEVELOP A

total manufacturing control system

WANT A
PIECE OF
THE ACTION?



Sooner or later, you'll want to do better. And doing better is what to expect at Sikorsky. The chance to use your abilities in depth. To go and grow—from one absorbing assignment to another.

Consider the intriguing possibilities inherent in 33 sub-systems. A great breadth of action which includes *order entry . . . inventory . . . shop scheduling*—just to start your thinking.

Obviously, we want people who need involvement. People who can kick the bread and butter routine and get

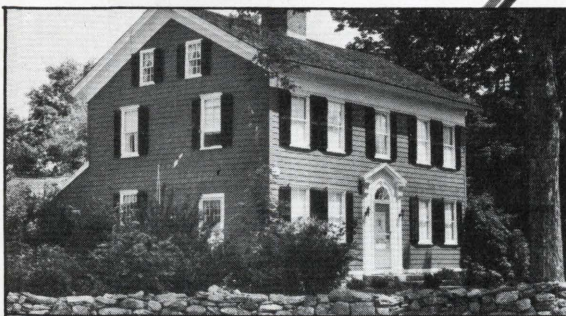
excited with us. And who want the personal and professional rewards associated with new dimensions.

The tasks and environment are here to support your creativity. Our inventory includes IBM 360's with graphics, tele-processing and time-sharing.

So, if you possess a degree—or a comparable background—get in touch *now*. *We have exceptional positions at all levels of experience.* (Plus a corporation-financed Study Program to help keep you moving up.)

For prompt consideration, please airmail your resume in confidence, stating salary requirements, to:

MR. L. S. SHALVOY,
PROFESSIONAL EMPLOYMENT



You'll like Connecticut living.

Sikorsky
Aircraft

STRATFORD, CONNECTICUT

U
A
DIVISION OF UNITED AIRCRAFT CORPORATION

An Equal Opportunity Employer

FREE PROGRAM LISTINGS IN SOFTWARE AGE

(Procedures and Practices)

- COST** There is no charge for computer programs listed in SOFTWARE AGE.
- PUBLISHED** The listings will be published in the first available monthly issue of the magazine.
All listings will be re-published in semi-annual summary issues of SOFTWARE AGE during the months of the S.J.C.C. and F.J.C.C.
- BROKERAGE** SOFTWARE AGE does not broker computer programs nor act as an agent. As an unbiased third party, SOFTWARE AGE is acting, solely, as a pipe-line of communications between buyers and sellers of computer programs.
- EVALUATION** SOFTWARE AGE does not compare or evaluate computer programs. The degree of seller on-site support and the extent of buyer capability virtually make the evaluation of any program meaningless.
- REQUIREMENTS** A prerequisite for any listing is that it be documented or supported to the extent of being operable by the buyer.
- ANONYMITY** A cross-coded reference number will be assigned to any program whose originator wishes to remain anonymous. Buyer inquiries will be forwarded to the originator. If the originator still prefers anonymity, buyer will be notified by SOFTWARE AGE.
- GROUPING** Listings will be grouped according to keyword, title, mainframe application and compatibility, industry, etc. As listings grow, more categories and definitions will be added.



2211 FORDEM AVENUE
MADISON, WISCONSIN 53701

FREE PROGRAM LISTINGS IN SOFTWARE AGE

SOFTWARE AGE FREE PROGRAM LISTING FORM

(REVERSE MUST BE COMPLETED)

New Listing
Revised Listing
Program Wanted
Broker Wanted

This program is: Utility Systems Scientific Applications Engineering Management Other

Title: _____ Number of Programs (if more than one)

Description: (Use reverse side if necessary)

Hardware Configuration:

Programming Language: _____ Documentation Provided: _____

On-Site Support/Debugging Available? Yes No Hours Guaranteed? Yes No

Patent No. _____ Copyrighted? Yes No Number of Programs Distributed _____

Check Here for Cross-Coded Reference \longrightarrow \longleftarrow Check Here for Cross-Coded Reference

(REVERSE MUST BE COMPLETED)

SOFTWARE AGE FREE PROGRAM LISTING FORM

(REVERSE MUST BE COMPLETED)

New Listing
Revised Listing
Program Wanted
Broker Wanted

This program is: Utility Systems Scientific Applications Engineering Management Other

Title: _____ Number of Programs (if more than one)

Description: (Use reverse side if necessary)

Hardware Configuration:

Programming Language: _____ Documentation Provided: _____

On-Site Support/Debugging Available? Yes No Hours Guaranteed? Yes No

Patent No. _____ Copyrighted? Yes No Number of Programs Distributed _____

Check Here for Cross-Coded Reference \longrightarrow \longleftarrow Check Here for Cross-Coded Reference

(REVERSE MUST BE COMPLETED)

This program is: For Sale Lease Franchise | Price: _____

Name and Address of Program Owner _____

Individual Contact _____ Title _____

Firm _____ Industry _____

Street Address _____

City, State and Zip _____ Tel: (_____) _____

(A.C.) (Number)

Additional Description (continued)		Additional Listing Forms Required

RETURN TO: PROGRAM LISTING EDITOR • SOFTWARE AGE • 2211 FORDEM AVE. • MADISON, WIS. 53701

This program is: For Sale Lease Franchise | Price: _____

Name and Address of Program Owner _____

Individual Contact _____ Title _____

Firm _____ Industry _____

Street Address _____

City, State and Zip _____ Tel: (_____) _____

(A.C.) (Number)

Additional Description (continued)		Additional Listing Forms Required

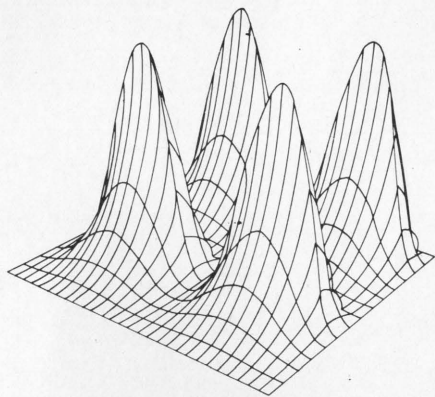
RETURN TO: PROGRAM LISTING EDITOR • SOFTWARE AGE • 2211 FORDEM AVE. • MADISON, WIS. 53701

New Plotting Software

TRIDEM*

3-dimensional perspectives, stereos and isometrics

Written in FORTRAN, the TRIDEM package expands a plotting system's capability to provide 3-dimensional, perspective or stereo plots of any data which can be expressed as a function of two variables or in XYZ coordinates. You can make machine tool design plots from many angles...create complex energy spectrums for isotope study...produce frequency and impedance curves...do optical studies...or vibration analyses...or provide insights and correlations on any subject rather than spend long hours in scrutiny of numbers on a conventional graph.



- Use with any standard plotting system.
- FORTRAN compiler and minimum core required.
- Lease price is \$2500 total for the first three years, renewable for \$100 per 3 year period thereafter.
- Complete programming documentation provided.
- Full maintenance and updating included.

COMPLØT ANTI-WORK SOFTWARE

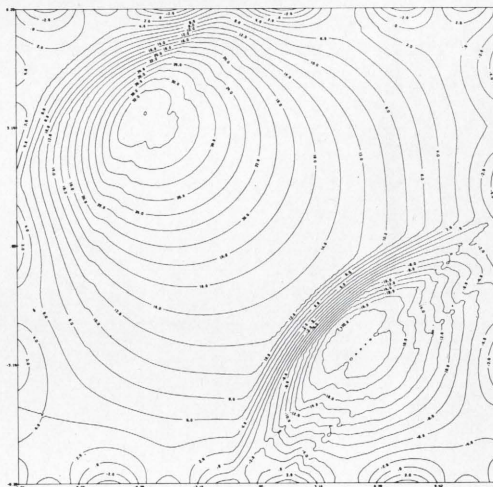
The CONTOUR-PLOT* package works in conjunction with the TRIDEM* package to produce 3-dimensional contour plots. Send for brochures.

*T.M., Houston Instrument

CONTOUR-PLOT*

30 times faster than hand drawn maps

The CONTOUR-PLOT system is a verb-orientated, inherently logical and flexible programming system to produce complex, fully-annotated contour diagrams of high graphic quality comparable to carefully hand-drawn maps—at a speed 30 times greater. An outstanding feature is the ability to manipulate surfaces stored within the system. Intersections, unions and other arithmetic operations are now possible with this contouring package. Surfaces are stored in the system and can be assessed at will. Applications include onshore and offshore geophysical studies for nuclear, radiation and thermal analyses; communication, aerospace, meteorology and other gridded data studies.



- FORTRAN IV language
- Use with Houston Instrument or any standard plotting system
- Lease Price:
 - Basic\$8500.
 - Multiple Surface Option\$2000.
 - Isometric Option\$1000.
 - Statistical Surface Fitting Option \$ 850.
 - Profile Plot Option\$ 500.

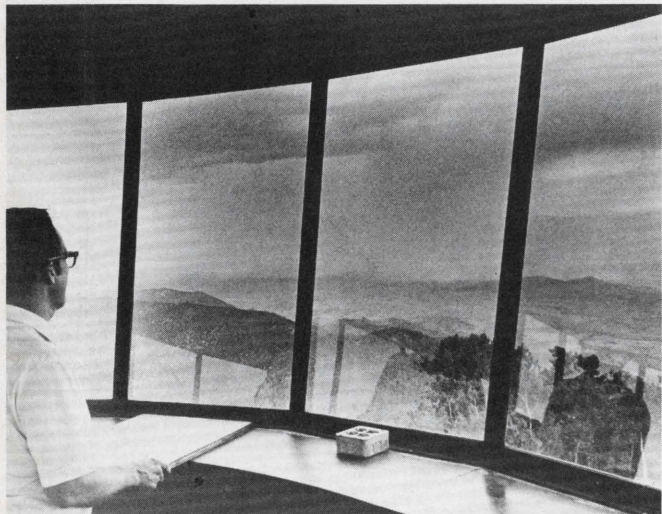
**houston
instrument**

DIVISION OF BAUSCH & LOMB

4950 TERMINAL AVENUE, BELLAIRE, TEXAS 77401
(713) 667 7403 CABLE HOINCO

**houston
instrument** | European Office Hardstrasse 235, 8005 Zurich, Switzerland
(051) 44 19 70

NEW APPLICATIONS



Scientists at Langmuir Laboratory, which is just west of Socorro, New Mexico, are trying to determine the causes of thunderstorms and the associated lightning and rain. The Laboratory, which is supported primarily by the National Science Foundation, sits atop a 10,600-foot peak in the Magdalena Mountains where thunderstorms occur almost daily during the summer and autumn.

Information from the cumulonimbus (thundercloud) clouds is obtained and fed into an IBM System/360 Model 44. In the brief course of a lightning bolt, the IBM system shows what all the sensing devices record. Readings include temperature, pressure, water content, heat energy, electrical energy, thunder intensity and several other scientific measurements.

There are several methods being used by the scientists to obtain further information from the thunderheads. One specialist fires instrumented rockets into the thunderheads to measure the electrical fields inside the storms. The tips of the rockets contain delicate miniaturized electronic measuring devices and transmitters which broadcast the readings back for processing.

Another group at Langmuir has stretched a thick 7,000 foot steel cable between two mountain peaks. Lightning attracted to the cable is analyzed by the system. Scientists also use the cable coupled with a 100-thousand volt electrical generator to induce electrical changes in thunderclouds—by forcing man-made electrical charges into the clouds.

Several scientists, using a long tube held aloft by air pressure and a balloon, blast electrically-charged smoke particles into

the bases of the clouds. By experimenting, they hope to learn how the electrical properties of clouds alter or hasten the formation of water drops.

Some scientists gather information by sending up instruments on huge helium balloons; others fly through storm cells in instrumented airplanes. One scientist flies through thunderclouds gathering air samples. By examining radon—a radioactive gas emitted from the earth—he and his associates are tracing air currents associated with the storms. Other data gathering devices include a closed circuit television network showing the appearance of storms overhead from different locations, radar to observe the rain that follows lightning, sensitive ammeters that measure the Saint-Elmo fire currents that flow into the air under thunder storms, acoustical recorders for studying the nature of thunder, and dozens of other sophisticated devices designed and built by the scientists to measure storm properties.

The scientists at Langmuir say that the computer analysis of the noise of the thunderclaps analyzed by the computer represent only one-fourth of one percent of the total energy released in the electrical discharge.

These studies continue and it is hoped that a comprehensive knowledge of thunderstorms—and the tornadoes associated with large thunderstorms—might someday enable man to control tornadoes and hurricanes.

Doctors of the University of Florida's J. Hillis Miller Medical Center are using the computer to simplify the job of diagnosing thyroid disease. Information is supplied by the patient and fed into an IBM 2741 terminal which connects, via a telephone line to an IBM System/360 Model 50 located at the University's computing center. The computer processes the data in less than a second, comparing the patient's condition with known diagnostic findings on 2,000 thyroid cases. A complete report, listing diagnostic probabilities figured mathematically and a conclusion, is printed back on the terminal within two to three minutes. When the data is not sufficient for diagnosis, the computer suggests additional laboratory tests to increase the probability of obtaining a proper diagnosis while the patient is still in the hospital. The reports are also checked by specialists who have found them accurate in

95 percent of all cases.

The computer facilitation of thyroid condition diagnoses is important because the thyroid has such a profound effect on the health and energy of the human body. Essentially the thyroid accumulates the body's scarce supply of iodine and synthesizes the substance into the hormone thyroxin. An insufficient supply of thyroxin, a condition called hypothyroidism, causes the body's machinery to slow down. Symptoms of hypothyroidism may include low body temperature, weakness, fatigue, poor appetite, and sometimes, weight gain. An excessive secretion of thyroxin, hyperthyroidism, causes physiological overactivity that can lead to severe strains on vital organs. The symptoms of hyperthyroidism include irritability, nervousness, warm feelings, frequent perspirations and heart palpitations during minor exertions.

Diagnosis is particularly important because effective treatments are so readily available. Physicians may administer synthetic thyroxin when the hormone is deficient or, for hyperthyroidism, they can surgically remove part of the overactive gland or inhibit it by radiation.

Fitzgerald, the radiation physics instructor who developed the computer program, says that although excellent tests are available to measure the body's thyroxin quantity and its circulatory action, diagnosis of thyroid disease has proven difficult because only one of many classic symptoms may be apparent in individual cases.

Bud Goode, a Los Angeles sports writer is using a computer's electronic analysis to aid him in writing a year-round sports column.

Each week Goode feeds huge amounts of statistical data on the previous week-end's football games from a UNIVAC 1004 remote input station in Los Angeles, to a UNIVAC 1108 computer in the Univac Information Services Division network of data processing centers. The computer compares the data with previous statistics on a team's performances and calculates the current effectiveness of a team on a wide variety of points.

For example, Michigan came into the Rose Bowl a slightly better team than the University of Southern California, the computer indicated, because of a superior running game, 280 yards per game on the ground compared to 216. However, the computer also noted that Southern Cal had allowed only 96 yards per game rushing.

According to the computer analysis the pass interception is football's most important play and is responsible for most upsets and furthermore, the computer notes that a team which picks off one more interception than its opponent will win 80 percent of its games.

Also, according to the computer

PROFESSIONAL PROGRAMMER/DESIGNER

This leading aerospace company has an immediate need for a real pro who is capable of designing for software systems and can offer excellent experience with 360 machine language programming. Must be able to design, execute and implement input-output systems. Ability to generate displays within the machine is desirable. Will work in our Digital Data Systems group. Highly challenging assignments, good salary and many benefits.

TO INTERVIEW, please forward your resume to Mr. A. P. Fehlber, Personnel Department, Hamilton Standard, Windsor Locks, Connecticut 06096.

An Equal Opportunity Employer

**Hamilton
Standard**

**U
A**
DIVISION OF UNITED AIRCRAFT CORPORATION

Don't look for our man in your installation.



He's Invisible.

SPRINGFIELD ASSOCIATES is the only executive management recruitment service in the EDP industry having what we call "an invisible man" in every data processing installation. Meaning that we know what's going on in each installation, and use this knowledge to better serve each individual computer specialist.

Things like knowing all the languages and configurations needed in every installation... how to put data processing specialists into computer-controlling situations... where companies are, the hours they work, the whole compensation package they offer. In short, the kind of knowledge that makes our EDP service a TOTAL EDP SERVICE — able to TOTALLY serve both companies and prospective employees in the areas of programming, systems, operations research, and EDP sales. It's the advantage of having a "man" where the action is.

We invite you to call or send your resume to:

SPRINGFIELD ASSOCIATES

51 East 42nd Street
New York, N.Y. 10017 (212) 867-8175
Suite 1508

For more information, circle No. 1 on the Reader Service Card

- Passing is more important than running in professional football, but running is more important than passing in collegiate games.
- The most decisive statistic for a pro team's standing is the number of opponent points scored per pass attempt. This measures the ability of the defensive secondary.
- During the 1969 pro football season, offense has proven to be about five percent more important than defense.
- The most important statistic in measuring a quarterback's ability is average yards per pass.

In spite of the incredible scrutiny of the variables by the computer some other factors continue to have a deciding influence. For example, in April the computer selected the New York Mets to win the National League's Eastern Division; however, in August the machine indicated that the odds were almost 100 to 1 against the New York Mets becoming the world champs.

The National Pet Registration Center in Gillette, New Jersey is attempting to prevent the tremendous numbers of "dog disappearances" that are occurring throughout the United States. Sal La Manna, head of the Registration Center, believes that about 50 percent of the two million dogs that disappeared last year were victims of dognappers who sell stolen dogs to laboratories and hospitals for use in research. La Manna's organization tattoos the dogs with the owner's social security number and registers these numbers on a UNIVAC 9200-11 computer at the Capital Data Processing Corp., Montclair, N. J. The computer also keeps an extensive information system on the traffic in lost and stolen dogs.

La Manna's system has registered about 10,000 dogs since it was started in 1968. Each dog receives a tag showing it has been tattooed and the owner is given decals for display at his home, telling potential dognappers that the animal has been marked with a permanent identification number.

La Manna has also notified state attorney generals, police departments, dog pounds, humane societies and the 1,500 laboratories across the country that use dogs as subjects of the dog registration system. The penalty for dognapping and transporting a stolen dog across state lines is a Federal Penalty of a \$5000 fine and/or five years in prison.

Besides tracking down dogs that are registered, the computer also contains confidential information on many dog dealers, including the areas in which they operate; descriptions and license numbers of the vehicles they use; and whether or not they have been involved in dognapping. Also in the computer's memory are the names and addresses of all labs using dogs in their ex-

periments and information on known locations of dog auctions.

A person anywhere in the country can request the computer's help. A woman in San Francisco recently notified the police that her beagle was missing. Although the dog wasn't registered at the National Pet Registration Center the computer provided the name of the dealer who operated in the area. The dealer, as it turned out, had the beagle.

The Ohio River Valley Water Sanitation Commission (ORSANCO) is using a computer in Cincinnati to analyze hourly water quality readings from the 981-mile-long Ohio River. Pipes, like the one shown, draw river samples and channel the water to one of the 27 monitoring stations along the river and its tributaries. Electronic devices at the stations constantly analyze the water for dissolved oxygen, temperature, pH, conductivity, oxygen reduction, potential chloride and solar radiation intensity. Data recorded at each station is then transmitted by telemeter to the ORSANCO headquarters office at Cincinnati and fed into the IBM 1130 computer.

The objective of ORSANCO is to assist the states in eliminating pollution from the river and its tributaries. When the agency was created in 1948, less than one percent of the 3.6-million people on the Ohio river were served by sewerage treatment facilities. Now there are operating facilities that serve 99.5 percent of the population. Along with the improvements in the quality of the water, the Ohio River has become a major source of recreation. Water skiing, boating and swimming have become very popular and fish are more plentiful in the river than in previous years.

In the picture a technician reviews a computer-generated report which pinpoints the sources of pollution through an identification of the condition that exists, and where along the river the condition was first detected.



TROUBLE-TRAN PRESENTS XTRAN'S ADVENTURES IN FORTRAN



By GEORGE N. VASSILAKIS

Send your ANSWER to the problems posed here in each issue to:

TROUBLE-TRAN EDITOR

software age

P. O. Box 2076
2211 Fordem Ave., Madison, Wis. 53701

You can also profit by submitting PROBLEMS for this feature. If your problem in FORTRAN programming is selected for use in this feature, you will receive \$50.00

TROUBLE-TRAN'S Objectives:

1. To have fun.
2. To promote USA Standard FORTRAN by pointing out differences and inconsistencies of existing FORTRAN Compilers.
3. To alert programmers to the physical limitations of hardware.

PROBLEM OF THE MONTH

Problem 21: Factorials Revisited

Write a program (in any language) to compute and print the exact value of 100 factorial. The answer has 158 digits and its magnitude is approximately 9.33×10^{157} .

If your answer is postmarked prior to February 10, 1970, you will be eligible for one of five \$10 prizes. Winners will be selected by a random number algorithm.

NOTE: This problem will be a good exercise for the scientific programmer who rarely gets the opportunity to work with extended precision other than FORTRAN's double precision. It will also give everyone the opportunity to think about limitations imposed by hardware.

Answer to Problem 19:

According to mail received thus far, problem 19 was the most interesting problem ever published in this column. A good indication of this is the variety of solutions I have received. I had expected to see a few FORTRAN solutions, one or two PL/1 solutions and maybe (just maybe) a COBOL solution. Instead, I have received solutions on practically every machine and language you can imagine. Would you believe a Flexowriter solution? Is this programming?

About 60% of the solutions received thus far are in FORTRAN. The non-FORTRAN solutions are dominated by PL/1. In general, this problem was rather simple for those languages and systems which operate in the interpretive mode. In a time-sharing environment, all one has to do at execution time is to get a hold of the source file and list it. The problem becomes much more difficult in a batch processing environment where the source file is not available at execution time.

Most FORTRAN solutions had used DATA statements to fill an array with hollerith information which, when printed with proper formats, generated an identical copy of the source program. Some FORTRAN users avoided the DATA statement but found other ways to initialize arrays with the needed hollerith strings.

J. B. Heidebrecht of TRW submitted a rather puzzling solution (CDC-6500 FORTRAN) which was printing the source program out of an array in labeled COMMON without putting anything into it. As it turned out, this array overlapped the compiler's input buffer which contained the source of the latest compilation. Other FORTRAN solutions ranged from a few statements to 400 statements!

The best FORTRAN solution was submitted by E. Roberts of MIT-Lincoln Labs. As you see, his FORMAT statement will output the entire source program.

```
WRITE(6,100)
STOP
100 FORMAT(6X,12HWRITE(6,100)/6X,4HSTOP/
.42H 100 FORMAT(6X,12HWRITE(6,100)/6X,4HSTOP/      ,(/5X,67H.
.42H 100 FORMAT(6X,12HWRITE(6,100)/6X,4HSTOP/      ,(/5X,67H.
.)/T48,2H)/T1,5X2(21H.)/T48,2H)/T1,5X2(21H)/
. T62,10H)/6X3HEND)T1,5X2(28H.T62,10H)/6X3HEND)T1,5X2(29H)/
6X3HEND)
END
```

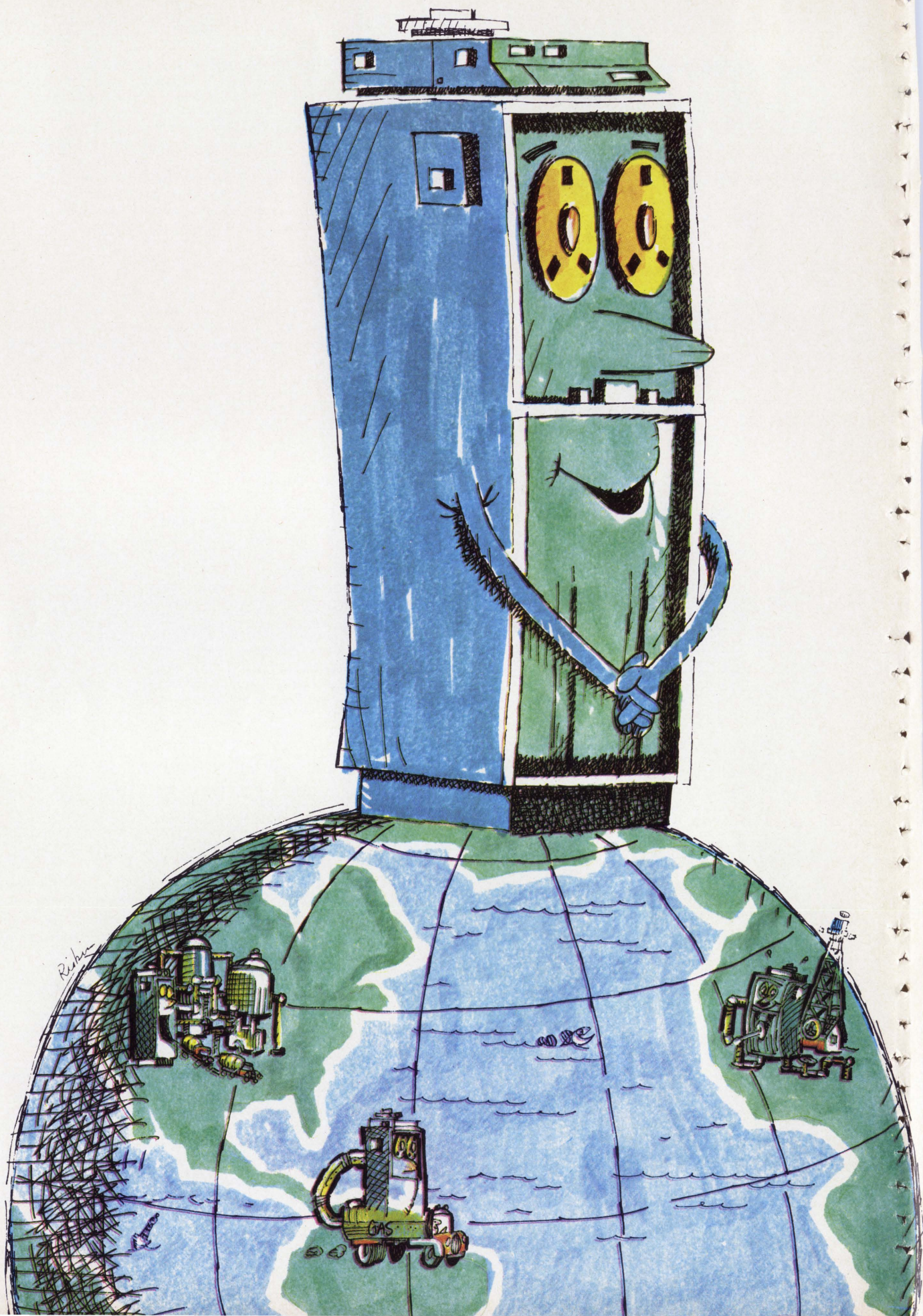
PL/1 solutions were similar to FORTRAN. COBOL solutions were lengthy but they did the job thanks to the PICTURE definition. IBM 360 Assembly Language programmers did a fine job. Congratulations to H. B. Hoyle, College of William and Mary, who surprised me with a solution which consists of 30 hexadecimal constants and the END card. According to J. R. Mashey of State College, Pennsylvania, this problem was a snap for SNOBOL4. His solution was on three cards. COMPASS programmers had an easy job, because the assembler's input buffer was available to them at execution time. A 5-Card SIMSCRIPT II solution by R. Villanueva of Simulation Associates was rather interesting because the first three cards were identical and cards 4 and 5 were also the same. APL, LISP and ADPAC solutions were very interesting.

Users of small machines such as IBM 1401, IBM 1620, Honeywell 200, etc. submitted one card programs which print themselves when the card is read and the program is started.

Another interesting solution was submitted by J. J. Saffert of Lawrence, Kansas. He used "Hull's Hypothetical Computer" simulated on a GE-635. This is defined in a book "Introduction to Computing" by T. E. Hull. Surprisingly enough, I have not seen any ALGOL solutions but I'm still hoping.

P. S.: Winners of this problem will be published next month.

XTRAN



Foxboro is doing unheard of things in computer control systems.

In England
a Foxboro multi-computer system is the heart of a direct digital control installation
that simultaneously controls nine refinery plants. In Germany
another Foxboro system controls a chemical blending job and eighty reactors. In Puerto Rico
a Foxboro data acquisition system monitors over 1,000 power plant variables while
performing logging, alarming, performance calculations and automatic turbine startup.

In Texas
a Foxboro computer control system controls 270 process loops, to provide better
fractionation and increased production of higher value petroleum products.

These are only a few of our accomplishments.
New computerized process control systems, larger, more advanced and more complex,
are being developed at Foxboro now. Today.

They demand the talents, skills and dedication of a wide range of specialists. Software
systems designers, applications programmers, computer systems engineers, process control
engineers and other professionals with experience in digital process design are invited to
join us in creating these new systems.

We offer you the opportunity to change the world, around the world.

For more information, write or call Tom Bryant (617) 543-8750, Professional Placement
Office, The Foxboro Company, Dept. S, Neponset Avenue, Foxboro, Mass. 02035.

Foxboro is an equal opportunity employer.

FOXBORO*

The highest standards of professional placement ...

it made ESP the leader in EDP

Electronic Systems Personnel has been specializing in the placement of EDP personnel for over 10 years. Occasionally we boast that we are the unchallenged leader in our field. We proudly point to our 22 offices in major cities, serving over 35,000 EDP installations. And we state, rather immodestly, (but truthfully) that every year we help to advance the careers of thousands more EDP people than our competitors.

But these things, after all, are only the results of our real achievement. It is our attitude, our unswerving belief that we must provide our clients with the very finest services possible, professionally executed in accordance with the highest standards of business ethics.

Whether you're an EDP candidate client, or an EDP company client, you must be completely satisfied with our services. That is our only guarantee of continued EDP personnel placement leadership.

Chicago, Ill.	(312) 641-6440
Cleveland, Ohio	(216) 241-0325
Denver, Colo.	(303) 892-1223
Detroit, Mich.	(313) 872-7855
Hamilton, Canada	(416) 525-8520
Kansas City, Mo.	(816) 421-4200
Los Angeles, Cal.	(213) 388-3205
Los Angeles, Airport	(213) 641-3770
Minneapolis, Minn.	(612) 338-6714
Montreal, Canada	(514) 878-1741
New Orleans, La.	(504) 522-3505
Orange, Cal.	(714) 543-9366
Philadelphia, Pa.	(215) 561-4720
Phoenix, Ariz.	(602) 279-7343
Pittsburgh, Pa.	(412) 391-6450
Portland, Ore.	(503) 226-6755
St. Louis, Mo.	(314) 621-9000
San Diego, Cal.	(714) 239-0811
Seattle, Wash.	(206) 455-1555
Sherman Oaks, Cal.	(213) 986-0500
Toronto, Canada	(416) 964-9111
Washington, D.C.	(202) 833-8040



ELECTRONIC SYSTEMS PERSONNEL



S/A market place

where you can reach ^{125,000} programmers, mathematicians, analysts and EDP managers

RATES

Classified—75¢ per word, minimum order \$7.50. Blind ads are an additional \$10.00. Payment must accompany copy.

Display Classified—One inch by one column, \$75.00. Column width is 2 1/4". Help wanted and employment services ads will be accepted in the classified section. Ads of 1/8 page or more will be listed in the Advertisers' Index, and will qualify for the free resume service.

Closing Date—the 10th of the month preceding (i.e. May issue closes April 10th). Send order and remittance to:

software age

Classified Department
P. O. Box 2076, Madison, Wisconsin 53701

EMPLOYMENT AGENCIES

100% FREE TO APPLICANTS. We do not place clients in jobs, we only place clients in career positions. Among our services are, in-depth counseling, contact with progressive companies using data processing services in Southern California, and instruction in the basic technology for effective interviewing and career advancement. We have many current opportunities in commercial programming, Systems Analysts, Software Programming, Diagnostic Programming, Systems simulation. Salaries range from \$7,000 to \$20,000. Call or send your resume to: Jim Coleman, EMPLOYERS CENTRAL, INC., 3600 Wilshire Blvd., L. A. 90005. Phone (213) 381-7662 or (714) 523-7820.

FORTUNE 500 CORPORATION seeks COBOL/BAL programmers. Opportunity for systems to \$16M. RUSSO Associates, 756 7th Ave., NYC 10019 (212) 757-2850.

PRODUCTS

A COMPREHENSIVE MANUAL on how to write an effective EDP resume, plus 6 successful samples. Send \$4.25 to K & H ASSOCIATES, Resume Specialists, P. O. Box 265, Horseheads, N. Y. 14845.

Exceptional offer to sell a recently purchased PDP-9 with DEC tape control and transports including these additional **factory-packaged** peripherals: Memory module, Mag tape controller, 7-Track transports, A/D multiplexer, Relay buffers. This complete package features great flexibility for data acquisition and control systems. For details call 212-261-0331/0710.

PROGRAMMING AIDS for 3rd generation analysts: HEXADDER \$15, HEX-a-rule \$5, free catalog HEXCO, Dept. SA, Box 55588, Houston, Texas 77055.

CONVERT NOW contact Atlantis Enterprises, P. O. Box 1501, Sunnyvale, Calif. 94086.

Watch for
FREE
computer
program
listings . . .
coming in
February
software age

CLASSIFIED ADVERTISING ORDER FORM

1	2	3	4	5
6	7	8	9	10
11	12	13	14	15
16	17	18	19	20
21	22	23	24	25
26	27	28	29	30
31	32	33	34	35

_____ Words = \$ _____

Blind Ad \$10.00 Insert _____ time(s) Total Enclosed \$ _____

NAME _____

ADDRESS _____

CITY _____ STATE _____ ZIP _____

Signature _____

WORD COUNT: Includes name and address (unless blind ad). The name of the city (Des Moines), state (New York) and zip code are counted as a total of two (2) words. Each abbreviation, initial, single figure or group of figures or letters count as a word. Symbols such as 35mm, 'COD, AC, etc. count as a single word. Hyphenated words count as two (2) words.

Make Profits for Your Company
and **MORE MONEY FOR YOURSELF!**

... ENROLL in North American's New
**HOME STUDY COURSE in
Systems & Procedures**

Sponsored by the
**ASSOCIATION FOR
SYSTEMS MANAGEMENT**

We'll Send You This Fact-Filled
CAREER OPPORTUNITY BOOKLET FREE!

North American Correspondence Schools has guided thousands of ambitious men and women to success through its accredited Home-Study Courses in many fields.



NOW NORTH AMERICAN ANNOUNCES its new 50-lesson Course in Systems & Procedures. Written and edited with the help of acknowledged leaders in the systems and procedures field and sponsored by the Association for Systems Management, this is a complete, comprehensive, authentic and up-to-date correspondence course on systems and procedures. The cost is less than \$400.00 cash. Low monthly tuition payment plans available. If you are *seriously* interested in investigating this Course, write for **FREE** fact-filled **CAREER OPPORTUNITY BOOKLET**, plus full details on North American School of Systems & Procedures. There's no cost or obligation, now or ever. No salesman will call. Write today!

Accredited Member, National Home Study Council.



SPECIAL DISCOUNTS AVAILABLE for Multiple Enrollments from the same Company

For Training / Re-Training INDUSTRY PERSONNEL... North American's Course in systems and procedures is designed for those now in Systems Departments who want to broaden, brush up on or "fill in gaps" in their knowledge of the subject... for companies—both large and small—who desire to train their own personnel in systems and procedures... and for beginners who desire a knowledge of systems and procedures.

NORTH AMERICAN SCHOOL OF SYSTEMS & PROCEDURES
Dept. 3631, 4401 Birch Street, Newport, California 92660

TRW OPPORTUNITIES FOR SYSTEMS ANALYSTS AND PROGRAMMERS

TRW is a diversified \$1.5 billion international company with over 80,000 employees at more than 300 locations around the world.

TRW's software activities are concentrated in the Software and Information Systems Division of its Systems Group at Space Park in Redondo Beach near Los Angeles Airport, at its new facility in Sunnyvale, California, and in Washington, D.C.

A major factor in today's growing software market, TRW's Software and Information Systems Division did more than \$75 million in software business last year. Continued growth has created these outstanding opportunities:

SYSTEMS ANALYSTS

Systems/Operations Analyst

Perform systems and operational analysis of computer-based military and or civil systems and develop functional logic for these systems through analysis, modeling and simulation.

Computer Systems Analyst

Experience in systems analysis and Discrete Time Simulations. The successful applicant will be expected to define computer simulations and direct the development effort.

Systems Modeling Analyst

Modeling of Computer Systems. Experience in Operations Research, problem solving and model building, preferably of computer systems. Familiarity with one or more Discrete Time Simulation languages, queueing theory, and its application in modeling computer systems is desired.

Computer Display Systems Analyst

Analyze and define computer and display systems requirements and perform trade-off studies for real-time and near real-time command and control center operations. Experience in computer and display systems. Hardware design or system programming experience desirable.

Data Systems Analyst

Development of algorithms and computer programs for high speed, large volume real-time/off-line data handling, processing and data management systems. Applications to earth resources, tactical/strategic communications command and control and secure systems data handling. Familiarity with medium/large scale computing systems, special purpose data processing equipment, advanced software applications, and Air Force configuration management desired.

Signal Processing Analyst

Development of computer-based systems and software for real-time/off-line applications in areas of imagery, radar, sonar, IR, seismic, and communications signal processing, detection and information extraction. Knowledge of communication systems, control center, signal techniques and digital filtering.

Command and Control Systems Analyst

Design, develop and test software associated with command and control center operations. Experience in real-time data processing software for military or commercial systems. Experience in an operational center desired.

Scientific Analysts

Analysis and programming in the areas of optimization, numerical analysis, simulation development, data analysis and reduction plus parametric engineering studies and plotted output. Other duties include problem definition, scheduling of activities and report preparation. Must have previous experience on IBM 360. Knowledge of FORTRAN is required. Degree is mandatory.

Above positions require one or more years experience and a BS, MS or PhD in Math, Physics, Engineering or Computer Science.

SCIENTIFIC PROGRAMMERS

Computer Simulation Programmer

Develop interpretive computer simulation programs for special and general purpose digital computers. Experience in assembly language on IBM 7094 or CDC 6600 is necessary.

Jovial Programmer/Analyst

Design, develop and test programs for command and control, mission planning, data correlation and scientific data file management. Working knowledge of Jovial and experience with satellite command and control.

Real-Time Assembly Language Programmer/Analyst

Program requirements definitions; computer evaluation and selection; design, implementation and test of assembly language program systems for real-time processing of telemetry and command data. Support of spacecraft/payload integration and test, mission data acquisition and monitoring, and command and control. Experience in assembly language programming for IBM 360, IBM 1800, SIGMA 5/7, SEL 810/840 or similar computers.

Scientific Programmer/Analyst

Design, develop and test programs for trajectory and guidance simulations, tracking and orbit determination, statistical error analysis and operations research. Experience in assembly language or FORTRAN on IBM 360, CDC 6000 or IBM 7094 systems.

Systems Programmers Teleprocessing

To design and implement teleprocessing routines to support slow and high speed terminals and some computer-to-computer operations. Basic requirements include familiarity with teleprocessing and OS assembly language. Minimum (2) years experience.

Time-Sharing

To provide support to professional programmers and engineers using time-sharing services. Requirements include knowledge of FORTRAN or basic and a BS degree. Familiarity with OS is desirable. Minimum (1) year experience.

The above positions require one or more years experience plus a BS or MS in Engineering, Computer Science, Math or Physical Science.

You may discuss these opportunities with T.S. Swanson in Washington, D.C.: Phone (202) 265-1616; with George Lankow in Houston: Phone (713) 488-3530, ext. 2951; with Bob Elliott in Los Angeles: Phone (213) 679-8711, ext. 68838, or send your resume to Professional Placement, Room P6101-A, TRW Systems Group, One Space Park, Redondo Beach, California 90278. TRW is an equal opportunity employer.

TRW®

The Systems Group is a major operating unit of TRW, Inc., where more than 80,000 people at over 300 locations around the world are applying advanced technology to products, systems, and services for commercial, industrial and government markets.

software age

CONFIDENTIAL INQUIRY

Your original copy of this form will be retained at the offices of SOFTWARE AGE and will be used for no other purpose than to notify the specific firms which you have checked (on the reverse side) of your interest.

TYPE OR PRINT CLEARLY FOR PHOTO REPRODUCTION

JOB DESIRED: _____

List computer hardware knowledge (names of systems, tape, disk, terminals, etc.): _____

Programming specialties and years of experience (commercial, scientific, theoretical, experimental, analog, etc.): _____

Systems programming on which you have had development experience (compilers, assemblers, executives, monitors, O.S., etc. Indicate for what computer): _____

Programming languages used and extent of experience (COBOL, FORTRAN, etc.): _____

Applications programmed (aerospace, banking, insurance, math subroutines, compilers, etc.): _____

Systems analysis experience (card design, flow charting, operation analysis, etc.): _____

EDP management experience (include years and number of people reporting to you): _____

SALARY: _____ DATE OF AVAILABILITY: _____
(current) (desired)

EDUCATION: Indicate major as well as degree unless self-explanatory.

Degrees _____	_____	_____
Years _____	_____	_____
Schools _____	_____	_____

EMPLOYMENT: Indicate present employment and previous jobs below.

Employer _____	_____	_____
City _____	_____	_____
Years _____ to _____	_____ to _____	_____ to _____
Title or Function _____	_____	_____

Name _____ Signature _____

Home Address _____ (city) _____ Home Phone _____

(state) _____ (ZIP code) _____ Age _____ U. S. Citizen? _____

Security Clearance _____ Location Preference _____

Marital Status _____

Military Status _____

BE SURE YOU HAVE CHECKED ON REVERSE SIDE
THE COMPANIES YOU WANT TO SEE THIS INQUIRY.
PUT FORM IN STAMPED ENVELOPE AND MAIL TO:

software age
MAGAZINE

P. O. BOX 2076
2211 FORDEM AVE., MADISON, WIS. 53701

check your interests here

Fill in the confidential inquiry form on the other side of this sheet. This form provides all the information advertisers require to screen applicants. If further information is desired, you will hear from the advertiser direct. Then, check below the boxes of those companies to which you want copies of your

form sent. Mail to SOFTWARE AGE, P.O. Box 2076, 2211 Fordem Avenue, Madison, Wisconsin 53701. (Please do not send us your own resume. We will only process this form. A new form must be filled out for each issue in which you are answering ads.)

	Page
<input type="checkbox"/> 1. Army Air Force Exchange Service	28
<input type="checkbox"/> 2. Army Air Force Exchange Service	29
<input type="checkbox"/> 3. Ashland Oil & Refining Company	30
<input type="checkbox"/> 4. Beech Aircraft Corporation	15
<input type="checkbox"/> 5. Burroughs Corporation	12
<input type="checkbox"/> 6. Foxboro Company	40 & 41
<input type="checkbox"/> 7. Hamilton Standard Div. of United Aircraft Corp. . .	37
<input type="checkbox"/> 8. Hughes Aircraft Co., Aerospace Div.	3rd Cover
<input type="checkbox"/> 9. IBM Corporation	4
<input type="checkbox"/> 10. Jet Propulsion Laboratory	2nd Cover
<input type="checkbox"/> 11. Lockheed Missiles & Space Company	19
<input type="checkbox"/> 12. National Cash Register Company, Electronics Div. .	16
<input type="checkbox"/> 13. RCA, Information Systems Div.	7
<input type="checkbox"/> 14. Sikorsky Aircraft	31
<input type="checkbox"/> 15. Singer Friden Div.	4th Cover
<input type="checkbox"/> 16. TRW Systems Group	44

EMPLOYMENT AND SEARCH AGENCIES

<input type="checkbox"/> 17. Callahan Center for Computer Personnel	17
<input type="checkbox"/> 18. Computer Personnel Agency, Inc.	10

	Page
<input type="checkbox"/> 19. Drew Personnel Placement Center	20
<input type="checkbox"/> 20. Electronic Systems Personnel	42
<input type="checkbox"/> 21. Everett Kelley Associates, Inc.	15
<input type="checkbox"/> 22. Gilbert Lane Personnel	19
<input type="checkbox"/> 23. LaSalle Associates	18
<input type="checkbox"/> 24. Lawrence Personnel	21
<input type="checkbox"/> 25. RSVP Services	20
<input type="checkbox"/> 26. Sheridan Associates	10
<input type="checkbox"/> 27. Source EDP	6
<input type="checkbox"/> 28. Springfield Associates	37

PRODUCTS AND SERVICES

Anaheim Publishing Company	14
Graphic Systems	18
Houston Instrument	35
The Library of Computer & Information Sciences	22
Magnetic Aids, Inc.	5
North American School of Systems & Procedures	43
Wassell Organization, Inc.	17

I do not now receive S/A. Please send me information on how I may receive a FREE subscription.

.....
Name

.....
Street Address

.....
City

.....
State

.....
Zip Code



software age

P. O. Box 2076
2211 Fordem Avenue
Madison, Wisconsin 53701