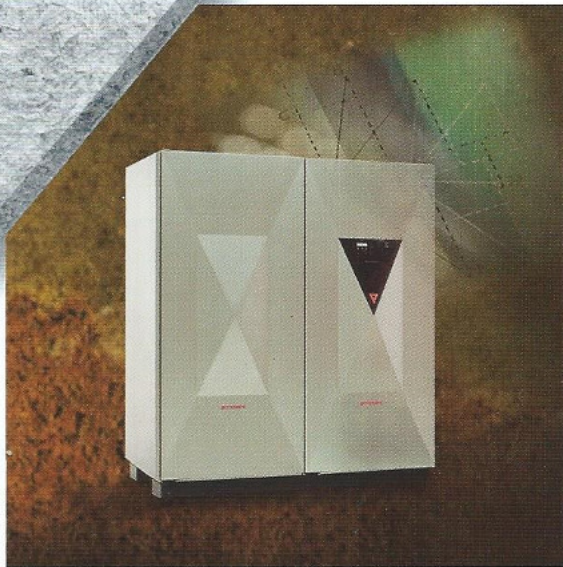




# Millennium™ Global Servers 700 Series



- ▶ **More productive MIPS for exceptional system utilization**
- ▶ **Topflight performance for mission-critical applications**
- ▶ **Availability that keeps up with outstanding performance**
- ▶ **Flexibility that puts the customer in charge**
- ▶ **S/390 compatibility with innovation**

## Specifications

### Advanced technology and design

System on a board	CPUs, memory, I/O processors
Processor design	Up to 12 CPUs
Connectivity	Up to 512 channels
QuickAvailability™	Dynamic: QuickCapacity™, QuickSwitch™, QuickChannels™ QuickMemory™
ConServ™ (concurrent service)	Firmware, channels, and fans
Multiple Domain Feature™	up to 15 domains
Coupling Domain™	Parallel Sysplex coupling facility functionality
IC technology	.25-micron complementary metal oxide semiconductor (CMOS)
Level 1 cache (high-speed buffer)	256 KB per CPU, split equally between instructions and data
Level 2 cache	2 MB per CPU, up to 22 MB shared

### Physical characteristics

	Minimum Configuration	Maximum Configuration
Floor space without service clearance	16.1 ft <sup>2</sup> 1.5 m <sup>2</sup>	32.3 ft <sup>2</sup> 3.0 m <sup>2</sup>
Floor space with service clearance	43.0 ft <sup>2</sup> 4.0 m <sup>2</sup>	86.1 ft <sup>2</sup> 8.0 m <sup>2</sup>
Approximate weight	2,200 lb 1,000 kg	3,960 lb 1,800 kg
Approximate power requirements (50/60 Hz; 200-240 Vac, 380-415 Vac; 3 phase)	2.24 kVA	6.47 kVA
Approximate heat dissipation	7.27 kBTU/hr	20.98 kBTU/hr
Temperature requirements*	50° F - 90° F 10° C - 32° C	
Humidity requirements	20% - 80%	

\* At altitudes above 5,000 ft (1,525 m), lower the maximum underfloor and room temperature 3.6° F for every 1,000 ft (2° C for every 305 m), up to 7,000 ft (2,135 m). For higher altitudes, consult an Amdahl representative.

\*\* Available in Internal Coupling Server (ICS) configurations only.

### Capacity and upgrade paths

Model	Capacity Range	Upgrade to
GS715**	1.00	GS725, 732, 735, 745, 755, 765, 775, 782, 785, 795, 7X5, 7Y5, 7Z5
GS725	1.77 - 1.96	GS732, 735, 745, 755, 765, 775, 782, 785, 795, 7X5, 7Y5, 7Z5
GS732	1.96 - 2.17	GS735, 745, 755, 765, 775, 782, 785, 795, 7X5, 7Y5, 7Z5
GS735	2.54 - 2.81	GS745, 755, 765, 775, 782, 785, 795, 7X5, 7Y5, 7Z5
GS745	3.28 - 3.62	GS755, 765, 775, 782, 785, 795, 7X5, 7Y5, 7Z5
GS755	3.98 - 4.40	GS765, 775, 782, 785, 795, 7X5, 7Y5, 7Z5
GS765	4.66 - 5.15	GS775, 782, 785, 795, 7X5, 7Y5, 7Z5
GS775	5.30 - 5.85	GS782, 785, 795, 7X5, 7Y5, 7Z5
GS782	5.66 - 6.26	GS785, 795, 7X5, 7Y5, 7Z5
GS785	5.90 - 6.52	GS795, 7X5, 7Y5, 7Z5
GS795	6.48 - 7.17	GS7X5, 7Y5, 7Z5
GS7X5	7.07 - 7.81	GS7Y5, 7Z5
GS7Y5	7.61 - 8.41	GS7Z5
GS7Z5	8.15 - 9.00	—

### Supported operating system releases\*\*\*

OS/390 1.1.0, 1.2.0, 1.3.0, and 2.4.0  
 MVS/ESA 4.2.0, 4.2.2, 4.3.0, 5.1.0, 5.2.0, and 5.2.2  
 VM/ESA 1.2.2, 2.1.0, and 2.2.0  
 VSE/ESA 2.1.0 and 2.2.0  
 TPF 4.1 and TPF HPO 4.1  
 UTS 2.1.x and 4.x

### Memory\*\*\*\*

Minimum	Maximum	Configurations
512 MB	16 GB	512 MB, 1 GB, 2 GB, 4 GB, 6 GB, 8 GB, 12 GB, and 16 GB

### Channels

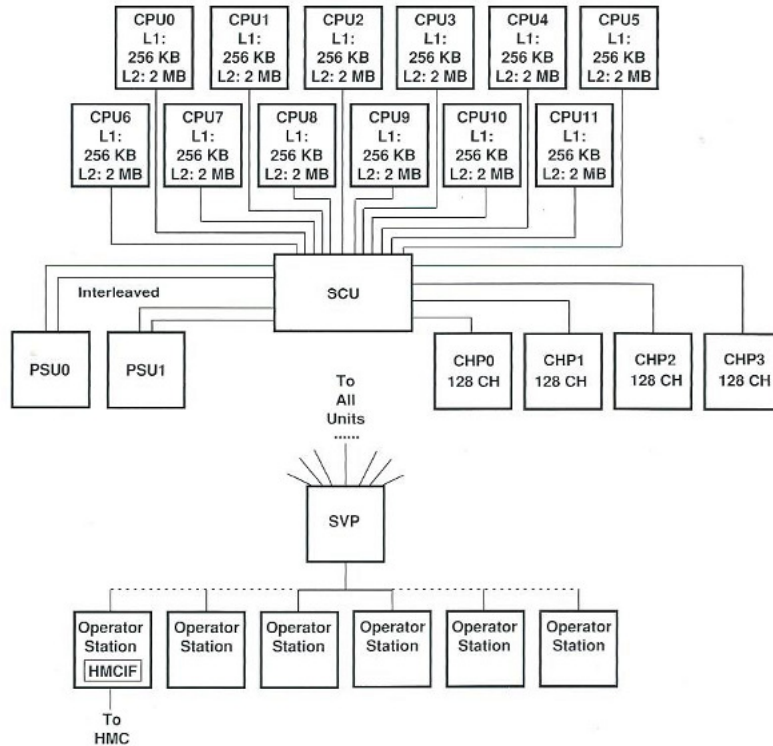
	Minimum Configuration	Maximum Configuration	Increments
Total	32	512	—
ESCON	0	512	8
Parallel	0	192	4
Coupling Links	0	64	1
OSA	0	32	1

\*\*\* Support for new releases of these operating systems will be added as they become available.

\*\*\*\* Memory is customer definable into main and expanded storage.

## Specifications

### System organization\*



CH:	Channel	L1:	Level 1 Cache
CHP:	Channel Processor	L2:	Level 2 Cache
CPU:	Central Processing Unit	PSU:	Processor Storage Unit
HMC:	Hardware Management Console	SCU:	System Control Unit
HMCIF:	HMC Interface Feature	SVP:	Service Processor

\*Level 2 cache is shared.

### Worldwide Headquarters

Amdahl Corporation  
1250 East Arques Avenue  
Sunnyvale, CA 94088-3470  
United States of America  
Tel: (408) 746 6000  
Fax: (408) 746 3243  
Internet:  
<http://www.amdahl.com>

### North America

#### United States of America

Tel: (800) 223 2215  
Fax: (800) 452 3509

#### Canada

Tel: (416) 510 3111  
Fax: (416) 510 3353

### Europe

(covering Austria, Belgium, Denmark, France, Germany, Ireland, Italy, Luxembourg, Netherlands, Norway, Portugal, Spain, Sweden, Switzerland and the United Kingdom).

### For your local Amdahl office please access:

[www.amdahl.com/europe/offices](http://www.amdahl.com/europe/offices)

### or email:

[Amdahl\\_In\\_Europe@amdahl.com](mailto:Amdahl_In_Europe@amdahl.com)

### South Africa

Johannesburg  
Tel: +27 11467 0710  
Fax: +27 11467 0740

### Asia

Amdahl Asia Services Sdn.Bhd  
Tel: +60 3 794 7233  
Fax: +60 3 794 9911

### Australia and New Zealand

Amdahl Pacific Services Pty Ltd  
ACN 003 839 503  
Tel: +61 2 9561 9999  
Fax: +61 2 9561 9811

Capacity relationships shown in this document are based on measurements and projections made in a controlled single-image environment. Measured workloads are approximations of customer production workloads. Results based on specific customer workloads will vary depending on the applications and operating environments, including Parallel Sysplex. Individual customer results will vary and may not equal the ratios stated here.

Amdahl and UTS are registered trademarks and Millennium, QuickAvailability, QuickCapacity, QuickSwitch, QuickChannels, QuickMemory, Multiple Domain Feature, ConServ and Coupling Domain are trademarks of Amdahl Corporation. S/390, VM/ESA, and ESCON are registered trademarks and Parallel Sysplex, MVS/ESA, OS/390, and VSE/ESA are trademarks of IBM Corporation. All other trademarks and product names are property of their respective owners.

The information in this document may be superseded by subsequent documents. For details regarding delivery of specific products, features, and services, contact your local Amdahl representative.

© 1998 Amdahl Corporation.

All rights reserved. Printed in the U.S.A.

MM002513-US-002 [1:7.5] 2/98

309-024/8699