

Multi-Topology Portable Sniffer Analyzer

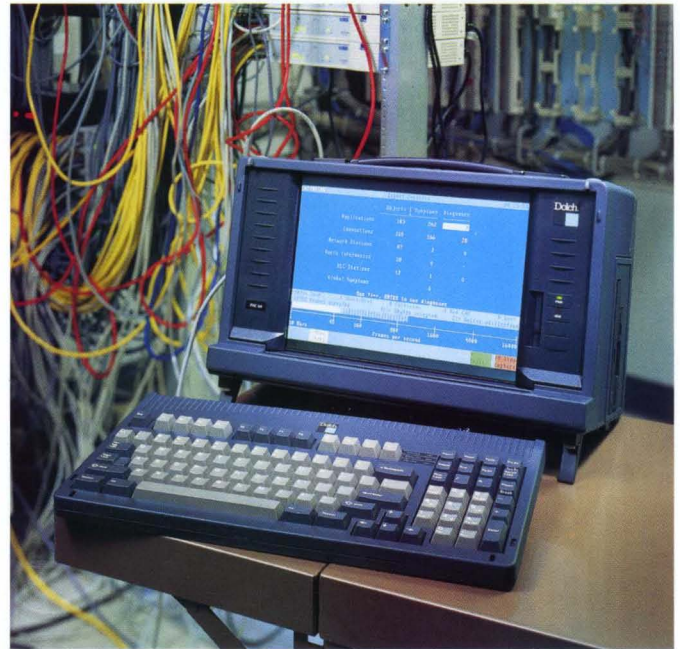
The PAC 64™ is an advanced 200 MHz Pentium® processor-based portable computer platform designed by Dolch and certified by Network General Corporation. The PAC 64 is directed at NGC's new PCI FDDI, ATM and Fast Ethernet (100 Mbps) version 5.0 Sniffer® analyzer tools. Combining ISA and high performance PCI bus architectures, the PAC 64 also supports Ethernet (10 Mbps), Token Ring and Internetwork applications.

Ultra-Powerful Portable Platform

The blazing performance of a Dolch PAC 64 begins with its state of the art 200 MHz Pentium® CPU. Add 32 MB of fast EDO (Extended Data Output) RAM and a 1 GB EIDE Hard Drive combined with a 64-bit PCI local bus, enhanced parallel port and on-board high-speed 16550 UARTs and you have the world's most powerful Pentium portable — bar none.

The new Sniffer Analyzer Version 5.0 now supports up to 64 MB of RAM, further enhancing operating speed and performance. In addition to being materially faster and more durable than ordinary portables, the PAC 64 also provides the high-end system resources that allow the Sniffer application to detect soft collisions in the Ethernet preamble, check cable faults in 10Base-T configurations and automatically restart after a power failure.

- Certified for Portable Sniffer Analyzers
- Complete Multi-Topology Support
- PCI – ATM, FDDI, Fast Ethernet
- ISA – Ethernet, Token Ring, Internetwork
- Powerful Pentium 200 MHz CPU
- 32 MB/64 MB EDO RAM, 1 GB HDD
- 12.1" SVGA Active Matrix Color Display



Dolch PAC 64 – Ruggedized Sniffer Platform

Dolch PAC 64 — Ruggedized Sniffer Platform

PAC 64's standard 8X slimline CD-ROM makes software loading and updating a breeze, and the new 12.1" SVGA TFT screen offers brilliant color with excellent glare resistance. Cross-flow cooling keeps internal temperatures low, protecting application cards from overheating.

Field Tough and Rugged

The PAC 64 is designed to take the daily abuse common to field applications. IsoGuard™ multi-point mounting elements "lock-down" critical components while the extremely tough cross-linked polymer casework cradles the monocoque aluminum-alloy chassis to isolate shock and vibration from internal elements.

About Network General

Network General Corporation is a leading provider of fault and performance management solutions for enterprise networks worldwide. Founded in 1986, the company has extensive experience in complex heterogeneous network environments and offers a comprehensive suite of products and services designed to provide total network visibility. World headquarters are located in Menlo Park, California.

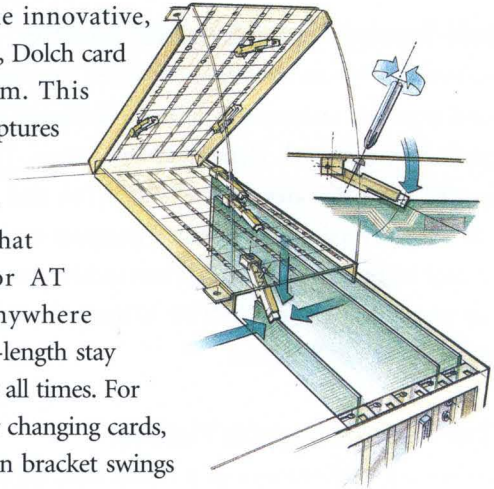
Massive Expansion

For over ten years, expansion capability has been the hallmark of a Dolch PAC portable. Combining high-speed PCI and ISA for a total of five open expansion slots, the PAC 64 is designed and specifically configured for optimum performance with Network General's FDDI, Fast Ethernet and ATM Sniffer analyzers.



Add-in Card Retention

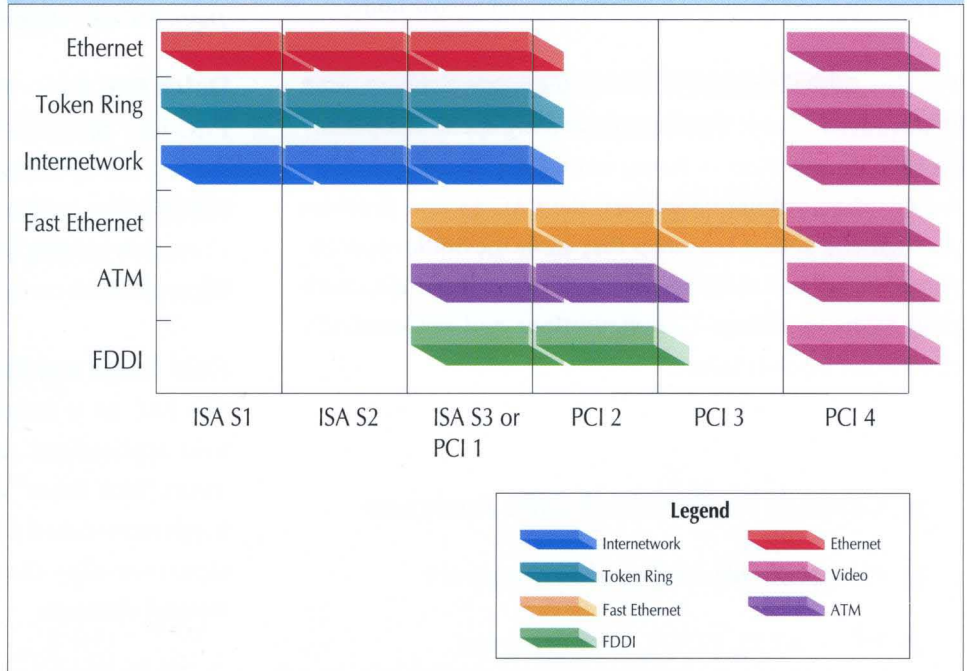
PAC 64 uses the innovative, (patent pending), Dolch card retention system. This unique device captures each add-in board individually, ensuring that cards of XT or AT height and anywhere from half to full-length stay firmly in place at all times. For ease of adding or changing cards, the card retention bracket swings away with the removal of a single screw.



SPECIFICATIONS

Processor	Pentium
Speed	200 MHz
RAM Cache	16 KB/512 KB
Bus Structure	16-bit ISA 64-bit PCI
Open Slots	2 ISA, 2 PCI 1 Shared ISA/PCI
RAM-standard	32 MB EDO
RAM-maximum	64 MB EDO
Hard Drive-standard	1 GB EIDE
Hard Drive-optional	2 GB EIDE
Floppy Drive	1.44 MB, 3.5"
CD-ROM	Slimline 8X
Keyboard-standard US	101 Keys
Keyboard-optional	102 Keys (International)
Flat Panel Display	12.1" Active Matrix Color
Resolution-internal	800 x 600
Resolution-external	640 x 480 800 x 600 1024 x 768
Colors	16.7 million
Contrast Ratio	100 : 1
Power Supply	250 Watts
Dimensions	15.7" x 9.3" x 8.25"
Weight	20 lb

Available Slots According to Topologies



Why wait! Call Dolch Computer Systems today.
1-800-538-7506

Corporate Headquarters

Dolch Computer Systems, Inc.
 3178 Laurelview Court
 Fremont, CA 94538
 TEL: (510) 661.2220
 FAX: (510) 490.2360
 Web Site: <http://www.dolch.com>

United Kingdom Operations

Dolch Computer Systems (U.K.) Ltd.
 14 Cochran Close, Crownhill
 Milton Keynes, MK8 0AJ, UK
 TEL: (+44) 1908.263.622
 FAX: (+44) 1908.263.220
 E-MAIL: sales@dolch.co.uk

German Operations

Dolch Computer Systems GmbH
 Haidgraben 1C
 D-85521 Ottobrunn
 Germany
 TEL: (+49) 89.609.7848
 FAX: (+49) 89.608.3856

