

General Purpose Register Diagnostic

Reference Manual

**For HP 12551B/12554A/12566B/C
12589A/12597A/12602B/12849A/
12875B/12930A Interfaces and HP
1000 Series Computers.**

ABSOLUTE BINARY PROGRAM NO. 24391-16001
DATE CODE 1813

PRINTING HISTORY

The Printing History below identifies the Edition of this Manual and any Updates that are included. Periodically, Update packages are distributed which contain replacement pages to be merged into the manual, including an updated copy of this Printing History page. Also, the update may contain write-in instructions.

Each reprinting of this manual will incorporate all past Updates, however, no new information will be added. Thus, the reprinted copy will be identical in content to prior printings of the same edition with its user-inserted update information. New editions of this manual will contain new information, as well as all Updates.

To determine what software manual edition and update is compatible with your current software revision code, refer to the appropriate Software Numbering Catalog, Software Product Catalog, or Diagnostic Configurator Manual.

First Edition	Aug 1978	
Update 1	Apr 1982	Adds 12566C strapping
Reprint	Apr 1982	Update 1 incorporated

NOTICE

The information contained in this document is subject to change without notice.

HEWLETT-PACKARD MAKES NO WARRANTY OF ANY KIND WITH REGARD TO THIS MATERIAL, INCLUDING, BUT NOT LIMITED TO, THE IMPLIED WARRANTIES OF MERCHANTABILITY AND FITNESS FOR A PARTICULAR PURPOSE. Hewlett-Packard shall not be liable for errors contained herein or for incidental or consequential damages in connection with the furnishing, performance or use of this material.

Hewlett-Packard assumes no responsibility for the use or reliability of its software on equipment that is not furnished by Hewlett-Packard.

This document contains proprietary information which is protected by copyright. All rights are reserved. No part of this document may be photocopied, reproduced or translated to another program language without the prior written consent of Hewlett-Packard Company.

CONTENTS

<p>Section I Page</p> <p>INTRODUCTION</p> <p>General 1-1</p> <p>Required Hardware 1-1</p> <p>Required Software 1-4</p> <p>Section II Page</p> <p>PROGRAM ORGANIZATION</p> <p>Organization 2-1</p> <p>Test Control and Execution 2-1</p> <p>Message Reporting 2-2</p> <p>Diagnostic Limitations 2-3</p> <p>Section III Page</p> <p>OPERATING PROCEDURE</p> <p>Operating Procedures 3-1</p> <p>Running the Diagnostic 3-4</p> <p>Test Selection 3-6</p> <p>Restarting 3-6</p> <p>Section IV Page</p> <p>DIAGNOSTIC PERFORMANCE</p> <p>Test Description 4-1</p> <p style="padding-left: 20px;">Basic I/O Test, TST00 4-1</p>	<p>Pattern Test, TST01 4-3</p> <p>Command Test, TST02 4-3</p> <p>Data Buffer Test, TST03 4-3</p> <p>Control Signals Test, TST04 4-3</p> <p>Input/Output Test, TST05 4-4</p> <p>Multi-Line Operation Test, TST06 4-4</p> <p>Dialer Turn On, Wait, Turn Off Test, TST07 4-4</p> <p>Command/Status and Data Test Without STC, TST08 4-4</p> <p>Command/Status and Data Test With STC, TST09 4-4</p> <p>Command Channel Test, TST10 4-5</p> <p>Data Channel and Power On Circuit Test, TST11 4-5</p> <p>Pseudo Operator Design Test, TST12 4-5</p> <p>Processor Interconnect Kit 4-6</p> <p>Error Information Messages/ Halt Codes 4-7</p> <p>Appendix A Page</p> <p>REQUIRED JUMPER INSTALLATIONS A-1</p> <p>Appendix B Page</p> <p>TEST CONNECTIONS B-1</p>
--	---

ILLUSTRATIONS

Title	Page
Operating Procedure Flowchart	3-2

TABLES

Title	Page	Title	Page
Interface Board, Test Execution and Test Connector	1-2	Switch Register Options	3-5
Approximate Execution Time of Each Test on an M-Series Computer	2-2	Test Selection Summary via A-Register	3-5
Select Code and Interface Type Entered via S-Register	3-4	Halt Code Summary	4-7
		Error and Information Messages and Halt Codes	4-8

1-1. GENERAL

This diagnostic tests several types of interface boards used with the HP 1000 M/E/F-Series Computers.* A list of the interfaces that can be tested by this diagnostic, the tests executed and the required test connectors are listed in table 1-1.

1-2. REQUIRED HARDWARE

The following hardware is required:

- a. An HP 1000 M/E/F-Series Computer with at least 4K of memory.
- b. One of the interface cards listed in Table 1-1. Each of the interfaces that may be tested by this diagnostic has circuit jumpers that can be installed in different positions, according to the specific application of the card. The normal installation positions for those jumpers are described in the *Operating and Service Manual* for the particular card. However, when this diagnostic program is used to test a given card, some of the normal jumper installations may have to be changed temporarily while the tests are run or between the execution of some tests. At the end of the diagnostic they must be returned to the position required by the specific application. The various jumper installations allowed for the diagnostic tests are listed in appendix A of this manual.
- c. The appropriate test connector must be installed on all cards that are to be tested with this diagnostic (see Note for exceptions). Table 1-1 lists the required test connector for each of the interface cards.
- d. A diagnostic input device used only for loading the configurator and the diagnostic.
- e. A console device with interface for message reporting (recommended but not required).
- f. When running diagnostics on an HP 12930A Universal Interface board, an HP 12777A, Priority Jumper board is required.

*Except where otherwise noted, when the HP 1000 M/E/F-Series is mentioned in this manual, it includes the 21MX, 21MX M-Series, 21MX E-Series, HP 1000 M-Series, HP 1000 F-Series Computers and also applies to the 2100 A/S Computer. It does not include or apply to the HP 1000 A/L Series Computer.

Table 1-1. Interface Board, Test Execution and Test Connector

INTERFACE BOARD		TEST EXECUTION		TEST CONNECTOR
NO.	NAME	STANDARD TEST RUN	SPECIALY SELECTABLE TEST	
HP 12551B HP 12551B-001	Relay Register Relay Register with Storage Read-back	TST 00 01	TST 02 TST 12	Both boards should be tested with a special test and display connector which is not supplied with either one of the two boards. This special connector can be built by the user. The electrical lay-out is shown in Appendix B figure B-3. The connector is required to run TST 02.(See Note)
HP 12554A HP 12554A-001	16 Bit Duplex Register Positive Logic 16 Bit Duplex Register Negative Logic	TST 00 03	TST 12	Part no. 1251-0332 (supplied with board).
HP 12566B/C HP 12566B/C-001 HP 12566B/C-002 HP 12653A HP 12875B	Microcircuit Interface Ground True Microcircuit Interface Ground True, Party Line Microcircuit Interface Positive True Microcircuit Interface Special 2767A Line Printer Interface Processor Interconnect Kit	TST 00 03	TST 12	Part no. 1251-0332 (supplied with board). The user has to modify that test connector by connecting pin Z/22 to pin AA/23 via a solder joint as shown in Appendix B figure B-1. (See Note)
HP 12597A HP 12597A-001 ¹	8 Bit Duplex Register Positive Logic 8 Bit Duplex Register Negative Logic	TST 00 03	TST 12	Part no. 1251-0332 (supplied with board).
HP 12602B	Optical Mark Reader Interface	TST 00 03	TST 12	Part no. 1251-0332 (supplied with board).
HP 12849A HP 12849A-001	Controller Microcircuit Interface, Ground True Controller Microcircuit Interface, Positive True	TST 00 03 04	TST 12	Requires two different test connectors as follows: Test connector HP 12849-60003 which is supplied with the board as shown in Appendix B figure B-1 is used for TST 03. Test connector HP 12849-60004 which is supplied with the board as shown in Appendix B figure B-2 is used for TST 04.

¹The HP 12597A-002, -003, and -005 Interface diagnostics are described in the Tape Reader/Punch subsystems diagnostic manual (part number 12597-90031), although this diagnostic may be used to check just the interface cards.

Table 1-1. Interface Board, Test Execution and Test Connector (Continued)

INTERFACE BOARD		TEST EXECUTION		TEST CONNECTOR
NO.	NAME	STANDARD TEST RUN	SPECIALLY SELECTABLE TEST	
HP 12589A	Automatic Dialer Interface	TST 00 05 06 07	TST 12	ACU — test connector part no. 12589-6005 (supplied with the board).
HP 12930A	Universal Interface Bit Differential Driver	TST 00 ³ 03 08	TST 12	Part no. 12930-60013 ² (supplied with standard board 12930A).
HP 12930A-001 and -003	Universal Interface Bit Ground True Driver	09 10 11		Part no. 12930-60014 ² (supplied with ground true board 12930A-001 and -003).
HP 12930A-002	Universal Interface Kit Positive True Driver			Part no. 12930-60015 ² (supplied with positive true board 12930A-002).

² With this diagnostic release the test connectors for the three universal interface boards were modified. 12930-60013 replaces 12930-60006, 12930-60014 replaces 12930-60008 and 12930-60015 replaces 12930-60009. This diagnostic will fail in TST 11 if the old test connectors are used. The old connectors can easily be converted by the user to conform to the new ones as shown in Appendix B, figures B-4, B-5 and B-6.

³ TST 00 is executed twice, once on the data channel SC, once on the command channel SC of the 12930 UI board.

NOTE

The following 2 boards can be tested without a test connector provided the user is willing to accept certain short comings or inconveniences.

1. Relay Register Board HP 12551B and HP 12551B-01: The standard pattern test, TST 01 can be exercised without the special test connector (see paragraph 4-3). However the non-standard command test, TST 02 requires the special test connector (see paragraph 4-4).
2. Processor Interconnect Kit HP 12875B can be tested like a 12566B/C interface board in which case a test connector is required (part no. 1251-0332) or it can be tested as a processor interconnect kit with a central processor, two interconnect boards and an I/O processor (see paragraph 4-15).

1-3. REQUIRED SOFTWARE

The following software is required:

- a. The Diagnostic Configurator (part numbers listed below) is used for equipment configuration and as a console device driver.

Binary	object tape	Part No. 24296-60001
Manual		Part No. 02100-90157

- b. General Purpose Register Diagnostic binary object tape Part No. 24391-16001.

The Diagnostic Serial Number (DSN) for this diagnostic resides in memory location 126 (octal). The DSN is 143300 (octal).

NOTE

S-REG and Switch Register, P-REG and P-register, etc., used in this manual are synonymous.

PROGRAM ORGANIZATION

SECTION

II

2-1. ORGANIZATION

This diagnostic program consists of an Initialization and Control section, 12 tests, and a Pseudo Operator Design section (Opdesign). The Initialization and Control section accepts the select code, board type, and options required by the tests. The tests are named as follows:

- Basic I/O (Flag and Interrupt logic) — (TST00)
- Pattern Test (Relay Register Interface only) — (TST01)
- Command Test (Relay Register Interface only) — (TST02)
- Data Buffer Test (all interfaces except Relay Register) — (TST03)
- Control Signals Test (HP 12849A Interface only) — (TST04)
- Input/Output Test (Automatic Dialer only) — (TST05)
- Multi-line Operation Test (Automatic Dialer only) — (TST06)
- Dialer Turn-on, Wait, Turn-off Test (Automatic Dialer only) — (TST07)
- Command/Status and Data Test without STC (Universal Interface board only) — (TST08)
- Command/Status and Data Test with STC (Universal Interface board only) — (TST09)
- Command Channel Test (Universal Interface board only) — (TST10)
- Data Channel and Power On Circuit Test (Universal Interface board only) — (TST11)
- Pseudo Operator Design (Opdesign) — (TST12)

2-2. TEST CONTROL AND EXECUTION

The diagnostic outputs a title message to the console device and then executes the tests according to the options selected on the Switch Register. The diagnostic control section primarily checks Switch Register bits 15, 13, and 12.

The diagnostic also keeps count of the number of passes that have been completed and will output the pass count at the completion of each pass (if Switch Register bit 10 is clear). The count will be reset only if the diagnostic is restarted.

Test sections are executed one after the other in each diagnostic pass. User selection or default will determine which test sections will be executed. Switch Register bit 9 is used to indicate that test selection is desired. (Refer to paragraph 3-3.)

By setting Switch Register bit 8 the Preset test in BI-O is suppressed. When Switch Register bit 12 is set the tests that are selected will be repeated and the Preset test is skipped.

Table 2-1 shows the approximate execution time of each test on an HP 1000 M-Series Computer. The execution time will be less on a 2100A/S, HP 1000 E/F-Series Computer.

Table 2-1. Approximate Execution Time of Each Test on an M-Series Computer

TEST NO.	EXECUTION TIME IN SEC
00	Depends on operator response
01	Depends on operator response
02	Depends on operator response
03	10 sec
04	Depends on operator response
05	< 1 sec
06	Depends on operator response
07	Depends on operator response
08	12 sec
09	> 20 sec. Depends on operator response
10	> 7 sec. Depends on operator response
11	> 10 sec. Depends on operator response
12	Depends on operator response

2-3. MESSAGE REPORTING

There are two types of messages output for this diagnostic: error and information. Error messages are used to inform the operator when the interface fails to respond to a given control or sequence. Information messages are used to inform the operator of the progress of the diagnostic or to instruct the operator to perform an operation related to a function of the interface. In the latter case, an associated halt will occur to allow the operator time to perform the function. The operator must then press RUN. If a console device is used, the printed message will be preceded by the letter E (error) or the letter H (information) and a number (in octal). The number is also related to the halt code when a console device is not available. Examples of error and information messages are as follows: (Specific meanings are listed in section IV.)

Example — Error with halt

Message: E026 INT EXECUTION ERROR
Halt Code: 102026 (octal) (T-register or Memory Data Register)

Example — Information with halt

Message: H024 PRESS PRESET (EXT & INT), RUN
Halt Code: 102024 (octal)

Example — Information only

Message: H025 BASIC I/O COMPLETED
Halt Code: None

Error messages can be suppressed by setting Switch Register bit 11 and error halts can be suppressed by setting Switch Register bit 14. This is useful when looping on a single section that has several errors.

Information messages are suppressed by setting Switch Register bit 10.

2-4. DIAGNOSTIC LIMITATIONS

Interface capability for receiving, passing, and denying priority (priority string logic) is not completely checked by this diagnostic. If the interface does not receive priority (i.e., PRH from the next lower select code) an error E014 NO INT will occur. To check this, remove an interface of a lower select code and run the Basic I/O test. the above mentioned error should occur. Checking the interface ability to pass or deny priority is beyond the scope of this diagnostic.

Direct Memory Access (DMA) in the 2100A/S or Dual Channel Port Controller (DCPC) in the HP 1000 M/E/F-Series Computers, portion of the interface under test is checked by its own diagnostic.

The diagnostic does not check the gating functions of jumpers W9 through W12 on the HP part number 12554-60023 (HP 12554A) and 12554-60024 (HP 12554A-001) cards, or jumpers W6 through W8 on HP part number 12566-60024 (HP 12566B/C-001) and 12566-60025 (HP 12566B/C-002) cards.

Also, the diagnostic does not check the Device Command flip-flop reset signal carried (when CLC or CRS signals occur) by jumper W13 on the HP part number 12554-60023 (HP 12554A) and 12554-60024 (HP 12554A-001) cards, or jumper W9 on the HP part number 12566-60024 (HP 12566B/C-001) and 12566-60025 (HP 12566B/C-002) cards.

For the HP 12849A Interface, the diagnostic does not check the gating functions of jumpers W6 through W8, the Device Command flip-flop reset signal carried by W9 when CLC or CRS* signals occur, the false condition of buffered control signals PON* and CTL*, nor the buffered POPIO signal.

The diagnostic does not check the Device Encode or Device Flag circuitry on cards HP part number 12551-6001 (HP 12551B) or 12551-6002 (HP 12551B-01) if the display connector is not used (see table 1-1).

*CRS=Control Reset, PON=Power On Normal, CTL=Control Flip Flop.

3-1. OPERATING PROCEDURES

Remove the interface board to be diagnosed and set the jumpers or switches on the interface board (if applicable) as specified in appendix A. Install the appropriate test connector per table 1-1. Install the interface board to be diagnosed into the desired I/O channel. If a HP 12930 Universal Interface Board is tested the next higher I/O channel (lower priority channel) must be loaded with a 12777A Priority Jumper card because the 12930 UI board occupies two select codes.

If an HP 12930 Universal Interface Board is tested, set power fail/auto restart switch as follows:

For 2100A/S computers — On top of I/O Control Card A7, set ARS/ $\overline{\text{ARS}}$ switch S1 to ARS (auto restart position).

For 21MX and HP 1000 computers — At rear of CPU PCA A1, set ARS/ $\overline{\text{ARS}}$ switch A1S2 (right-hand switch when viewed from rear of PCA) to ARS (right-hand position). This is the auto restart position.

NOTE

When testing an HP 12930, it is advantageous to put the board on an extender board so that the switches (see table A-7) can be easily accessed.

A flowchart of the operating procedures for loading the Diagnostic Configurator and this diagnostic is provided in figure 3-1.

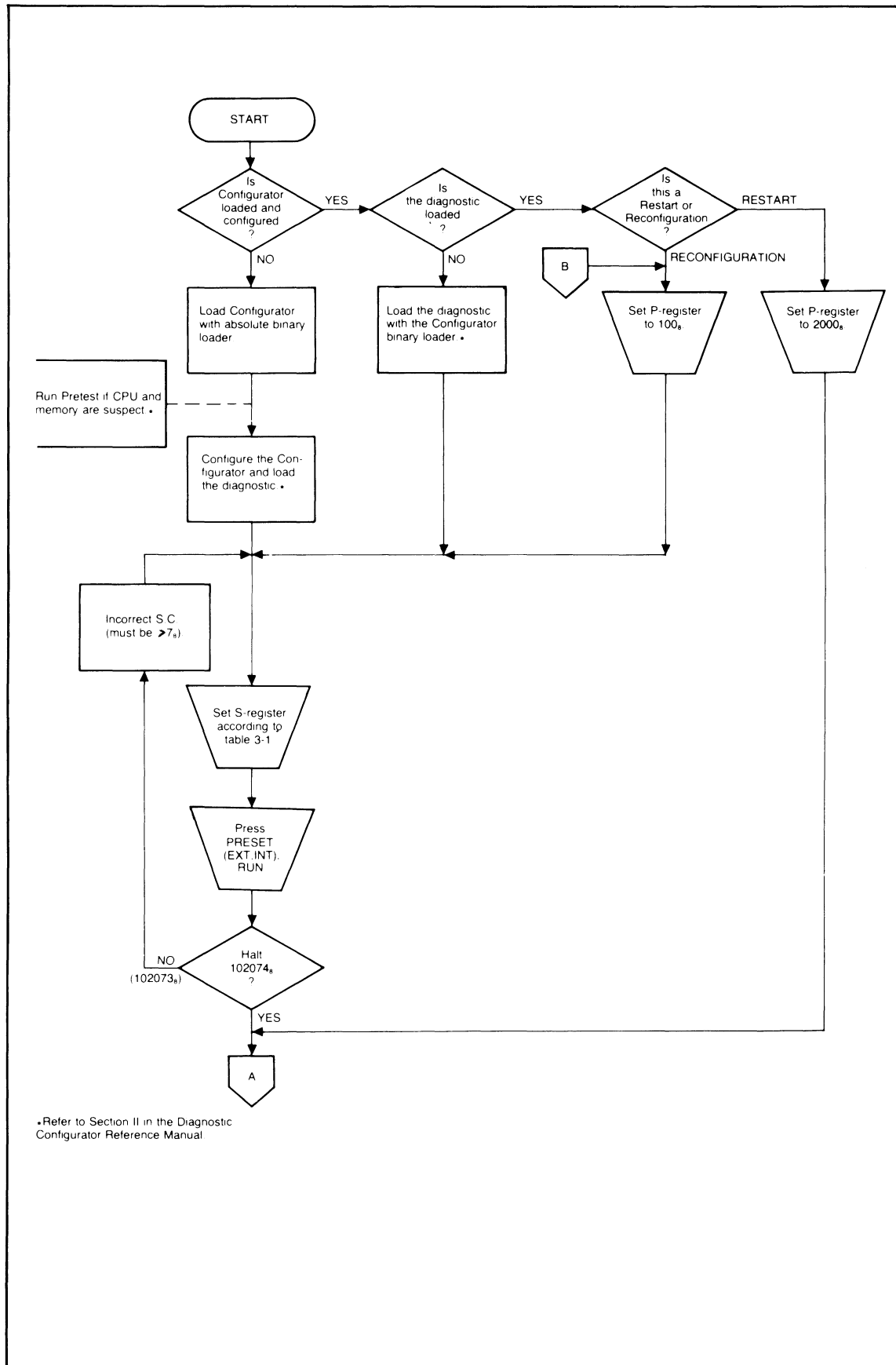
Table 3-1 is used in conjunction with the flow chart to configure the diagnostic program for the interface to be tested.

The default case (bits 7 through 15 cleared) is for the HP 12554A, HP 12566B/C, HP 12602B or the HP 12875B interface.

Table 3-2 is used during execution of the diagnostic to allow the operator to control the sequence of execution and to set up the desired diagnostic options.

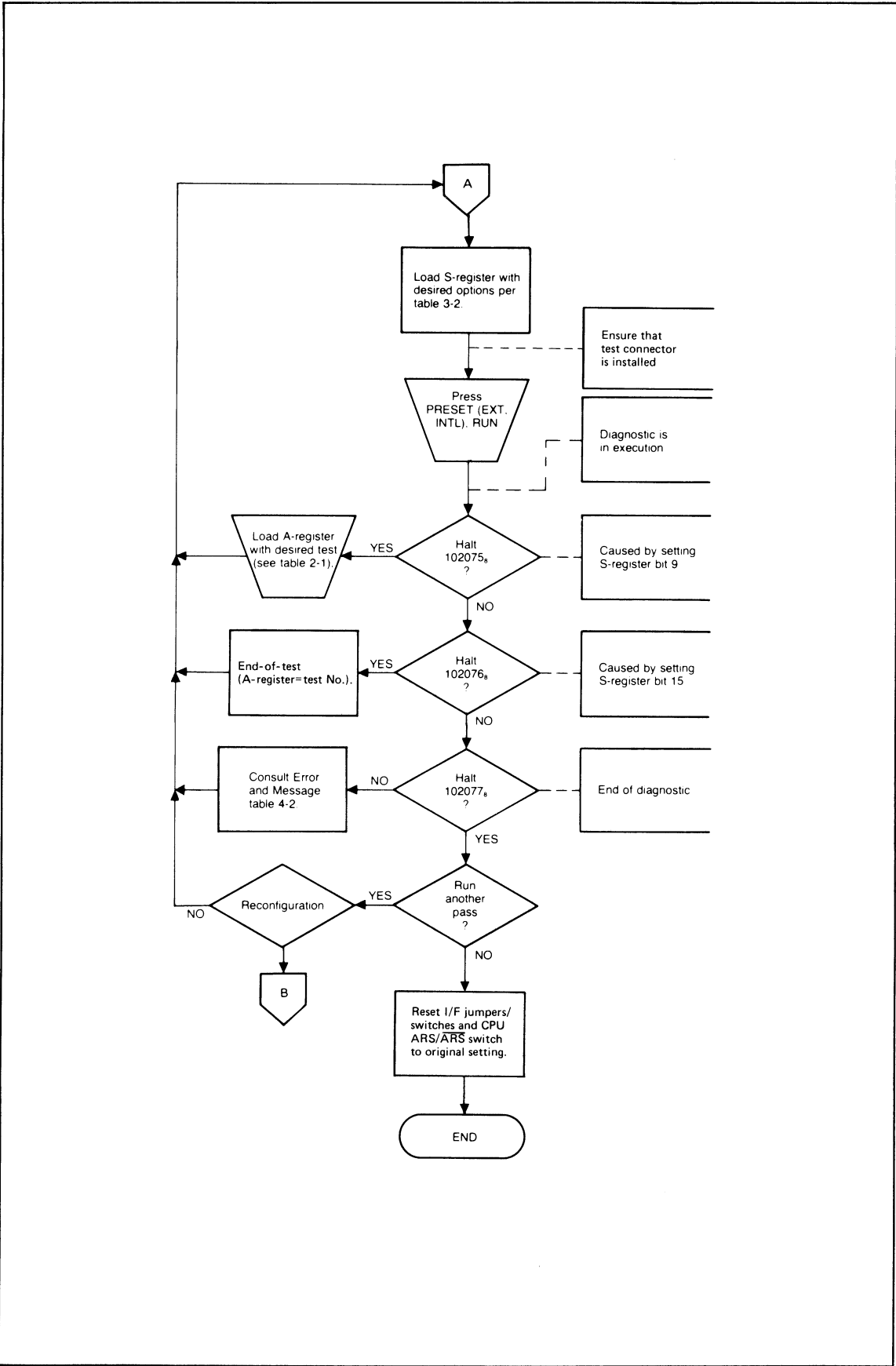
Table 3-3 summarizes test selection via the A-REG and is discussed further in paragraph 3-3.

For Pseudo Opdesign instructions refer to paragraph 4-14.



7700-43

Figure 3-1. Operating Procedure Flowchart (Sheet 1 of 2)



7700-44A

Figure 3-1. Operating Procedure Flowchart (Sheet 2 of 2)

Table 3-1. Select Code and Interface Type Entered via S-Register

BIT		MEANING IF SET
0-5	S.C.	Set to select code of interface under test.
6		Reserved.
7	HP 12930A	Universal interface kit is under test.
8	HP 12589A	Automatic Dialer interface kit is under test.
9		Relay Register has data read-back capabilities (12551B-01).
10	HP 12551B	Relay Register is under test (12551B or 12551B-01).
11	HP 12597A	8-bit duplex register interface bit is under test (12597A ground true/positive, 12597A-001 negative true/ground, or 12597A-002, -003 or -005).
12		Set if W5 of 12849A is removed (W4 must be in positive B), cleared if W5 is installed (W4 may be in positive A or B).
13		Set if 12849A-001, positive true, cleared if 12849A, ground true.
14		Set if W10 on 12849A is in positive B (PON ground true), cleared if W10 on 12849A is in positive A (PON positive true).
15	HP 12849A	Controller Microcircuit interface kit 12849A or 12849A-001 is under test.

The default case (bits 7 through 15 cleared) is for the HP 12554A, HP 12566B/C, HP 12602B or the HP 12875B interface.

3-2. RUNNING THE DIAGNOSTIC

At the completion of each pass of the diagnostic, the pass count is output to the console. If Switch Register bit 12 was not set, the computer will halt with 102077 in the Memory Data Register (T-register). At this point the A-register contains the pass count. The operator can press RUN to execute another pass.

If bit 12 is set it causes the diagnostic to loop on the selected tests. Bit 13, when set, is used to loop on a given test that is running at the time, as specified in paragraph 3-3 and table 3-2. Bit 15, if set, will halt the computer at the completion of a test.

If a trap cell halt occurs (106077) the operator must determine the cause of either the interrupt or the transfer of control to the location shown in the M-REG. The program may need to be reloaded to continue.

When a halt occurs and/or a message is printed on the console device, the operator must refer to table 4-2 for the meaning of the halt.

The execution time of the diagnostic is dependent upon the computer used, the card under test, the test selection and operator response time. Table 2-1 lists the approximate execution time for each test minus the time required by the operator.

Table 3-2. Switch Register Options

BIT	MEANING IF SET
0	} Pseudo Operator Design, refer to paragraph 4-14.
1	
2	
3	
4	
5	
6	Reserved.
7	Suppress tests requiring operator intervention.
8	Abort current diagnostic execution and halt (102075); the user may specify a new group of tests in the A-register (see table 3-3) and press RUN. This may also be used after error halt 102034 or 102042, 102054, 102055, 102056, 102057, 102060, 102061.
9	Suppress non-error messages.
10	Suppress error messages.
11	Repeat all selected tests which do not require operator intervention after diagnostic run has completed without halting. Message "PASS XXXXXX" will be output before looping unless bit 10 is set or a console device is not present. Also, the Preset test (in BI-O) will be suppressed. All other selected tests will be executed. However H062 will not be skipped in case of exercising TST 09-11.
12	Repeat last test executed (loop on test). H062 will be skipped in case of exercising TST 09, 10, or 11.
13	Suppress error halts.
14	Halt (102076) at the end of each test; the A-register will contain the test number in octal.
15	

Table 3-3. Test Selection Summary via A-Register

A-REG BIT	IF SET WILL EXECUTE	TEST NO.	TEST IS EXECUTED ON
0	Basic I/O test (flag and interrupt logic).	00	Every I/O board
1	Pattern test.	01	} Relay Register.
2*	Command test.	02	
3	Data buffer test.	03	} Interface board only.
4	Control signal test.	04	All interfaces except Relay Register and Automatic Dialer.
5	Input/output test.	05	Controller Microcircuit Interface only.
6	Multiline operation test.	06	} Automatic Dialer interface only.
7	Dialer turn on, wait, turn off test.	07	
8	Command/Status and Data test without STC.	08	} Universal Interface only.
9	Command/Status and Data test with STC.	09	
10	Command Channel test.	10	
11	Data Channel and power on circuit test.	11	
12*	Pseudo Operator Design.	12	

* If the A-Register is cleared the default case will be selected. The control section will then select all applicable tests excluding TST 02 and 12. After turning control over to a discreet test, the first routine inside the test checks the original interface type entered via the S-Register (see table 3-1) and either exits the test if the test is not executed on the specified board or else continues with the test.

3-3. TEST SELECTION

The Control portion of the program provides the operator with a method to select a single test or sequence of tests to be run. The operator sets Switch Register bit 9 to indicate that a selection is desired. If the computer is halted press RUN. The computer will come to a halt 102075 (octal) to indicate ready for selection (see table 3-3). If the diagnostic is running, the test in progress will be completed, then the program will halt. After the halt, the operator may load the A-register with the test selections. Bit 0 of the A-register represents Test 00, bit 1 represents Test 01, and so on through bit 12, which represents Test 12 (decimal). After pressing RUN, the operator-selected test(s) will be executed. If the operator clears all bits of the A-register, all applicable tests defined in table 3-3 will be executed except Test 12, Pseudo Opdesign.

3-4. RESTARTING

The diagnostic may be restarted by setting the P-REG to 2000, loading the S-REG with the desired diagnostic options per table 3-2, then pressing PRESET (EXTERNAL and INTERNAL) and RUN.

The diagnostic may be reconfigured by setting the P-REG to 100, loading the S-REG according to table 3-1, pressing PRESET (INTERNAL and EXTERNAL) and RUN.

DIAGNOSTIC PERFORMANCE

SECTION

IV

4-1. TEST DESCRIPTION

Tests 00 through 12 (decimal) are described below. Refer to table 4-2 (comments on halt codes) for additional details on the content of each test.

4-2. BASIC I/O TEST, TST00

Subtest 1 — Checks the ability to clear, set, and test the interrupt system. The following instruction combinations are tested:

```
CLF 0 - SFC 0
CLF 0 - SFS 0
STF 0 - SFC 0
STF 0 - SFS 0
```

Errors in the above sequences produce error messages E000 through E003 as shown in table 4-2.

Subtest 2 — Checks the ability to clear, set and test the interface flag. The following instruction combinations are tested:

```
CLF SC - SFC SC
CLF SC - SFS SC
STF SC - SFC SC
STF SC - SFS SC
```

Errors in the above sequences produce error messages E005 through E010 as shown in table 4-2.

Subtest 3 — Checks that the test select code does not cause an interrupt with the flag and control set on the interface and the interrupt system off. The sequence of instructions is shown below:

```
STF 0
STF SC
STC SC
CLF 0
```

The CLF 0 instruction should inhibit an interrupt from occurring from the interface. Error message E004 occurs if CLF 0 fails.

Subtest 4 — Checks that the flag of the interface under test is not set when all other select code flags are set. Error message E011 occurs if a flag is set incorrectly.

- Subtest 5 — Checks the ability of the interface to interrupt. With the flag and control set and the interrupt system on, the interface should interrupt. If the interrupt is missing error message E014 occurs.

Checks that the interrupt occurred where expected. The interrupt should not occur before a string of priority-affecting instructions are executed. The following instructions are used to check the hold-off operation:

```
STC 1
STF 1
CLC 1
CLF 1
JMP **1, I
DEF **1
JSB **1, I
DEF **1
NOP
```

Error messages E012 and/or E015 will occur if the hold-off failed. If a second interrupt is encountered after the interrupt system has been turned back on error message E013 will occur.

Checks that no instruction was missed during the interrupt (E026 INT EXECUTION ERROR).

- Subtest 6 — Checks that with the interrupt system on, and the SC control and flag set, there is no interrupt following a CLC SC instruction. The following sequence of instructions is used:

```
STC SC
STF SC
STF 0
CLC SC
```

If the CLC SC fails to inhibit an interrupt, error message E016 will occur.

- Subtest 7 — Checks that the CLC 0 instruction inhibits interrupts when the SC control and flag are set. The following sequence of instructions is used:

```
CLF SC
STC SC
STF SC
STF 0
CLC 0
```

If the CLC 0 fails to inhibit an interrupt, error message E017 will occur.

- Subtest 8 — Checks that the PRESET (EXTERNAL and INTERNAL as applicable) switch(es) on the operator panel performs the following actions: (Error messages E020 through E023 can occur.)

Sets the interface flag (EXTERNAL).
 Clears interface control (EXTERNAL).
 Turns off the interrupt system (INTERNAL).
 Clears the I/O data lines (EXTERNAL).
 Clears the data register in the interface (INTERNAL).

4-3. PATTERN TEST, TST01

This test is for the HP 12551B Relay Register Interface only. The test outputs a set of four patterns, halting after each pattern to allow the operator to observe the relay closures and openings. If the read-back option card (HP 12551B-01) is being used, the read-back option is checked. Error message E034 will occur if the data read back is incorrect.

NOTE

One method that may be used to check relay outputs would be to apply an ohmmeter across the relay contacts. When an output bit is a "1", the corresponding relay is closed.

If available, the 16-Bit Display Hood can be used for a visual display of the relay outputs (refer to display connector figure B-3 in appendix B of this manual). This connector is not part of the interface kit but can be built by the operator.

The above mentioned methods do not check rise/fall time or bounce of the relay contacts. These parameters will depend upon the relay and the loading of special resistor-capacitor combinations on the card.

4-4. COMMAND TEST, TST02

This test is not part of the standard test run. It has to be explicitly selected by the operator. The test is only for the HP 12551B Relay Register Interface. It checks that the command output signals are functioning correctly. The test requires the special connector shown in appendix B figure B-3. Error messages E030 and E040 can occur, (i.e., flag should set when the response signal is received), and information messages H035 and H037 will occur (if a console is present and Switch Register bit 10 is not set).

4-5. DATA BUFFER TEST, TST03

This test is applicable to all cards except the Relay Register. The test checks the input and output buffers by comparing inputs and outputs for all possible combinations of the data bits. At the end of the test a CRS signal is generated to ensure that the data buffer is cleared. Error message E034 or E042 may occur.

4-6. CONTROL SIGNALS TEST, TST04

This test is for the HP 12849A Controller Microcircuit Interface only and test connector part no. 12849-60004 as shown in appendix B figure B-2 must be connected for the test. A halt has been provided to allow the operator to accomplish this. The test ensures that the buffered control signals CRS, PON, FLG*, and CTL are functioning. The test also checks the ability to set the DIR* flip-flop with an input command, and to clear it with an RDIR* signal. The test checks the ability to set the ORL* flip-flop with an output command, and to clear it with an RORL* signal. For this test, error messages E042 and E044 through E053 can occur. Information message H043 will occur.

*FLG=Flag, DIR=Data Input Received, RDIR=Reset Data Input Received, ORL=Output Register Loaded, RORL=Reset Output Register Loaded.

4-7. INPUT/OUTPUT TEST, TST05

This test is exclusively for the HP 12589A Automatic Dialer Interface Kit. Test connector 12589-6005 must be connected to exercise the test. It checks the Dial Register and the Call Register FF by outputting a program data word which is read back via the test connector as a device status word. The same input is also verified through the status register flag buffer and flag FF. Error messages E101 through E116 may occur.

4-8. MULTI-LINE OPERATION TEST, TST06

This test is exclusively for the HP 12589A Automatic Dialer Interface Kit. The test connector 12589-6005 must be connected to exercise the test. It verifies the proper operation of the call request register and the line selector relays K1 through K4. The test connector interconnects these relay outputs serially to the DS2 light. The information message "H100 Multi-line operation, use SWR bits 1-4 to operate DS2" is output to the console (if present). The user then can check if each relay operates by turning on bits 1 through 4 of the S-register which should turn on DS2. By turning off any one of the 4 bits DS2 should go off accordingly. The condition of DS1 has no significance. To exit the test, set, then clear bit 7 on the S-register. No error messages occur with this test.

4-9. DIALER TURN ON, WAIT, TURN OFF TEST, TST07

This test is exclusively for the HP 12589A Automatic Dialer Interface Kit. The test connector 12589-6005 must be connected to exercise the test. It checks the Call request, the Digit present buffer and Digit present FF's via the DS1 light on the test connector. The test consists strictly of a visual check of DS1 and has no error messages. During this test DS1 should cycle on and off every 2 seconds until requested to exit by setting, then clearing S-Register bit 7.

4-10. COMMAND/STATUS AND DATA TEST WITHOUT STC, TST08

This test is exclusively for the HP 12930A Universal Interface Board. The appropriate test connector for each of the three boards as shown in table 1-1 is required to run this test. The test checks the command and status register, interference between command/status register and the data register and checks the data register transfer at full speed without STC between data output and input. The oneshot for the CRS-stretched signal is also tested. The switches of the interface board have to be set as specified in table A-7, column "TST0-8".

4-11. COMMAND/STATUS AND DATA TEST WITH STC, TST09

This test requires the same test connector as outlined in paragraph 4-10. It performs the same tests as outlined above except that the data register transfer is accomplished with a STC instruction and CRS-stretched is not tested. The switch setting U106S2 has to be set to the new position "5" as specified in table A-7, column "TST09."

4-12. COMMAND CHANNEL TEST, TST10

This test is exclusively for the HP 12930A Universal Interface Board. This test requires the same test connector as outlined in paragraph 4-10. It checks the Command Channel Control FF and the Command Channel Command FF. The setting of switches U85S2 to position 5 and U85S3 to position 9 as outlined in table A-7, column "TST10" is required.

4-13. DATA CHANNEL AND POWER ON CIRCUIT TEST, TST11

This test is exclusively for the HP 12930A Universal Interface board. It requires the same test connector as outlined in paragraph 4-10. The test will not pass if the old test connectors 12930-60006, -60008 or -60009 are employed (see table 1-1, footnote ²). The setting of six switches have to be changed as outlined in table A-7, column TST11. The test checks the data channel control FF with the data- and command channel device flag signals connected through the inverting one shots U117A and U116B. The power on circuit through the specially coupled isolators is also tested.

4-14. PSEUDO OPERATOR DESIGN TEST, TST12

Test 12 is not part of the standard sequence of tests for this diagnostic and must be specifically selected to execute. The test is primarily used for troubleshooting. Refer to paragraph 3-3 for test selection instructions. When executed it allows the operator to select a given set of operations.

When first entered, information message H065 is output instructing the operator to select functions on the Switch Register, followed by a Halt 102065. The operator should then:

- a. Set the A-register to the desired pattern. This is the pattern that will be output to the interface (except bits eliminated by the B-REG).
- b. Set the B-register to the bit mask (1=eliminate bit during any output, input, or compare, 0=retain bit).
- c. Set S-REG to the desired options as outlined below.

S-REG BIT	FUNCTION IF SET
0	Increment test pattern by one
1	Output test pattern to interface (OTA SC)
2	Encode test pattern (STC SC,C)
3	Wait for flag (SFS SC) (E042-possible)
4	Input pattern from interface (LIA SC)
5	Compare input with output test pattern (E034-possible)
6	Loop on Opdesign selection
7-15	Refer to table 3-2

- d. Press RUN.

If Switch Register bit 6 is not set the program will halt 102065 after executing the selection. Message H065 will not print again. If another pass is desired, make selections and press RUN. To exit the section clear bits 0 through 6 of the Switch Register and press RUN.

4-15. PROCESSOR INTERCONNECT KIT

The following procedure describes a method of testing the HP 12875B Processor Interconnect Kit using this diagnostic. Only one channel can be checked at a time with this method. The assumption is made that the diagnostic has been loaded and the tests for the individual cards in the central processor have been executed. The procedure follows:

- a. Ensure that all cables are correctly installed.
- b. Load the following into I/O processor memory:

<u>ADDRESS</u>	<u>CONTENT</u>	<u>PROGRAM</u>
2	107700	CLC 0,C
3	1023SC*	SFS SC
4	024003	JMP *-1
5	1025SC*	LIA SC
6	1026SC*	OTA SC
7	1037SC*	STC SC,C
10	024003	JMP *-5

This program will loop the data and flag back to the central processor in a manner similar to that of the test connector.

- c. On the I/O processor, set the P-register to 2 (octal) and press PRESET (INTERNAL and EXTERNAL) and RUN.
- d. Execute the diagnostic in the central processor as if the test connector is being used.
- e. To check the opposite channel perform the above procedures using the opposite channel select code.

This procedure does not accomplish the Basic I/O test on the interfaces in the I/O processor. It does check enough of the hardware so that the diagnostic can be cross loaded. The interfaces in the I/O processor may then be thoroughly tested.

*SC = The select code of the interface in the I/O processor that corresponds to the interface in the central processor that is under test.

4-16. ERROR INFORMATION MESSAGES/HALT CODES

A halt code summary appears in table 4-1. Complete explanations of individual error information messages and halt codes appear in table 4-2.

Table 4-1. Halt Code Summary

HALT	MEANING
TEST 00 (OCTAL) THROUGH 05 (OCTAL)	
102000 thru 102070 and 106000 thru 106017	Error (E) or information (H) messages 00 thru 117 (octal).
CONTROL	
102073	Select code input error.
102074	End of Configuration (select code valid).
102075	User selection request.
102076	End of Test (A-register contains test number).
102077	End of diagnostic run.
106077	Trap cell halt in locations 2 thru 77 (octal).
<p>Note: For any other halts refer to the <i>Diagnostic Configurator Reference Manual</i>.</p>	

Table 4-2. Error and Information Messages and Halt Codes

HALT** CODE	PROGRAM SECTION	MESSAGE	COMMENTS
None	Test Control	GENERAL PURPOSE REGISTER DIAGNOSTIC, DSN XXXXXX	Introductory message with current DSN.
None	Test Control	TEST XX	Information message before error message (XX equals test number). Message occurs only once within a test and is suppressed for any sub- sequent messages within the same test.
102000	Test 0	E000 CLF 0-SFC 0 ERROR	CLF/SFC 0 combination failed. CLF did not clear flag or SFC caused no skip with flag clear.
102001	Test 0	E001 CLF 0-SFS 0 ERROR	CLF/SFS 0 combination failed. CLF did not clear flag or SFS caused skip with flag clear.
102002	Test 0	E002 STF 0-SFC 0 ERROR	STF/SFC 0 combination failed. STF did not set flag or SFC caused skip with flag set.
102003	Test 0	E003 STF 0-SFS 0 ERROR	STF/SFS 0 combination failed. STF did not set flag or SFS caused no skip with flag set.
102004	Test 0	E004 CLF 0 DID NOT INHIBIT INT	With card flag and control set, CLF 0 did not turn off interrupt system.
102005	Test 0	E005 CLF SC-SFC SC ERROR	CLF/SFC SC combination failed. CLF did not clear flag or SFC caused no skip with flag clear. If this halt occurs while testing a 12930 UI board after the message "H025 basic I/O completed on data channel" verify that the jumper U97S1 is in position 1.
102006	Test 0	E006 CLF SC-SFS SC ERROR	CLF/SFS SC combination failed. CLF did not clear flag or SFS caused skip with flag clear.
102007	Test 0	E007 STF SC-SFC SC ERROR	STF/SFC SC combination failed. STF did not set flag or SFC caused skip with flag set.
102010	Test 0	E010 STF SC-SFS SC ERROR	STF/SFS SC combination failed. STF did not set flag or SFS caused no skip with flag set.
102011	Test 0	E011 STF XX SET CARD FLAG	Select code screen test failed. A- register contains XX (octal) where XX equals select code that caused card flag to set.
102012	Test 0	E012 INT DURING HOLD OFF INSTR	Interrupt occurred during an I/O instruction or a JMP/JSB indirect instruction.
102013	Test 0	E013 SECOND INT OCCURRED	Card interrupted a second time after initial interrupt was processed.

**Error halt codes are in octal, test numbers are in decimal.

Table 4-2. Error and Information Messages and Halt Codes (Continued)

HALT** CODE	PROGRAM SECTION	MESSAGE	COMMENTS
102014	Test 0	E014 NO INT	No interrupt occurred with card flag and control set and the interrupt system on.
102015	Test 0	E015 INT RTN ADDR ERROR	Interrupt did not occur at the correct location in memory.
102016	Test 0	E016 CLC SC ERROR	CLC SC did not clear card control with the interrupt system on.
102017	Test 0	E017 CLC 0 ERROR	CLC 0 did not clear card control with the interrupt system on.
102020	Test 0	E020 PRESET (EXT) DID NOT SET FLAG	PRESET (EXT) did not set the card flag.
102021	Test 0	E021 PRESET (INT) DID NOT DISABLE INTS	PRESET (INT) did not disable the interrupt system.
102022	Test 0	E022 PRESET (EXT) DID NOT CLEAR CONTROL	PRESET (EXT) did not clear control.
102023	Test 0	E023 PRESET (EXT) DID NOT CLEAR I/O LINES	PRESET (EXT) did not clear I/O data lines.
102024	Test 0	H024 PRESS PRESET (EXT & INT), RUN	Press PRESET (EXTERNAL/INTERNAL) then RUN.
None	Test 0	H025 BASIC I/O COMPLETE (ON DATA/CONTROL CHANNEL)	Basic I/O tests completed. (In case of a 12930 UI board this message should occur twice, once for the data, once for the control channel.)
102026	Test 0	E026 INT EXECUTION ERROR	Interrupt was not processed correctly.
102030	Test 1	H030 OBSERVE ALL ZEROS	Operator should check that all relay outputs are open. A-register equals the test pattern.
102031	Test 1	H031 OBSERVE ALL ONES	Operator should check that all relay outputs are closed. A-register equals test pattern.
102032	Test 1	H032 OBSERVE PATTERN 125252	Operator should check that relay outputs are properly set. A-register equals test pattern.
102033	Test 1	H033 OBSERVE PATTERN 052525	Operator should check that the relay outputs are properly set. A-register equals test pattern.
102034	Tests 1,3,5	E034 DATA NON-COMPARE EXPECTED XXXXXX ACTUAL XXXXXX	Read-back indicates failure of card between input to buffer register and feed-back to computer. A-register equals expected read-back, B-register equals actual.

**Error halt codes are in octal, test numbers are in decimal.

Table 4-2. Error and Information Messages and Halt Codes (Continued)

HALT** CODE	PROGRAM SECTION	MESSAGE	COMMENTS
102035	Test 2	H035 OBSERVE COMMAND OUTPUT FOLLOWED BY APPLYING EXTERNAL RESPONSE SIGNAL. PUSH RUN.	Check that Command flip-flop was set (pin W at logical level 0 and pins U and 17 are connected). Apply response signal to card. (12 VDC to pins V and 18.) Remove response signal. Push RUN.
102036	Test 2	E036 APPLICATION OF RESPONSE SIGNAL CAUSED FLAG TO SET.	Flag was set by application of external response signal to card.
102037	Test 2	H037 OBSERVE COMMAND OUTPUT FOLLOWED BY APPLYING EXTERNAL RESPONSE SIGNAL. PUSH RUN.	Check that Command flip-flop was cleared (pin W at logic level 1 and pins U and 17 are not connected). Apply response signal to card (12 VDC to pins V and 18). Remove response signal. Press RUN.
102040	Test 2	E040 APPLICATION OF RESPONSE SIGNAL DID NOT SET FLAG.	Flag was not set by application of response signal.
102041	Test 3	H041 USE TEST CONN. 12849-60003.	Use test connector A for data test. This message output only for HP 12849A.
102042	Tests 3,4 & 12	E042 FLAG DID NOT SET.	Test Device Command and ability of Device Flag Command to set flag. (Check if proper test connector is installed.)
102043	Test 4	H043 USE TEST CONN. 12849-60004.	Use test connector B for Control Signals test.
102044	Test 4	E044 NO CRS OR RDIR DOES NOT CLEAR DIR-FF.	Test CRS and ability to clear DIR-FF with RDIR.
102045	Test 4	E045 DIR FALSE AFTER IOI	Test DIR and ability of IOI to set DIR-FF.
102046	Test 4	E046 ORL TRUE AFTER RORL	Test ORL and ability to clear ORL-FF with RORL.
102047	Test 4	E047 ORL FALSE AFTER IOO	Test ORL and ability of IOO to set ORL-FF.
102050	Test 4	E050 PON FALSE	PON should be true when computer is on.
102051	Test 4	E051 FLG TRUE AFTER CLF	Test buffered flag output (FLG pin U of the 48-pin connector).
102052	Test 4	E052 FLG FALSE AFTER STF	Test buffered flag output (FLG pin U of the 48-pin connector).
102053	Test 4	E053 CTL FALSE AFTER STC	Test buffered control output (CTL pin X of the 48-pin connector).
102054	Test 8/9	E054 INCORRECT STATUS WORD EXPECTED XXXXXX ACTUAL YYYYYY	If this error occurs in test 08 and the expected word is 000200 check first that the next higher SC is occupied by a jumper board. A control word was output and the read-back status word did not compare with the expected (see Note 1).

**Error halt codes are in octal, test numbers are in decimal.

Table 4-2. Error and Information Messages and Halt Codes (Continued)

HALT** CODE	PROGRAM SECT ON	MESSAGE	COMMENTS
102055	Test 8/9	E055 DATA WORD MODIFIED BY COMMAND/ STATUS EXPECTED XXXXXX ACTUAL YYYYYY	The outputted data word was modified by the command word output or the status word input. If this error occurs in TST 08 with expected = actual = 000000 check jumper setting U106S2 (see note 1).
102056	Test 8	E056 CRS STRETCHED IS < 5 μ s	The one-shot U75B stayed in the set position for less than 5 μ s. (Only a rough time comparison is employed.)
102057	Test 8	E057 CRS STRETCHED is > 5 μ s	The one-shot U75B stayed in the set position for more than 5 μ s. (Only a rough time comparison is employed.)
102060	Test 8/9	E060 FULL SPEED DATA TRANSFER FAILURE EXPECTED XXXXXX ACTUAL YYYYYY	The outputted data word at maximum transfer speed was modified. (See note 1.)
102061	Test 8/9	E061 COMMAND OR STATUS MODIFIED BY DATA WORD EXPECTED XXXXXX ACTUAL YYYYYY	The outputted command word or the read-back status word was modified by a long transfer of data words. (See note 1.)
102062	Test 9/10/11	H062 TURN CPU POWER OFF (STANDBY), CHANGE SWITCHES ON UI BOARD PER APPENDIX A, AND TURN POWER ON.	This information message is preceded by a line "TEST nn". Turn the CPU power off, go to Appendix A, table A-7 and set all 15 switches as specified in the column headed by the test number preceding the message H062. Then turn power back on. The CPU will go automatically into the run mode and exercise the test. When looping on one test the message and the halt will not be reached.
102063	Test 10/11	H063 DATA WORD WAS MODIFIED EXPECTED XXXXXX ACTUAL YYYYYY.	A data word transferred to and read back from the interface board was modified (see note 1).
102064	Test 10/11	H064 INCORRECT STATUS WORD EXPECTED XXXXXX ACTUAL YYYYYY.	The status word read in was not as expected (see note 1).
102065	Test 10/11	H065 DATA CH FLAG FF NOT SET	Data channel flag FF was not set after data transfer.
102066	Test 10/11	H066 COMMAND CH FLAG FF NOT SET	Command channel flag FF was not set after control word was transmitted
102070	Test 12	H070 SET SWITCH REG FOR PSEUDO OP DESIGN	Make Switch Register selection as described in paragraph 4-14.

**Error halt codes are in octal, test numbers are in decimal.

Note 1: When reading the error halts 102054, 55, 60, 61, 63 or 64 the A-reg. displays the expected, the B-reg. the actual value.

Table 4-2. Error and Information Messages and Halt Codes (Continued)

HALT** CODE	PROGRAM SECTION	MESSAGE	COMMENTS
102073	Config- uration	None	I/O select code entered at configuration is invalid. Must be greater than 7 (octal). Reenter a valid select code and press RUN.
102074	Config- uration	None	Select code entered during configuration is valid. Enter Switch Register options (see table 3-2) and press RUN.
102075	Test Control	None	Test selection request resulting from Switch Register bit 9 being set. Enter the desired tests to be executed in the A-REG, then press RUN.
102076	Test Control	None	End-of-test halt resulting from Switch Register bit 15 being set (A-register equals test number). To continue, press RUN.
102077	Test Control	PASS XXXXXX	Diagnostic run complete. (A-register value equals pass count.) Switch Register options may be changed. To continue, press RUN.
106000	Test 6	H100 MULTI LINE OPERATION USE SWR BITS 1-4 TO OPERATE DS2.	Set S-reg bit 1 through 4. DS2 should turn on. By clearing any one of the 4 bits DS2 should go off. To exit, set, then clear bit 7. (See paragraph 4-8.)
106001	Test 5	E101 IOBO=100017, FLAG@ 1, IOBI=XXXXXX	Flag should be cleared but was found set.*
106002	Test 5	E102 IOBO=100017, FLAG= 1, IOBI@XXXXXX	IOBI should be 000000.*
106003	Test 5	E103 IOBO=100000, FLAG@ 1, IOBI=XXXXXX	Flag should be cleared but was found set.*
106004	Test 5	E104 IOBO=100000, FLAG= 1, IOBI@XXXXXX	IOBI should be 000000.*
106005	Test 5	E105 IOBO=040017, FLAG@ 1, IOBI=XXXXXX	Flag should be cleared but was found set.*
106006	Test 5	E106 IOBO=040017, FLAG= 1, IOBI@XXXXXX	IOBI should be 000000.*
106007	Test 5	E107 IOBO=040016, FLAG@ 0, IOBI=XXXXXX	Flag should be set but was found cleared.*
106010	Test 5	E110 IOBO=040016, FLAG= 0, IOBI@XXXXXX	IOBI should be 100000.*
106011	Test 5	E111 IOBO=040015, FLAG@ 0, IOBI=XXXXXX	Flag should be set but was found cleared.*
106012	Test 5	E112 IOBO=040015, FLAG= 0, IOBI@XXXXXX	IOBI should be 040000.*

**Error halt codes are in octal, test numbers are in decimal.

* In error halts 106001 through 106016 the pattern outputted to the I/O bus is shown as "IOBO=YYYYYY". Either the flag FF (FLAG) or the input bus (IOBI) was tested and the value tested was not as expected. The value with the "@" symbol indicates the signal which was tested and failed. The one with the "=" symbol is for references only. The A-reg will equal the IOBI-bus.

Table 4-2. Error and Information Messages and Halt Codes (Continued)

HALT** CODE	PROGRAM SECTION	MESSAGE	COMMENTS
106013	Test 5	E113 IOBO=040013, FLAG@ 1, IOBI=XXXXXX	Flag should be clear but was found set.*
106014	Test 5	E114 IOBO=040013, FLAG= 1, IOBI@XXXXXX	IOBI should be 020000.*
106015	Test 5	E115 IOBO=040007, FLAG@ 0, IOBI=XXXXXX	Flag should be set but was found cleared.*
106016	Test 5	E116 IOBO=040007, FLAG= 0, IOBI@XXXXXX	IOBI should be 010000.*
106017	Test 7	H117 OBSERVE DS2.	DS2 should turn on and off at the rate of approximately 2 sec. To exit, set, then clear bit 7 (see paragraph 4-9).
106077	Test Control	None	Halt stored in locations 2 through 77 (octal) to trap interrupts which may occur unexpectedly because of hardware malfunctions. M-register contains the I/O slot number of interrupt. Diagnostic may be partially destroyed if halt occurs. The program may have to be reloaded; the problem should be corrected before proceeding.

**Error halt codes are in octal, test numbers are in decimal.

* In error halts 106001 through 106016 the pattern outputted to the I/O bus is shown as "IOBO=YYYYYY". Either the flag FF (FLAG) or the input bus (IOBI) was tested and the value tested was not as expected. The value with the "@" symbol indicates the signal which was tested and failed. The one with the "=" symbol is for references only. The A-reg will equal the IOBI-bus.

REQUIRED JUMPER INSTALLATIONS

APPENDIX

A

Each of the interface cards that can be tested by the General Purpose Register Diagnostic program must have, during execution of the diagnostic, a certain combination of circuit jumper positions installed. (The HP 12930A Universal Interface Kit requires a different jumper setting for the execution of test 9, 10, and 11.) The combinations allowed are listed below in tables A-1 through A-7, according to the type of interface card to be tested.

A-1. HP 12554A 16-BIT DUPLEX REGISTER (POSITIVE LOGIC)

Any one of the following combinations is allowed:

Table A-1.

		Positions under Combination Number				
		1	2	3	4	5
Jumper Number	W4	B	B	A/B	A	A
	W5	B	A	A/B	A	B
	W6	A/B	A	C	A/B	A
	W7	A	A	A/B	B	B

NOTE

Jumpers not listed may be installed in any position described in the Operating and Service Manual for this card.

A-2. HP 12554A-001 16-BIT DUPLEX REGISTER (NEGATIVE LOGIC)

Any one of the following combinations is allowed:

Table A-2.

		Positions under Combination Number				
		1	2	3	4	5
Jumper Number	W4	A/B	A	A/B	A/B	B
	W5	A	A	A/B	B	A
	W6	B	A	C	B	A
	W7	B	B	A/B	A	A

NOTE

Jumpers not listed may be installed in any position described in the Operating and Service Manual for this card.

A-3. HP 12566B/C, HP 12566B/C-001, HP 12566B/C-002, HP 12566B/C-003 MICROCIRCUIT INTERFACE

Any one of the following combinations is allowed:

Table A-3.

	12566B	12566C
W1	C	C
W2	B	B
W3	B	B
W4	B	B
W5	IN	OUT
W6	IN	OUT
W7	IN	OUT
W8	IN	OUT
W9	A	A
W10	NA	B
W11	NA	IN
W12	NA	OUT
W13	NA	OUT

NOTE

Jumpers not listed may be installed in any position described in the Operating and Service Manual for this card.

A-4. HP 12597A 8-BIT DUPLEX REGISTER (POSITIVE OR NEGATIVE LOGIC)

Any one of the two following combinations is allowed:

Table A-4.

	1	2
W1	A	B
W2	A/B	A/B
W3	Connected	Removed
W4	Connected	Connected
W8	Removed	Connected
W9	Removed	Removed

NOTE

All other jumpers must remain in the factory installed position (they set the polarity of the interface).

A-5. HP 12602B OPTICAL MARK CARD READER INTERFACE

Only one combination is allowed:

Table A-5.

W1	Connected	W8	Connected
W2	Connected	W9	Connected, then removed*
W3	Connected	W10	Connected
W4	B	W11	Connected
W5	B	W12	Connected
W6	B	W13	A
W7	A	W14	B

*Jumper W9 on the HP 12602B card is connected ONLY during execution of the diagnostic. When the card is returned to normal use, W9 MUST be removed.

A-6. HP 12849A, 12849A-001 CONTROLLER MICRO-CIRCUIT INTERFACE

Any one of the following combinations is allowed:

Table A-6.

		Positions under Combination Number			
		1	2	3	4
Jumper Number	W1	B	A	A	B
	W2	A	B	C	C
	W3	A	B	B	A
	W4	B	B	A/B	A/B
	W5	} If W4 is in position A, W5 through W8 must be present (installed). If W4 is in position B, any one or more of W5 through W8 may be absent.			
	W6				
	W7				
	W8				
	W9	} A/B (for all combinations).			
	W10				

A-7. HP 12875B PROCESSOR INTERFACE KIT

Any one of the following combinations is allowed:

Table A-7.

		Positions under Combination Number					
		1	2	3	4	5	6
Jumper Number	W1	B	A	A	A	B	B
	W2	A	B	C	C	C	C
	W3	A	B	B	A	A	B
	W4	B	B	A/B	B	A/B	B

A-7. HP 12930A UNIVERSAL INTERFACE KIT

The universal interface board requires a different jumper switch setting for each of the special UI tests (TST 08-11). At the beginning of TST 09, 10 and 11 the CPU will halt and inform the operator to change the jumpers as specified in the columns headed by the appropriate test number. The switch settings circled indicate any changes from the switch setting of the previous test.

Table A-7.

SWITCH	SWITCH POSITION DURING TEST NR			
	TEST 00-08	TEST 09	TEST 10	TEST 11
U 8 5 S 1	1	1	1	1
S 2	6	6	⑤	5
S 3	10	10	⑨	⑧
U 8 7 S 1	1	1	1	1
S 2	5	5	5	5
S 3	8	8	8	8
U 9 7 S 1	1	1	1	1
S 2	5	5	5	④
S 3	10	10	10	⑨
U 1 0 2 S 1	2	2	2	2
S 2	7	7	7	⑥
S 3	10	10	10	10
U 1 0 6 S 1	1	1	1	②
S 2	6	⑤	5	5
S 3	9	9	9	⑩

TEST CONNECTIONS

APPENDIX

B

Figure B-1 shows the modification required to the test connector part no. 1251-0332 to test the 12566B/C or 12653A microcircuit interface board which is equal to the unmodified test connector part no. 12849-60003 supplied with the 12849A controller microcircuit interface board. In case of the 12849A board this test connector is used during the data buffer test TST 03.

PINS		SIGNAL
FROM	TO	
A	1	Bit 0 to Bit 0
B	2	Bit 1 to Bit 1
C	3	Bit 2 to Bit 2
D	4	Bit 3 to Bit 3
E	5	Bit 4 to Bit 4
F	6	Bit 5 to Bit 5
H	7	Bit 6 to Bit 6
J	8	Bit 7 to Bit 7
K	9	Bit 8 to Bit 8
L	10	Bit 9 to Bit 9
M	11	Bit 10 to Bit 10
N	12	Bit 11 to Bit 11
P	13	Bit 12 to Bit 12
R	14	Bit 13 to Bit 13
S	15	Bit 14 to Bit 14
T	16	Bit 15 to Bit 15
Z	23	Device Command to Device Flag
BB,24		N/C (GROUND)

Figure B-1. Modified Test Connector No. 1251-0332 Equal 12849-60003

Figure B-2 shows the special test connector (part no. 12849-60004) connections which must be used for the control signals test TST 04 for the HP 12849A Controller Microcircuit Interface):

PINS		SIGNAL
FROM	TO	
17	1	ORL to Input Bit 1
18	2	DIR to Input Bit 1
U	3	FLG to Input Bit 2
W	4	PON to Input Bit 3
X	5	CTL to Input Bit 4
V	A	RORL to Output Bit 0
Y	20	CRS to RDIR
Z	23	Device Command to Device Flag
BB,24		N/C (GROUND)

Figure B-2. Test Connector 12849-60004

The special test and display connector for the HP 12551B and HP 12551B-01 Relay Register Board can be used to display the contact closures of the read relays in Test 01 and is required for Test 02. Figure B-3 shows the electrical layout of the test and display connector.

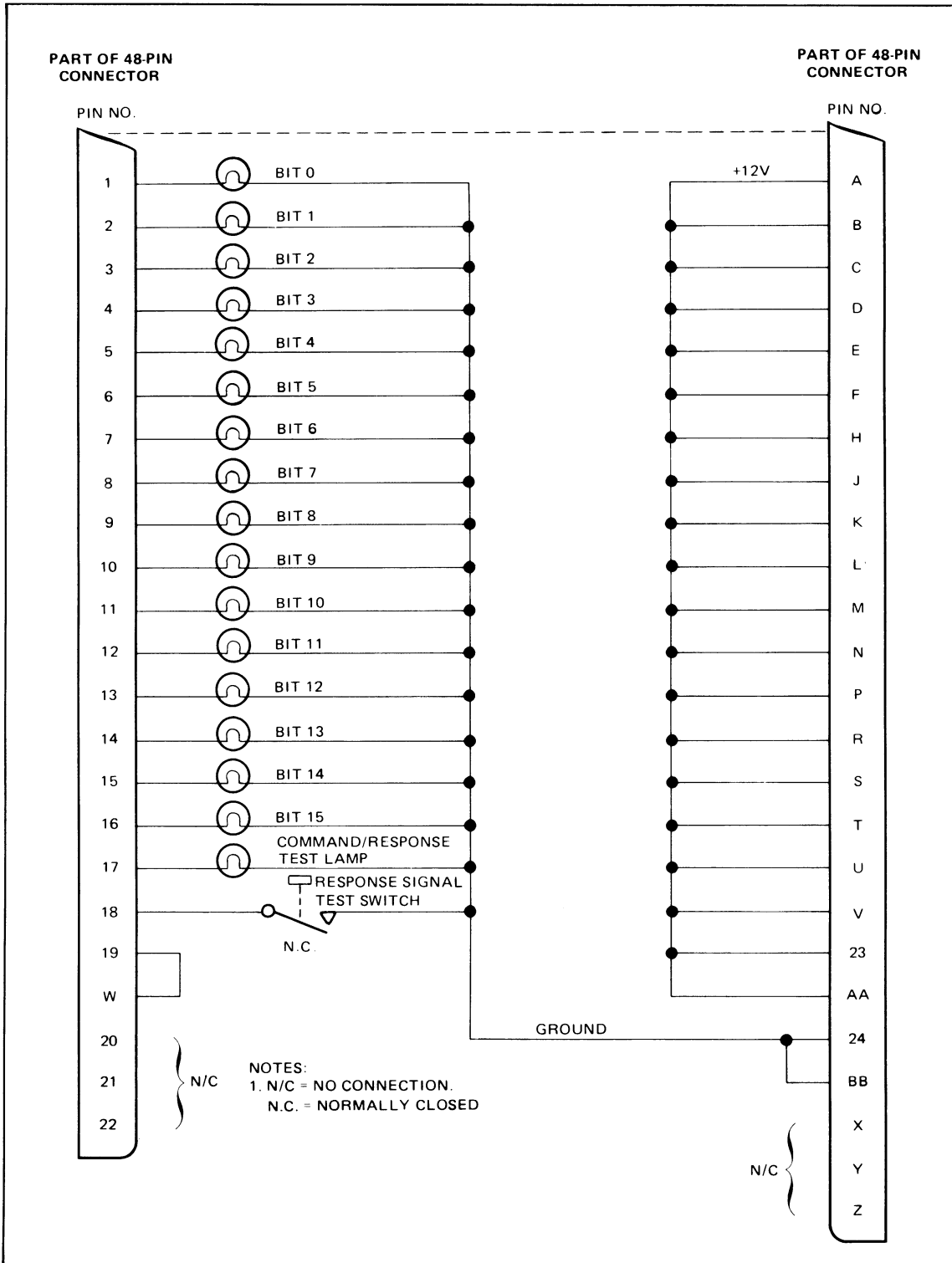


Figure B-3. Test and Display Connector Layout for 12551B Boards

Figure B-4 shows the pin connections to convert a 12930-60006 to a 12930-60013 test connector required to exercise test 11 on the HP 12930 UI board.

FROM PIN	TO PIN	FROM PIN	TO PIN
A1	A26	B1	B26
A2	A27	B2	B27
A3	A28	B3	B28
A4	A29	B4	B29
A5	A30	B5	B30
A6	A31	B6	B31
A7	A32	B7	B32
A8	A33	B8	B33
A9	A34	B9	B34
A10	A35	B10	B35
A11	A36	B11	B36
A12	A37	B12	B37
A13	A38	B13	B38
A14	A39	B14	B39
A15	A40	B15	B40
A16	A41	B16	B41
A17	A42 & B25	B17	B42 & A25
A18	A43	B18	B43
A19	A44	B19	B44
A20	A45	B20	B45
A21	A46	B21	B46
A22	A47	B22	B47
A23	A48	B23	B48
A24	A49	B24	B49

Figure B-4. Diagnostic Test Connector (12930-60013) Wire List

Figure B-5 shows the pin connections to convert a 12930-60008 to a 12930-60014 test connector required to exercise test 11 on the HP 12930A-001 and -003 UI board (ground true).

Figure B-6 shows the pin connections to convert a 12930-60009 to a 12930-60015 test connector required to exercise test 11 on the HP 12930A-002 UI board (positive true).

FROM PIN	TO PIN	FROM PIN	TO PIN
B1	B26	B14	B39
B2	B27	B15	B40
B3	B28	B16	B41
B4	B29	B17	B42 & A25
B5	B30	B18	B43
B3	B31	B19	B44
B7	B32	B20	B45
B8	B33	B21	B46
B9	B34	B22	B47
B10	B35	B23	B48
B11	B36	B24	B49
B12	B37	B25	A17
B13	B38		

Figure B-5. Diagnostic Test Connector (12930-60014) Wire List

FROM PIN	TO PIN	FROM PIN	TO PIN
A1	A26	A14	A39
A2	A27	A15	A40
A3	A28	A16	A41
A4	A29	A17	A42 & B25
A5	A30	A18	A43
A6	A31	A19	A44
A7	A32	A20	A45
A8	A33	A21	A46
A9	A34	A22	A47
A10	A35	A23	A48
A11	A36	A24	A49
A12	A37	A25	B17
A13	A38		

Figure B-6. Diagnostic Test Connector (12930-60015) Wire List

READER COMMENT SHEET

**GENERAL PURPOSE REGISTER DIAGNOSTIC
Reference Manual**

24391-90001

April 1982

Update No. _____
(If Applicable)

We welcome your evaluation of this manual. Your comments and suggestions help us improve our publications. Please use additional pages if necessary.

FROM:

Name _____

Company _____

Address _____

Phone No. _____ **Ext.** _____

FOLD

FOLD

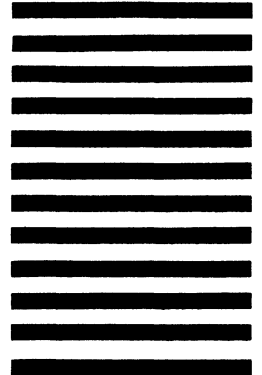


NO POSTAGE
NECESSARY
IF MAILED
IN THE
UNITED STATES

BUSINESS REPLY MAIL
FIRST CLASS PERMIT NO. 141 CUPERTINO, CA.

— POSTAGE WILL BE PAID BY —

Hewlett-Packard Company
Data Systems Division
11000 Wolfe Road
Cupertino, California 95014
ATTN: Technical Publications



FOLD

FOLD

SALES & SUPPORT OFFICES

Arranged Alphabetically by Country



Product Line Sales/Support Key

Key Product Line

A	Analytical
CM	Components
C	Computer Systems Sales only
CH	Computer Systems Hardware Sales and Services
CS	Computer Systems Software Sales and Services
E	Electronic Instruments & Measurement Systems
M	Medical Products
MP	Medical Products Primary SRO
MS	Medical Products Secondary SRO
P	Personal Computation Products
.	Sales only for specific product line
..	Support only for specific product line

IMPORTANT: These symbols designate general product line capability. They do not insure sales or support availability for all products within a line, at all locations. Contact your local sales office for information regarding locations where HP support is available for specific products.

HP distributors are printed in italics.

ANGOLA

Telectra
Empresa Técnica de Equipamentos
Elétricos, S.A.R.L.
R. Barbosa Rodrigues, 41-I DT.
Caixa Postal 6487
LUANDA
Tel: 355 15, 355 16
E, M, P

ARGENTINA

Hewlett-Packard Argentina S.A.
Avenida Santa Fe 2035
Martínez 1640 BUENOS AIRES
Tel: 798-5735, 792-1293
Telex: 17595 BIONAR
Cable: HEWPACKARG
A, E, CH, CS, P

Biotron S.A.C.I.M. e I.
Av Paseo Colon 221, Piso 9
1399 BUENOS AIRES,
Tel: 30-4846, 30-1851
Telex: 17595 BIONAR
M

Fate S.A. I.C.I. Electronica
Venezuela 1326
1095 BUENOS AIRES
Tel: 37-9020, 37-9026/9
Telex: 9234 FATEN AR
P

AUSTRALIA

Adelaide, South Australia Office

Hewlett-Packard Australia Ltd.
153 Greenhill Road
PARKSIDE, S.A. 5063
Tel: 272-5911
Telex: 82536
Cable: HEWPARAD Adelaide
A*, CH, CM, E, MS, P

Brisbane, Queensland Office

Hewlett-Packard Australia Ltd.
49 Park Road
MILTON, Queensland 4064
Tel: 229-1544
Telex: 42133
Cable: HEWPARAD Brisbane
A, CH, CM, E, M, P
Effective November 1, 1982:
10 Payne Road
THE GAP, Queensland 4061
Tel: 30-4133
Telex: 42133

Canberra, Australia Capital Territory Office

Hewlett-Packard Australia Ltd.
121 Wollongong Street
FYSHWICK, A.C.T. 2609
Tel: 80 4244
Telex: 62650
Cable: HEWPARAD Canberra
CH, CM, E, P

Melbourne, Victoria Office

Hewlett-Packard Australia Ltd.
31-41 Joseph Street
BLACKBURN, Victoria 3130
Tel: 877 7777
Telex: 31-024
Cable: HEWPARAD Melbourne
A, CH, CM, CS, E, MS, P

Perth, Western Australia Office

Hewlett-Packard Australia Ltd.
261 Stirling Highway
CLAREMONT, W.A. 6010
Tel: 383-2188
Telex: 93859
Cable: HEWPARAD Perth
A, CH, CM, E, MS, P

Sydney, New South Wales Office

Hewlett-Packard Australia Ltd.
17-23 Talavera Road
P.O. Box 308
NORTH RYDE, N.S.W. 2113
Tel: 887-1611
Telex: 21561
Cable: HEWPARAD Sydney
A, CH, CM, CS, E, MS, P

AUSTRIA

Hewlett-Packard Ges.m.b.h.
Grottenhofstrasse 94
Verkaufsburo Graz
A-8052 GRAZ
Tel: 291-5-66
Telex: 32375
CH, E*
Hewlett-Packard Ges.m.b.h.
Stanglhofweg 5
A-4020 LINZ
Tel: 0732 51585
CH

Hewlett-Packard Ges.m.b.h.
Liebigasse 1
P.O. Box 72
A-1222 VIENNA
Tel: (0222) 23-65-11-0
Telex: 134425 HEPA A
A, CH, CM, CS, E, MS, P

BAHRAIN

Green Salon
P.O. Box 557
BAHRAIN
Tel: 255503-255950
Telex: 84419
P

Wael Pharmacy
P.O. Box 648
BAHRAIN
Tel: 256123
Telex: 8550 WAEL BN
M, E

BELGIUM

Hewlett-Packard Belgium S.A./N.V.
Blvd de la Woluwe, 100
Woluwedal
B-1200 BRUSSELS
Tel: (02) 762-32-00
Telex: 23-494 paloben bru
A, CH, CM, CS, E, MP, P

BRAZIL

Hewlett-Packard do Brasil I.e.C.
Ltda.
Alameda Rio Negro, 750
Alphaville 06400 BARUERI SP
Tel: (11) 421-1311
Telex: 01 133872 HPBR-BR
Cable: HEWPACK Sao Paulo
A, CH, CM, CS, E, M, P
Hewlett-Packard do Brasil I.e.C.
Ltda.
Avenida Epitacio Pessoa, 4664
22471 RIO DE JANEIRO-RJ
Tel: (21) 286-0237
Telex: 021-21905 HPBR-BR
Cable: HEWPACK Rio de Janeiro
A, CH, CM, E, MS, P*

CANADA

Alberta
Hewlett-Packard (Canada) Ltd.
210, 7220 Fisher Street S.E.
CALGARY, Alberta T2H 2H8
Tel: (403) 253-2713
A, CH, CM, E*, MS, P*
Hewlett-Packard (Canada) Ltd.
11620A-168th Street
EDMONTON, Alberta T5M 3T9
Tel: (403) 452-3670
A, CH, CM, CS, E, MS, P*

British Columbia

Hewlett-Packard (Canada) Ltd.
10691 Shellbridge Way
RICHMOND,
British Columbia V6X 2W7
Tel: (604) 270-2277
Telex: 610-922-5059
A, CH, CM, CS, E*, MS, P*

Manitoba

Hewlett-Packard (Canada) Ltd.
380-550 Century Street
WINNIPEG, Manitoba R3H 0Y1
Tel: (204) 786-6701
A, CH, CM, E, MS, P*

New Brunswick

Hewlett-Packard (Canada) Ltd.
37 Sheadiac Road
MONCTON, New Brunswick E2B 2VQ
Tel: (506) 855-2841
CH**

Nova Scotia

Hewlett-Packard (Canada) Ltd.
P.O. Box 931
900 Windmill Road
DARTMOUTH, Nova Scotia B2Y 3Z6
Tel: (902) 469-7820
CH, CM, CS, E*, MS, P*

Ontario

Hewlett-Packard (Canada) Ltd.
552 Newbold Street
LONDON, Ontario N6E 2S5
Tel: (519) 686-9181
A, CH, CM, E*, MS, P*
Hewlett-Packard (Canada) Ltd.
6877 Goreway Drive
MISSISSAUGA, Ontario L4V 1M8
Tel: (416) 678-9430
A, CH, CM, CS, E, MP, P
Hewlett-Packard (Canada) Ltd.
2670 Queensview Dr.
OTTAWA, Ontario K2B 8K1
Tel: (613) 820-6483
A, CH, CM, CS, E*, MS, P*
Hewlett-Packard (Canada) Ltd.
220 Yorkland Blvd., Unit #11
WILLOWDALE, Ontario M2J 1R5
Tel: (416) 499-9333
CH

Quebec

Hewlett-Packard (Canada) Ltd.
17500 South Service Road
Trans-Canada Highway
KIRKLAND, Quebec H9J 2M5
Tel: (514) 697-4232
A, CH, CM, CS, E, MP, P*
Hewlett-Packard (Canada) Ltd.
Les Galeries du Vallon
2323 Du Versant Nord
STE. FOY, Quebec G1N 4C2
Tel: (418) 687-4570
CH

CHILE

Jorge Calcagni y Cia. Ltda.
Arturo Burhle 065
Casilla 16475
SANTIAGO 9
Tel: 222-0222
Telex: Public Booth 440001
A, CM, E, M

Olympia (Chile) Ltda.
Av. Rodrigo de Araya 1045
Casilla 256-V
SANTIAGO 21
Tel: 2-25-50-44
Telex: 340-892 OLYMP CK
Cable: Olympiachile Santiagochile
CH, CS, P

CHINA, People's Republic of

China Hewlett-Packard Rep. Office
P.O. Box 418
1A Lane 2, Luchang St.
Beiwei Rd., Xuanwu District
BEIJING
Tel: 33-1947, 33-7426
Telex: 22601 CTSHP CN
Cable: 1920
A, CH, CM, CS, E, P

COLOMBIA

Instrumentación
H. A. Langebaek & Kier S.A.
Carrera 7 No. 48-75
Apartado Aereo 6287
BOGOTA 1, D.E.
Tel: 287-8877
Telex: 44400 INST CO
Cable: AARIS Bogota
A, CM, E, M, PS, P

COSTA RICA

Científica Costarricense S.A.
Avenida 2, Calle 5
San Pedro de Montes de Oca
Apartado 10159
SAN JOSÉ
Tel: 24-38-20, 24-08-19
Telex: 2367 GALGUR CR
CM, E, MS, P

CYPRUS

Telexra Ltd.
P.O. Box 4809
14C Stasinou Avenue
NICOSIA
Tel: 62698
Telex: 2894 LEVIDO CY
E, M, P

DENMARK

Hewlett-Packard A/S
Datavej 52
DK-3460 Birkerød
Tel: (02) 81-66-40
Telex: 37409 hpas dk
A, CH, CM, CS, E, MS, P
Hewlett-Packard A/S
Navervej 1
DK-8600 SILKEBORG
Tel: (06) 82-71-66
Telex: 37409 hpas dk
CH, E

ECUADOR

CYEDE Cia. Ltda.
Avenida Eloy Alfaro 1749
Casilla 6423 CCI
QUITO
Tel: 450-975, 243-052
Telex: 2548 CYEDE ED
A, CM, E, P
Hospitalar S.A.
Robles 625
Casilla 3590
QUITO
Tel: 545-250, 545-122
Telex: 2485 HOSPPTL ED
Cable: HOSPITALAR-Quito
M

EGYPT

International Engineering Associates
24 Hussein Hegazi Street
Kasr-el-Aini
CAIRO
Tel: 23829, 21641
Telex: IEA UN 93830
CH, CS, E, M
Informatic For Systems
22 Talaat Harb Street
CAIRO
Tel: 759006
Telex: 93938 FRANK UN
CH, CS, P
Egyptian International Office
for Foreign Trade
P.O. Box 2558
CAIRO
Tel: 650021
Telex: 93337 EGPOR
P

EL SALVADOR

IPESA de El Salvador S.A.
29 Avenida Norte 1216
SAN SALVADOR
Tel: 26-6858, 26-6868
Telex: Public Booth 20107
A, CH, CM, CS, E, P

FINLAND

Hewlett-Packard Oy
Revontulentie 7
SF-02100 ESPOO 10
Tel: (90) 455-0211
Tel: 121563 hewpa sf
A, CH, CM, CS, E, MS, P
Hewlett-Packard Oy
Aatoksenkatu 10-C



SALES & SUPPORT OFFICES

Arranged Alphabetically by Country

SF-40720-72 JYVASKYLA
Tel: (94 1) 216318
CH
Hewlett-Packard Oy
Kainvuntie 1-C
SF-90140-14 OULU
Tel: (98 1) 338785
CH

FRANCE

Hewlett-Packard France
Z.I. Mercure B
Rue Berthelot
F-13763 Les Milles Cedex
AIX-EN-PROVENCE
Tel: (42) 59-41-02
Telex: 410770F
A,CH,E,MS,P*
Hewlett-Packard France
Boite Postale No. 503
F-25026 BESANCON
28 Rue de la Republique
F-25000 BESANCON
Tel: (81) 83-16-22
CH,M

Hewlett-Packard France
Bureau de Vente de Lyon
Chemin des Mouilles
Boite Postale 162
F-69130 ECULLY Cédex
Tel: (7) 833-81-25
Telex: 310617F
A,CH,CS,E,MP
Hewlett-Packard France
Immeuble France Evry
Tour Lorraine
Boulevard de France
F-91035 EVRY Cédex
Tel: (6) 077-96-60
Telex: 692315F
E

Hewlett-Packard France
5th Avenue Raymond Chanas
F-38320 EYBENS
Tel: (76) 25-81-41
Telex: 980124 HP GRENOB EYBE
CH

Hewlett-Packard France
Centre d'Affaire Paris-Nord
Bâtiment Ampère 5 étage
Rue de la Commune de Paris
Boite Postale 300
F-93153 LE BLANC MESNIL
Tel: (01) 865-44-52
Telex: 211032F
CH,CS,E,MS

Hewlett-Packard France
Parc d'Activités Cadera
Quartier Jean Mermoz
Avenue du President JF Kennedy
F-33700 MERIGNAC
Tel: (56) 34-00-84
Telex: 550105F
CH,E,MS

Hewlett-Packard France
32 Rue Lothaire
F-57000 METZ
Tel: (8) 765-53-50
CH

Hewlett-Packard France
Immeuble Les 3 B
Nouveau Chemin de la Garde
Z.A.C. de Bois Briand
F-44085 NANTES Cedex
Tel: (40) 50-32-22
CH**

Hewlett-Packard France
Zone Industrielle de Courtaubeouf
Avenue des Tropiques
F-91947 Les Ulis Cédex ORSAY
Tel: (6) 907-78-25
Telex: 600048F
A,CH,CM,CS,E,MP,P

Hewlett-Packard France
Paris Porte-Maillot
15, Avenue De L'Amiral Bruix
F-75782 PARIS 16
Tel: (1) 502-12-20
Telex: 613663F
CH,MS,P

Hewlett-Packard France
2 Allee de la Bourgonette
F-35100 RENNES
Tel: (99) 51-42-44
Telex: 740912F
CH,CM,E,MS,P*

Hewlett-Packard France
98 Avenue de Bretagne
F-76100 ROUEN
Tel: (35) 63-57-66 CH** ,CS

Hewlett-Packard France
4 Rue Thomas Mann
Boite Postale 56
F-67200 STRASBOURG
Tel: (88) 28-56-46
Telex: 890141F
CH,E,MS,P*

Hewlett-Packard France
Pericentre de la Cèpière
F-31081 TOULOUSE Cedex
Tel: (61) 40-11-12
Telex: 531639F
A,CH,CS,E,P*

Hewlett-Packard France
Immeuble Péricentre
F-59658 VILLENEUVE D'ASCQ Cedex
Tel: (20) 91-41-25
Telex: 160124F
CH,E,MS,P*

GERMAN FEDERAL REPUBLIC

Hewlett-Packard GmbH
Technisches Büro Berlin
Keithstrasse 2-4
D-1000 BERLIN 30
Tel: (030) 24-90-86
Telex: 018 3405 hpbld n
A,CH,E,M,P

Hewlett-Packard GmbH
Technisches Büro Böblingen
Herrenberger Strasse 110
D-7030 BÖBLINGEN
Tel: (07031) 667-1
Telex: bbn or
A,CH,CM,CS,E,MP,P

Hewlett-Packard GmbH
Technisches Büro Dusseldorf
Emanuel-Leutze-Strasse 1
D-4000 DUSSELDORF
Tel: (0211) 5971-1
Telex: 085/86 533 hpdd d
A,CH,CS,E,MS,P

Hewlett-Packard GmbH
Vertriebszentrale Frankfurt
Berner Strasse 117
Postfach 560 140
D-6000 FRANKFURT 56
Tel: (0611) 50-04-1
Telex: 04 13249 hpffm d
A,CH,CM,CS,E,MP,P

Hewlett-Packard GmbH
Technisches Büro Hamburg
Kapsladtring 5
D-2000 HAMBURG 60
Tel: (040) 63804-1
Telex: 021 63 032 hphh d
A,CH,CS,E,MS,P

Hewlett-Packard GmbH
Technisches Büro Hannover
Am Grossmarkt 6
D-3000 HANNOVER 91
Tel: (0511) 46-60-01
Telex: 092 3259
A,CH,CM,E,MS,P

Hewlett-Packard GmbH
Technisches Büro Mannheim
Rosslauer Weg 2-4
D-6800 MANNHEIM
Tel: (0621) 70050
Telex: 0462105
A,C,E

Hewlett-Packard GmbH
Technisches Büro Neu Ulm
Messerschmittstrasse 7
D-7910 NEU ULM
Tel: 0731-70241
Telex: 0712816 HP ULM-D
A,C,E*

Hewlett-Packard GmbH
Technisches Büro Nürnberg
Neumeyerstrasse 90
D-8500 NÜRNBERG
Tel: (0911) 52 20 83-87
Telex: 0623 860
CH,CM,E,MS,P

Hewlett-Packard GmbH
Technisches Büro München
Eschenstrasse 5
D-8028 TAUFKIRCHEN
Tel: (089) 6117-1
Telex: 0524985
A,CH,CM,E,MS,P

GREAT BRITAIN

Hewlett-Packard Ltd.
Trafalgar House
Navigation Road
ALTRINCHAM
Cheshire WA14 1NU
Tel: (061) 928-6422
Telex: 668068
A,CH,CS,E,M

Hewlett-Packard Ltd.
Oakfield House, Oakfield Grove
Clifton
BRISTOL BS8 2BN, Avon
Tel: (027) 38606
Telex: 444302
CH,M,P

Hewlett-Packard Ltd.
(Pinewood)
Nine Mile Ride
EASTHAMPTSTEAD
Wokingham
Berkshire, 3RG11 3LL
Tel: 3446 3100
Telex: 84-88-05
CH,CS,E

Hewlett-Packard Ltd.
Fourier House
257-263 High Street
LONDON COLNEJY
Herts., AL2 1HA, St. Albans
Tel: (0727) 24400
Telex: 1-8952716
CH,CS,E

Hewlett-Packard Ltd
Tradax House, St. Mary's Walk
MAIDENHEAD
Berkshire, SL6 1ST
Tel: (0628) 39151
CH,CS,E,P

Hewlett-Packard Ltd.
Quadrangle
106-118 Station Road
REDHILL, Surrey
Tel: (0737) 68655
Telex: 947234 CH,CS,E
Hewlett-Packard Ltd.
Avon House
435 Stratford Road
SHIRLEY, Solihull
West Midlands B90 4BL
Tel: (021) 745 8800
Telex: 339105
CH

Hewlett-Packard Ltd.
West End House 41
High Street, West End
SOUTHAMPTON
Hampshire SO3 3DO
Tel: (703) 886767
Telex: 477138
CH
Hewlett-Packard Ltd.
King Street Lane
WINNERSH, Wokingham
Berkshire RG11 5AR
Tel: (0734) 784774
Telex: 847178
A,CH,E,M

GREECE

Kostas Karayannis S.A.
8 Omirou Street
ATHENS 133
Tel: 32 30 303, 32 37 371
Telex: 215962 RKAR GR
A,CH,CM,CS,E,M,P
PLAISIO S.A.
G. Gerardos
24 Stournara Street
ATHENS
Tel: 36-11-160
Telex: 221871
P

GUATEMALA

IPESA
Avenida Reforma 3-48, Zona 9
GUATEMALA CITY
Tel: 316627, 314786
Telex: 4192 TELTRO GU
A,CH,CM,CS,E,M,P

HONG KONG

Hewlett-Packard Hong Kong, Ltd.
G.P.O. Box 795
5th Floor, Sun Hung Kai Centre
30 Harbour Road
HONG KONG
Tel: 5-8323211
Telex: 66678 HEWPA HX
Cable: HEWPACK HONG KONG
E,CH,CS,P
CET Ltd.
1402 Tung Way Mansion
199-203 Hennessy Rd.
Wanchia, **HONG KONG**
Tel: 5-729376
Telex: 85148 CET HX
CM
Schmidt & Co. (Hong Kong) Ltd.
Wing On Centre, 28th Floor
Connaught Road, C.
HONG KONG
Tel: 5-455644
Telex: 74766 SCHMX HX
A,M

ICELAND

Elding Trading Company Inc.
Hafnarvöll-Tryggvagotu
P.O. Box 895
IS-REYKJAVIK
Tel: 1-58-20, 1-63-03
M

INDIA

Blue Star Ltd.
Sabri Complex II Floor
24 Residency Rd.
BANGALORE 560 025
Tel: 55660
Telex: 0845-430
Cable: BLUESTAR
A,CH,CM,CS,E

Blue Star Ltd.
Band Box House
Prabhadevi
BOMBAY 400 025
Tel: 422-3101
Telex: 011-3751
Cable: BLUESTAR
A,M
Blue Star Ltd.
Sahas
414/2 Vir Savarkar Marg
Prabhadevi
BOMBAY 400 025
Tel: 422-6155
Telex: 011-4093
Cable: FROSTBLUE
A,CH,CM,CS,E,M
Blue Star Ltd.
Kalyan, 19 Vishwas Colony
Alkapuri, **BORODA, 390 005**
Tel: 65235
Cable: BLUE STAR
A
Blue Star Ltd.
7 Hare Street
CALCUTTA 700 001
Tel: 12-01-31
Telex: 021-7655
Cable: BLUESTAR
A,M
Blue Star Ltd.
133 Kodambakkam High Road
MADRAS 600 034
Tel: 82057
Telex: 041-379
Cable: BLUESTAR
A,M

Blue Star Ltd.
Bhandari House, 7th/8th Floors
91 Nehru Place
NEW DELHI 110 024
Tel: 682547
Telex: 031-2463
Cable: BLUESTAR
A,CH,CM,CS,E,M
Blue Star Ltd.
15/16 C Wellesley Rd.
PUNE 411 011
Tel: 22775
Cable: BLUE STAR
A

Blue Star Ltd.
2-2-47/1108 Bolarum Rd.
SECUNDERABAD 500 003
Tel: 72057
Telex: 0155-459
Cable: BLUEFROST
A,E

Blue Star Ltd.
T.C. 7/603 Poornima
Maruthankuzhi
TRIVANDRUM 695 013
Tel: 65799
Telex: 0884-259
Cable: BLUESTAR
E

INDONESIA

BERCA Indonesia P.T.
P.O.Box 496/JKT.
Jl. Abdul Muis 62
JAKARTA
Tel: 373009
Telex: 46748 BERSAL IA
Cable: BERSAL JAKARTA
P
BERCA Indonesia P.T.
Wisma Antara Bldg., 17th floor
JAKARTA
A,CS,E,M
BERCA Indonesia P.T.
P.O. Box 174/SBY.
Jl. Kutei No. 11
SURABAYA
Tel: 68172
Telex: 31146 BERSAL SB
Cable: BERSAL-SURABAYA
A*,E,M,P

**IRAQ**

Hewlett-Packard Trading S.A.
Service Operation
Al Mansoor City 98/3/7
BAGHDAD
Tel: 55 1-49-73
Telex: 212-455 HEPAIRAQ IK
CH,CS

IRELAND

Hewlett-Packard Ireland Ltd.
82/83 Lower Leeson St.
DUBLIN 2
Tel: (1) 60 88 00
Telex: 30439
A,CH,CM,CS,E,M,P
Cardiac Services Ltd.
Kilmore Road
Artane
DUBLIN 5
Tel: (01) 35 1820
Telex: 30439
M

ISRAEL

Eidan Electronic Instrument Ltd.
P.O. Box 1270
JERUSALEM 91000
16, *Ohaiav St.*
JERUSALEM 94467
Tel: 533 221, 553 242
Telex: 25231 AB/PAKRD IL
A
Electronics Engineering Division
Motorola Israel Ltd.
16 *Kremenetski Street*
P.O. Box 25016
TEL-AVIV 67899
Tel: 3-338973
Telex: 33569 Motil IL
Cable: BASTEL Tel-Aviv
CH,CM,CS,E,M,P

ITALY

Hewlett-Packard Italiana S.p.A.
Traversa 99C
Via Giulio Petroni, 19
I-70124 **BARI**
Tel: (080) 41-07-44
M
Hewlett-Packard Italiana S.p.A.
Via Martin Luther King, 38/111
I-40132 **BOLOGNA**
Tel: (051) 402394
Telex: 511630
CH,E,MS
Hewlett-Packard Italiana S.p.A.
Via Principe Nicola 43G/C
I-95126 **CATANIA**
Tel: (095) 37-10-87
Telex: 970291
C,P
Hewlett-Packard Italiana S.p.A.
Via G. Di Vittorio 9
I-20063 **CERNUSCO SUL NAVIGLIO**
Tel: (2) 903691
Telex: 334632
A,CH,CM,CS,E,MP,P
Hewlett-Packard Italiana S.p.A.
Via Nuova San Rocco a
Capodimonte, 62/A
I-80131 **NAPLES**
Tel: (081) 7413544
Telex: 710698
A,CH,E
Hewlett-Packard Italiana S.p.A.
Viale G. Modugno 33
I-16156 **GENOVA PEGLI**
Tel: (010) 68-37-07
Telex: 215238
E,C

Hewlett-Packard Italiana S.p.A.
Via Turazza 14
I-35100 **PADOVA**
Tel: (049) 664888
Telex: 430315
A,CH,E,MS
Hewlett-Packard Italiana S.p.A.
Viale C. Pavese 340
I-00144 **ROMA**
Tel: (06) 54831
Telex: 610514
A,CH,CM,CS,E,MS,P*
Hewlett-Packard Italiana S.p.A.
Corso Svizzera, 184
I-10149 **TORINO**
Tel: (011) 74 4044
Telex: 221079
CH,E

JAPAN

Yokogawa-Hewlett-Packard Ltd.
Inoue Building
1-21-8, Asahi-cho
ATSUGI, Kanagawa 243
Tel: (0462) 28-0451
CM,C*,E
Yokogawa-Hewlett-Packard Ltd.
Towa Building
2-2-3, Kaigandori, Chuo-ku
KOBE, 650, Hyogo
Tel: (078) 392-4791
C,E

Yokogawa-Hewlett-Packard Ltd.
Kumagaya Asahi Yasoji Bldg 4F
3-4 Chome Tsukuba
KUMAGAYA, Saitama 360
Tel: (0485) 24-6563
CH,CM,E

Yokogawa-Hewlett-Packard Ltd.
Asahi Shinbun Dai-ichi Seimei Bldg.,
2F
4-7 Hanabata-cho
KUMAMOTO-SHI, 860
Tel: (0963) 54-7311
CH,E

Yokogawa-Hewlett-Packard Ltd.
Shin Kyoto Center Bldg. 5F
614 Siokoji-cho
Nishiurugashi, Karasuma
Siokoji-dori, Shimogyo-ku
KYOTO 600
Tel: 075-343-0921
CH,E

Yokogawa-Hewlett-Packard Ltd.
Mito Mitsui Building
1-4-73, San-no-maru
MITO, Ibaragi 310
Tel: (0292) 25-7470
CH,CM,E

Yokogawa-Hewlett-Packard Ltd.
Sumitomo Seimei Nagoya Bldg.
2-14-19, Meieki-Minami,
Nakamura-ku
NAGOYA, 450 Aichi
Tel: (052) 571-5171
CH,CM,CS,E,MS

Yokogawa-Hewlett-Packard Ltd.
Chuo Bldg., 4th Floor
5-4-20 Nishinakajima,
Yodogawa-ku
OSAKA, 532
Tel: (06) 304-6021
Telex: YHPOSA 523-3624
A,CH,CM,CS,E,MP,P*

Yokogawa-Hewlett-Packard Ltd.
1-27-15, Yabe,
SAGAMIHARA Kanagawa, 229
Tel: 0427 59-1311
Yokogawa-Hewlett-Packard Ltd.
Shinjuku Dai-ichi Seimei 6F
2-7-1, Nishi Shinjuku
Shinjuku-ku, **TOKYO** 160
Tel: 03-348-4611-5
CH,E

Yokogawa-Hewlett-Packard Ltd.
3-29-21 Takaido-Higashi
Suginami-ku **TOKYO** 168
Tel: (03) 331-6111
Telex: 232-2024 YHPTOK
A,CH,CM,CS,E,MP,P*
Yokogawa-Hewlett-Packard Ltd.
Daiichi Asano Building 4F
5-2-8, Oodori,
UTSUNOMIYA, 320
Tochigi
Tel: (0286) 25-7155
CH, CS, E

Yokogawa-Hewlett-Packard Ltd.
Yasudaseimei Yokohama
Nishiguchi Bldg.
3-30-4 Tsuruya-cho
Kanagawa-ku
YOKOHAMA, Kanagawa, 221
Tel: (045) 312-1252
CH,CM,E

JORDAN

Mouasher Cousins Company
P.O. Box 1387
AMMAN
Tel: 24907, 39907
Telex: 21456 SABCO JO
CH,E,M,P

KENYA

ADCOM Ltd., Inc., Kenya
P.O. Box 30070
NAIROBI
Tel: 331955
Telex: 22639
E,M

KOREA

Samsung Electronics Computer
Division
76-561 Yeoksam-Dong
Kangnam-Ku
C.P.O. Box 2775
SEOUL
Tel: 555-7555, 555-5447
Telex: K27364 SAMSAN
A,CH,CM,CS,E,MP

KUWAIT

Al-Khaldiya Trading & Contracting
P.O. Box 830 Safat
KUWAIT
Tel: 42-4910, 41-1726
Telex: 22481 Areeg kt
CH,E,M
Photo & Cine Equipment
P.O. Box 270 Safat
KUWAIT
Tel: 42-2846, 42-3801
Telex: 22247 Matin-KT
P

LEBANON

G.M. Dolmadjian
Achrafieh
P.O. Box 165. 167
BEIRUT
Tel: 290293
MP**

LUXEMBOURG

Hewlett-Packard Belgium S.A./N.V.
Blvd de la Woluwe, 100
Woluwedal
B-1200 **BRUSSELS**
Tel: (02) 762-32-00
Telex: 23-494 paloben bru
A,CH,CM,CS,E,MP,P

MALAYSIA

Hewlett-Packard Sales (Malaysia)
Sdn. Bhd.
1st Floor, Bangunan British
American
Jalan Semantan, Damansara Heights
KUALA LUMPUR 23-03
Tel: 943022
Telex: MA31011
A,CH,E,M,P*
Protel Engineering
Lot 319, Satok Road
P.O. Box 1917
Kuching, SARAWAK
Tel: 53544
Telex: MA 70904 PROMAL
Cable: PROTELENG
A,E,M

MALTA

Philip Toledo Ltd.
Notabile Rd.
MRIEHEL
Tel: 447 47, 455 66
Telex: 649 Media MW
P

MEXICO

Hewlett-Packard Mexicana, S.A. de
C.V.
Av. Periferico Sur No. 6501
Tepepan, Xochimilco
MEXICO D.F. 16020
Tel: 676-4600
Telex: 17-74-507 HEWPACK MEX
A,CH,CS,E,MS,P
Effective November 1, 1982:
Hewlett-Packard Mexicana, S.A. de
C.V.
Ejercito Nacional #570
Colonia Granada
11560 **MEXICO, D.F.**
CH**
Hewlett-Packard Mexicana, S.A. de
C.V.
Rio Volga 600
Pte. Colonia del Valle
MONTERREY, N.L.
Tel: 78-42-93, 78-42-40, 78-42-41
Telex: 038-2410 HPMTY ME
CH
Effective Nov. 1, 1982
Ave. Colonia del Valle #409
Col. del Valle
Municipio de garza garcia
MONTERREY, N.V.
ECISA
Taihe 229, Piso 10
Polanco MEXICO D.F. 11570
Tel: 250-5391
Telex: 17-72755 ECE ME
M

MOROCCO

Dolbeau
81 rue Karatchi
CASABLANCA
Tel: 3041-82, 3068-38
Telex: 23051, 22822
E
Gerep
2 rue d'Agadir
Boite Postale 156
CASABLANCA
Tel: 272093, 272095
Telex: 23 739
P

NETHERLANDS

Hewlett-Packard Nederland B.V.
Van Heuven Goedhartlaan 121
NL 1181KK **AMSTELVEEN**
P.O. Box 667
NL 1180 AR **AMSTELVEEN**
Tel: (20) 47-20-21
Telex: 13 216
A,CH,CM,CS,E,MP,P

Hewlett-Packard Nederland B.V.
Bongerd 2
NL 2906VK **CAPPELLE, A/D IJssel**
P.O. Box 41
NL2900 AA **CAPELLE, IJssel**
Tel: (10) 51-64-44
Telex: 21261 HEPAC NL
A,CH,CS

NEW ZEALAND

Hewlett-Packard (N.Z.) Ltd.
169 Manukau Road
P.O. Box 26-189
Epsom, **AUCKLAND**
Tel: 687-159
Cable: HEWPACK Auckland
CH,CM,E,P*
Hewlett-Packard (N.Z.) Ltd.
4-12 Cruickshank Street
Kilbirnie, **WELLINGTON 3**
P.O. Box 9443
Courtenay Place, **WELLINGTON 3**
Tel: 877-199
Cable: HEWPACK Wellington
CH,CM,E,P
Northrop Instruments & Systems
Ltd.
369 Khyber Pass Road
P.O. Box 8602
AUCKLAND
Tel: 794-091
Telex: 60605
A,M

Northrop Instruments & Systems
Ltd.
110 Mandeville St.
P.O. Box 8388
CHRISTCHURCH
Tel: 486-928
Telex: 4203
A,M

Northrop Instruments & Systems
Ltd.
Sturdee House
85-87 Ghuznee Street
P.O. Box 2406
WELLINGTON
Tel: 850-091
Telex: NZ 3380
A,M

NORTHERN IRELAND

Cardiac Services Company
95A *Finaghy Road South*
BELFAST BT 10 OBV
Tel: (0232) 625-566
Telex: 747626
M

NORWAY

Hewlett-Packard Norge A/S
Folke Bernadottes vei 50
P.O. Box 3558
N-5033 **FYLLINGSDALEN** (Bergen)
Tel: (05) 16-55-40
Telex: 16621 hpnas n
CH,CS,E,MS
Hewlett-Packard Norge A/S
Østerdalen 18
P.O. Box 34
N-1345 **ØSTERAS**
Tel: (02) 17-11-80
Telex: 16621 hpnas n
A,CH,CM,CS,E,M,P

OMAN

Khimji Ramdas
P.O. Box 19
MUSCAT
Tel: 722225, 745601
Telex: 3289 BROKER MB MUSCAT
P



SALES & SUPPORT OFFICES

Arranged Alphabetically by Country

Suhail & Saud Bahwan
P.O. Box 169
MUSCAT
Tel: 734 201-3
Telex: 3274 BAHWAN MB

PAKISTAN
Mushko & Company Ltd.
1-B, Street 43
Sector F-8/1
ISLAMABAD
Tel: 26875
Cable: FEMUS Rawalpindi
A,E,M

Mushko & Company Ltd.
Oosman Chambers
Abdullah Haroon Road
KARACHI 0302
Tel: 511027, 512927
Telex: 2894 MUSKO PK
Cable: COOPERATOR Karachi
A,E,M,P*

PANAMA
Electrónico Balboa, S.A.
Calle Samuel Lewis, Ed. Alfa
Apartado 4929
PANAMA 5
Tel: 64-2700
Telex: 3483 ELECTRON PG
A,CM,E,M,P
Foto Internacional, S.A.
Colon Free Zone
Apartado 2068
COLON 3
Tel: 45-2333
Telex: 8626 IMPORT PG
P

PERU
Cía Electro Médica S.A.
Los Flamencos 145, San Isidro
Casilla 1030
LIMA 1
Tel: 41-4325, 41-3703
Telex: Pub. Booth 25306
A,CM,E,M,P

PHILIPPINES
The Online Advanced Systems Corporation
Rico House, Amoroso Cor. Herrera Street
Legaspi Village, Makati
P.O. Box 1510
Metro **MANILA**
Tel: 85-35-81, 85-34-91, 85-32-21
Telex: 3274 ONLINE
A,CH,CS,E,M
Electronic Specialists and Proponents Inc.
690-B Epifanio de los Santos Avenue
Cubao, **QUEZON CITY**
P.O. Box 2649 Manila
Tel: 98-96-81, 98-96-82, 98-96-83
Telex: 40018, 42000 ITT GLOBE
MACKAY BOOTH
P

PORTUGAL
Mundinter
Intercambio Mundial de Comércio
S.a.r.l.
P.O. Box 2761
Av. Antonio Augusto de Aguiar 138
P-LISBON
Tel: (19) 53-21-31, 53-21-37
Telex: 16691 munter p
M

Soquimica
Av. da Liberdade, 220-2
1298 LISBON Codex
Tel: 56 21 81/2/3
Telex: 13316 SABASA P
Telectra-Empresa Técnica de Equipamentos Eléctricos S.a.r.l.
Rua Rodrigo da Fonseca 103
P.O. Box 2531
P-LISBON 1
Tel: (19) 68-60-72
Telex: 12598
CH,CS,E,P

PUERTO RICO
Hewlett-Packard Puerto Rico
P.O. Box 4407
CAROLINA, Puerto Rico 00628
Calle 272 Edificio 203
Urb. Country Club
RIO PIEDRAS, Puerto Rico 00924
Tel: (809) 762-7255
A,CH,CS

QATAR
Nasser Trading & Contracting
P.O. Box 1563
DOHA
Tel: 22170, 23539
Telex: 4439 NASSER DH
M
Computeabia
P.O. Box 2750
DOHA
Tel: 883555
Telex: 4806 CHPARB
P

Eastern Technical Services
P.O. Box 4747
DOHA
Tel: 329 993
Telex: 4156 EASTEC DH

SAUDI ARABIA
Modern Electronic Establishment
Hewlett-Packard Division
P.O. Box 281
Thuobah
AL-KHOBAR
Tel: 864-46 78
Telex: 671 106 HPMEEK SJ
Cable: ELECTA AL-KHOBAR
CH,CS,E,M,P
Modern Electronic Establishment
Hewlett-Packard Division
P.O. Box 1228
Redec Plaza, 6th Floor
JEDDAH
Tel: 644 38 48
Telex: 402712 FARNAS SJ
Cable: ELECTA JEDDAH
CH,CS,E,M,P
Modern Electronic Establishment
Hewlett-Packard Division
P.O. Box 2728
RIYADH
Tel: 491-97 15, 491-63 87
Telex: 202049 MEERYD SJ
CH,CS,E,M,P

SCOTLAND
Hewlett-Packard Ltd.
Royal Bank Buildings
Swan Street
BRECHIN, Angus, Scotland
Tel: (03562) 3101-2
CH
Hewlett-Packard Ltd.
SOUTH QUEENSFERRY
West Lothian, EH30 9GT
GB-Scotland
Tel: (031) 3311188
Telex: 72682
A,CH,CM,CS,E,M

SINGAPORE
Hewlett-Packard Singapore (Pty.) Ltd.
P.O. Box 58 Alexandra Post Office
SINGAPORE, 9115
6th Floor, Inchcape House
450-452 Alexandra Road
SINGAPORE 0511
Tel: 631788
Telex: HPSGSO RS 34209
Cable: HEWPACK, Singapore
A,CH,CS,E,MS,P
Dynamar International Ltd.
Unit 05-11 Block 6
Kolam Ayer Industrial Estate
SINGAPORE 1334
Tel: 747-6188
Telex: RS 26283
CM

SOUTH AFRICA
Hewlett-Packard So Africa (Pty.) Ltd.
P.O. Box 120
Howard Place
Pine Park Center, Forest Drive,
Pinelands
CAPE PROVINCE 7405
Tel: 53-7954
Telex: 57-20006
A,CH,CM,E,MS,P
Hewlett-Packard So Africa (Pty.) Ltd.
P.O. Box 37099
92 Overport Drive
DURBAN 4067
Tel: 28-4178, 28-4179, 28-4110
Telex: 6-22954
CH,CM
Hewlett-Packard So Africa (Pty.) Ltd.
6 Linton Arcade
511 Cape Road
Linton Grange
PORT ELIZABETH 6001
Tel: 041-302148
CH

Hewlett-Packard So Africa (Pty.) Ltd.
P.O. Box 33345
Glenstantia 0010 **TRANSVAAL**
1st Floor East
Constantia Park Ridge Shopping
Centre
Constantia Park
PRETORIA
Tel: 982043
Telex: 32163
CH,E
Hewlett-Packard So Africa (Pty.) Ltd.
Private Bag Wendywood
SANDTON 2144
Tel: 802-5111, 802-5125
Telex: 4-20877
Cable: HEWPACK Johannesburg
A,CH,CM,CS,E,MS,P

SPAIN
Hewlett-Packard Española S.A.
c/Entenza, 321
E-BARCELONA 29
Tel: (3) 322-24-51, 321-73-54
Telex: 52603 hpbee
A,CH,CS,E,MS,P
Hewlett-Packard Española S.A.
c/San Vicente S/N
Edificio Albia II, 7 B
E-BILBAO 1
Tel: (4) 23-8306, (4) 23-8206
A,CH,E,MS
Hewlett-Packard Española S.A.
Calle Jerez 3
E-MADRID 16
Tel: (1) 458-2600
Telex: 23515 hpe
A,CM,E

Hewlett-Packard Española S.A.
c/o Costa Brava 13
Colonia Mirasierra
E-MADRID 34
Tel: (1) 734-8061, (1) 734-1162
CH,CS,M

Hewlett-Packard Española S.A.
Av Ramón y Cajal 1-9
Edificio Sevilla 1,
E-SEVILLA 5
Tel: 64-44-54, 64-44-58
Telex: 72933
A,CS,MS,P
Hewlett-Packard Española S.A.
C/Ramon Gorrillo, 1 (Entlo.3)
E-VALENCIA 10
Tel: 361-1354, 361-1358
CH,P

SWEDEN
Hewlett-Packard Sverige AB
Sunnanvagen 14K
S-22226 LUND
Tel: (046) 13-69-79
Telex: (854) 17886 (via SPÅNGA office)
CH
Hewlett-Packard Sverige AB
Vastra Vintergatan 9
S-70344 ÖREBRO
Tel: (19) 10-48-80
Telex: (854) 17886 (via SPÅNGA office)
CH

Hewlett-Packard Sverige AB
Skalholtsgatan 9, Kista
Box 19
S-16393 SPÅNGA
Tel: (08) 750-2000
Telex: (854) 17886
A,CH,CM,CS,E,MS,P
Hewlett-Packard Sverige AB
Frötällsgatan 30
S-42132 VÄSTRA-FRÖLUNDA
Tel: (031) 49-09-50
Telex: (854) 17886 (via SPÅNGA office)
CH,E,P

SWITZERLAND
Hewlett-Packard (Schweiz) AG
Clarastrasse 12
CH-4058 BASLE
Tel: (61) 33-59-20
A
Hewlett-Packard (Schweiz) AG
Bahnhofweg 44
CH-3018 BERN
Tel: (031) 56-24-22
CH
Hewlett-Packard (Schweiz) AG
47 Avenue Blanc
CH-1202 GENEVA
Tel: (022) 32-48-00
CH,CM,CS

Hewlett-Packard (Schweiz) AG
19 Chemin Château Bloc
CH-1219 LE LIGNON-Geneva
Tel: (022) 96-03-22
Telex: 27333 hpag ch
Cable: HEWPACKAG Geneva
A,E,MS,P
Hewlett-Packard (Schweiz) AG
Allmend 2
CH-8967 WIDEN
Tel: (57) 31 21 11
Telex: 53933 hpag ch
Cable: HPAG CH
A,CH,CM,CS,E,MS,P

SYRIA
General Electronic Inc.
Nuri Basha
P.O. Box 5781
DAMASCUS
Tel: 33-24-87
Telex: 11216 ITIKAL SY
Cable: ELECTROBOR DAMASCUS
E

Middle East Electronics
Place Azmé
Boite Postale 2308
DAMASCUS
Tel: 334592
Telex: 11304 SATACO SY
M,P

TAIWAN
Hewlett-Packard Far East Ltd.
Kaohsiung Office
2/F 68-2, Chung Cheng 3rd Road
KAOHSIUNG
Tel: 241-2318, 261-3253
CH,CS,E
Hewlett-Packard Far East Ltd.
Taiwan Branch
5th Floor
205 Tun Hwa North Road
TAIPEI
Tel:(02) 751-0404
Cable:HEWPACK Taipei
A,CH,CM,CS,E,M,P
Ing Lih Trading Co.
3rd Floor, 7 Jen-Ai Road, Sec. 2
TAIPEI 100
Tel: (02) 3948191
Cable: INGLIH TAIPEI
A

THAILAND
Unimesa
30 Palpong Ave., Suriwong
BANGKOK 5
Tel: 234 091, 234 092
Telex: 84439 Simonco TH
Cable: UNIMESA Bangkok
A,CH,CS,E,M
Bangkok Business Equipment Ltd.
5/5-6 Dejo Road
BANGKOK
Tel: 234-8670, 234-8671
Telex: 87669-BEQUIPT TH
Cable: BUSIQUIPT Bangkok
P

TRINIDAD & TOBAGO
Caribbean Telecoms Ltd.
50/A Jerningham Avenue
P.O. Box 732
PORT-OF-SPAIN
Tel: 62-44213, 62-44214
Telex: 235,272 HUGCO WG
A,CM,E,M,P

TUNISIA
Tunisie Electronique
31 Avenue de la Liberté
TUNIS
Tel: 280-144
E,P
Corema
1 ter. Av. de Carthage
TUNIS
Tel: 253-821
Telex: 12319 CABAM TN
M

TURKEY
Teknim Company Ltd.
Iran Caddesi No. 7
Kavaklidere, **ANKARA**
Tel: 275800
Telex: 42155 TKNM TR
E
E.M.A.
Medina Eldem Sokak No.4/16
Yüksel Caddesi
ANKARA
Tel: 175 622
M

UNITED ARAB EMIRATES
Emilac Ltd.
P.O. Box 1641
SHARJAH
Tel: 354121, 354123
Telex: 68136 Emilac Sh
CH,CS,E,M,P



UNITED KINGDOM

see: GREAT BRITAIN

NORTHERN IRELAND

SCOTLAND

UNITED STATES

Alabama

Hewlett-Packard Co.
700 Century Park South
Suite 128
BIRMINGHAM, AL 35226
Tel: (205) 822-6802
CH,MP

Hewlett-Packard Co.
P.O. Box 4207
8290 Whitesburg Drive, S.E.
HUNTSVILLE, AL 35802
Tel: (205) 881-4591
CH,CM,CS,E,M*

Alaska

Hewlett-Packard Co.
1577 "C" Street, Suite 252
ANCHORAGE, AK 99501
Tel: (907) 276-5709
CH*

Arizona

Hewlett-Packard Co.
2336 East Magnolia Street
PHOENIX, AZ 85034
Tel: (602) 273-8000
A,CH,CM,CS,E,MS

Hewlett-Packard Co.
2424 East Aragon Road
TUCSON, AZ 85706
Tel: (602) 889-4631
CH,E,MS**

Arkansas

Hewlett-Packard Co.
P.O. Box 5646
Brady Station
LITTLE ROCK, AR 72215
111 N. Filmore
LITTLE ROCK, AR 72205
Tel: (501) 664-8773, 376-1844
MS

California

Hewlett-Packard Co.
99 South Hill Dr.
BRISBANE, CA 94005
Tel: (415) 330-2500
CH,CS

Hewlett-Packard Co.
7621 Canoga Avenue
CANOGA PARK, CA 91304
Tel: (213) 702-8300
A,CH,CS,E,P

Hewlett-Packard Co.
5060 Clinton Avenue
FRESNO, CA 93727
Tel: (209) 252-9652
MS

Hewlett-Packard Co.
P.O. Box 4230
1430 East Orangethorpe
FULLERTON, CA 92631
Tel: (714) 870-1000
CH,CM,CS,E,MP

Hewlett-Packard Co.
320 S. Kellogg, Suite B
GOLETA, CA 93117
Tel: (805) 967-3405
CH

Hewlett-Packard Co.
5400 W. Rosecrans Boulevard
LAWDALE, CA 90260
P.O. Box 92105
LOS ANGELES, CA 90009
Tel: (213) 970-7500
Telex: 910-325-6608
CH,CM,CS,MP

Hewlett-Packard Co.
3200 Hillview Avenue
PALO ALTO, CA 94304
Tel: (415) 857-8000
CH,CS,E

Hewlett-Packard Co.
P.O. Box 15976 (95813)
4244 So. Market Court, Suite A
SACRAMENTO, CA 95834
Tel: (916) 929-7222
A*,CH,CS,E,MS

Hewlett-Packard Co.
9606 Aero Drive
P.O. Box 23333
SAN DIEGO, CA 92123
Tel: (714) 279-3200
CH,CM,CS,E,MP

Hewlett-Packard Co.
2305 Camino Ramon "C"
SAN RAMON, CA 94583
Tel: (415) 838-5900
CH,CS

Hewlett-Packard Co.
P.O. Box 4230
Fullerton, CA 92631
363 Brookhollow Drive
SANTA ANA, CA 92705
Tel: (714) 641-0977
A,CH,CM,CS,MP

Hewlett-Packard Co.
Suite A
5553 Hollister
SANTA BARBARA, CA 93111
Tel: (805) 964-3390

Hewlett-Packard Co.
3003 Scott Boulevard
SANTA CLARA, CA 95050
Tel: (408) 988-7000
A,CH,CM,CS,E,MP

Hewlett-Packard Co.
5703 Corsa Avenue
WESTLAKE VILLAGE, CA 91362
Tel: (213) 706-6800
E*,CH*,CS*

Colorado

Hewlett-Packard Co.
24 Inverness Place, East
ENGLEWOOD, CO 80112
Tel: (303) 771-3455
Telex: 910-935-0785
A,CH,CM,CS,E,MS

Connecticut

Hewlett-Packard Co.
47 Barnes Industrial Road South
P.O. Box 5007
WALLINGFORD, CT 06492
Tel: (203) 265-7801
A,CH,CM,CS,E,MS

Florida

Hewlett-Packard Co.
P.O. Box 24210 (33307)
2901 N.W. 62nd Street
FORT LAUDERDALE, FL 33307
Tel: (305) 973-2600
CH,CS,E,MP

Hewlett-Packard Co.
4080 Woodcock Drive, # 132
Brownell Building
JACKSONVILLE, FL 32207
Tel: (904) 398-0663
C*,E*,MS**

Hewlett-Packard Co.
1101 W. Hibiscus Ave., Suite E210
MELBOURNE, FL 32901
Tel: (305) 729-0704
E*

Hewlett-Packard Co.
P.O. Box 13910 (32859)
6177 Lake Ellenor Drive
ORLANDO, FL 32809
Tel: (305) 859-2900
A,CH,CM,CS,E,MS

Hewlett-Packard Co.
6425 N. Pensacola Blvd.
Suite 4, Building 1
P.O. Box 12826
PENSACOLA, FL 32575
Tel: (904) 476-8422
A,MS

Hewlett-Packard Co.
5750B N. Hoover Blvd., Suite 123
TAMPA, FL 33614
Tel: (813) 884-3282
A*,CH,CM,CS,E*,M*

Georgia

Hewlett-Packard Co.
P.O. Box 105005
ATLANTA, GA 30348
2000 South Park Place
ATLANTA, GA 30339
Tel: (404) 955-1500
Telex: 810-766-4890
A,CH,CM,CS,E,MP

Hewlett-Packard Co.
P.O. Box 816 (80903)
2531 Center West Parkway
Suite 110
AUGUSTA, GA 30904
Tel: (404) 736-0592
MS

Hewlett-Packard Co.
200-E Montgomery Cross Rds.
SAVANNAH, GA 31401
Tel: (912) 925-5358
CH**

Hewlett-Packard Co.
P.O. Box 2103
WARNER ROBINS, GA 31099
1172 N. Davis Drive
WARNER ROBINS, GA 31093
Tel: (912) 923-8831
E

Hawaii

Hewlett-Packard Co.
Kawaiahao Plaza, Suite 190
567 South King Street
HONOLULU, HI 96813
Tel: (808) 526-1555
A,CH,E,MS

Illinois

Hewlett-Packard Co.
211 Prospect Road, Suite C
BLOOMINGTON, IL 61701
Tel: (309) 662-9411
CH,MS**

Hewlett-Packard Co.
1100 31st Street, Suite 100
DOWNERS GROVE, IL 60515
Tel: (312) 960-5760
CH,CS

Hewlett-Packard Co.
5201 Tollview Drive
ROLLING MEADOWS, IL 60008
Tel: (312) 255-9800
A,CH,CM,CS,E,MP

Indiana

Hewlett-Packard Co.
P.O. Box 50807
7301 No. Shadeland Avenue
INDIANAPOLIS, IN 46250
Tel: (317) 842-1000
A,CH,CM,CS,E,MS

Iowa

Hewlett-Packard Co.
1776 22nd Street, Suite 1
WEST DES MOINES, IA 50265
Tel: (515) 224-1435
CH,MS**

Hewlett-Packard Co.
2415 Heinz Road
IOWA CITY, IA 52240
Tel: (319) 351-1020
CH,E*,MS

Kansas

Hewlett-Packard Co.
1644 S. Rock Road
WICHITA, KA 67207
Tel: (316) 684-8491
CH

Kentucky

Hewlett-Packard Co.
10300 Linn Station Road
Suite 100
LOUISVILLE, KY 40223
Tel: (502) 426-0100
A,CH,CS,MS

Louisiana

Hewlett-Packard Co.
8126 Calais Bldg.
BATON ROUGE, LA 70806
Tel: (504) 467-4100
A**,CH**

Hewlett-Packard Co.
P.O. Box 1449
KENNER, LA 70062
160 James Drive East
DESTAHAN, LA 70047
Tel: (504) 467-4100
A,CH,CS,E,MS

Maryland

Hewlett-Packard Co.
7121 Standard Drive
HANOVER, MD 21076
Tel: (301) 796-7700
Telex: 710-862-1943
Eff. Dec. 1, 1982
3701 Koppers St.
BALTIMORE, MD 21227
Tel: (301) 644-5800
A,CH,CM,CS,E,MS

Hewlett-Packard Co.
2 Choke Cherry Road
ROCKVILLE, MD 20850
Tel: (301) 948-6370
A,CH,CM,CS,E,MP

Massachusetts

Hewlett-Packard Co.
32 Hartwell Avenue
LEXINGTON, MA 02173
Tel: (617) 861-8960
A,CH,CM,CS,E,MP

Hewlett-Packard Co.
4326 Cascade Road S.E.
GRAND RAPIDS, MI 49506
Tel: (616) 957-1970
CH,CS,MS

Hewlett-Packard Co.
1771 W. Big Beaver Road
TROY, MI 48084
Tel: (313) 643-6474
CH,CS

Minnesota

Hewlett-Packard Co.
2025 W. Larpenteur Ave.
ST. PAUL, MN 55113
Tel: (612) 644-1100
A,CH,CM,CS,E,MP

Mississippi

Hewlett-Packard Co.
P.O. Box 5028
1675 Lakeland Drive
JACKSON, MS 39216
Tel: (601) 982-9363
MS

Missouri

Hewlett-Packard Co.
11131 Colorado Avenue
KANSAS CITY, MO 64137
Tel: (816) 763-8000
A,CH,CM,CS,E,MS

Hewlett-Packard Co.
P.O. Box 27307
1024 Executive Parkway
ST. LOUIS, MO 63141
Tel: (314) 878-0200
A,CH,CS,E,MP
Effective September 1982:
13001 Hollenberg Drive
BRIDGETON, MO 63044

Nebraska

Hewlett-Packard
7101 Mercy Road
Suite 101, IBX Building
OMAHA, NE 68106
Tel: (402) 392-0948
CM,MS

Nevada

Hewlett-Packard Co.
Suite D-130
5030 Paradise Blvd.
LAS VEGAS, NV 89119
Tel: (702) 736-6610
MS**

New Jersey

Hewlett-Packard Co.
W120 Century Road
PARAMUS, NJ 07652
Tel: (201) 265-5000
A,CH,CM,CS,E,MP
Hewlett-Packard Co.
60 New England Av. West
PISCATAWAY, NJ 08854
Tel: (201) 981-1199
A,CH,CM,CS,E

New Mexico

Hewlett-Packard Co.
P.O. Box 11634
ALBUQUERQUE, NM 87112
11300 Lomas Blvd., N.E.
ALBUQUERQUE, NM 87123
Tel: (505) 292-1330
Telex: 910-989-1185
CH,CS,E,MS

New York

Hewlett-Packard Co.
5 Computer Drive South
ALBANY, NY 12205
Tel: (518) 458-1550
Telex: 710-444-4691
A,CH,E,MS
Hewlett-Packard Co.
P.O. Box 297
9600 Main Street
CLARENCE, NY 14031
Tel: (716) 759-8621
Telex: 710-523-1893
CH

Hewlett-Packard Co.
200 Cross Keys Office
FAIRPORT, NY 14450
Tel: (716) 223-9950
Telex: 510-253-0092
CH,CM,CS,E,MS

Hewlett-Packard Co.
7641 Henry Clay Blvd.
LIVERPOOL, NY 13088
Tel: (315) 451-1820
A,CH,CM,E,MS

Hewlett-Packard Co.
No. 1 Pennsylvania Plaza
55th Floor
34th Street & 8th Avenue
NEW YORK, NY 10119
Tel: (212) 971-0800
CH,CS,E*,M*



SALES & SUPPORT OFFICES

Arranged Alphabetically by Country

Hewlett-Packard Co.
250 Westchester Avenue
WHITE PLAINS, NY 10604
CM,CH,CS,E

Hewlett-Packard Co.
3 Crossways Park West
WOODBURY, NY 11797
Tel: (516) 921-0300
Telex: 510-221-2183
A,CH,CM,CS,E,MS

North Carolina

Hewlett-Packard Co.
4915 Water's Edge Drive
Suite 160
RALEIGH, NC 27606
Tel: (919) 851-3021
C,M

Hewlett-Packard Co.
P.O. Box 26500
5605 Roanne Way
GREENSBORO, NC 27450
Tel: (919) 852-1800
A,CH,CM,CS,E,MS

Ohio

Hewlett-Packard Co.
9920 Carver Road
CINCINNATI, OH 45242
Tel: (513) 891-9870
CH,CS,MS

Hewlett-Packard Co.
16500 Sprague Road
CLEVELAND, OH 44130
Tel: (216) 243-7300
Telex: 810-423-9430
A,CH,CM,CS,E,MS

Hewlett-Packard Co.
962 Crupper Ave.
COLUMBUS, OH 43229
Tel: (614) 436-1041
CH,CM,CS,E*

Hewlett-Packard Co.
P.O. Box 280
330 Progress Rd.
DAYTON, OH 45449
Tel: (513) 859-8202
A,CH,CM,E*,MS

Oklahoma

Hewlett-Packard Co.
P.O. Box 32008
Oklahoma City, OK 73123
1503 W. Gore Blvd., Suite #2
LAWTON, OK 73505
Tel: (405) 248-4248
C

Hewlett-Packard Co.
P.O. Box 32008
OKLAHOMA CITY, OK 73123
304 N. Meridian Avenue, Suite A
OKLAHOMA CITY, OK 73107
Tel: (405) 946-9499
A*,CH,E*,MS

Hewlett-Packard Co.
Suite 121
9920 E. 42nd Street
TULSA, OK 74145
Tel: (918) 665-3300
A**,CH,CS,M*

Oregon

Hewlett-Packard Co.
1500 Valley River Drive
Suite 330
EUGENE, OR 97401
Tel: (503) 683-8075
C

Hewlett-Packard Co.
9255 S. W. Pioneer Court
WILSONVILLE, OR 97070
Tel: (503) 682-8000
A,CH,CS,E*,MS

Pennsylvania

Hewlett-Packard Co.
1021 8th Avenue
King of Prussia Industrial Park
KING OF PRUSSIA, PA 19406
Tel: (215) 265-7000
Telex: 510-660-2670
A,CH,CM,CS,E,MP

Hewlett-Packard Co.
111 Zeta Drive
PITTSBURGH, PA 15238
Tel: (412) 782-0400
A,CH,CS,E,MP

South Carolina

Hewlett-Packard Co.
P.O. Box 21708
Brookside Park, Suite 122
1 Harbison Way
COLUMBIA, SC 29210
Tel: (803) 732-0400
CH,E,MS

Hewlett-Packard Co.
Koger Executive Center
Chesterfield Bldg., Suite 124
GREENVILLE, SC 29615
Tel: (803) 748-5601
C

Tennessee

Hewlett-Packard Co.
P.O. Box 22490
224 Peters Road
Suite 102
KNOXVILLE, TN 37922
Tel: (615) 691-2371
A*,CH,MS

Hewlett-Packard Co.
3070 Directors Row
MEMPHIS, TN 38131
Tel: (901) 346-8370
A,CH,MS

Hewlett-Packard Co.
230 Great Circle Road
Suite 216
NASHVILLE, TN 32228
Tel: (615) 255-1271
MS**

Texas

Hewlett-Packard Co.
Suite 310W
7800 Shoal Creek Blvd.
AUSTIN, TX 78757
Tel: (512) 459-3143
E

Hewlett-Packard Co.
Suite C-110
4171 North Mesa
EL PASO, TX 79902
Tel: (915) 533-3555, 533-4489
CH,E*,MS**

Hewlett-Packard Co.
5020 Mark IV Parkway
FORT WORTH, TX 76106
Tel: (817) 625-6361
CH,CS*

Hewlett-Packard Co.
P.O. Box 42816
HOUSTON, TX 77042
10535 Harwin Street
HOUSTON, TX 77036
Tel: (713) 776-6400
A,CH,CM,CS,E,MP

Hewlett-Packard Co.
3309 67th Street
Suite 24
LUBBOCK, TX 79413
Tel: (806) 799-4472
M

Hewlett-Packard Co.
417 Nolana Gardens, Suite C
P.O. Box 2256
McALLEN, TX 78501
Tel: (512) 781-3226
CH,CS

Hewlett-Packard Co.
P.O. Box 1270
RICHARDSON, TX 75080
930 E. Campbell Rd.
RICHARDSON, TX 75081
Tel: (214) 231-6101
A,CH,CM,CS,E,MP

Hewlett-Packard Co.
P.O. Box 32993
SAN ANTONIO, TX 78216
1020 Central Parkway South
SAN ANTONIO, TX 78232
Tel: (512) 494-9336
CH,CS,E,MS

Utah

Hewlett-Packard Co.
P.O. Box 26626
3530 W. 2100 South
SALT LAKE CITY, UT 84119
Tel: (801) 974-1700
A,CH,CS,E,MS

Virginia

Hewlett-Packard Co.
P.O. Box 9669
2914 Hungary Spring Road
RICHMOND, VA 23228
Tel: (804) 285-3431
A,CH,CS,E,MS

Hewlett-Packard Co.
3106 Peters Creek Road, N.W.
ROANOKE, VA 24019
Tel: (703) 563-2205
CH,E**

Hewlett-Packard Co.
5700 Thurston Avenue
Suite 111
VIRGINIA BEACH, VA 23455
Tel: (804) 460-2471
CH,MS

Washington

Hewlett-Packard Co.
15815 S.E. 37th Street
BELLEVUE, WA 98006
Tel: (206) 643-4000
A,CH,CM,CS,E,MP

Hewlett-Packard Co.
Suite A
708 North Argonne Road
SPOKANE, WA 99206
Tel: (509) 922-7000
CH,CS

West Virginia

Hewlett-Packard Co.
4604 MacCorkle Ave., S.E.
CHARLESTON, WV 25304-4297
Tel: (304) 925-0492
A,MS

Wisconsin

Hewlett-Packard Co.
150 S. Sunny Slope Road
BROOKFIELD, WI 53005
Tel: (414) 784-8800
A,CH,CS,E*,MP

URUGUAY

Pablo Ferrando S.A.C. e L.
Avenida Italia 2877
Casilla de Correo 370
MONTEVIDEO
Tel: 80-2586
Telex: Public Booth 901
A,CM,E,M

Guillermo Kraft del Uruguay S.A.
Av. Lib. Brig. Gral. Lavalleja 2083
MONTEVIDEO
Tel: 234588, 234808, 208830
Telex: 22030 ACTOUR UY
P

VENEZUELA

Hewlett-Packard de Venezuela C.A.
3A Transversal Los Ruices Norte
Edificio Segre
Apartado 50933
CARACAS 1071
Tel: 239-4133
Telex: 25146 HEWPACK
A,CH,CS,E,MS,P
Colmodio S.A.
Este 2 - Sur 21 No. 148
Apartado 1053
CARACAS 1010
Tel: 571-3511
Telex: 21529 COLMODIO
M

ZIMBABWE

Field Technical Sales
45 Kelvin Road, North
P.B. 3458
SALISBURY
Tel: 705 231
Telex: 4-122 RH
C,E,M,P

Headquarters offices

If there is no sales office listed for your area, contact one of these headquarters offices.

NORTH/CENTRAL

AFRICA

Hewlett-Packard S.A.
7 Rue du Bois-du-Lan
CH-1217 MEYRIN 2, Switzerland
Tel: (022) 98-96-51
Telex: 27835 hpse
Cable: HEWPACKSA Geneve

ASIA

Hewlett-Packard Asia Ltd.
6th Floor, Sun Hung Kai Center
30 Harbor Rd.
G.P.O. Box 795
HONG KONG
Tel: 5-832 3211
Telex: 66678 HEWPA HX
Cable: HEWPACK HONG KONG

CANADA

Hewlett-Packard (Canada) Ltd.
6877 Goreway Drive
MISSISSAUGA, Ontario L4V 1M8
Tel: (416) 678-9430
Telex: 610-492-4246

EASTERN EUROPE

Hewlett-Packard Ges.m.b.H.
Liebiggasse 1
P.O.Box 72
A-1222 VIENNA, Austria
Tel: (222) 2365110
Telex: 1 3 4425 HEPA A

NORTHERN EUROPE

Hewlett-Packard S.A.
Uilenstede 475
NL-1183 AG AMSTELVEEN
The Netherlands
P.O.Box 999
NL-1180 AZ AMSTELVEEN
The Netherlands
Tel: 20 437771 *

OTHER EUROPE

Hewlett-Packard S.A.
7 Rue du Bois-du-Lan
CH-1217 MEYRIN 2, Switzerland
Tel: (022) 98-96-51
Telex: 27835 hpse
Cable: HEWPACKSA Geneve
(Offices in the World Trade Center)

MEDITERRANEAN AND

MIDDLE EAST

Hewlett-Packard S.A.
Mediterranean and Middle East
Operations
Atrina Centre
32 Kifissias Ave.
Maroussi, ATHENS, Greece
Tel: 682 88 11
Telex: 21-6588 HPAT GR
Cable: HEWPACKSA Athens

EASTERN USA

Hewlett-Packard Co.
4 Choke Cherry Road
Rockville, MD 20850
Tel: (301) 258-2000

MIDWESTERN USA

Hewlett-Packard Co.
5201 Tollview Drive
ROLLING MEADOWS, IL 60008
Tel: (312) 255-9800

SOUTHERN USA

Hewlett-Packard Co.
P.O. Box 105005
450 Interstate N. Parkway
ATLANTA, GA 30339
Tel: (404) 955-1500

WESTERN USA

Hewlett-Packard Co.
3939 Lankersim Blvd.
LOS ANGELES, CA 91604
Tel: (213) 877-1282

OTHER INTERNATIONAL AREAS

Hewlett-Packard Co.
Intercontinental Headquarters
3495 Deer Creek Road
PALO ALTO, CA 94304
Tel: (415) 857-1501
Telex: 034-8300
Cable: HEWPACK

