

UNISYS

System 80
Model 50
Configurator

November 1991

Printed in U S America
7004 1959-100



.

.



UNISYS

System 80
Model 50
Configurator

Copyright © 1991 Unisys Corporation
All rights reserved.
Unisys is a registered trademark of Unisys Corporation.

OS/3 Release 14

November 1991

Printed in U S America
7004 1959-100

This document is not a contract and does not create any representations or warranties by Unisys. All applicable representations, warranties and covenants are contained only in the applicable agreement signed by the parties.

The information contained herein is subject to change without notice. Revisions may be issued from time to time to advise of changes or additions.

Correspondence regarding this publication should be addressed directly to Unisys Corporation, SPG East Coast Systems Documentation Development, Tredyffrin Plant, 2476 Swedesford Road, P.O. Box 203, Paoli, PA, 19301-0203, U.S.A.

Unisys is a registered trademark of Unisys Corporation.
PW² is a trademark of Unisys Corporation.
ESCORT is a trademark of Unisys Corporation.
MAPPER is a registered trademark of Unisys Corporation.
MAPPER is also a service mark of Unisys Corporation.
TIP/30 is a registered trademark of Allinson-Ross Corporation.
TPS is a trademark of Unisys Corporation.
UNISERVO is a registered trademark of Unisys Corporation.
UNISCOPE is a registered trademark of Unisys Corporation.
UNIX is a registered trademark Unix System Laboratories, Inc.

Contents

Introduction

Model 50 System Overview

Nomenclature	2
Hardware Styles	2
Software Styles	2
Hardware Overview	3
Carry-Forward Equipment	4
Communications Devices	4
Peripheral Devices	4
New Peripherals	4

Configuring a Model 50 System

Step 1: Specify Required Minimum Configuration	5
The Basic Package	6
Step 2: Determine I/O Channel Requirements	8
I/O Components Characteristics	8
Channel Configurations	9
Maximum Channel Combinations	9
Block Terminators	10
Step 3: Determine Main Memory Requirements	10
Step 4: Order New Peripherals	11
Step 5: Order Optional Hardware and Software	11
Step 6: Document Ordering Information	11

Ordering a Model 50 System

Configuration Checklist	12
Sample Orders	13
Domestic Order	14
International Order	15

Appendix A System 80 Model 50 Hardware Styles

Hardware Package Style	16
Required Domestic Hardware Component Styles	17
Required International Hardware Component Styles	18
Optional Hardware Component Styles	19

Appendix B
System 80 Model 50
OS/3 Software Styles

Basic System Software Package Style	21
Software Component Styles	22

Appendix C
International
Modem Guidelines

Appendix D
Peripheral Power
Sequencing

Appendix E
Remote Maintenance
Configuration

Figures

1. Sample Model 50 System Diagram	3
2. I/O Characteristics	8
3. Allowable Channel Configurations	9
4. Maximum Channel Combinations	9



Introduction

This document provides the guidelines, procedures, and examples necessary to correctly configure a System 80 Model 50 system.

Use this introduction and the next section, *Model 50 System Overview*, to familiarize yourself with the Model 50 system and the ordering process. Then use the remainder of this document to develop a specific configuration and to obtain the necessary ordering information. The ordering section provides a checklist that helps ensure a complete order.

The Model 50 configuration process is straightforward and relatively uncomplicated. There are, for example, no expansion cabinets or communications ports to configure.

The basic configuration and ordering process consists of these six steps:

- Specifying the required hardware and software with the necessary characteristic style choices
- Determining the I/O channel requirements
- Determining the main memory requirements
- Specifying new peripheral devices
- Specifying desired hardware and software options
- Documenting the ordering information

Model 50 System Overview

This section describes the nomenclature used in the ordering process and presents an overview of the components that comprise a Model 50 system.

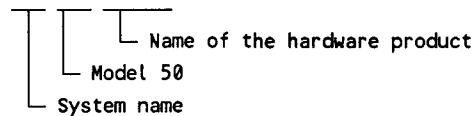
Nomenclature

The Model 50 uses simplified nomenclature for the new hardware and software products. The style descriptors are easy to remember since they are usually the English abbreviations of the product names. Previous type and feature numbers used for System 80 hardware or software are generally not applicable to the Model 50. For example, a customer wanting COBOL 74 on Model 20 would order 6222-96. The Model 50 customer would order S8050-C74. The software is packaged differently for the Model 50 system, so the right designation must be used.

Each item is assigned a style. Most System 80 Model 50 styles have the following general formats. There are, however, some slight variations in these general formats:

Hardware Styles

S80500-XXX

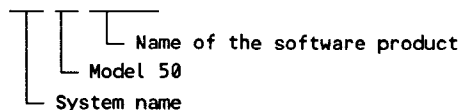


for example:

S80-50	The Model 50 processor package
S80500-MSU	8-MB memory expansion
S80500-SEL	Additional selector channel
S80500-UAT	Unattended power control

Software Styles

S8050-XXX



for example:

S8050-SPS	The OS/3 system platform software containing the basic system control software
S8050-F77	FORTTRAN 77 compiler

Hardware Overview

Figure 1 shows a sample system diagram for the Model 50. The area above the shaded line represents the processor cabinet.

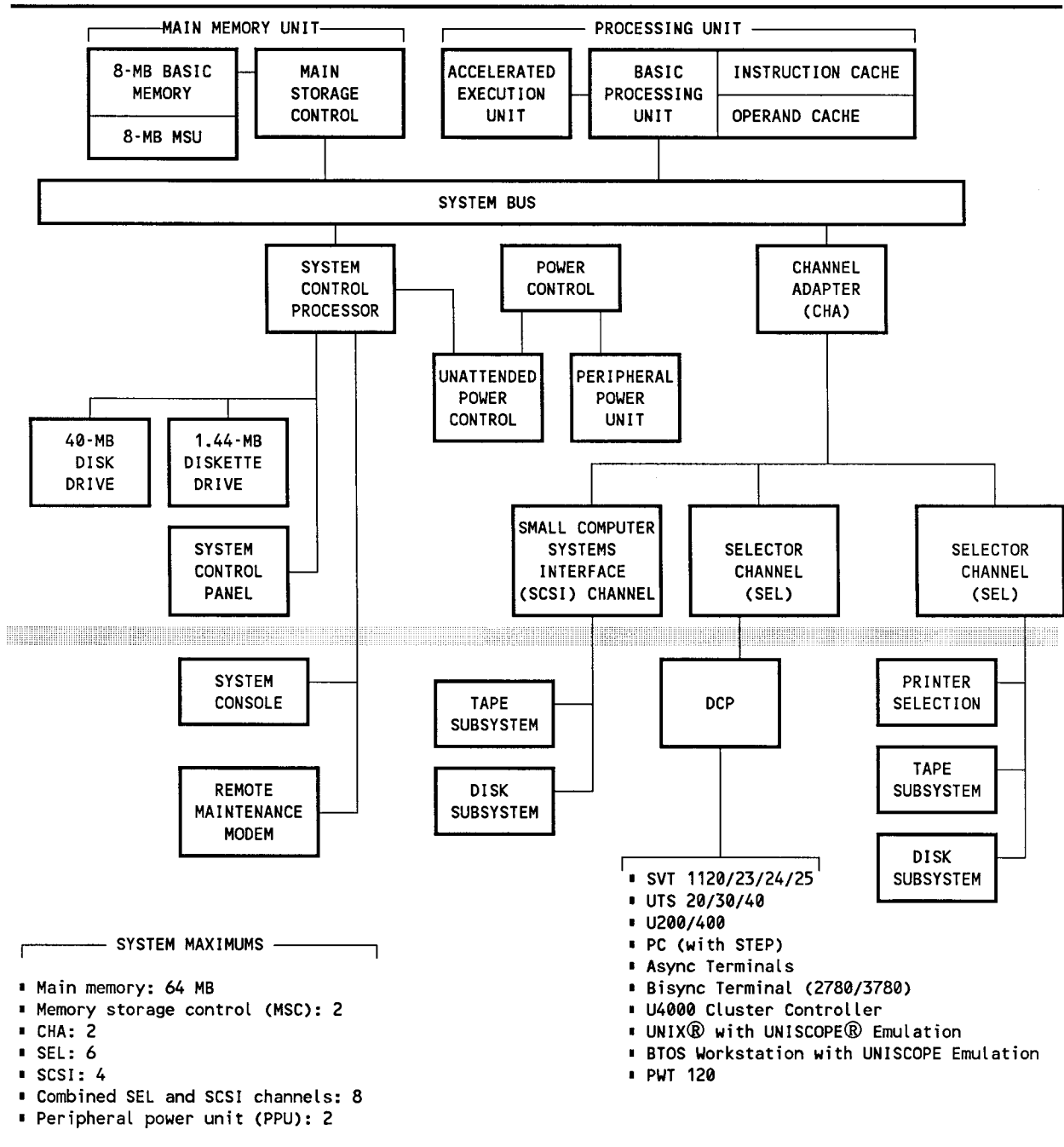


Figure 1. Sample Model 50 System Diagram

Carry-Forward Equipment

The following equipment can be carried forward from earlier System 80 systems. On the Model 50 system, communications devices will be connected to a DCP while DCPs and other peripheral devices will be connected on a selector channel.

Communications Devices

- PWT 120
- SVT 1120/23/24/25
- UTS 20/30/40
- U200/400
- PC (with STEP)
- Async terminals
- Bisync terminals (2780/3780)
- U400 cluster controller
- BTOS workstation with UNISCOPE emulation
- UNIX with UNISCOPE emulation

Peripheral Devices

- DCP/15, DCP/30, DCP/40, and DCP/50
- 0776 (selector channel models only), 0770, 0770 II, 9246-14B, and 9246-25B printers
- 8494 and M9720 disk subsystems
- BT3200 and UNISERVO[®] 22/24/26/28 tape subsystems

New Peripherals

The following peripherals, not previously offered on System 80 systems, can also be configured on the indicated channel of a Model 50 system:

- DCP/25 (selector channel)
- DCP/35 (selector channel)
- DCP/55 (selector channel)
- DCP/5 (can only be connected to the system through another DCP)
- USR9600-15 disk subsystem (SCSI channel)
- USR5073 cartridge tape drive (SCSI channel)
- 2145-03 tape drive (SCSI channel)

Configuring a Model 50 System

This section presents the various rules, guidelines, and limitations associated with each step of the configuration process.

Step 1: Specify Required Minimum Configuration

The following components must be included in any domestic or international System 80 Model 50 order.

For all orders:

- **S80-50** The basic Model 50 hardware system
- **S8050-SPS** The OS/3 system platform software

for *domestic* orders:

- **PWA516-OK** Console operation kit
- **C8484-00** Power cord set for processor cabinet
- **S80500-MOD** Remote maintenance modem

for *international* orders:

- **PWA516-OKx** Console operation kit
- **C8484-xx** Power cord set for processor cabinet
- **C3381-xx** Power cord set for the console

In addition, the following peripheral and communication device complement is required for a minimum system configuration and must be ordered or carried forward from the customer's existing system:

- Disk subsystem: 1
- System printer: 1
- Tape device: 1
- Distributed communications processor: 1

Notes:

- *S80500-MOD is required for domestic orders to support remote maintenance activity. Whenever remote maintenance is offered internationally, S80500-MOD or an equivalent modem must be ordered or supplied by the customer. If international users select an alternate modem, it should be compatible with the modem specified by the S80500-MOD style number. (See Appendix C.)*
- *The required DCP must be connected to the Model 50 through a selector channel. This channel must be dedicated to the DCP.*

When ordering some hardware and software styles, you must specify certain characteristics, such as electrical requirements or media formats. The required characteristic style choices are included on the ordering check list. A complete listing of the characteristic styles is given in the appendixes.

The Basic Package

The two required package styles provide the following.

S80-50 provides:

- **Processor cabinet**, containing
 - Power control
 - Basic processing unit with instruction and operand caches
 - Accelerated execution unit
 - Main memory consisting of a main storage control unit and an 8-MB basic memory unit
 - Channel adapter
 - Two selector channels
 - System control processor
 - 1.44-MB integrated diskette drive for loading microcode and program products
 - 40-MB integrated hard disk drive for storage of microcode and diagnostics
 - Remote maintenance interface
 - System control panel
- **An 8-MB memory expansion** (bringing the S80-50 package to 16 MB of memory)

- **System console subsystem, including**
 - PW² system unit
 - Video graphics array (VGA) display controller
 - RS232 switch and two cables
- **VGA color video display**
- **Keyboard and keyboard cable**
- **RS232 communications cables** to connect the processor to both the system console and to the remote maintenance configuration
- **Block terminator sets** for the two supplied selector channels

S8050-SPS provides:

- **OS/3 EXEC**
- **System control firmware**
- **System console software**
- **Console services software**
- **Online system confidence tests**
- **Offline system confidence tests**
- **System maintenance package**

**Step 2:
Determine
I/O Channel
Requirements**

The I/O system of the Model 50 uses selector channels and optional SCSI channels. Both channel types connect to the system bus via a channel adapter (CHA).

The standard Model 50 processor cabinet contains one CHA and two selector channels. One selector channel is dedicated to the required channel-connected DCP. The second selector channel supports up to eight peripheral control units.

This minimum can be expanded if the configuration requires support for additional selector channel peripherals or connection to SCSI peripheral devices.

The I/O system is expanded by adding channels and, if required, an additional CHA.

The card slots of the Model 50 allow only certain combinations of channels. It is necessary to use these guidelines as well as specified I/O requirements to determine the final I/O configuration.

The following figures provide the general characteristics of the I/O components and guidelines for determining system maximums.

I/O Components Characteristics

Figure 2 shows the characteristics of the I/O components.

I/O Component	Characteristics
Channel adapter (CHA)	<ul style="list-style-type: none">- One supplied with S80-50.- One additional CHA can be configured (S80500-CHA).- Each CHA supports four channels.
Selector channels (SEL)	<ul style="list-style-type: none">- Two supplied with S80-50.- One selector must be dedicated to the required DCP.- Up to four additional SELs (S80500-SEL) can be configured in a maximum configuration.- Selectors support connection of many existing System 80 peripherals.- Each selector supports up to eight control units.
SCSI channels	<ul style="list-style-type: none">- SCSI channels (S80500-SCI) are optional, they are not supplied with S80-50.- Up to four S80500-SCI can be configured in a maximum configuration.- Each SCSI channel supports connection of new peripherals, such as 2145 tape.- Each S80500-SCI supports up to seven peripheral devices.

Figure 2. I/O Characteristics

Channel Configurations

Figure 3 shows the allowable channel configurations within the Model 50 cabinet. The possible channel combinations are based on this card slot structure.

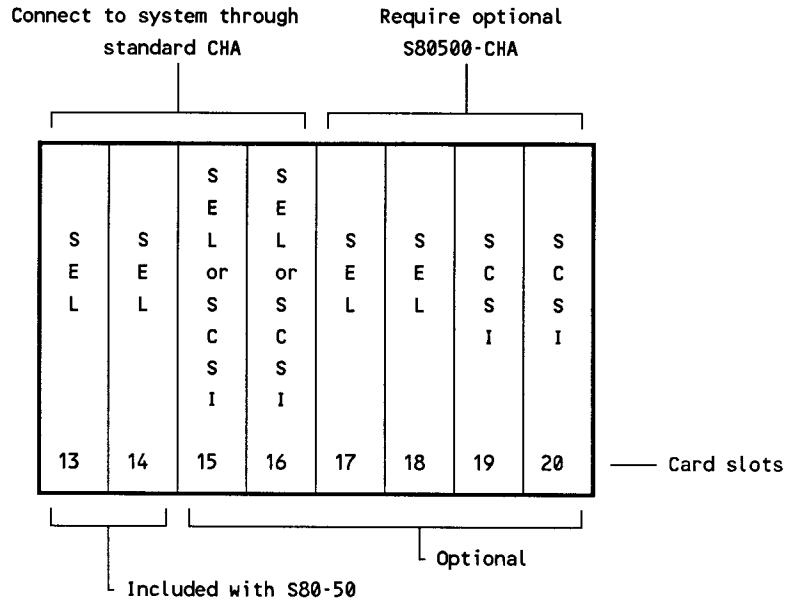


Figure 3. Allowable Channel Configurations

Maximum Channel Combinations

Figure 4 shows the maximum channel combinations that can be configured with a Model 50. Note that with one CHA, up to two optional channels can be selected. With a second CHA configured, up to six optional channels can be selected.

1 CHA	SELECTORS INCLUDED	OPTIONAL	OPTIONAL	TOTAL ALLOWABLE
	IN S80-50	S80500-SEL	S80500-SCI	CHANNELS
	2	2	0	4
	2	1	1	4
	2	0	2	4
2 CHAs	SELECTORS INCLUDED	OPTIONAL	OPTIONAL	TOTAL ALLOWABLE
	IN S80-50	S80500-SEL	S80500-SCI	CHANNELS
	2	4	2	8
	2	3	3	8
	2	2	4	8

Figure 4. Maximum Channel Combinations

Block Terminators

Each selector channel in a Model 50 configuration requires a block terminator set (F5268-01). Where peripherals are being carried forward, the necessary terminators may already be present at the site. If not, the required terminators must be ordered. Two block terminator sets are provided with the basic system.

Step 3: Determine Main Memory Requirements

The basic Model 50 (S80-50) provides 16 MB of main memory in the following setup:

- A main storage control unit and 8 MB of memory
- An 8-MB memory expansion unit (S80500-MSU) supplied with the package

Memory can be expanded by configuring both additional memory expansion units and a second main storage control unit. A system maximum of 64 MB can be configured.

Guidelines for adding memory are:

- The 16 MB of memory included in the S80-50 package can be expanded by adding 8-MB memory expansion units up to 32 MB (two additional S80500-MSU units). This 32 MB is the maximum memory that can be configured without the addition of a second main storage control unit.
- A second main storage control unit (S80500-MSC) can be added anytime, providing memory interleaving and the ability to expand to the system memory maximum. It should be noted that S80500-MSC does not include memory expansion units. Memory expansion units must be ordered separately.
- When S80500-MSC is ordered with a new system, memory must be ordered in multiples of 16 MB and must be evenly distributed between the two main storage control units.

When S80500-MSC is added to an existing system, it may be necessary to order an additional memory expansion unit to make the total memory a 16-MB multiple. Again, the total memory must be evenly distributed between the two main storage control units.

- When the optional S80500-MSC is configured, up to six S80500-MSU units can be added to the basic system, reaching the system maximum of 64 MB.

Step 4: Order New Peripherals

Peripheral devices are ordered according to the customer's needs, keeping in mind the minimum complement necessary for a basic Model 50 system:

- 1 disk subsystem
- 1 system printer
- 1 open reel tape drive
- 1 distributed communications processor

A number of peripheral devices used on existing System 80 models are supported and can be carried forward. These devices were listed earlier in the *Model 50 System Overview* section.

Refer to the price book for applicable style numbers of the supported peripherals.

Notes:

- *Two peripheral cables (F5269-xx) are required for each peripheral subsystem in a selector channel configuration. These cables connect the peripheral to the selector channel or to another peripheral in a daisy-chained connection.*
- *For proper connection to the selector channel, the DCP requires both the peripheral cables (F5269-xx) and a host block multiplexer line module.*

Step 5: Order Optional Hardware and Software

System 80 Model 50 offers two additional hardware options:

- Peripheral power unit – This option applies power to selected peripherals as power is applied to the processor cabinet. (These peripherals must support FIPS 61 remote power capabilities. See Appendix D for a list of applicable devices.)
- Unattended power control – This option allows automatic application of processor power without operator intervention. In concert with the peripheral power unit and system control software, this feature permits a customer to program a system to power on and initiate specific tasks at specified times.

Model 50 offers offers a large number of optional software program products. See Appendix B for a complete listing.

Step 6: Document Ordering Information

Once a specific configuration is established with the guidelines presented in this manual, the ordering information, such as style numbers and required characteristic style choices, should be documented for later entry into the ordering system.

The following section provides a checklist to help ensure a complete order, as well as samples of both a domestic and an international order.

Ordering a Model 50 System

Configuration Checklist

Use the following list to check off items included in a specific order. Lines are included to enter specific selections when necessary. The information from the completed checklist can be used later when entering the order.

Required - Domestic Orders

- S80-50**
 - _____ Voltage selection for system console subsystem (120 volts or 220 volts)
 - _____ Keyboard language selection (See Appendix A.)
- PWA516-OK**
- C8484-00**
- S80500-MOD**
- S8050-SPS**
 - _____ Media choice for OS/3 EXEC: M5 or M6 (See Appendix B.)

Required - International Orders

- S80-50**
 - _____ Voltage selection for system console subsystem (120 volts or 240 volts)
 - _____ Keyboard language selection (See Appendix A.)
- PWA516-OKx**
 - _____ Specify one: 1, F, I, D, E, K, L, N, or S (See Appendix A.)
- C8484-xx**
 - _____ Specify one: -00, -01, or -02 (See Appendix A.)
- C3381-xx**
 - _____ Specify one: -00, -01, -02, -03, or -04 (See Appendix A.)
- S8050-SPS**
 - _____ Media choice for OS/3 EXEC: M5 or M6 (See Appendix B.)

Optional Hardware - All Orders

- S80500-CHA**
- S80500-SEL** (number desired _____)
- F5268-01** Block terminator sets (number desired _____)
- S80500-SCI** (number desired _____)
- S80500-MSC**
- S80500-MSU** (number desired _____)
- S80500-PPU** (number desired _____)
- S80500-UAT**
- Peripheral devices

_____	_____	_____
_____	_____	_____
_____	_____	_____

Optional Software - All Orders

- Program products

_____	_____	_____
_____	_____	_____
_____	_____	_____

Sample Orders

The following are examples of both a domestic and an international order. The examples show the styles that would be ordered as well as the necessary characteristic style choices. Indented under some style numbers are the component style numbers included in that style. These component style numbers are not specified in the order, but are included because they have associated characteristic style choices that must be selected when the order is entered.

All the characteristic style choices are defined in Appendixes A and B.

Domestic Order

This sample order represents a customer who is carrying forward existing peripherals. The customer requires four selector channels, one SCSI channel, 64MB of main storage, peripheral power turn-on capability for 16 devices and unattended power control capability. In addition to the required OS/3 system platform software package style (S8050-SPS), this customer is also ordering seven optional program products. OS/3 EXEC will be loaded onto an 8494 disk volume; therefore, characteristic style C12=M5 is selected for component style S8050-EXE.

Style Number	Description	Qty	Characteristics
S80-50	Sys 80 Model 50	1	
S80500-SCN	System console		C1=120V
PCK101-KBD	Console keyboard		C3=V1
PWA516-OK	Console Op Kit	1	
C8484-00	Processor power cord	1	
S80500-MOD	Maint modem	1	
S80500-CHA	2nd channel adapter	1	
S80500-SEL	Selector channel	2	
F5268-01	Block terminators	2	
S80500-SCI	SCSI channel	1	
S80500-MSC	2nd storage control	1	
S80500-MSU	8-MB memory	6	
S80500-PPU	Peripheral power	2	
S80500-UAT	Unattended power	1	
S8050-SPS	OS/3 System plat s/w	1	
S8050-EXE	OS/3 EXEC		C11=01,C12=M5,C3=V1
S8050-SCF	Sys cntrl firmware		C11=02,C12=M67
S8050-SCW	Sys console s/w		C11=02,C12=M9
S8050-CSS	Console serv s/w		C11=02,C12=M67
S8050-ONL	Online conf test		C11=02,C12=M67
S8050-OFL	Offline conf test		C11=02,C12=M67
S8050-SMP	Sys maint pkg		C11=03,C12=M42,C3=V1
S8050-ASM	OS/3 Assembler	1	C11=01,C12=M67,C3=V1
S8050-C85	OS/3 COBOL 85	1	C11=02,C12=M67,C3=V1
S8050-EDT	OS/3 Editor	1	C11=01,C12=M67,C3=V1
S8050-MGN	OS/3 Menu Gen	1	C11=01,C12=M67,C3=V1
S8050-OLX	OS/3 On-Line Trans	1	C11=01,C12=M67
S8050-TPS	Transaction Plat S/W	1	C11=02,C12=M42,C3=V1
S80-VAN	System 80 Utilities	1	C11=02,C12=M42,C3=V1

Note: *Transaction Platform Software (TPS™) is a fully functional subset of the very successful TIP/30® transaction processing software from Allinson-Ross Corporation.*

International Order

This sample represents an order for a customer in Norway. This customer is carrying forward existing peripherals and requires three selector channels, one SCSI channel, and 32MB of non-interleaving main storage. In addition to the required OS/3 system platform software package style (S8050-SPS), this customer is also ordering six optional program products. OS/3 EXEC will be loaded onto an M9720 disk volume; therefore, characteristic style C12=M6 is selected for component style S8050-EXE.

<u>Style Number</u>	<u>Description</u>	<u>Qty</u>	<u>Characteristics</u>
S80-50	Sys 80 Model 50	1	
S80500-SCN	System console		C1=220V
PCK101-KBD	Console keyboard		C3=V62
PWA516-OKN	Console Op Kit	1	
C8484-02	Processor power cord	1	
C3381-02	Console power cord	1	
S80500-SEL	Selector channel	1	
F5268-01	Block terminator	1	
S80500-SCI	SCSI channel	1	
S80500-MSU	8-MB memory	2	
S8050-SPS	OS/3 System plat s/w	1	
S8050-EXE	OS/3 EXEC		C11=01,C12=M6,C3=V1
S8050-SCF	Sys cntrl firmware		C11=02,C12=M67
S8050-SCW	Sys console s/w		C11=02,C12=M10
S8050-CSS	Console serv s/w		C11=02,C12=M67
S8050-ONL	Online conf test		C11=02,C12=M67
S8050-OFL	Offline conf test		C11=02,C12=M67
S8050-SMP	Sys maint pkg		C11=03,C12=M42,C3=V1
S8050-ASM	OS/3 Assembler	1	C11=01,C12=M67,C3=V1
S8050-EDT	OS/3 Editor	1	C11=01,C12=M67,C3=V1
S8050-RPG	OS/3 RPG II	1	C11=02,C12=M67,C3=V1
S8050-OLD	OS/3 On-Line Disk	1	C11=01,C12=M67
S8050-TPS	Transaction Plat S/W	1	C11=02,C12=M42,C3=V1
S80-VAN	System 80 Utilities	1	C11=02,C12=M42,C3=V1

Appendix A

System 80 Model 50 Hardware Styles

Hardware Package Style

Package Style	Description
S80-50	System 80 Model 50

This package style consists of the following component styles:

Component Styles	Description	Qty	Chrst Code	Narrative
S80500-PRC	Processor	1		
S80500-MSU	8-MB memory expansion	1		
F8251-07	RS232 communications cable - 50 ft	2		1
S80500-SCN	System console	1	C1	2,4
VGA200-COL	VGA video display - color	1		
PCK101-KBD	Console keyboard	1	C3	3
PCK1-AT	AT compatible keyboard cable	1		
F5268-01	Block terminator set	2		

Narrative:

- One cable connects S80500-PRC to system console. The other cable connects S80500-PRC to the RS232 switch of the system console subsystem as part of the remote maintenance configuration.
- C1 Characteristic Style Choices - Voltage:
 - 120V 100 volts to 127 volts, single phase
 - 220V 200 volts to 240 volts, single phase

3. C3 Characteristic Style Choices - Language versions for console keyboard:

- V1 English (U.S.)
- V2 English (U.K.)
- V3 French
- V4 Italian
- V5 German
- V7 Spanish
- V8-D Danish
- V18-F Finnish
- V62 Norwegian
- V63 Swedish

4. S80500-SCN includes the following components:

- Either one of the following system units:
 - 20-MB basic system unit (style PWA51602-20) with PW² video controller (style VGA16256-VCW); or
 - 52-MB system unit (style PCI32631-52)
- An RS232 switch that is used to toggle the modem between the processor's remote maintenance interface and the system console (for programming the modem)
- Two RS232 cables. One cable (6 ft) is used to connect the system console to the RS232 switch. A second cable (3 ft) is used to connect the RS232 switch to the remote maintenance modem.

**Required Domestic
Hardware Component
Styles**

Component Styles	Description	Narrative
PWA516-OK	Domestic console operation kit	1
C8484-00	Flexible power cord set - American	2
S80500-MOD	Remote maintenance modem	

Narrative:

1. Kit includes power cord for console.
2. Provides a 15-ft processor power cord for use in USA and Canada. Includes coupler for Unisys equipment end and a 30-amp NEMA L6-30P power plug.

Required International Hardware Component Styles

Component Styles	Description	Narrative
PWA516-OKx	International console operation kit	1
C8484-00	Flexible power cord set - American	2,3
C8484-01	Flexible power cord set - IEC 309 plug	2,4
C8484-02	Flexible power cord set - no plug assembly	2,5
C3381-00	Power cord set - NEMA 5-15P	6,7
C3381-01	Power cord set - SEV 1011	6,7
C3381-02	Power cord set - IEC 83/C5	6,7
C3381-03	Power cord set - BS 1363:1967	6,7
C3381-04	Power cord set - no plug assembly	6,7

Narrative:

1. Select a console operation kit to match the language chosen for keyboard
PCK101-KBD:
 - PWA516-OK1 : United Kingdom
 - PWA516-OKF : France
 - PWA516-OKI : Italy
 - PWA516-OKD : Germany
 - PWA516-OKE : Spain
 - PWA516-OKK : Denmark
 - PWA516-OKL : Finland
 - PWA516-OKN : Norway
 - PWA516-OKS : Sweden
2. One processor power cord selection required for each order.
3. Provides a 15-ft processor power cord for use in Canada (and USA). Includes coupler for Unisys equipment end and a 30-amp NEMA L6-30P power plug.
4. Provides a 15-ft processor power cord for international use. Includes coupler for Unisys equipment end and a 30-amp IEC 309-32A power plug.
5. Provides a 15-ft processor power cord for international use. Includes coupler for Unisys equipment end and no power plug.

6. One console power cord selection is required for each order. Select a console power cord to match the console operation kit that is chosen:

- PWA516-OK1 : Select from C3381-00, -01, -02, -03, or -04
- PWA516-OKF : Select C3381-02
- PWA516-OKI : Select C3381-04
- PWA516-OKD : Select C3381-02
- PWA516-OKE : Select C3381-02
- PWA516-OKK : Select C3381-04
- PWA516-OKL : Select C3381-02
- PWA516-OKN : Select C3381-02
- PWA516-OKS : Select C3381-02

7. Each of these power cords provides an IEC 320-volt appliance coupler for the Unisys equipment end. The power plug provided is specified in the description. These plugs are for use in the following countries:

C3381-00 : Canada, Korea, Japan

C3381-01 : Switzerland

C3381-02 : Algeria, Austria, Belgium, Finland, France, Germany, Hungary, Iceland, Indonesia, Iran, Malaysia, Netherlands, Norway, Poland, Portugal, Romania, Spain, Sweden, Yugoslavia

C3381-03 : United Kingdom, Northern Ireland, parts of Republic of Ireland, some middle eastern countries

C3381-04 : International

Optional Hardware Component Styles

Component Styles	Description	Max Qty	Narrative
S80500-MOD	Remote maintenance modem	1	1
S80500-MSC	2nd main storage control	1	
S80500-MSU	8-MB main memory expansion	6	2
S80500-CHA	2nd channel adapter	1	
S80500-SEL	Selector channel	4	3
S80500-SCI	SCSI channel	4	3
S80500-PPU	Peripheral power unit	2	4
S80500-UAT	Unattended power control	1	
F5268-01	Block terminator set	4	5

Narrative:

1. Optional for international orders, including Canada. (Required for domestic orders.)
2. The maximum number of units that can be selected is based on whether the system contains S80500-MSU:
 - If a system does not contain S80500-MSU, up to two S80500-MSU units can be selected.
 - If a system contains S80500-MSU, up to six S80500-MSU units can be selected.
3. The total number of selector and SCSI channels that can be selected is based on whether the system contains the second channel adapter (S80500-CHA):
 - If a system does not contain S80500-CHA, up to two additional channels can be selected (reaching a maximum of four channels).
 - If a system contains S80500-CHA, up to six additional channels can be selected (reaching the system maximum of eight channels).
4. Provides power sequencing for peripherals with FIPS 61 interfaces. Each S80500-PPU supports up to eight ports.
5. One block terminator set is required for each optional selector channel (S80500-SEL) ordered. Each set includes two block terminators. Necessary block terminators can either be carried forward or ordered by the customer.

Appendix B

System 80 Model 50 OS/3 Software Styles

Basic System Software Package Style

Package Style	Description
S8050-SPS	OS/3 Sys Platform S/W

This package style consists of the following component styles:

Component Styles	Description	Chrst Codes	Narrative
S8050-EXE	OS/3 EXEC	C11,C12,C3	1,4,7
S8050-SCF	System Control Firmware	C11,C12	2,3
S8050-SCW	System Console Software	C11,C12	2,5
S8050-CSS	Console Services Software	C11,C12	2,3
S8050-ONL	Online Sys Conf Tests	C11,C12	2,3
S8050-OFL	Offline Sys Conf Tests	C11,C12	2,3
S8050-SMP	System Maintenance Pkg	C11,C12,C3	1,6,7

Narrative:

1. C11 Characteristic Style - Release software revision level:

- 02 Release 14.0.0B

2. C11 Characteristic Style - Software revision level:

- 02 Revision 02

3. C12 Characteristic Style - Media for software:

- M67 Micro Disk 3.5 inch HD 1.44 MB

4. C12 Characteristic Style Choice - Media for software:

- M5 Mag Tape 9 Ch 1600 BPI PE - Format specific for loading onto 8494 in file mode
- M6 Mag Tape 9 Ch 1600 BPI PE - Format specific for loading onto M9720 in file mode

5. C12 Characteristic Style Choice - Media for software:

- M9 Mixed Media: A. Micro Disk 3.5 inch HD 1.44 MB
B. VHS Video Cassette, NTSC Format (Canada, Mexico, Puerto Rico, USA)
- M10 Mixed Media: A. Micro Disk 3.5 inch HD 1.44 MB
B. VHS Video Cassette, PAL Format (Austria, France, Germany, Italy, Netherlands, Portugal, Spain, Switzerland, United Kingdom)

6. C12 Characteristic Style Choice - Media for software:

- M42 Magnetic Tape 9 Ch 1600 BPI PE

7. C3 Characteristic Style - Language version:

- V1 English (U.S.) - Unisys Corp STD 2017547/S305E003

Software Component Styles

Component Styles	Description	Chrst Codes	Narrative
S8050-ASM	OS/3 Assembler	C11,C12,C3	1,3,5
S8050-BAS	OS/3 BASIC Compiler	C11,C12,C3	1,3,5
S8050-C	OS/3 C Compiler	C11,C12,C3	1,3,5
S8050-CED	OS/3 COBOL 74 Editor	C11,C12,C3	1,3,5,8
S8050-CTR	OS/3 COBOL 68-74 Trans	C11,C12,C3	1,3,5
S8050-C74	OS/3 COBOL 74 Compiler	C11,C12,C3	1,3,5
S8050-C85	OS/3 COBOL 85 Compiler	C11,C12,C3	10,3,5
S8050-DFA	OS/3 DDP File Access	C11,C12,C3	1,3,5
S8050-DIX	OS/3 DDP IMS Xprocessor	C11,C12,C3	1,3,5
S8050-DMS	OS/3 Data Mgt System	C11,C12,C3	1,3,5,6
S8050-DTR	OS/3 DDP Xfer Facility	C11,C12,C3	1,3,5
S8050-EDT	OS/3 Editor	C11,C12,C3	1,3,5
S8050-ESC	OS/3 ESCORT™ Compiler	C11,C12,C3	1,3,5
S8050-FIV	OS/3 FORTRAN 66 Compiler	C11,C12,C3	1,3,5
S8050-FPL	OS/3 FIPLAN	C11,C12,C3	1,3,5
S8050-F77	OS/3 FORTRAN 77 Compiler	C11,C12,C3	1,3,5
S8050-IMS	OS/3 IMS Mult Thread	C11,C12,C3	1,3,5
S8050-MGN	OS/3 Menu Generation	C11,C12,C3	1,3,5
S8050-M80	MAPPER® 80	C11,C12,C3	1,3,5,7
S8050-OLD	OS/3 On-Line Disk	C11,C12	1,3
S8050-OLX	OS/3 On-Line Transfer	C11,C12	1,3
S8050-PAS	OS/3 PASCAL Compiler	C11,C12,C3	1,3,5
S8050-PCT	OS/3 PCTRAN	C11,C12	1,3
S8050-RPG	OS/3 RPG II	C11,C12,C3	10,3,5,8
S8050-RSM	OS/3 Resource Management	C11,C12	1,3
S8050-TPS	Transaction Platform Sys	C11,C12,C3	9,4,5
S80-VAN	System 80 Utilities	C11,C12,C3	2,4,5

Narrative:

1. C11 Characteristic Style - Release software revision level:
 - 01 Release 14.0.00
2. C11 Characteristic Style - Software revision level:
 - 01 Revision 1.7
3. C12 Characteristic Style - Media for software:
 - M67 Micro Disk 3.5 inch HD 1.44 MB
4. C12 Characteristic Style - Media for software:
 - M42 Mag Tape 9 Ch 1600 BPI PE
5. C3 Characteristic Style - Language version:
 - V1 English (U.S.) - Unisys Corp STD 2017547/S305E003
6. Dependency: Requires COBOL 1974 (S8050-C74) or COBOL 1985 (S8050-C85)
7. Dependency: Requires OS/3 Data Mgt. System (S8050-DMS)
8. Dependency: Requires OS/3 Editor (S8050-EDT)
9. C11 Characteristic Style - Software revision level:
 - 02 Revision R14 (5R0-0068)
10. C11 Characteristic Style - Software revision level:
 - 02 Revision 14.0.01

Appendix C

International Modem Guidelines

International customers requiring a modem can order S80500-MOD. If an alternate modem is selected, it must conform to the general characteristics listed in this appendix. For additional information and guidelines, international customers should contact their Unisys subsidiary.

Modems used on the model 50 must support:

- Microcom Network Protocol (MNP) up to, and including, level 5
- Transfer rates up to 2400 baud
- Asynchronous operation
- Hayes or AT command set compatibility

Appendix D

Peripheral Power Sequencing

The following peripherals support the FIPS 61 interface and can be powered on through the use of the optional peripheral power unit (S80500-PPU):

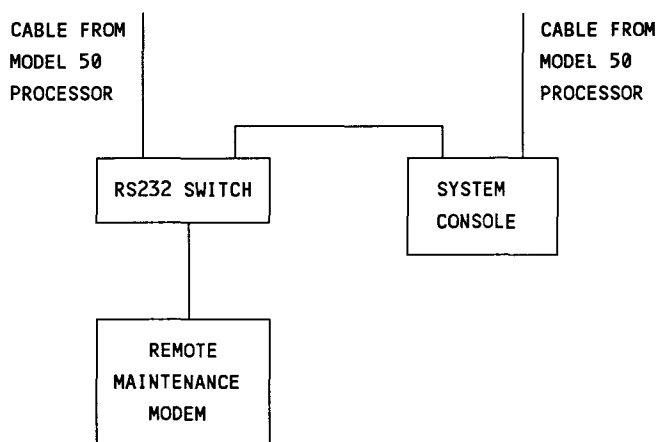
- DCP 25/30/35/50/55
- 0776 printer
- 0770 printer
- 0770 II printer
- 9246-14B printer
- 9246-25B printer
- 8494 disk subsystem
- M9720 disk subsystem
- UNISERVO 20/22/26/28 tape subsystems (5055 control unit)
- BT3200 tape subsystems

Refer to the documentation for each peripheral for remote power control and cabling requirements.

Appendix E

Remote Maintenance Configuration

The following illustration shows the components of the remote maintenance configuration and how these components are connected:



The remote maintenance modem must be programmed at installation. A runstream is included with the system console software to program the modem for normal operation. When programming the modem, or reprogramming the modem if necessary, position the RS232 switch to allow the necessary data and control input to come from the system console.

For normal operating conditions, the switch is then repositioned to allow data to pass between the Model 50 processor and the modem.



z

.





70041959-100